



Department of Health &
Human Services
Children & Family Services

Midyear Budget Hearing
July 7, 2011



Overview of Responsibilities

Children & Family Services

Our mission is to assure that children at risk of abuse or neglect are protected and nurtured within a family, and with the support of the community.

The Department of Children and Family Services embraces the philosophy that children grow better in families. Our programs have the goal of stabilizing and reuniting families that have been weakened through poverty, illness or crisis, resulting in neglect or abuse to children.

Four Imperatives

1. Children who cannot be protected within their own home must be removed.
2. We must reduce the number of children who come into custody unnecessarily.
3. Children must be placed in the most family-like setting which can meet their needs.
4. All children must have a time-limited permanency plan.

These imperatives will inform our decisions, drive our work, and guide our steps.

Overview of Responsibilities

Children & Family Services

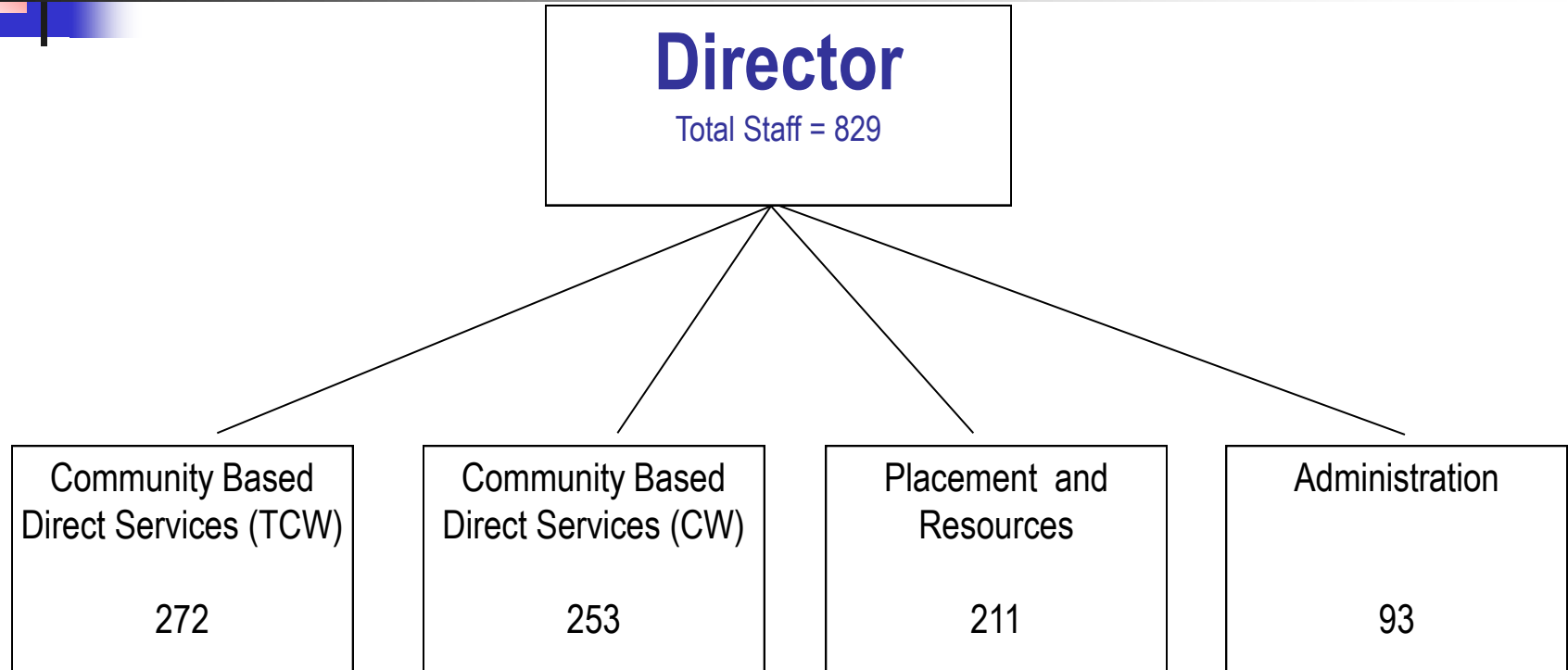
Direct & Community Based services include:

- 24-hour Hotline (696-KIDS) & investigation;
- Collaboration with Juvenile Court, Mental Health, and other agencies to keep families together or reunite them, if possible;
- Protective supervision to children in their own homes;
- Supportive services to children in our custody;
- Specialized Sex Abuse Investigation Unit;
- Specialized chemical dependency unit, Sobriety Treatment and Recovery Team (START), for children and their families;
- Facilitate safe and supervised visitation for families;

Resources and Placement services include:

- Recruitment, training, and home studies for prospective foster and adoptive parents;
- Teach independent living skills to 16-18 year old children in our custody;
- Identify and secure alternative care for children in our custody;
- Facilitate adoption for children in the Agency's permanent custody;

Children & Family Services Table of Organization



* Source: HR/Payroll

State Budget Impacts

Children & Family Services

- Direct Financial Reductions:
 - State and Federal funds - \$4,521,361.00
 - HHS Levy Impact - \$791,547.00 – operations
\$1,488,740.00 – board & care

Critical Issues for *Children & Family Services* *for Next 18 months*



- The Agency will have a new Administrator who will depend on the support of the Executive and Council to promote innovation both internally and with private partners.
- There are continuing staff and management issues including inequity in pay, difficulty attracting high performing social workers to supervisory & management positions and hiring delays (including the freeze).
- Integration of contract and performance management expectations to the daily operations of all levels of the Agency.
- The poor economy and increasing poverty contribute to family and societal stressors that affect children.