

Department of Health & Human  
Services  
*Employment & Family Services*

Midyear Budget Hearing  
June 30, 2011

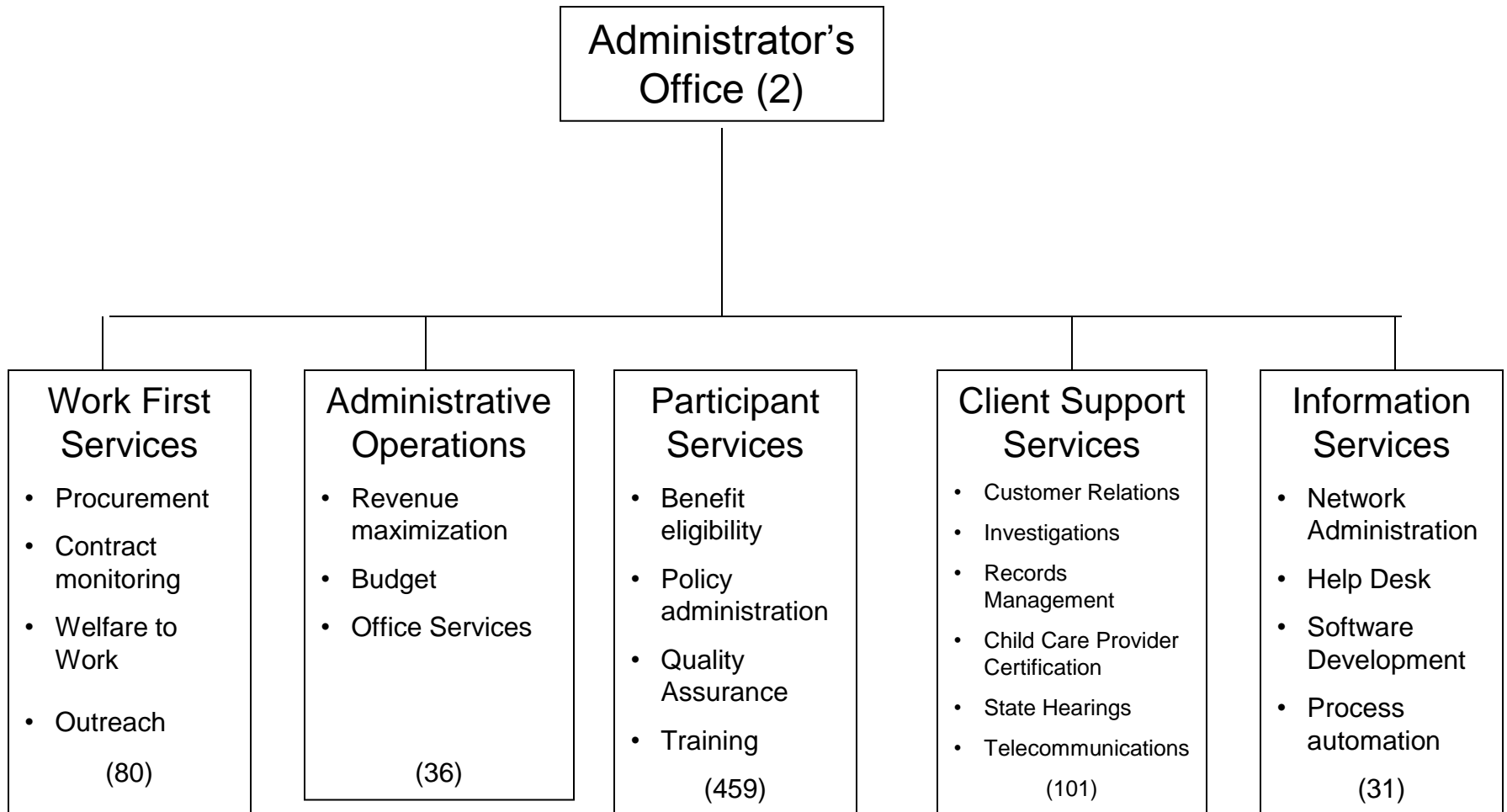
# Overview of Responsibilities

## *Employment & Family Services*

- Provides health care, food assistance, child care subsidy, cash assistance, welfare to work, and emergency help to over 150,000 households each month.
- Dollar value of benefits is approximately \$2.8 billion per year.
- Agency also carries out projects related to Invest In Children, Federal EITC utilization, utility assistance, job fairs, and other initiatives.
- Agency currently has 709 staff and six service locations. Average cost of employee is \$54,000 per year.

# Employment & Family Services

## Table of Organization



# State Budget Impacts

## *Employment & Family Services*

- Direct Financial Reductions for CY'2011:
  - Loss of State and Federal funds: \$2,512,000
  - HHS Levy Impact: \$203,000
- Other Impact to Services
  - Lowering of intake threshold from 150% of Federal Poverty level (\$30k+ family of 3) to 125% may ultimately effect about 4,000 and 2,000 families, making it harder to accept moderate wage jobs.

# Critical Issues for *Employment & Family Services* *for Next 18 months*

- Overall economy and need for jobs.
- Competing Federal and State pressures on the welfare to work program, as Feds seek work participation compliance and State moves TANF resources away from serving cash recipients.
- Continuing high benefit caseloads: over last 10 years, number of households receiving help has almost doubled while staff has declined by over 40%.
- Continuous redevelopment of service model as technology and rules on access ( e.g. phone interviews) change needs for place-based services.
- Potential impact of Federal health care law changes and related possible caseload increase.