

**Department of
Health & Human Services
*Office of Early Childhood/
Invest in Children***

Midyear Budget Hearing

July 7, 2011

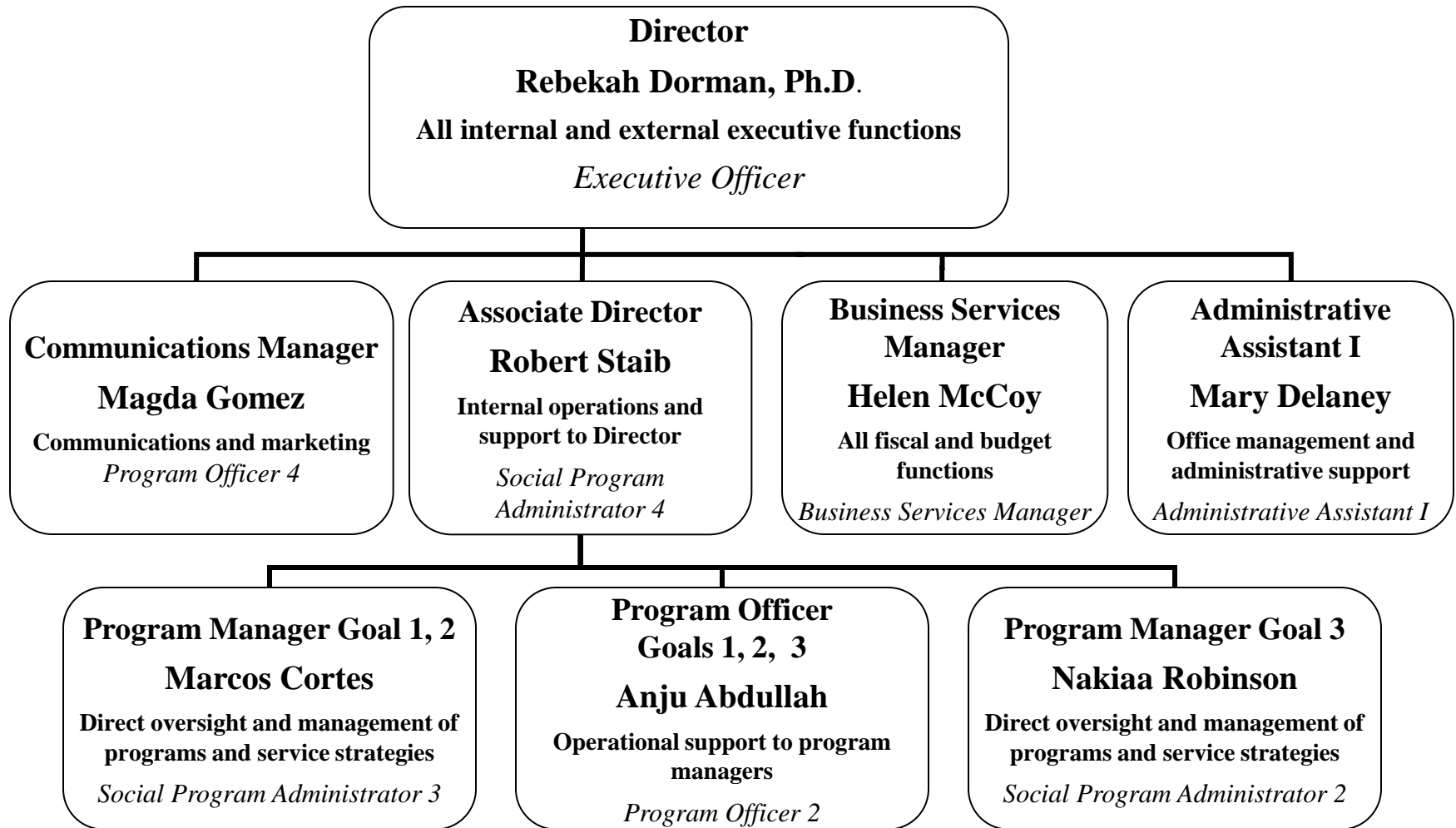


Overview of Responsibilities

Office of Early Childhood/Invest in Children

- Administers the early childhood system in Cuyahoga County with a continuum of services prenatal to kindergarten
- Our Mission:
 - Invest in Children is a community-wide, public/private partnership that mobilizes research and energy to:
 - Ensure the well-being of all young children in Cuyahoga County;
 - Provide support services to parents and other persons who care for these children;
 - Build awareness, momentum, and advocacy in the community around children and family issues.

Invest In Children Organizational Chart



Average Annual Salary: \$ 61,695

State Budget Impacts

Invest in Children

- Potential Share of C.A.T. Reimbursement Loss to HHS Levy (July – Dec. 2011): \$146,696
- State & Federal Reduction in TANF and Child Care Administration Funding: (July – Dec. 2011): \$6,598
- Funding to Help Me Grow for SFY'12 has been reduced by 23% or \$1.4 million from the previous year

Indirect Impact on Child Care System

- Tighter eligibility to receive child care vouchers will increase demand for UPK scholarships
- Reductions in Quality Child Care funding; elimination of early childhood mental health consultation; Healthy Child Care Ohio (health and vision screenings) affect individual child care programs
- Reduction in funding for Regional Resource and Referral Agency (Starting Point)
- Reduction in scholarship funding for child care professional development

Critical Issues for Invest in Children July-December 2011

Manage the transition of Help Me Grow home visiting to a Medicaid model and its impact on families, our early childhood system, and our County Home Visiting Program

Continue to improve child care quality while reduced state funding affects the child care system

Manage the increased need for UPK scholarships

IIC has lost two FTEs (professional positions) in the past two years which continues to place a strain on current staff