

Cuyahoga County Medical Examiner's Office



Dr. Thomas P. Gilson, M.D.



2011 County Council Budget Hearing

Overview

Mission

Current conditions

Future considerations



Cuyahoga County Medical Examiner's Office – Dr. Thomas P. Gilson, M.D.

2011 County Council Budget Hearing

Mission Statement

The Cuyahoga County Medical Examiner's Office is a public service agency responsible for the investigation of violent, suspicious and sudden and unexpected deaths and the provision of laboratory services. The agency is committed to the dignified and compassionate performance of these duties with impartiality and the highest professional levels of quality and timeliness in the service of the general public, medical and legal communities and the overall public health of the citizens of Cuyahoga County.



Cuyahoga County Medical Examiner's Office – Dr. Thomas P. Gilson, M.D.

2011 County Council Budget Hearing

Current Conditions

Operations

Budget

Personnel



Cuyahoga County Medical Examiner's Office – Dr. Thomas P. Gilson, M.D.

2011 County Council Budget Hearing

Operations

Cuyahoga County Charter Provision § 5.03 Medical Examiner: Powers, Duties and Qualifications

All powers now or hereafter vested in or imposed upon county coroners by general law shall be exercised by the Medical Examiner.

Sections 313.11 and 313.12 Revised Code of State of Ohio

"...any person (who) dies as a result of **CRIMINAL** or other **VIOLENT** means, or by **CASUALTY**, or by **SUICIDE**, or **SUDDENLY** when in apparent health, or in any **SUSPICIOUS** or **UNUSUAL** manner..."

THE MEDICAL EXAMINER SHALL KEEP A COMPLETE RECORD AS REQUIRED BY THE REVISED CODE OF THE STATE OF OHIO



Cuyahoga County Medical Examiner's Office – Dr. Thomas P. Gilson, M.D.

2011 County Council Budget Hearing

Operations

Investigations Unit processes decedent at scene as well as receive body at morgue and secure property and evidence.

Forensic technicians assist with receiving decedents at morgue and preparation for viewing or autopsy. Assist pathologists with autopsies. Histologists prepare slides of tissue samples taken at autopsy.

Forensic pathologists conduct viewings and autopsies to determine cause and manner of death, prepare and sign death certificates and autopsy reports.

Digital Media photographs decedent and will take additional scene photography as needed.

Case managers and medical secretaries process casework for each decedent and prepare proper documentation required to produce death certificates.



Cuyahoga County Medical Examiner's Office – Dr. Thomas P. Gilson, M.D.

2011 County Council Budget Hearing

Operations

Medical Examiners Labs and Crime Lab

Toxicology –

Forensic toxicology is the study of the adverse effects of chemicals on living organisms and other disciplines such as analytical chemistry, pharmacology, and clinical chemistry to aid medical or legal investigation of death, poisoning, and drug use. The primary concern for forensic toxicology is not the legal outcome of the toxicological investigation or the technology utilized, but rather the obtaining and interpreting of the results.

Identification/Parentage –

We are an AABB certified laboratory equipped with cutting edge technology in DNA testing. DNA parentage testing is performed by highly experienced DNA scientists. Our team of scientists and specially trained support staff provides you with the most reliable results and personalized customer service. Results from our Laboratory are admissible in a court of law.

DNA –

Our accredited forensic science services are utilized to determine the identity of the source of the DNA profile in a variety of situations including scientific analysis of biological samples recovered from crime scenes, will process sexual assault kits, DNA that is left behind from skin cells when a person touches or comes into contact with an item, and cold cases involving Low Copy Number DNA profiling allows a very small amount of DNA to be analyzed, from as little as 20 to 25 cells.

Trace Evidence –

Assists the Cuyahoga County Medical Examiner and Deputy Medical Examiners in the determination of the cause and manner of death by the recognition, collection, and scientific analysis of evidence from the hands and/or clothing of Victims of violent and/or suspicious death.

Drug Chemistry –

The primary function of the section is the analysis of drugs, including controlled substances, pharmaceuticals and clandestine laboratory samples. Forensic chemists in the section analyze evidence items and conclusively identify a controlled substance or perform sufficient analysis to determine that no controlled substances are present.



Cuyahoga County Medical Examiner's Office – Dr. Thomas P. Gilson, M.D.

2011 County Council Budget Hearing

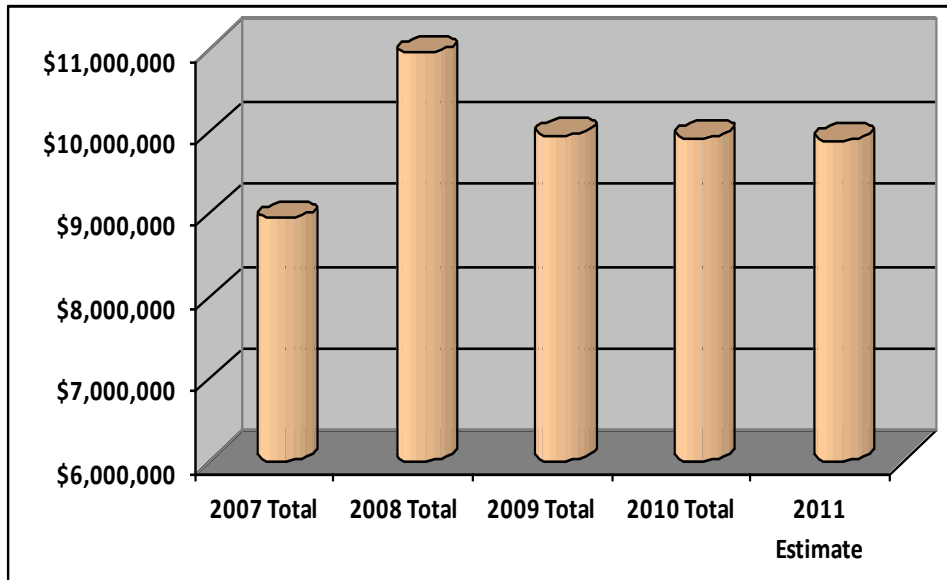
2010 Data	Allegheny, PA	Cuyahoga, OH	Franklin, OH	Hamilton, OH	Oakland, MI	Nassau, NY
Population	1,223,348	1,280,122	1,163,414	802,374	1,202,362	1,339,532
Land Coverage (Sq. Miles)	730.17	458.49	543.0	413.0	872.51	286.69
ME Staff Total (FTE)	93	88 / 78*	30	42	26	61
Total ME Budget (\$ M)	\$8.146 M	\$10.06 M / \$9.89 M*	\$3.809 M	\$3.745 M	\$4.690 M	\$10.359 M
Number of Autopsy's / Total Referrals 2010	878 / 8,647	1,226 / 5,934	1,155 / approx. 10,000	860 / 3,408	858 / 5,203	772 / 5,138
Autopsies per 100,000 pop.	72	96	99	107	71	58
Accreditations	ASCLD	aabb, ASCLD	NAME,	NAME, ASCLD		ASCLD
Laboratories:	Full Crime and toxicology labs	Full crime and toxicology labs	(Coroner – toxicology lab only)	(Coroner – Forensic DNA & toxicology labs)	(No crime lab – Ltd. toxicology lab only)	(Forensic DNA & Toxicology labs)



Cuyahoga County Medical Examiner's Office – Dr. Thomas P. Gilson, M.D.

2011 County Council Budget Hearing

BUDGET	Current Budget (as of 7/1/11)	Current Estimate (as of 7/1/11)	Current Variance (as of 7/1/11)	Current Variance (as of 7/1/11)
Personnel	\$5,998,830	\$6,047,468	(\$48,638)	(0.8%)
Total Expenses	\$10,065,417	\$9,892,112	\$173,305	1.7%



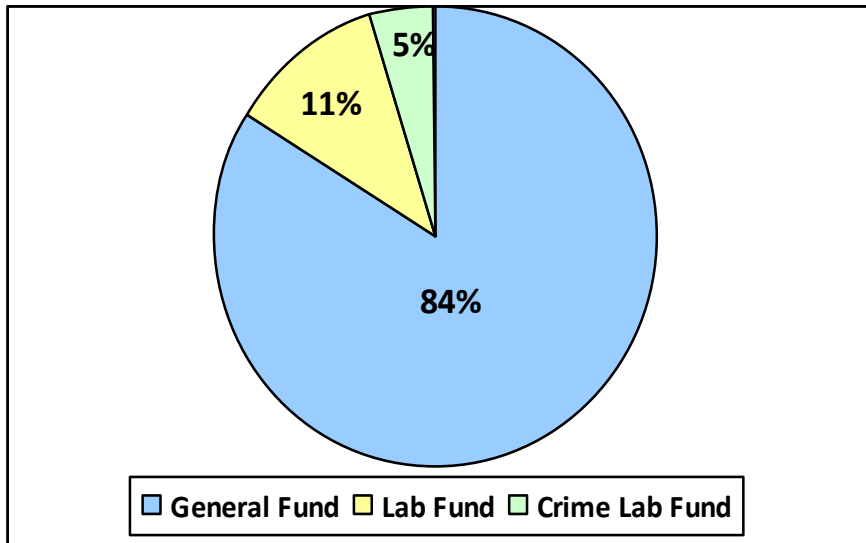
- Personnel costs are expected to increase by more than \$500,000 in 2012 resulting from the inability of the Lab and Crime Lab Funds to support the existing level of payroll expense transfers (\$1.4 million in 2011) from the General Fund. This increase includes the savings associated with the 15 layoffs.
- The 2011 personnel estimate includes a one-time expense of nearly \$200,000 to correct overtime payments.
- The 2011 surplus is largely attributed to benefits (unemployment) and supplies.



Cuyahoga County Medical Examiner's Office – Dr. Thomas P. Gilson, M.D.

2011 County Council Budget Hearing

BUDGET	Current Budget (as of 7/1/11)	Current Estimate (as of 7/1/11)	Current Variance (as of 7/1/11)	Current Variance (as of 7/1/11)
Lab Fund	\$1,378,000	\$1,344,203	\$33,797	2.5%
Crime Lab Fund	\$555,000	\$555,000	\$0	0%



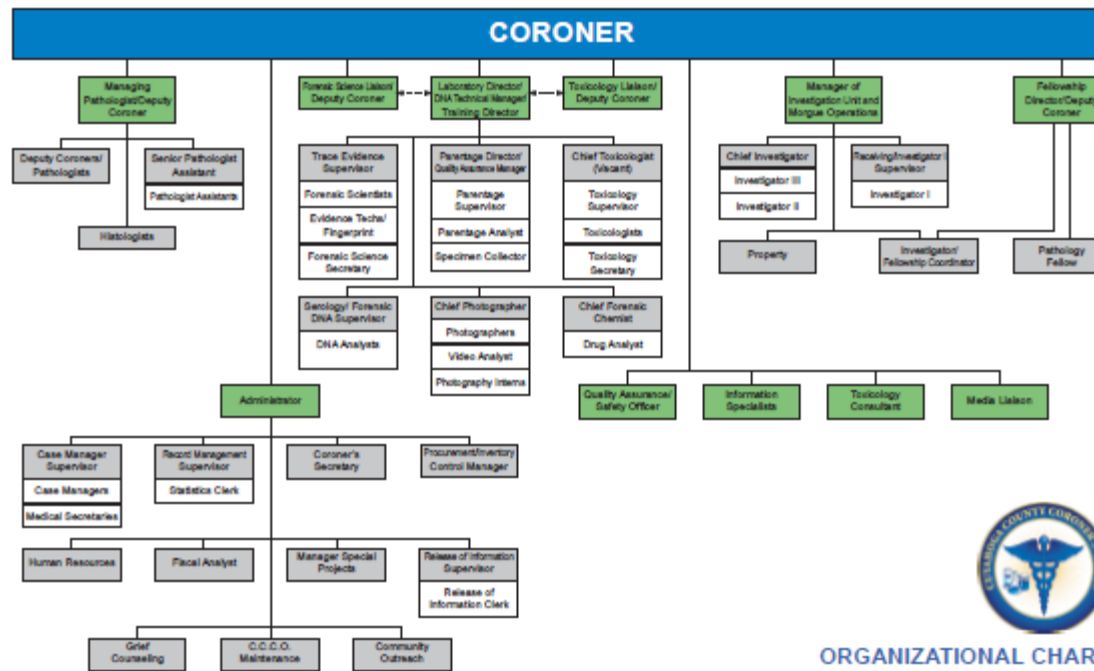
- The Regional Crime Lab operates in 2011 with start-up funding from the Sheriff’s Office (\$200,000, Prosecutor’s Office (\$200,000) and City of Cleveland (\$40,000); no funding has been committed for 2012.
- The Lab Fund is operating in a deficit – meaning current revenue is less than current expenses – in 2011: a beginning cash balance of \$600,000 is being drawn down to cover expenses..



Cuyahoga County Medical Examiner’s Office – Dr. Thomas P. Gilson, M.D.

2011 County Council Budget Hearing Personnel

2010 Organizational Chart (last produced)



ORGANIZATIONAL CHART
CUYAHOGA COUNTY CORONER'S OFFICE



Cuyahoga County Medical Examiner's Office – Dr. Thomas P. Gilson, M.D.

2011 County Council Budget Hearing Personnel

78 FTE's (implemented 13 layoffs at end of May)

6 full-time forensic pathologists (including Dr. Gilson) plus 1 fellow

12 full-time field investigators

Includes crime and medical examiner laboratory staff (forensic chemists, forensic DNA scientists, toxicologists, drug analysts and forensic evidence scientists)



Cuyahoga County Medical Examiner's Office – Dr. Thomas P. Gilson, M.D.

2011 County Council Budget Hearing

Personnel

CURRENT

Forensic Pathologists (5) avg. salary \$125,000 - \$160,000

Lab Directors (4) avg. salary \$100,000 - \$135,000

Forensic scientists and chemists (20) avg. salary \$48,000 - \$53,000

General office workers and secretaries (10) avg. salary \$36,000 - \$45,000

Supervisors (various general office and labs) (9) avg. salary \$54,000 - \$96,000

Field investigators (12) avg. salary \$45,000

Receiving and property investigators (3) avg. salary \$35,000

Pathology assistants (3) avg. salary \$52,000

Histologists (2) avg. salary \$51,000

Photographers (3) avg. salary \$36,500

Information Techs (3) avg. salary \$60,000

Other office specialists (4) \$37,000 - \$50,000



Cuyahoga County Medical Examiner's Office – Dr. Thomas P. Gilson, M.D.

2011 County Council Budget Hearing

Future Considerations

N.A.M.E. Accreditation

National Association of Medical Examiners (N.A.M.E.) Checklist of requirements being reviewed by every unit to prepare for accreditation by end of 2011. Will incorporate as primary goal for CountyStat.

REGIONAL CRIME LAB

Install ballistics, fingerprinting and narcotics labs into current structure by 2012. Working with Advisory Board (County Medical Examiner, Prosecutor, Sheriff and Cleveland Police Chief and suburban Police Chiefs representative) to review structure and funding to ensure continuation of Medical Examiner's Office mission and duties and the performance of regional crime lab activities concurrently, without interference to either and assurance of excellence in both.

Continued Re-Organization and Improvement Plan

Awaiting Classification study results; N.A.M.E. accreditation will largely drive other changes and improvements.



Cuyahoga County Medical Examiner's Office – Dr. Thomas P. Gilson, M.D.