

Ohio State University Extension

*Engaging people to strengthen their lives and communities
through research-based educational programming.*



**THE OHIO STATE
UNIVERSITY**

We are preparing our youth for success.

- Youth Advocacy & Leadership Coalition (formerly known as the Youth Advisory Committee)
- Youth Outdoors Partnership with Cleveland Metroparks
- Career Quest (career exploration and planning for youth in the juvenile detention center)
- Real Money/Real World Financial Literacy Program
- Preparing to Launch (life skills education for youth aging out of the foster care system)
- Agri-STEM (Science, Technology, Engineering & Math) Partnership with CMSD

We are strengthening our families and our communities.

- Cleveland-Cuyahoga County Food Policy Coalition
- *Produce Perks* EBT Incentive Program for Food Assistance Customers at Local Farmers' Markets
- Youth and Adult Expanded Food & Nutrition Education Program
- *Produce Prescriptions* Initiative for Expectant Parents
- Prevention Research Center for Healthy Neighborhoods (Case Western Reserve University)
- Creating Healthy Communities Partnership with the Board of Health
- Cuyahoga County Health Alliance

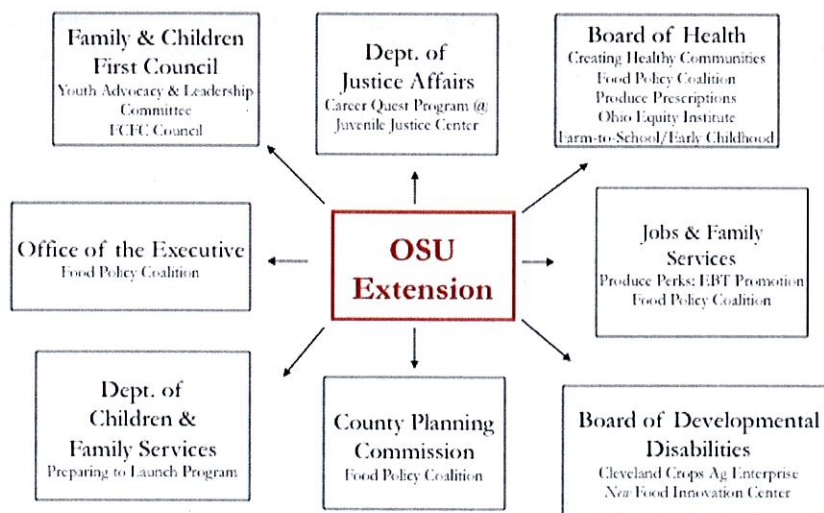
We are enhancing agriculture and the environment.

- School and Community Gardens
- Market Gardens and Urban Farms
- Farm to School/Early Care & Education Programming
- Kinsman Farm/Urban Agriculture Innovation Zone (market incubator farm)
- Dig In! and Cuyahoga Composts Training Programs
- Master Gardener Volunteers

We are advancing employment and income opportunities.

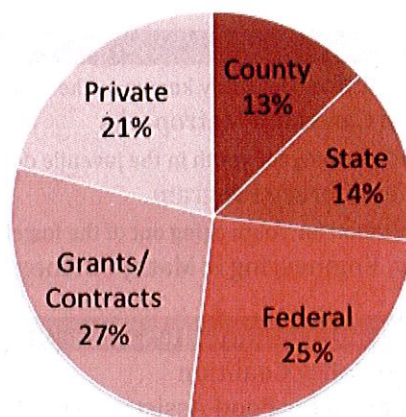
- Cleveland Crops Partnership with the Board of Developmental Disabilities
- Food Innovation Center
- Market Gardener Training Program & Refugee Immigrant Farm Training
- Sustainable Food Business Cluster

We are adding value and expertise to county partnerships.



We are leveraging additional resources to expand our scope and reach.

2013 OSUE Annual Budget (\$1.6M)



We are achieving important outcomes.

- Improved academic, social and life skills
- Improved leadership and communication skills
- Increased grade completion and graduation rates
- Increased access to healthier food
- Improved nutrition and increased physical activity
- Improved employment skills
- Increased economic development opportunities
- Improved environmental factors (soil quality, vacant land reuse, water conservation)

We are continuing to serve as a valued community partner.

- Focus on the county's critical economic, environmental, youth and family issues.
- Engage residents of all ages in lifelong learning.
- Build and support multi-stakeholder partnerships and collaborations.
- Apply knowledge and practical research to the diverse needs of the county's residents.
- Recruit and develop volunteers to multiply Extension's efforts.
- Extend the resources of The Ohio State University and other Land Grant Institutions.
- Teach with cutting-edge strategies using new technologies and approaches.

We are appreciative of the continued support from Cuyahoga County.

Ohio State University Extension- Cuyahoga County*
5320 Stanard Ave.
Cleveland, OH 44103
216-429-8200
www.cuyahoga.osu.edu

*Proudly located at the new Terrence M. Ryan Agricultural Education Center at Stanard Farm.

Cuyahoga County Extension embraces human diversity and is committed to ensuring that all research and related educational programs are available to clientele on a nondiscriminatory basis without regard to age, ancestry, color, disability, gender identity or expression, genetic information, HIV/AIDS status, military status, national origin, race, religion, sex, sexual orientation, or veteran status. This statement is in accordance with United States Civil Rights Laws and the USDA.

Keith L. Smith, Associate Vice President for Agricultural Administration; Associate Dean, College of Food, Agricultural, and Environmental Sciences; Director, Ohio State University Extension; and Gist Chair in Extension Education and Leadership.

For Deaf and Hard of Hearing, please contact Cuyahoga County Extension using your preferred communication (e-mail, relay services, or video relay services). Phone 1-800-750-0750 between 8 a.m. and 5 p.m. EST Monday through Friday. Inform the operator to dial 216-429-8200.