

A Great Start for All:

Investing in Cuyahoga County's Youngest Citizens





Next Generation Model

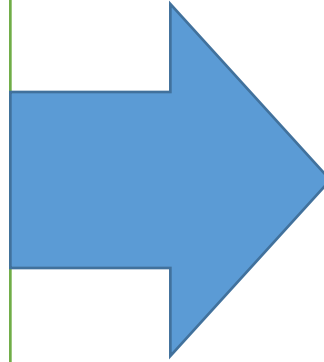
What research tells us

**A snapshot of Cuyahoga
County**

Improving kids' outcomes

Next Generation Model Goals and Outcomes

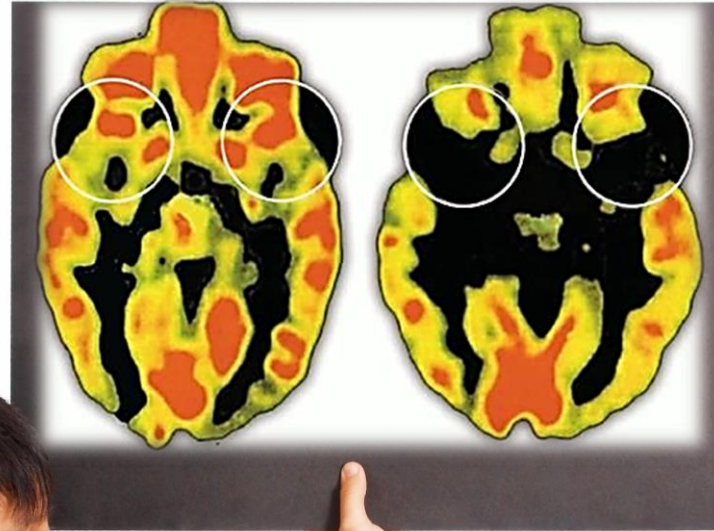
- Focus on the most vulnerable
- Strengthen quality
- Fund what works
- Public-private partnership
- Innovate
- Drive towards scale
- Affordability for families



- Close the School Readiness Gap
- Strengthen Workforce
- Strengthen Economy
- Reduce costs in other areas

Early Experiences Shape Brain Architecture

Normal Sensory Deprived



Normal vs. Deprived Brain
of a Three-Year-Old Child



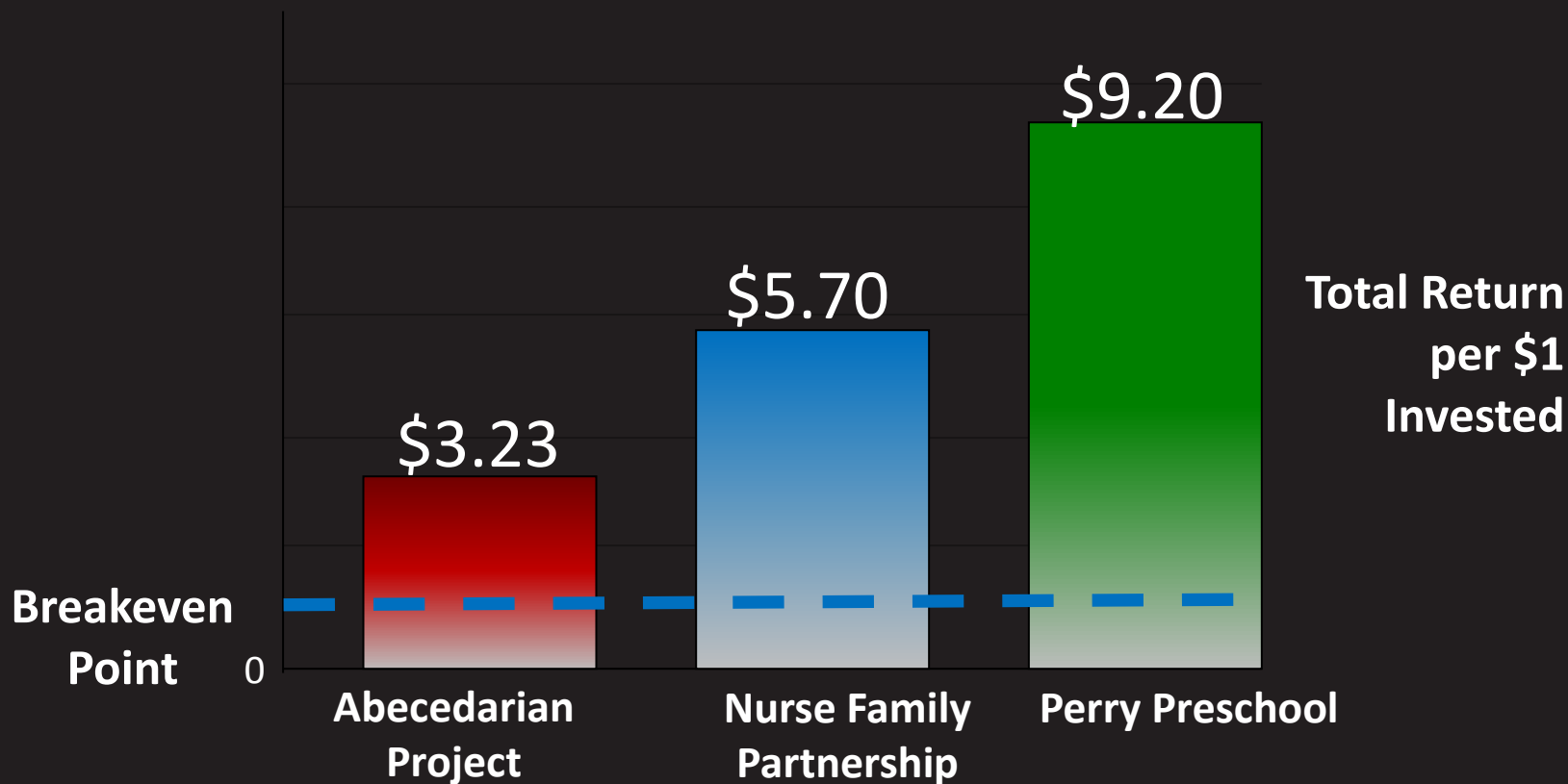
4 Times More Likely To Graduate



If children read at grade level by third grade, they are **4 times** more likely to graduate from high school.

In Cuyahoga County, every 1 point increase in the K “test” **increases by 12%** the odds of passing the Ohio 3rd-grade reading test.

Return On Every Dollar Invested



Cuyahoga County Snapshot



Three-and-Four Year Olds Up to 300% FPL

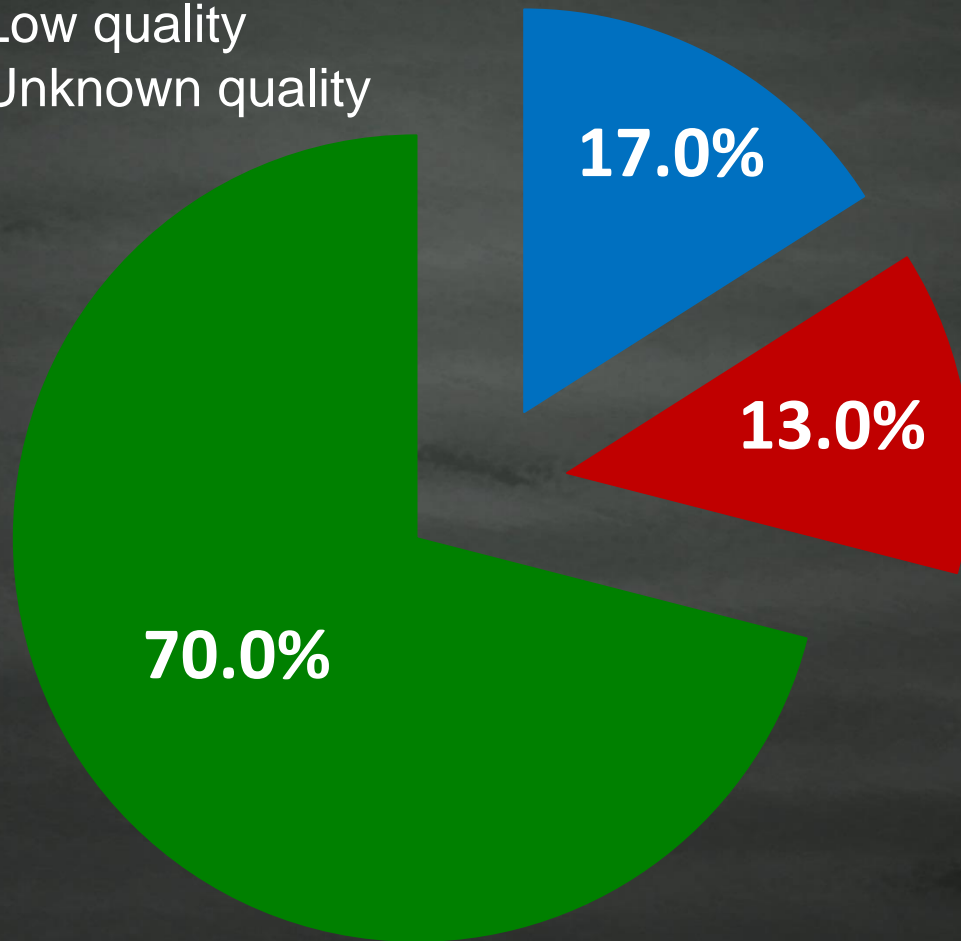
	100%-300% FPL		
	Number of Preschool-Aged Children in Cuyahoga County	Number of Children in High-Quality Preschool in Cuyahoga County	Goal: Estimated 70% take- up for High- Quality Preschool
Cuyahoga County	20,800	4,700	14,500

Source: 2013 ACE 1-year estimates and Starting Point

Note: Use 2010 Census population proportion to estimate population ages 0-5

Cuyahoga County: Early Childhood Quality Supply

- High quality
- Low quality
- Unknown quality



Investing in Our Future

Importance
of starting
early



Evidence
of what
works



1,000s of
children
benefit



Not enough
current
opportunities



Need to
Act

Cuyahoga County Early Childhood Trust

County leadership

Public-private
partnership

Quality imperative

3 areas of focus

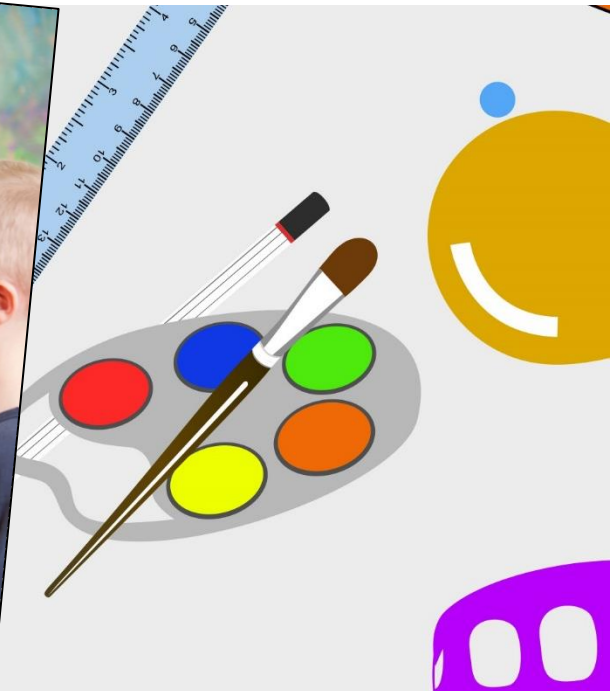
Child Investment

- *Full-day preschool*
- *Family scholarships*
- *High-quality requirements*



Teacher Investment

- *Teacher compensation support*
- *Teacher education*
- *Prof development & coaching*



Family & Community Investment

- *Outreach*
- *Enrollment assistance*



Comparison of Model Elements: UPK, PRE4CLE, Next Generation Model

Program Requirements	UPK	PRE4CLE	Proposed Next Gen Model
Star Level	3-5 stars	3-5 stars	3-5 stars
Lead Teacher Education	Associates degree and working towards BA	Lead teacher BA (phased in)	Lead teacher BA (starting year 3)
Eligibility	All children, scholarship available up to 400% FPL	All children, with focus on up to 300% FPL first	3-5 year olds up to 300% FPL
Ratios	1:10; group size 20	1:10; group size 20	1:10; group size 20
Teacher Compensation	One option on how to use quality funding	Focus on equitable teacher salary	Focus on equitable teacher salary
Family Engagement Plan	Part of UPK model (Epstein Model)	Strong focus on family engagement; exploring models	Strong focus on family engagement; exploring models

Comparison of Model Elements: UPK, PRE4CLE, Next Generation Model, cont.

Program Requirements	UPK	PRE4CLE (as articulated in the plan)	Proposed Next Gen Model
Evaluation	Independent evaluation through CWRU; transitioning to state evaluation	Independent evaluation through CWRU; transitioning to state evaluation	Strong emphasis on evaluation; exact model TBD
Professional Development	Coaching and technical assistance for teachers and administrators	Coaching and technical assistance for teachers and administrators	Coaching and technical assistance for teachers and administrators
Communication and enrollment support	Print materials and info. on IIC website	Comprehensive communications/enrollment campaign	Comprehensive communications/enrollment support

Funding & Next Steps

- Public/private partnership
 - * Steering Committee
- Fully leverage funds
 - * Federal, state, local
- Program design

