

STATISTICAL SURVEY OF CUYAHOGA COUNTY  
CORONER'S OFFICE

CORONER, SAMUEL R. GERBER, M.D.



CUYAHOGA COUNTY  
OCTOBER, 1940  
CLEVELAND, OHIO



STATISTICAL SURVEY OF CUYAHOGA COUNTY  
CORONER'S OFFICE

CORONER, SAMUEL R. GERBER, M. D.

\*\*\*\*\*  
\*\*\*\*\*  
\*\*\*\*\*  
\*\*\*\*  
\*\*  
\*

CUYAHOGA COUNTY  
OCTOBER, 1940  
CLEVELAND, OHIO



## FOREWORD

As Coroner of Cuyahoga County, in addition to the discharge of my usual routine duties incumbent upon me, I have continuously striven, first, to improve the quality of service by the department, second, to encourage the professional staff to do research work along lines that would contribute to the relatively new field of forensic medicine, and third, to contribute to medical and lay knowledge along similar lines myself; to that end, I have contributed analysis of the work of this office from time to time to newspapers to medical literature and other interested publications. The purpose of such action is two fold: First, to keep the public informed of the progress made in the institution they support, second, to further the general knowledge of this branch of science. The latter function is as much a part of the office of Coroner as is the mere static performance of the routine duties. To deny progress by refusing to accept or contribute to it is not only to halt knowledge, but actually to revert to the "horse and buggy" days of practice. This we can prevent by continuously developing and expanding with the march of science.

The Coroner's Office in the progressive parts of the country is no longer comparable to the Coroner's Office at its inception. In some areas, this office has been replaced by the Medical Examiner's System. Though hampered in some degree by antiquated legislative enactments, this and other progressive offices in the country strive to emulate the quality and scope of function of the ideal Medical Examiner's and Coroner's System.

The following report is a statistical survey of the activity of the Cuyahoga County Coroner's Office for the years of 1937, 1938, and 1939, my first three years in office. The data are presented in detail to be available as such to interested parties. It would be highly desirable if such statistical information would be available from all similar offices in the country.

The first two tables in this report classifies, in large categories, all the cases coming to the attention of the Coroner's Office. The next section classifies the types of homicides, suicides, accidents, and miscellaneous deaths. The cases classified as "Natural Causes" are separated by systems into the type of disease causing death. Beginning with Table #10, there is another section in which is presented, in a detailed manner, the work performed in the laboratory during this period. The last half of the paper is devoted to an analysis of the fatal vehicular accidents for the same period. A detailed explanatory note accompanies that portion of this report.

DR. S.R. GERBER, CORNER

CUYAHOGA COUNTY MORGUE

October 1, 1940



TABLE OF CONTENTS

SECTION I	PAGE		PAGE
CLASSIFICATION OF DEATHS		Accidental Deaths, Years 1937, 1938, 1939	
Statistical Table, Years 1937, 1938, 1939		Table No. 7-(C).....	14
Table No. 1.....	1	Accidental Deaths, Years 1937, 1938, 1939	
Type of deaths, Years 1937, 1938, 1939		Table No. 7-(D).....	15
Table No. 2.....	2	Accidental Deaths, Years 1937, 1938, 1939	
Homicides, Years 1937, 1938, 1939		Table No. 7-(E).....	16
Table No. 3.....	3	Miscellaneous Deaths, Years 1937, 1938, 1939	
Homicides, Years 1937, 1938, 1939		Table No. 8.....	17
Table No. 3-(A).....	4	Deaths from Natural Causes, Years 1937, 1938, 1939	
Suicides, Years 1937, 1938, 1939		Table No. 9.....	18
Table No. 4.....	5	Deaths from Natural Causes, Years 1937, 1938, 1939	
Suicides, Years 1937, 1938, 1939		Table No. 9-(A).....	19
Table No. 4-(A).....	6	Deaths from Natural Causes, Years 1937, 1938, 1939	
Marital Condition of Suicides, Years 1937, 1938, 1939		Table No. 9-(B).....	20
Table No. 5.....	7	Deaths from Natural Causes, Years 1937, 1938, 1939	
Marital Condition of Suicides, Years 1937, 1938, 1939		Table No. 9-(C).....	21
Table No. 5-(A).....	8	Deaths from Natural Causes, Years 1937, 1938, 1939	
Age of Suicides, Years 1937, 1938, 1939		Table No. 9-(D).....	22
Table No. 6.....	9	Deaths from Natural Causes, Years 1937, 1938, 1939	
Age of Suicides, Years 1937, 1938, 1939		Table No. 9-(E).....	23
Table No. 6-(A).....	10	Chemical Work, Years 1937, 1938, 1939	
Accidental Deaths, Years 1937, 1938, 1939,		Table No. 10.....	24
Table No. 7.....	11	Chemical Work, Years 1937, 1938, 1939	
Accidental Deaths, Years 1937, 1938, 1939		Table No. 10-(A).....	25
Table No. 7-(A).....	12	Chemical Work, Years 1937, 1938, 1939	
Accidental Deaths, Years 1937, 1938, 1939		Table No. 10-(B).....	26
Table No. 7-(B).....	13	Chemical Work, Years 1937, 1938, 1939	
		Table No. 10-(C).....	27
		Recapitulation of the Coroner's Reports, Years 1937,	
		1938, 1939 Table No. 11.....	28





TABLE OF CONTENTS

SECTION II	PAGE		PAGE
FATAL VEHICULAR ACCIDENTS			
Analysis of Fatal Vehicular Accidents, Years 1937, 1938, 1939.....	29 - 31	Vehicular Fatalities by Month showing Occupation by groups and Sex Table No. 7-(H).....	45
Vehicular Fatalities by Age and Sex Table No. 1 and 2.....	32	Vehicular Fatalities by Month showing Occupation by groups and Sex Table No. 7-(I).....	46
Vehicular Fatalities by Time, Day of Week and Sex Table No. 3.....	33	Vehicular Fatalities showing whether engaged in normal Occupation at time of Accident Table No. 8.....	47
Vehicular Fatalities by Age, Sex and Day of Week Table No. 4.....	34	Vehicular Fatalities by Month showing what drivers were doing: Table No. 9.....	48
Vehicular Fatalities showing vehicle involved and also what Time and Age Groups Table No. 5.....	35	Vehicular Fatalities by Months showing what Pedestrians were doing: Table No. 10.....	49
Vehicular Fatalities showing Type of Accident, and nature of Injury Table No. 6.....	36	Vehicle Fatalities by Months and Condition of Driver Table No. 11.....	50
Vehicular Fatalities by Month showing Occupation by groups and Sex Table No. 7.....	37	Vehicle Fatalities by Months and Condition of Pedestrians Table No. 12.....	50
Vehicular Fatalities by Month showing Occupation by groups and Sex Table No. 7-(A).....	38	Vehicular Fatalities by Months and Condition of Passengers Table No. 13.....	51
Vehicular Fatalities by Month showing Occupation by groups and Sex Table No. 7-(B).....	39	Vehicular Fatalities by Months showing the Condition of the Road Table No. 14.....	51
Vehicular Fatalities by Month showing Occupation by groups and Sex Table No. 7-(C).....	40	Vehicular Fatalities by Months showing Light condition: Table No. 15.....	52
Vehicular Fatalities by Month showing Occupation by groups and Sex Table No. 7-(D).....	41	Vehicular Fatalities by Months showing Weather condition: Table No. 16.....	52
Vehicular Fatalities by Month showing Occupation by groups and Sex Table No. 7-(E).....	42	Distribution of Vehicular Fatalities by Age and Sex Chart No. 1.....	53
Vehicular Fatalities by Month showing Occupation by groups and Sex Table No. 7-(F).....	43	Distribution of Vehicular Fatalities by the Time of the day Chart No. 2.....	53
Vehicular Fatalities by Month showing Occupation by groups and Sex Table No. 7-(G).....	44	Distribution of Vehicular Fatalities by the Day of the Week Chart No. 3.....	54
		Distribution of Vehicular Fatalities by the Month of the Year Chart No. 4.....	54



Table No. 1.

STATISTICAL TABLE FOR YEARS 1937, 1938, 1939										
	CITY			COUNTY			TOTAL			3-Year Total
	1937	1938	1939	1937	1938	1939	1937	1938	1939	
TOTAL NUMBER OF CASES	1118	998	1016	212	239	259	1330	1237	1275	3842
VIOLENT DEATHS	721	596	537	159	187	211	880	783	748	2411
NATURAL CAUSES	380	383	456	52	51	44	432	434	500	1366
ABORTIONS	6	11	7	0	0	3	6	11	10	27
PREMATURE & STILL-BIRTHS	8	7	14	1	1	1	9	8	15	32
UNDETERMINED	3	1	2	0	0	0	3	1	2	6
CASES ON OUTSIDE BOOK	588	460	621	91	121	107	679	581	728	1988
AUTOPSIES	211	175	159	37	25	30	248	200	189	637
CASES FILED WITH COUNTY PROSECUTOR	203	143	147	11	20	12	214	163	159	536
TOTAL DEATHS (Figures from State Dept. of Health)	10345	10048	10287	1330	723	2565	11675	10751	12852	35278
UNCLAIMED AND UNKNOWN BODIES	19	11	7	4	1	8	23	12	15	50
KNOWN AND UNCLAIMED BODIES	108	55	80	21	35	21	129	90	101	320



Table No. 2

TYPE OF DEATHS FOR 1937 1938 1939																		
MONTH	VIOLENT DEATHS						NATURAL DEATHS						ABORTIONS					
	CITY			COUNTY			CITY			COUNTY			CITY			COUNTY		
	1937	1938	1939	1937	1938	1939	1937	1938	1939	1937	1938	1939	1937	1938	1939	1937	1938	1939
JANUARY	54	43	37	8	14	15	37	38	40	4	6	4	0	2	0	0	0	0
FEBRUARY	45	52	46	11	15	15	31	35	44	5	3	5	2	0	0	0	0	0
MARCH	51	55	47	11	18	26	38	27	46	5	6	3	1	1	0	0	0	1
APRIL	41	49	49	10	13	13	37	24	48	4	4	6	0	0	0	0	0	2
MAY	62	50	44	9	17	14	27	39	27	5	3	2	1	1	0	0	0	0
JUNE	53	58	37	15	15	16	34	26	39	4	4	3	0	1	0	0	0	0
JULY	55	64	43	21	17	15	30	28	36	5	4	2	1	1	1	0	0	0
AUGUST	80	52	48	14	18	20	27	33	28	6	4	2	0	1	2	0	0	0
SEPTEMBER	78	50	50	15	16	16	25	24	28	3	4	5	0	0	2	0	0	0
OCTOBER	80	41	46	23	14	18	34	29	39	4	3	3	0	2	1	0	0	0
NOVEMBER	57	36	48	15	13	18	26	38	36	3	6	4	0	1	0	0	0	0
DECEMBER	65	46	42	7	17	25	34	42	45	4	4	5	1	1	1	0	0	0
<i>TOTAL</i>	<i>721</i>	<i>596</i>	<i>537</i>	<i>159</i>	<i>187</i>	<i>211</i>	<i>380</i>	<i>383</i>	<i>456</i>	<i>52</i>	<i>51</i>	<i>44</i>	<i>6</i>	<i>11</i>	<i>7</i>	<i>0</i>	<i>0</i>	<i>3</i>

	PREMATURE & STILL-BIRTHS						UNDETERMINED						TOTAL						3 Yr. Total
	CITY			COUNTY			CITY			COUNTY			CITY			COUNTY			
	1937	1938	1939	1937	1938	1939	1937	1938	1939	1937	1938	1939	1937	1938	1939	1937	1938	1939	
JANUARY	0	1	0	0	0	0	0	0	0	0	0	0	91	84	77	12	20	19	323
FEBRUARY	2	0	0	0	0	0	0	0	0	0	0	0	80	87	90	16	18	20	311
MARCH	0	0	5	0	0	0	0	0	1	0	0	0	90	83	99	16	24	30	342
APRIL	0	0	0	0	0	0	0	0	0	0	0	0	78	73	97	14	17	21	300
MAY	0	0	0	0	1	0	0	0	0	0	0	0	90	90	71	14	21	16	302
JUNE	0	1	0	0	0	0	1	0	0	0	0	0	88	86	76	19	19	19	307
JULY	0	1	1	0	0	0	0	0	0	0	0	0	86	94	81	26	21	17	325
AUGUST	2	1	2	0	0	0	2	0	0	0	0	0	111	87	80	20	22	22	342
SEPTEMBER	0	0	2	1	0	0	0	0	0	0	0	0	103	74	82	19	20	21	319
OCTOBER	4	1	2	0	0	1	0	0	1	0	0	0	118	73	89	27	17	22	346
NOVEMBER	0	1	2	0	0	0	0	0	0	0	0	0	83	76	86	18	19	22	304
DECEMBER	0	1	0	0	0	0	0	1	0	0	0	0	100	91	88	11	21	30	341
<i>TOTAL</i>	<i>8</i>	<i>7</i>	<i>14</i>	<i>1</i>	<i>1</i>	<i>1</i>	<i>3</i>	<i>1</i>	<i>2</i>	<i>0</i>	<i>0</i>	<i>0</i>	<i>1118</i>	<i>998</i>	<i>1016</i>	<i>212</i>	<i>239</i>	<i>259</i>	<i>3342</i>



Table No. 3

HOMICIDES FOR YEARS 1937 1938 1939										
TYPE OF HOMICIDE	CITY			COUNTY			TOTAL			3 YEAR TOTAL
	1937	1938	1939	1937	1938	1939	1937	1938	1939	
SHOOTING	49	51	46	3	3	5	52	54	51	157
STABBING	20	8	12	0	0	0	20	8	12	40
CUTTING	1	4	3	0	0	0	1	4	3	8
ASSAULT	14	10	14	2	3	0	16	13	14	43
DISMEMBERED BODY	3	3	0	0	0	0	3	3	0	6
PUSHED FROM AUTO	1	0	0	0	0	0	1	0	0	1
BURNING	1	0	1	0	0	0	1	0	1	2
STRANGULATION	1	0	2	0	0	0	1	0	2	3
INFANTICIDE	3	0	0	2	0	0	5	0	0	5
AUTO EXHAUST	0	1	0	0	0	0	0	1	0	1
BOMBING	0	0	0	0	0	2	0	0	2	2
TOTAL	93	77	78	7	6	7	100	83	85	268





Table No. 3-A

HOMICIDES Continued (The Following Statistics are Included in the Previous Table)										
	CITY			COUNTY			TOTAL			3 yr. Total
	1937	1938	1939	1937	1938	1939	1937	1938	1939	
AUTOPSIES PERFORMED	82	59	62	4	6	3	86	64	65	215
HOMICIDE BY HUSBAND	8	3	6	0	0	1	8	3	7	18
HOMICIDE BY WIFE	9	0	5	0	0	0	9	0	5	14
JUSTIFIABLE HOMICIDES										
BY POLICE DEPARTMENT	6	7	4	1	1	1	7	8	5	20
BY OTHERS	4	2	4	0	0	2	4	2	6	12
HOMICIDE AND SUICIDE										
BY HUSBAND	3	2	5	0	0	0	3	2	5	10
BY WIFE	0	0	0	0	0	0	0	0	0	0
BY FATHER	0	1	1	0	0	0	0	1	1	2
BY MOTHER	0	0	1	0	0	0	0	0	1	1
BY BROTHER	0	0	1	0	0	0	0	0	1	1
BY LOVER	0	1	0	0	0	0	0	1	0	1
BY BROTHER-IN-LAW	0	0	1	0	0	0	0	0	1	1
BY DIVORCED HUSBAND	0	1	0	0	0	0	0	1	0	1
BY FATHER-IN-LAW	0	0	1	0	0	0	0	0	1	1
RACE										
WHITE	46	39	36	6	6	6	52	45	42	139
COLORED	47	38	42	1	0	1	48	38	43	129



Table No. 4

## SUICIDES FOR YEARS 1937 1938 1939

TYPE OF SUICIDES	CITY			COUNTY			TOTAL			3 yr. Total
	1937	1938	1939	1937	1938	1939	1937	1938	1939	
SHOOTING	30	41	40	15	10	22	45	51	62	158
HANGING	33	49	45	4	15	12	37	64	57	158
CUTTING	9	5	10	1	1	1	10	6	11	27
JUMP FROM BRIDGE	11	9	11	1	1	1	12	10	12	34
JUMP IN FRONT OF TRAIN	1	1	2	0	0	0	1	1	2	4
JUMP FROM ABUTMENT	1	0	0	0	0	0	1	0	0	1
JUMP FROM WINDOW	12	4	7	0	0	0	12	4	7	23
DROWNING	7	10	3	5	3	1	12	13	5	30
BURNING	3	0	1	1	0	0	4	0	1	5
AUTO EXHAUST	10	16	15	2	13	12	12	29	27	68
STABBING	1	0	0	2	0	0	3	0	0	3
JUMP FROM FIRE ESCAPE	0	0	0	1	0	0	1	0	0	1
JUMP FROM BUILDING	0	1	0	0	0	0	0	1	0	1
JUMP FROM BALCONY	0	1	1	0	0	0	0	1	1	2
HANGING AND BURNING	0	0	0	0	0	1	0	0	1	1
ILLUMINATING GAS	0	0	3	0	0	0	0	0	3	3
TOTAL	118	137	138	32	43	51	150	180	189	519



Table No. 4 (A)

SUICIDES FOR YEARS 1937 1938 1939										
TYPE OF SUICIDE	CITY			COUNTY			TOTAL			3 YEAR TOTAL
	1937	1938	1939	1937	1938	1939	1937	1938	1939	
POISONING:										
ARSENIC	2	0	1	0	0	1	2	0	2	4
BARBITURATES	3	7	11	0	2	5	3	9	16	28
BICHLORIDE OF MERCURY	9	10	11	2	0	5	11	10	16	37
CARBOLIC ACID	3	2	2	1	1	0	4	3	2	9
CHLOROFORM	1	0	0	0	0	1	1	0	1	2
IODINE	1	0	1	0	0	0	1	0	1	2
LYE	2	6	1	0	0	0	2	6	1	9
LYSOL	7	5	1	0	1	0	7	6	1	14
RAT POISON	1	0	1	0	0	0	1	0	1	2
SODIUM CYANIDE	1	0	0	2	0	0	3	0	0	3
SULPHURIC ACID	1	0	0	0	0	0	1	0	0	1
VERONAL	1	1	0	0	0	2	1	1	2	4
UNKNOWN POISON	1	0	0	0	0	0	1	0	0	1
AMYTAL	0	1	0	0	0	0	0	1	0	1
LUMINAL	0	4	0	0	1	0	0	5	0	5
MORPHINE	0	0	0	0	1	0	0	1	0	1
MURIATIC ACID	0	1	0	0	0	0	0	1	0	1
CYANIDE	0	3	0	0	0	0	0	3	0	3
NICOTINE	0	2	0	0	0	0	0	2	0	2
NITRIC ACID	0	0	1	0	0	0	0	0	1	1
PHOSPHORUS	0	0	0	0	0	1	0	0	1	1
SODIUM CYANIDE	0	0	1	0	0	0	0	0	1	1
POTASSIUM CYANIDE	0	0	1	0	0	0	0	0	1	1
NEMBTOL	0	0	2	0	0	0	0	0	2	2
ROACH POWDER	0	0	1	0	0	0	0	0	1	1
METHYL SALICYTATE	0	0	1	0	0	0	0	0	1	1
<i>TOTAL</i>	33	42	36	5	6	15	38	48	51	137



Table No. 5

		MARITAL CONDITION OF SUICIDES, FOR YEARS 1937 1938 1939																	
		TOTAL			MARRIED			WIDOWED			SINGLE			DIVORCED			UNKNOWN		
		1937	1938	1939	1937	1938	1939	1937	1938	1939	1937	1938	1939	1937	1938	1939	1937	1938	1939
SHOOTING	Male	42	47	52	28	32	30	7	3	13	7	9	8	0	3	1	0	0	0
	Female	4	4	10	3	3	9	0	0	1	1	1	0	0	0	0	0	0	0
HANGING	Male	30	52	50	13	34	17	8	5	10	7	5	8	1	3	5	1	5	0
	Female	6	10	7	2	6	6	1	2	0	3	2	1	0	0	0	0	0	0
CUTTING	Male	7	4	10	4	2	6	0	1	2	1	1	2	2	0	0	0	0	0
	Female	3	2	1	3	2	1	0	0	0	0	0	0	0	0	0	0	0	0
POISON	Male	19	15	23	14	11	16	2	4	1	3	0	4	0	0	2	0	0	0
	Female	19	34	28	12	18	18	2	4	1	4	12	8	1	0	1	0	0	0
DROWNING	Male	7	8	2	4	4	0	0	1	0	3	3	1	0	0	0	0	0	1
	Female	5	5	3	2	1	1	3	0	1	0	2	1	0	2	0	0	0	0
JUMP FROM BRIDGE	Male	10	9	11	4	5	4	1	0	1	4	3	6	0	0	0	1	1	0
	Female	2	1	1	0	0	0	0	0	0	1	1	1	1	0	0	0	0	0
JUMP FROM WINDOW	Male	6	3	7	5	1	4	0	1	1	1	0	2	0	0	0	0	1	0
	Female	6	1	0	3	1	0	2	0	0	1	0	0	0	0	0	0	0	0
JUMP FROM FIRE ESCAPE	Male	1	0	0	1	0	0	0	0	0	0	0	0	0	0	0	0	0	0
	Female	0	0	0	0	0	0	0	0	0	0	0	0	0	0	0	0	0	0
JUMP FROM ABUTMENT	Male	1	0	0	1	0	0	0	0	0	0	0	0	0	0	0	0	0	0
	Female	0	0	0	0	0	0	0	0	0	0	0	0	0	0	0	0	0	0





Table No. 5-A

TABLE OF MARITAL CONDITION OF SUICIDES, FOR YEARS 1937 1938 1939																			
		TOTAL			MARRIED			WIDOWED			SINGLE			DIVORCED			UNKNOWN		
		1937	1938	1939	1937	1938	1939	1937	1938	1939	1937	1938	1939	1937	1938	1939	1937	1938	1939
JUMP IN FRONT OF TRAIN	Male	1	1	2	0	0	2	0	0	0	1	0	0	0	0	0	0	1	0
	Female	0	0	0	0	0	0	0	0	0	0	0	0	0	0	0	0	0	0
AUTO EXHAUST	Male	8	23	26	7	17	20	0	1	2	1	4	3	0	1	1	0	0	0
	Female	4	6	1	4	5	1	0	0	0	0	1	0	0	0	0	0	0	0
STABBING	Male	2	0	0	0	0	0	1	0	0	1	0	0	0	0	0	0	0	0
	Female	1	0	0	0	0	0	1	0	0	0	0	0	0	0	0	0	0	0
BURNING	Male	2	0	1	2	0	1	0	0	0	0	0	0	0	0	0	0	0	0
	Female	2	0	0	1	0	0	1	0	0	0	0	0	0	0	0	0	0	0
JUMP FROM BALCONY	Male	0	1	1	0	0	0	0	0	0	0	0	1	0	0	0	0	1	0
	Female	0	0	0	0	0	0	0	0	0	0	0	0	0	0	0	0	0	0
JUMP FROM BUILDING	Male	0	0	0	0	0	0	0	0	0	0	0	0	0	0	0	0	0	0
	Female	0	1	0	0	0	0	0	0	0	0	1	0	0	0	0	0	0	0
ILLUMINATING GAS	Male	0	0	2	0	0	1	0	0	0	0	0	1	0	0	0	0	0	0
	Female	0	1	1	0	0	0	0	1	1	0	0	0	0	0	0	0	0	0
BURNING AND HANGING	Male	0	0	0	0	0	0	0	0	0	0	0	0	0	0	0	0	0	0
	Female	0	0	1	0	0	0	0	0	1	0	0	0	0	0	0	0	0	0
<b>TOTAL</b>		<b>188</b>	<b>228</b>	<b>240</b>	<b>113</b>	<b>142</b>	<b>147</b>	<b>29</b>	<b>23</b>	<b>35</b>	<b>39</b>	<b>45</b>	<b>47</b>	<b>5</b>	<b>9</b>	<b>10</b>	<b>2</b>	<b>9</b>	<b>1</b>



Table No. 6

## AGE OF SUICIDES, FOR YEARS 1937 1938 1939

		15 to 19			20 to 24			25 to 29			30 to 34			35 to 39			40 to 44		
		1937	1938	1939	1937	1938	1939	1937	1938	1939	1937	1938	1939	1937	1938	1939	1937	1938	1939
		SHOOTING	MALE	1	0	0	4	1	4	0	2	1	3	3	5	3	6	5	4
	FEMALE	0	0	0	0	1	1	0	1	1	2	0	2	1	0	2	0	0	1
HANGING	MALE	0	0	1	0	2	1	2	3	2	2	2	2	1	2	5	3	6	4
	FEMALE	0	0	0	0	0	1	0	1	0	0	1	0	1	0	0	1	4	2
CUTTING	MALE	0	0	0	0	0	0	0	0	0	1	0	0	0	0	1	0	0	0
	FEMALE	0	0	0	0	0	0	0	0	0	1	0	0	0	0	0	0	1	0
POISON	MALE	0	1	1	1	1	2	1	1	0	0	2	1	0	1	4	4	0	2
	FEMALE	1	4	1	2	1	6	3	2	2	1	2	3	4	3	2	2	10	3
DROWNING	MALE	0	0	0	0	0	0	0	1	0	0	1	1	0	0	0	1	2	0
	FEMALE	0	0	0	0	0	1	0	0	0	1	0	1	1	0	0	0	1	0
JUMP FROM BRIDGE	MALE	0	0	0	1	1	2	1	0	2	1	1	1	1	1	1	0	1	0
	FEMALE	0	0	0	0	0	1	1	0	0	1	0	0	0	0	0	0	0	0
JUMP FROM WINDOW	MALE	0	0	0	1	0	0	0	0	0	0	1	1	0	0	1	0	0	0
	FEMALE	0	0	0	1	0	0	0	0	0	0	0	1	0	0	1	0	0	0
JUMP FROM FIRE ESCAPE	MALE	0	0	0	0	0	0	0	0	0	0	0	0	0	0	0	0	0	0
	FEMALE	0	0	0	0	0	0	0	0	0	0	0	0	0	0	0	0	0	0
JUMP FROM ABUTMENT	MALE	0	0	0	0	0	0	0	0	0	0	0	0	0	0	0	0	0	0
	FEMALE	0	0	0	0	0	0	0	0	0	0	0	0	0	0	0	0	0	0

		45 to 49			50 to 54			55 to 59			60 to 64			65 to 69			70 and over		
		1937	1938	1939	1937	1938	1939	1937	1938	1939	1937	1938	1939	1937	1938	1939	1937	1938	1939
		SHOOTING	MALE	4	9	6	3	9	8	5	3	6	5	4	2	6	4	5	4
	FEMALE	0	0	0	1	0	0	0	0	1	0	2	0	0	0	2	0	0	0
HANGING	MALE	2	6	7	3	12	7	6	11	4	2	5	13	6	1	0	3	2	4
	FEMALE	1	3	1	0	0	2	2	0	0	1	1	0	0	0	0	0	0	1
CUTTING	MALE	1	0	2	0	1	3	1	1	3	2	2	0	1	0	0	1	0	1
	FEMALE	0	0	1	2	0	0	0	0	0	0	0	0	0	0	0	1	0	1
POISON	MALE	4	2	3	2	2	4	3	1	3	2	2	3	2	2	0	0	1	0
	FEMALE	4	4	3	1	6	2	0	2	3	1	0	1	0	0	1	0	0	1
DROWNING	MALE	0	2	1	2	0	0	2	0	0	1	2	0	1	0	0	0	0	0
	FEMALE	0	0	1	0	1	1	1	0	1	1	1	0	2	0	0	0	0	0
JUMP FROM BRIDGE	MALE	1	2	0	1	1	2	2	1	1	1	1	1	1	0	0	0	0	1
	FEMALE	0	0	0	0	1	0	0	0	0	0	0	0	0	0	0	0	0	0
JUMP FROM WINDOW	MALE	0	0	1	3	1	2	0	0	1	0	0	0	0	0	0	0	0	0
	FEMALE	1	0	0	0	0	0	0	0	0	1	0	0	1	1	0	1	1	1
JUMP FROM FIRE ESCAPE	MALE	0	0	0	0	0	0	0	0	0	0	0	0	1	0	0	1	0	0
	FEMALE	0	0	0	0	0	0	0	0	0	0	0	0	1	0	0	0	0	0
JUMP FROM ABUTMENT	MALE	0	0	0	0	0	0	0	0	0	0	0	0	0	0	0	0	0	0
	FEMALE	0	0	0	0	0	0	0	0	0	0	0	0	1	0	0	0	0	0



Table No. 6-A

		AGE OF SUICIDES, FOR YEARS 1937 1938 1939																	
		15 to 19			20 to 24			25 to 29			30 to 34			35 to 39			40 to 44		
		1937	1938	1939	1937	1938	1939	1937	1938	1939	1937	1938	1939	1937	1938	1939	1937	1938	1939
JUMP IN FRONT OF TRAIN	Male	0	0	0	0	0	0	0	0	0	0	0	1	0	0	0	0	1	0
	Female	0	0	0	0	0	0	0	0	0	0	0	0	0	0	0	0	0	0
AUTO EXHAUST	Male	0	0	0	0	0	3	2	2	1	0	4	1	0	5	5	3	1	1
	Female	0	1	0	0	0	0	0	0	0	2	2	0	0	1	0	2	0	1
STABBING	Male	0	0	0	1	0	0	0	0	0	0	0	0	0	0	0	1	0	0
	Female	0	0	0	0	0	0	0	0	0	0	0	0	0	0	0	0	0	0
BURNING	Male	0	0	0	0	0	0	0	0	0	0	0	0	0	0	0	0	0	0
	Female	0	0	0	0	0	0	0	0	0	0	0	0	0	0	0	0	0	0
JUMP FROM BALCONY	Male	0	0	0	0	0	0	0	0	1	0	0	0	0	0	0	0	0	0
	Female	0	0	0	0	1	0	0	0	0	0	0	0	0	0	0	0	0	0
JUMP FROM BUILDING	Male	0	0	0	0	0	0	0	0	0	0	0	0	0	0	0	0	0	0
	Female	0	0	0	0	1	0	0	0	0	0	0	0	0	0	0	0	1	0
ILLUMINATING GAS	Male	0	0	0	0	0	0	0	0	0	0	0	0	0	0	0	0	1	0
	Female	0	0	0	0	0	0	0	0	0	0	0	0	0	0	0	0	0	0
BURNING AND HANGING	Male	0	0	0	0	0	0	0	0	0	0	0	0	0	0	0	0	0	0
	Female	0	0	0	0	0	0	0	0	0	0	0	0	0	0	0	0	0	0
<i>TOTAL</i>		2	6	3	11	8	22	10	13	10	14	19	18	14	20	25	23	31	21

		45 to 49			50 to 54			55 to 59			60 to 64			65 to 69			70 and over		
JUMP IN FRONT OF TRAIN	Male	1	0	0	0	0	0	0	0	0	0	0	1	0	0	0	0	0	0
	Female	0	0	0	0	0	0	0	0	0	0	0	0	0	0	0	0	0	0
AUTO EXHAUST	Male	2	2	4	0	2	4	1	3	3	0	3	2	0	1	2	0	0	0
	Female	0	1	0	0	0	0	0	1	0	0	0	0	0	0	0	0	0	0
STABBING	Male	0	0	0	0	0	0	0	0	0	0	0	0	0	0	0	0	0	0
	Female	0	0	0	0	0	0	0	0	0	0	0	0	0	0	0	0	0	0
BURNING	Male	1	0	0	0	0	1	0	0	0	0	0	0	0	0	0	1	0	0
	Female	1	0	0	0	0	0	0	0	0	0	0	0	0	0	0	1	0	0
JUMP FROM BALCONY	Male	0	0	0	0	0	0	0	0	0	1	0	0	0	0	0	0	0	0
	Female	0	0	0	0	0	0	0	0	0	0	0	0	0	0	0	0	0	0
JUMP FROM BUILDING	Male	0	0	0	0	0	0	0	0	0	0	0	0	0	0	0	0	0	0
	Female	0	0	0	0	0	0	0	0	0	0	0	0	0	0	0	0	0	0
ILLUMINATING GAS	Male	0	0	0	0	0	1	0	0	0	0	0	0	0	0	0	0	0	1
	Female	0	0	0	0	0	0	0	0	0	0	0	1	0	0	0	0	0	0
BURNING AND HANGING	Male	0	0	0	0	0	0	0	0	0	0	0	0	0	0	0	0	0	0
	Female	0	0	0	0	0	0	0	0	0	0	0	0	0	0	1	0	0	0
<i>TOTAL</i>		23	31	30	18	36	37	23	23	25	16	25	24	22	9	12	12	7	13



Table No. 7

ACCIDENTAL DEATHS YEARS 1937 1938 1939											
TYPE OF ACCIDENT		CITY			COUNTY			TOTAL			3-YEAR
		1937	1938	1939	1937	1938	1939	1937	1938	1939	TOTAL
RAILROAD											
Trespassing on Right of Way		7	8	0	5	1	0	12	9	0	21
Crushed between cars on Spur Track		1	0	0	0	0	0	1	0	0	1
Run Over by Train		2	1	5	0	0	0	2	1	5	8
Found Decapitated on Track		0	1	0	2	1	0	2	2	0	4
Working on Tracks		4	2	1	0	0	0	4	2	1	7
Struck by Switch Engine		2	0	0	0	0	0	2	0	0	2
Fell Between Cars		1	2	1	0	1	0	1	3	1	5
Fell From Engine		0	0	2	0	0	0	0	0	2	2
Crossing Tracks		0	0	6	0	0	1	0	0	7	7
Riding Train Struck by Bridge		0	0	1	0	0	0	0	0	1	1
Riding Train, Fell Off		0	0	1	0	0	0	0	0	1	1
Walking on Tracks		0	0	1	0	0	2	0	0	3	3
Playing on Electric Railroad Tracks		0	0	1	0	0	0	0	0	1	1
	TOTAL	17	14	19	7	3	3	24	17	22	63
	AUTOPSIES	0	0	0	0	0	0	0	0	0	0
STRUCK BY FALLING OBJECTS											
Flower Box fell from Porch		1	0	0	0	0	0	1	0	0	1
Railroad tie fell off car		1	0	0	0	0	0	1	0	0	1
Bucket fell from crane		1	0	0	0	0	0	1	0	0	1
Struck by falling Machinery		1	0	0	0	0	0	1	0	0	1
Auto fell off jack		0	1	1	0	0	0	0	1	1	2
Struck by falling Building		0	1	0	0	0	0	0	1	0	1
Struck by falling Clay Bank		0	1	0	0	0	0	0	1	0	1
Chassis fell off dump truck		0	1	0	0	0	0	0	1	0	1
Fire plug fell off Derrick		0	1	0	0	0	0	0	1	0	1
Cement Block fell on worker		0	1	0	0	0	0	0	1	0	1
Piano fell off Truck		0	1	0	0	0	0	0	1	0	1
	TOTAL	4	7	1	0	0	0	4	7	1	12
	AUTOPSIES	0	0	0	0	0	0	0	0	0	0





Table No. 7

## ACCIDENTAL DEATHS, YEARS 1937 1938 1939

TYPE OF ACCIDENT	CITY			COUNTY			TOTAL			3 yr. Total
	1937	1938	1939	1937	1938	1939	1937	1938	1939	
FALLS: From Window	4	1	3	2	1	0	6	2	3	11
Downstairs	17	3	19	1	0	1	18	3	20	41
From Ladder	1	1	1	1	0	0	2	1	1	4
From Scaffold	4	12	2	0	0	0	4	12	2	18
On Street	19	19	7	0	1	0	19	11	7	37
To Floor	5	5	1	0	0	0	5	5	1	11
From Porch	1	4	1	0	0	0	1	4	1	6
From Wagon	0	0	0	1	0	0	1	0	0	1
Down Elevator Shaft	3	0	0	0	0	0	3	0	0	3
From Horse	0	0	0	1	0	0	1	0	0	1
From Street Car	1	0	0	0	0	0	1	0	0	1
From Pile Driver	1	0	0	0	0	0	1	0	0	1
From Bus	1	0	0	0	0	0	1	0	0	1
Fall from Pole	0	0	0	0	1	0	0	1	0	1
Fall from Roof	0	3	2	0	0	1	0	3	3	6
From Bicycle	0	1	0	0	1	0	0	2	0	2
From Auto	0	1	0	0	0	0	0	1	0	1
From Bed	0	2	0	0	0	0	0	2	0	2
From Tree	0	2	1	0	0	0	0	2	1	3
From Bus	0	1	0	0	0	0	0	1	0	1
From Balcony	0	1	0	0	0	0	0	1	0	1
Against Tree	0	0	0	0	1	0	0	1	0	1
From Moving Truck	0	0	3	0	0	1	0	0	4	4
From Cliff	0	0	0	0	0	1	0	0	1	1
Bridge	0	0	2	0	0	0	0	0	2	2
From Smokestack	0	0	1	0	0	0	0	0	1	1
From Fire Escape	0	0	1	0	0	0	0	0	1	1
Into Hole	0	0	1	0	0	0	0	0	1	1
Into Wine Vat	0	0	1	0	0	0	0	0	1	1
Into Basement	0	0	0	0	0	1	0	0	1	1
From Hayloft	0	0	1	0	0	0	0	0	1	1
TOTAL	57	47	47	6	5	5	63	52	52	167
AUTOPSIES	3	1	2	0	0	0	3	1	2	6



Table No. 7-B

ACCIDENTAL DEATHS, YEARS 1937 1938 1939										
TYPE OF ACCIDENT	CITY			COUNTY			TOTAL			3 yr. Total
	1937	1938	1939	1937	1938	1939	1937	1938	1939	
<b>SHOOTING</b>										
Killed while Hunting	0	0	0	2	1	0	2	1	0	3
Killed while at Target Practice	1	0	0	0	0	0	1	0	0	1
Revolver fell from Holster	0	0	0	1	0	0	1	0	0	1
Killed while cleaning Gun	2	0	1	0	0	0	2	0	1	3
Reaching for Gun in back of Auto	1	0	0	0	0	0	1	0	0	1
Playing with Firearms	3	3	1	1	1	1	4	4	2	10
Gun accidentally discharged	0	1	0	0	1	0	0	2	0	2
<i>Total</i>	7	4	2	4	3	1	11	7	3	21
Autopsies	0	0	0	0	0	0	0	0	0	0
<b>POISONING</b>										
Cocaine	1	0	0	0	0	0	1	0	0	1
Nicotine (Tincture)	1	0	0	0	0	0	1	0	0	1
Hydrocyanic Gas	2	0	0	0	0	0	2	0	0	2
Potassium Hydroxide (Lye)	1	0	0	0	0	0	1	0	0	1
Strychnine	1	0	0	1	0	0	2	0	0	2
Neoprasephenemine	1	0	0	0	0	0	1	0	0	1
Bichloride of Mercury	0	2	1	1	0	0	1	2	1	4
Barbiturates	6	3	0	1	1	0	7	4	0	11
Unknown Drug	1	0	0	0	0	0	1	0	0	1
Morphine	0	2	0	0	0	0	0	2	0	2
Chloral Hydrate	0	1	1	0	0	0	0	1	1	2
Amonia	0	1	0	0	0	0	0	1	0	1
Rat-Poison	0	1	0	0	0	0	0	1	0	1
Ipecac	0	1	0	0	0	0	0	1	0	1
Energine	0	0	0	0	0	1	0	0	1	1
Mushroom Poisoning	0	0	1	0	0	0	0	0	1	1
<i>Total</i>	14	11	3	3	1	1	17	12	4	33
Autopsies	5	5	0	1	0	0	6	5	0	11



Table No. 7 (C)

	ACCIDENTAL DEATHS YEARS 1937 1938 1939										3 YEAR Total
	CITY			COUNTY			TOTAL				
	1937	1938	1939	1937	1938	1939	1937	1938	1939		
<b>ASPHYXIATION</b>											
Illuminating Gas	5	3	7	0	0	0	5	3	7	15	
Coal Gas	3	0	0	0	0	0	3	0	0	3	
Auto Exhaust	4	3	3	1	0	1	5	3	4	12	
Strangulation-Play-Pen-Porch	1	0	0	0	0	0	1	0	0	1	
Foreign Body	1	0	0	0	0	0	1	0	0	1	
Anesthesia	2	0	0	0	0	0	2	0	0	2	
Food	1	1	0	0	0	0	1	1	0	2	
Cave-In	2	5	0	0	0	0	2	5	0	7	
Children Suffocated in Bed	0	0	4	0	0	1	0	0	5	5	
	<i>TOTAL</i>	19	12	14	1	0	2	20	12	16	48
	Autopsies	1	3	0	0	1	0	1	4	0	5
<b>DROWING</b>											
Boating	6	1	5	2	1	1	8	2	6	16	
Fell from Pier	4	0	3	0	0	0	4	0	3	7	
Bathing & Swimming	6	12	14	4	9	10	10	21	24	55	
Bath-Tub	2	2	0	1	0	1	3	2	1	6	
Swimming Pool	1	0	0	0	0	0	1	0	0	1	
Refuse Can	1	0	0	0	0	0	1	0	0	1	
Found in Water	7	0	0	2	0	0	9	0	0	9	
Fell through Ice	0	1	0	0	0	2	0	1	2	3	
Fell off Gang-Plank	0	1	0	0	0	0	0	1	0	1	
Fell into River	0	2	0	0	1	0	0	3	0	3	
Wading	0	0	1	0	0	1	0	0	2	2	
Fell from Rock	0	0	1	0	0	0	0	0	1	1	
Swimming and Epilepsy	0	0	1	0	0	0	0	0	1	1	
While Working	0	0	1	0	0	0	0	0	1	1	
	<i>TOTAL</i>	27	19	26	9	11	15	36	30	41	107
	Autopsies	2	1	3	0	0	1	2	1	4	7



Table No.7 (D)

		ACCIDENTAL DEATHS YEARS 1937 1938 1939									
TYPE OF ACCIDENT		CITY			COUNTY			TOTAL			3 YEAR
		1937	1938	1939	1937	1938	1939	1937	1938	1939	TOTAL
<b>BURNS</b>											
Scalds		2	2	0	0	0	0	2	2	0	4
Stove		2	2	0	0	0	0	2	2	0	4
Coal Oil Lamp		1	0	0	0	0	0	1	0	0	1
Electric Heater		1	0	0	0	0	0	1	0	0	1
Smoking in Bed		1	0	0	0	0	1	1	0	1	2
Christmas Tree Fire		0	0	1	0	0	0	0	0	1	1
Clothing Caught Fire		0	0	1	0	0	0	0	0	1	1
	<i>TOTAL</i>	7	4	2	0	0	1	7	4	3	14
	<i>AUTOPSIES</i>	0	0	0	0	0	0	0	0	0	0
<b>CONFLAGRATION</b>											
Fire in Bakery		1	0	0	0	0	0	1	0	0	1
Fire in House		4	2	6	0	1	2	4	3	8	15
Fire in Apartment		3	1	0	0	0	0	3	1	0	4
	<i>TOTAL</i>	8	3	6	0	1	2	8	4	8	20
	<i>AUTOPSIES</i>	0	1	0	0	0	0	0	1	0	1





Table No. 7 (E)

ACCIDENTAL DEATHS YEARS 1937 1938 1939										
TYPE OF ACCIDENT	CITY			COUNTY			TOTAL			3 YEAR
	1937	1938	1939	1937	1938	1939	1937	1938	1939	TOTAL
MISCELLANEOUS ACCIDENTS										
Electrocution	7	1	0	0	0	1	7	1	1	9
Aeroplane	0	0	0	1	12	2	1	12	2	15
Kicked by Horse	0	0	0	1	0	0	1	0	0	1
Crushed in Machinery	6	2	0	2	0	0	8	2	0	10
Crushed between Floor and Elevator	1	1	1	0	0	0	1	1	1	3
Explosion	6	0	6	0	1	0	6	1	6	13
Struck by Shuttle Car	1	0	0	0	0	0	1	0	0	1
Struck by Saw	0	0	0	0	1	0	0	1	0	1
Struck by Lightning	0	2	0	0	3	0	0	5	0	5
Struck by Hopper	0	1	0	0	0	0	0	1	0	1
Accident of Unknown Origin	0	1	0	0	0	0	0	1	0	1
Football Accident	0	1	0	0	0	0	0	1	0	1
Accidental Hanging	0	0	0	0	1	0	0	1	0	1
Swinging on Trolley Pole	0	1	0	0	0	0	0	1	0	1
Tractor Accident	0	0	0	0	0	1	0	0	1	1
Riding Bicycle Hit Door Handle	0	0	0	0	0	1	0	0	1	1
Struck by Cable	0	0	1	0	0	0	0	0	1	1
Struck by Load of Steel	0	0	1	0	0	0	0	0	1	1
Struck by Baseball	0	0	1	0	0	0	0	0	1	1
Under Anesthetic	0	0	1	0	0	0	0	0	1	1
<i>TOTAL</i>	21	10	11	4	18	5	25	28	16	69
AUTOPSIES	0	0	5	0	0	1	0	0	6	6



Table No. 8

		MISCELLANEOUS DEATHS YEARS 1937 1938 1939									
		CITY			COUNTY			TOTAL			3 Year. Total
		1937	1938	1939	1937	1938	1939	1937	1938	1939	
ABORTION:	CRIMINAL	1	5	2	0	0	0	1	5	2	8
	SELF-INDUCED	4	6	5	0	0	2	4	6	7	17
	INEVITABLE	1	0	0	0	0	0	1	0	0	1
	UNDETERMINED	0	0	0	0	0	1	0	0	1	1
	<i>TOTAL</i>	6	11	7	0	0	3	6	11	10	27
	AUTOPSIES	6	7	2	0	0	1	6	7	3	16
STILL-BIRTHS:	PREMATURE BIRTHS	5	3	9	1	0	1	7	3	10	20
	STILL-BIRTHS	2	4	5	0	1	0	2	5	5	12
	<i>TOTAL</i>	8	7	14	1	1	1	9	8	15	32
	AUTOPSIES	6	3	3	1	1	0	7	4	3	14
UNDETERMINED VERDICTS:	ASPHYXIATION	2	0	0	0	0	0	2	0	0	2
	SHOOTING	2	0	0	0	1	0	2	1	0	3
	DROWNING	3	9	8	1	2	3	4	11	11	26
	CAUSE OF DEATH, UNDETERMINED	3	1	2	0	0	0	3	1	2	6
	FALL FROM ROOF	0	1	0	0	0	0	0	1	0	1
	VIOLENCE, UNDETERMINED ORIGIN	0	8	11	0	1	0	0	9	11	20
	POISONING	0	1	2	0	0	1	0	1	3	4
	AUTO EXHAUST	0	0	1	0	0	0	0	0	1	1
	<i>TOTAL</i>	10	20	24	1	4	4	11	24	28	63
	AUTOPSIES	3	3	11	0	1	0	3	4	11	18
EXPOSURE:	TO COLD	3	5	2	2	2	1	5	7	3	15
	TO HEAT	7	4	0	2	0	1	9	4	1	14
	<i>TOTAL</i>	10	9	2	4	2	2	14	11	4	29
	AUTOPSIES	1	1	1	0	0	1	1	1	2	4
ALCOHOLISM:	<i>TOTAL</i>	8	14	4	0	1	0	8	15	4	27
	AUTOPSIES	6	6	0	0	2	0	6	8	0	14



Table No. 9 (A)

DEATHS FROM NATURAL CAUSES YEARS 1937 1938 1939										
	CITY			COUNTY			TOTAL			3 Year Total
	1937	1938	1939	1937	1938	1939	1937	1938	1939	
<b>DISEASES OF THE CIRCULATORY SYSTEM:</b>										
Coronary Sclerosis	2	3	0	0	0	0	2	3	0	5
Arteriosclerosis and Senility	2	0	0	0	0	0	2	0	0	2
Myocarditis and Senility	1	0	0	0	0	0	1	0	0	1
Coronary Embolism	1	0	0	0	0	0	1	0	0	1
Chronic Myocarditis	1	6	0	0	0	0	1	6	0	7
Rheumatic Heart Disease	1	0	0	0	0	0	1	0	0	1
Coronary Thrombosis	1	1	1	0	1	0	1	2	1	4
Angina Pectoris	1	0	0	1	0	0	2	0	0	2
Chronic Varicose Ulcers	1	0	0	0	0	0	1	0	0	1
Arteriosclerosis with Hypertensive heart disease	1	0	2	0	0	0	1	0	2	3
Chronic Myocarditis with parenchymatous nephritis	1	0	0	0	0	0	1	0	0	1
Arteriosclerosis with fibrosis of heart	1	0	0	1	0	0	2	0	0	2
Rheumatic endocarditis with myocardial failure	1	0	0	0	0	0	1	0	0	1
Cardiac Failure	0	6	0	0	0	0	0	6	0	6
Rupture vericose wein with hemorrhage	0	2	0	0	0	0	0	2	0	2
Atherosclerotic stenosis and thrombotic occlusion	0	0	0	0	1	0	0	1	0	1
Old Purulent pericarditis with adhesions	0	1	0	0	0	0	0	1	0	1
Cardiac Hypertrophy in case of Aycrza's disease	0	1	0	0	0	0	0	1	0	1
Transverse rupture of ascending aorta with hemorrhage	0	1	0	0	0	0	0	1	0	1
Pulmonary hemorrhage from ulceration of pulmonary artery by reactivation of old tuberculous focus	0	1	0	0	0	0	0	1	0	1
Cardiac Failure, arteriosclerosis and hypertensive heart disease and acute intoxication	0	0	1	0	0	0	0	0	1	1
Arteriosclerotic heart disease with thrombosis of anterior ramus descendens and extensive infarction of myocardium	0	0	1	0	0	0	0	0	1	1
Cardiac failure, coronary heart disease with atherosclerotic and thrombotic occlusion	0	0	1	0	0	0	0	0	1	1



Table No. 9-B

DEATHS FROM NATURAL CAUSES, YEARS 1937 1938 1939										
	CITY			COUNTY			TOTAL			3 Yr. Total
	1937	1938	1939	1937	1938	1939	1937	1938	1939	
DISEASES OF THE CIRCULATORY SYSTEM (Continued):										
Generalized arteriosclerosis with cardiac hypertrophy cerebral spinal lues	0	0	1	0	0	0	0	0	1	1
Hypertensive heart disease with acute failure	0	0	3	0	0	0	0	0	3	3
Cardiac failure with edema	0	0	1	0	0	0	0	0	1	1
Coronary sclerosis with extensive myocardial fibrosis	0	0	1	0	0	0	0	0	1	1
Arteriosclerotic heart disease, acute coronary thrombosis	0	0	1	0	0	0	0	0	1	1
Generalized arteriosclerosis and uremia	0	0	1	0	0	0	0	0	1	1
Myocardial failure, hypertensive heart disease and heart adiposity	0	0	1	0	0	0	0	0	1	1
Acute myocarditis following upper respiratory infection	0	0	1	0	0	0	0	0	1	1
Cardiac failure, severe arteriosclerotic coronary disease and myocardial fibrosis	0	0	1	0	0	0	0	0	1	1
Myocardial failure luetic aertitis, aortic insufficiency and stenosis of coronary arteries and myocardial fibrosis and necrosis	0	0	0	0	0	1	0	0	1	1
Acute congestion, cardiac failure & bilateral pleural effusion	0	0	1	0	0	0	0	0	1	1
Cardiac failure, coronary thrombosis, terminal pneumonia	0	0	1	0	0	0	0	0	1	1
Luetic heart disease with luetic aneurysm & cardiac failure	0	0	1	0	0	0	0	0	1	1
Generalized arteriosclerosis and cardiac hypertrophy and failure, peripheral vascular disease, inguinal hernia, bilateral cataract	0	0	1	0	0	1	0	0	2	2
Cardiac failure, chronic casseous pulmonary tuberculosis	0	0	1	0	0	0	0	0	1	1
TOTAL	15	22	22	2	2	2	17	24	24	65
AUTOPSIES	2	6	11	1	1	1	3	7	12	22





Table No. 9 (C)

DEATHS FROM NATURAL CAUSES YEARS 1937 1938 1939										
	CITY			COUNTY			TOTAL			3 Year Total
	1937	1938	1939	1937	1938	1939	1937	1938	1939	
<b>DISEASES OF THE RESPIRATORY SYSTEM:</b>										
Pulmonary tuberculosis	5	5	10	0	0	0	5	5	10	20
Bronchopneumonia	8	2	2	0	0	0	8	2	2	12
Lobar Pneumonia	1	1	2	0	0	0	1	1	2	4
Pulmonary emphysema	1	0	0	0	0	0	1	0	0	1
Influenza and Bronchopneumonia	1	0	0	0	0	0	1	0	0	1
Carcinoma of lung, chronic pulmonary emphysema	0	0	1	0	0	0	0	0	1	1
Carcinoma of larynx with metastasis, laryngeal obstruction	0	0	1	0	0	0	0	0	1	1
<i>TOTAL</i>	16	8	16	0	0	0	16	8	16	40
AUTOPSIES	1	1	0	0	0	0	1	1	0	2
<b>DISEASES OF THE DIGESTIVE SYSTEM:</b>										
Pyloric ulcer with malignancy	1	0	0	0	0	0	1	0	0	1
Malignancy of Pylorus	1	0	0	0	0	0	1	0	0	1
Hemorrhage from esophageal varicosity from cirrhosis of liver	2	0	0	0	0	0	2	0	0	2
Cirrhosis of liver	0	1	0	0	0	0	0	1	0	1
Cancer of abdomen	0	1	1	0	0	0	0	1	1	2
Generalized peritonitis following ruptured appendix	0	1	0	0	0	0	0	1	0	1
Carcinoma head of pancreas	0	0	0	0	0	1	0	0	1	1
Fatty cirrhosis of liver, passive hyperemia of liver and spleen, hypertensive heart disease	0	0	1	0	0	0	0	0	1	1
Secondary hemorrhage in gastric ulcer	0	0	1	0	0	0	0	0	1	1
Carcinoma of stomach with metastasis of pelvis and liver	0	0	1	0	0	0	0	0	1	1
<i>TOTAL</i>	4	3	4	0	0	1	4	3	5	12
AUTOPSIES	2	0	0	0	0	0	2	0	0	2



Table No. 9 (D)

DEATHS FROM NATURAL CAUSES YEARS 1937 1938 1939										
	CITY			COUNTY			TOTAL			3 Year Total
	1937	1938	1939	1937	1938	1939	1937	1938	1939	
<b>DISEASES OF THE GENITO-URINARY SYSTEM:</b>										
Eclampsia	1	0	0	0	0	0	1	0	0	1
Perinephric abscess following abortion	1	0	0	0	0	0	1	0	0	1
Generalized acute peritonitis following hemorrhage from the uterus	1	0	0	0	0	0	1	0	0	1
Peritonitis following septic abortion	2	0	0	0	0	0	2	0	0	2
Septicemia following abortion	1	0	0	0	0	0	1	0	0	1
Peritonitis and acute obstruction following inevitable abortion	1	0	0	0	0	0	1	0	0	1
Chronic Glomerule nephritis	0	1	0	0	0	0	0	1	0	1
Uremic poisoning	0	1	0	0	0	0	0	1	0	1
Toxemia of pregnancy	0	1	0	0	0	0	0	1	0	1
Rupture of uterus, right cernua, placenta accreta with considerable generalized and acute fibrinopurulent peritonitis and septicemia	0	0	1	0	0	0	0	0	1	1
Carcinoma of urinary bladder	0	0	1	0	0	0	0	0	1	1
Acute nephrosis in 7 months pregnancy	0	0	1	0	0	0	0	0	1	1
Acute interstitial nephritis with uremia	0	0	1	0	0	0	0	0	1	1
<i>TOTAL</i>	7	3	4	0	0	0	7	3	4	14
<i>AUTOPSIES</i>	3	3	2	0	0	0	3	3	2	8
<b>INFECTIOUS AND SKIN DISEASES:</b>										
Erysipelas of face	0	1	0	0	0	0	0	1	0	1
Cancer of face, nose and eyes	0	0	0	0	1	0	0	1	0	1
Extensive infection of right leg, acute & chronic alcoholism	0	0	1	0	0	0	0	0	1	1
<i>TOTAL</i>	0	1	1	0	1	0	0	2	1	3
<i>AUTOPSIES</i>	0	0	0	0	0	0	0	0	0	0



Table No. 9 (E)

DEATHS FROM NATURAL CAUSES YEARS 1937 1938 1939										
TYPE OF DISEASES	CITY			COUNTY			TOTAL			3 YEAR TOTAL
	1937	1938	1939	1937	1938	1939	1937	1938	1939	
<b>GENERALIZED DISEASES:</b>										
Diabetes mellitus	2	2	0	0	0	0	2	2	0	4
Malnutrition	1	0	0	0	0	0	1	0	0	1
Diabetes mellitus with acidosis	1	0	0	0	0	0	1	0	0	1
Status Thymico-Lymphaticus	2	0	0	0	0	0	2	0	0	2
Premature neglect and exposure	1	0	0	1	0	0	2	0	0	2
Senility	2	1	0	0	0	0	2	1	0	3
Status Thymico-lymphaticus with lymphoblastic leukemia	1	0	0	0	0	0	1	0	0	1
Senile marasmus	1	0	0	0	0	0	1	0	0	1
Staphylococcus cellulitis of face, neck and eye	1	0	0	0	0	0	1	0	0	1
Generalized carcinomatosis	1	0	0	0	0	0	1	0	0	1
Chronic Myelogenous leukemia	0	1	0	0	0	0	0	1	0	1
Thrombocytopenic purpura with hemorrhage of myocardium	0	1	0	0	0	0	0	1	0	1
Birth trauma and asphyxia	0	0	1	0	0	0	0	0	1	1
Addison's disease	0	0	1	0	0	0	0	0	1	1
Probable nitritoid crisis following intravenous injection of neoarsphenamine	0	0	1	0	0	0	0	0	1	1
<i>TOTAL</i>	13	5	3	1	0	0	14	5	3	22
Autopsies	2	2	0	1	0	0	2	2	0	4
<b>BONE DISEASES:</b>										
Sarcoma of Right Femur	0	1	0	0	0	0	0	1	0	1
Malignant tumor of left side of jaw with marked generalized emaciation	0	0	1	0	0	0	0	0	1	1
<i>TOTAL</i>	0	1	1	0	0	0	0	1	1	2
AUTOPSIES	0	0	0	0	0	0	0	0	0	0



Table No 10

CHEMICAL WORK YEARS 1937 1938 1939									
	1937			1938			1939		
HISTOLOGICAL SECTIONS		6000			5000			1750	
	Positive	Negative	Total	Positive	Negative	Total	Positive	Negative	Total
<b>BACTERIOLOGY AND SEROLOGICAL TESTS</b>									
<b>AT COUNTY MORGUE</b>									
Nature of Test									
Smears	69	2	71	63	12	75	68	14	82
Cultures	19	0	19	15	1	16	20	7	27
Blood Cultures	10	3	13	12	6	18	17	4	21
Klines	9	9	18	9	27	36	6	16	22
	107	14	121	99	40	145	111	41	152
<b>MISCELLANEOUS TESTS</b>									
Sperm	3	11	14	2	1	3			
Hematology:									
Smears									15
Counts									5
Hemoglobin									10
Blood Chemistry									
Sugar	1	0	1						62
Chlorides	4	0	4			7			2
Creatinine						1			28
Tissue Stains			75			97			100
Special Bacteriological Stains						7			
Blood Typing			50			50			40
Hair	100	0	100			25			
Microscopic Examination of Stomach contents for foreign material			1			2			
Blood Films						21			
Microscopic examination of bladder						1			
Occult Blood on Stomach contents						4			
Paraldehyde						1			
Ureas									40
Non-Protein Nitrogen									61
Uric Acid									7
	108	11	245	2	1	219			370
<b>AT INSTITUTE OF PATHOLOGY - WESTERN RESERVE UNIVERSITY:</b>									
Nature of Test									
Liver	0	1	1						
Kidneys	0	1	1						
Viscera	0	1	1						
Cinchophen	0	1	1						
Phosphorus	0	1	1						
Arsenic	0	1	1						
	9	6	6						





Table No. 10 (A)

CHEMICAL WORK YEARS 1937 1938 1939									
	1937			1938			1939		
	POSITIVE	NEGATIVE	TOTAL	POSITIVE	NEGATIVE	TOTAL	POSITIVE	NEGATIVE	TOTAL
<b>ALCOHOLIC DETERMINATIONS</b>									
<b>AT COUNTY MORGUE SOURCE</b>									
Urine	203	140	343	167	145	312	152	110	262
Blood	207	197	404	208	227	435	192	224	416
Spinal Fluid	67	47	114	13	5	18			
Bladder Substance	0	1	1						
Stomach Contents	8	2	10	10		10	10	3	13
Liver							0	1	1
	485	387	872	398	377	775	354	338	692
<b>ALCOHOL TESTS AT MORGUE FOR CLEVELAND POLICE DEPT.</b>									
Urine	374	7	381	70	5	75			
<b>ALCOHOL TESTS AT MORGUE FROM HOSPITAL SURVEY</b>									
Blood	5	0	5	7	0	7	7	0	7
Urine	78	116	194	11	0	11	8	0	8
	83	116	199	18	0	18	15	0	15
<b>TOTAL ALCOHOL TEST</b>			1452			868			707
<b>OTHER URINARY TESTS</b>									
<b>NATURE OF TEST</b>									
Sugar (Quantitative)	57	813	870	16	123	139	2	10	12
Acetone	17	22	39	4	7	11	0	3	3
Albumin	2	7	9	1		1	4	12	16
Bile Pigments	2	8	10	3	4	7			
Microscopic			12			10			7
Specific Gravity			15			7			10
Occult Blood					3	3			
	78	850	955	24	137	178	6	25	48
X-RAY Plates			20			25			20
<b>CHEMICAL TESTS FOR POISONS</b>									
Carbon Monoxide	23	8	32	44	5	49	37	11	48
(One Undetermined)									



Table No. 10 (B)

CHEMICAL WORK YEARS 1937 1938 1939				
CHEMICAL TESTS FOR POISONS (Continued)				
1937				
MATERIAL EXAMINED	KIND OF POISON	POSITIVE	NEGATIVE	TOTAL
PRESCRIBED MEDICINE "REDUCING" PSYLLIUM	NITRATES	1	1	2
	HYDROCYANIC ACID	1	0	1
	ALIPHATIC HYPNOTICS	0	1	1
	ORGANIC POISONS		1	1
	INORGANIC POISONS EXCEPT HEAVY METALS		1	1
	ARSENIC	1		1
	OTHER METALS		1	1
	LYSOL	1		1
	COMPLETE HEAVY METAL ANALYSIS		1	1
			1	
BRAIN	OPIUM		1	1
	POISONS	1	2	3
	ARSENIC	1		1
MUSCLE, BLADDER, RECTUM, ESOPHAGUS	POISONS		2	2
	DRUGS		1	1
BURLAP, BONE, FLESH	SEDATIVES		1	1
	DRUGS		1	1
VISCERA	POISONS		1	1
	LIME CALCIUM OXIDE	1		1
VISCERA	SULFATE	1		1
	POISONS		1	1
STOMACH CONTENTS AND VISCERA	DRUGS		1	1
	TOTAL	9	17	27
1938				
TWO TABLETS	ARSENIC		2	2
	COMPLETE DRUG ANALYSIS:			
VISCERA	ACETONILID	1		
	SALICYLATES ANALYSIS	1		
VISCERA	COMPLETE POISON ANALYSIS:			
	ALKALOIDS		1	
	HEAVY METALS		1	
	BARBITURATES		1	
	BARBITURATE DERIVATIVE		1	
VISCERA	COMPLETE POISON ANALYSIS:			1
	ALKALOIDS		1	
STOMACH CONTENTS	HEAVY METALS		1	
	ARSENIC	1		
	BARBITURATES		1	
LIVER AND LUNG	COMPLETE POISON ANALYSIS			1
	ALKALOIDS		1	
	HEAVY METALS		1	
MUSCLE	COMPLETE POISON ANALYSIS			1
	ALIPHATIC HYPNOTICS		1	
	NARCOTICS		1	
	HEAVY METALS		1	
MUSCLE	COMPLETE POISON ANALYSIS	2		
	MORPHINE		2	
	HEAVY METALS		2	
	BARBITURATES		2	
MUSCLE	COMPLETE POISON ANALYSIS			1
	ALIPHATIC HYPNOTICS		1	
	NARCOTICS		1	
MUSCLE	HEAVY METALS		1	



Table No. 10 (C)

CHEMICAL WORK YEARS 1937 1938 1939				
CHEMICAL TESTS FOR POISONS (CONTINUED)				
MATERIAL EXAMINED	KIND OF POISON	1938 (Continued)		
		POSITIVE	NEGATIVE	TOTAL
CONTENTS OF BUCKET	CONSTITUENTS			1
	CRANKEASE DRAININGS	1		
	BLOOD	1		
	HAIR	1		
SAND AND FLESH FROM TORSO	COMPLETE SPECTROGRAPHIC ANALYSIS:			8
	SILICON	8		
	ALUMINUM	8		
	IRON	8		
	MANGANESE	8		
	CHROMIUM	8		
	CALCIUM	8		
	MAGNESIUM	8		
	TRACE OF COPPER	8		
	TRACE OF SODIUM	8		
	TRACE OF POTASSIUM	8		
	TRACE OF LEAD	8		
	TRACE OF ZINC	8		
	<i>TOTAL</i>	104	20	17
			1939	
BLOOD	FLUORIDE		1	1
	CYANIDE		1	1
MILK	HEAVY METALS		2	2
	TOXIC ALKALOIDS		2	2
STOMACH CONTENTS	HEAVY METALS		2	2
	TOXIC ALKALOIDS		2	2
	PHENOL	1		1
URINE	BARBITURATES	1	3	4
	PARALDEHYDE	2		2
MUSCLE	FORMALDEHYDE		2	2
VISCERA	HEAVY METALS	3	7	10
	ARSENIC	1	9	10
	MERCURY	2	8	10
	ALKALOIDS	1	6	7
	ERGOT	1		1
	NON-VOLATILE	2	2	4
	BARBITURATES	2	2	4
	VOLATILE	2	1	3
	PHENOL	1		1
	CRESOL	1	1	2
MEDICINE (ANALYSIS)				
COUGH SYRUP	STRYCHNINE		2	2
	MORPHINE		2	2
	TERPINE HYDRATE	2		2
TABLETS	ERGOT	1		1
	CASCARA	1		1
	PHENOBARBITAL	1	1	2
	<i>TOTAL</i>	25	56	81



Table No. 11

RECAPITULATION OF THE CORONER'S REPORTS FOR YEARS 1937 1938 1939			
	1937	1938	1939
Bodies received at County Morgue	1300	1237	1275
Unknown and Unclaimed Bodies	23	12	15
Known and Unclaimed Bodies	129	90	101
Deaths investigated, but bodies not brought to County Morgue.	679	581	728
Cases filed with County Prosecutor	214	163	159
Autopsies Performed	248	200	189
Laboratory Tests	8832	6503	6108
LABORATORY WORK			
Histological Sections	6000	5000	4750
Alcohol Determinations	1452	868	707
Other Urinary Tests	955	178	48
Chemical Poison Tests	59	68	81
Bacteriology and Serological	121	145	152
Miscellaneous Tests	245	244	370
<i>TOTAL</i>	8832	6503	6108
ANALYSIS OF BODIES RECEIVED AT MORGUE			
Deaths caused by Motor Vehicles	347	240	217
Deaths from Natural Causes	432	434	500
Homicides	100	83	85
Suicides	188	228	240
Struck by falling objects	4	7	1
Railroad Accidents	24	17	22
Shooting Accidents	11	7	3
Miscellaneous Casualties	41	76	52
Accidental Falls	63	52	52
Accidental Poisonings	17	12	4
Asphyxiations	20	12	16
Accidental Drownings	36	30	41
Accidental Burns	7	4	3
Conflagrations	8	4	8
Exposure to cold and heat	14	11	4
Abortions	6	11	10
Still-Births and Prematures	9	8	15
Undetermined	3	1	2
<i>TOTAL</i>	1330	1237	1275
CASH TURNED IN TO COUNTY TREASURER			
Cash received for certified verdicts	\$231.00	\$237.00	\$169.00
Morgue Fees	810.00	650.00	660.00
Indigent Burial	000.00	000.00	25.00
Indigent and Unclaimed monies	167.73	211.00	177.61
Sale of Unclaimed Property	53.31	25.00	66.34
Telephone Refund Money	000.00	18.00	21.06
<i>TOTAL</i>	\$1262.04	\$1143.00	\$1119.01





ANALYSIS OF FATAL VEHICLE ACCIDENTS OF 1937 1938 AND 1939

By

CORONER, SAMUEL S. R. GERBER, M.D.

CUYAHOGA COUNTY MORGUE  
CLEVELAND, OHIO

(RELEASED MARCH 25, 1940)



## ANALYSIS OF FATAL VEHICLE ACCIDENTS OF 1937, 1938 AND 1939

By

CORONER, S. R. GERBER, M.D.  
CUYAHOGA COUNTY MORGUE, CLEVELAND, OHIO

During the years of 1937, 1938 and 1939, 806 cases of human fatality due directly or indirectly to vehicular accidents were seen at the County Morgue. Inasmuch as a fatality resulting from a vehicular accident, with the exception of "Acts of God," entirely appears to be, in the majority of cases, a useless and unnecessary death and because of the wide spread interest in traffic accidents throughout the country stimulated by the National Safety Council, I have tried to analyze all of our cases in order that through some constructive conclusions, these deaths may be avoided. To my knowledge, a detailed analysis such as this does not exist in print.

The accompanying charts contain the raw data for this analysis. From table #1, it can be seen that victims of every age group are represented from the ages of 1 to 80 and over. The greatest number of victims are individuals between the ages of 50 and 54 with only slightly fewer in the age group of 20 and 74. The majority of the victims are males who outnumber the females by 4 to 1.

From table #2, it can be seen that, by far, the greatest number of victims are adults. About 1 in every 8 are children.

In the study of the seemingly complex table #3, it is possible to analyze the occurrence of the fatalities by days of the week and by the time of day the accident occurred. It is to be noted that these accidents occurred practically during any hour of the day or night. The lowest incidence of fatalities occurred be-

tween the hours of 9 and 11 in the morning. The highest incidence occurred between 8 and 9 in the evening. The greatest proportion of deaths occurred in the hours between 6 P.M. and 3 A.M. It is also significant to note that the highest incidence of accidents causing fatalities among children of school age occurred on Friday and Saturday. Those accidents causing deaths occurring on school days, it is to be noted, happened for the most part during the hours of going to and from school, and in the evening.

In table #4, the fatalities, by the day of the week, are more concisely tabulated. From this table, it can be seen that, by far, the greatest number of deaths occurred as the result of accidents on Friday, Saturday and Sunday.

In table #5, we have a very instructive analysis. Here, the fatal accidents are analyzed chiefly according to the type of accident, but also separated into age groups and the hour of the day during which the accident occurred. If we take into consideration pedestrians who were struck by trucks and street-cars, as well as automobiles, the total percentage of all these deaths would be 63. Insofar as school children are concerned, it would appear that the automobile, truck and street-car are chiefly responsible for their death. However, a significant number are killed riding bicycles. Another important factor in the death of adults is the type of accident involving two automobiles or an automobile and a truck, street-car or train. A not-inconsiderable number occur when automobiles struck safety-zones.



From table #6, we have an analysis of the nature of the injuries sustained in the accidents, leading to the death of the individual, and an analysis of the type of accident that resulted in these fatalities. In many of these cases, autopsies were not performed, so the exact nature of the cause of death cannot be fully determined. It can be seen that such cases are classified as "Undetermined internal injuries." There are 197 in this group of 806 cases. Where ascertainable, it can be noted that, by far, the most frequent cause of death in automobile accidents is the fractured skull. Death of this kind occurred in every type of conceivable accident. Very frequently, death occurred from fractured ribs and crushed chest usually following accidents involving two automobiles or an automobile and a pedestrian. Fractured arms and legs resulted chiefly when a pedestrian was injured by an automobile. Fracture of the spine also occurred frequently. Injuries to the heart occurred in a small number of cases where automobiles struck pedestrians. Fractured pelvic bones appears to be relatively common, chiefly in automobile-pedestrian types of accidents. In a small number of instances, where two automobiles crashed, fires resulted in 2nd and 3rd degree body burns, causing death of these individuals. In a small number of cases, chiefly when the automobile struck a safety-zone, the large blood vessels of the neck were cut with death resulting from secondary hemorrhage. A few unusual types of deaths were encountered, namely, deaths from drowning when automobiles went over an embankment into the water, or in one instance, where an individual stepped out of a car into a puddle of water at the same time touching an electrified wire.

Table #7 is self-explanatory. It can be seen that the

majority of the 625 victims of these vehicular accidents on whom the data is available came from the ranks of the skilled and unskilled labor. The housewives comprise another relatively large group. Business men and women, students and people retired from active work make up a not-inconsiderable group of victims. Professional people, by far, are least numerous among the victims.

In table #8, we have an exceedingly interesting analysis, showing whether the individual who was killed was engaged in regular occupation or not at the time of the accident. Analysis shows that of these individuals, only a very small fraction of the total (37 out of the 806) were engaged in their regular occupation, and these individuals were males. Not a single case of death in females occurred while they were engaged in their regular occupation and not all of the victims were housewives.

From table #9, in the majority of the cases, the driver of an automobile had disregarded the law in one or more ways. Death, in small number of cases, was due to utter carelessness; the remainder, to negligence.

In table #10, we have a similar analysis pertaining to the pedestrians who were killed and what they were doing at the time of their death. From this, it can be seen that negligence or carelessness on the part of the pedestrian contributed materially to his death.

From tables #11, 12 and 13, we have an analysis of the drivers of cars, other occupants and pedestrians according to their physical condition at the time of their death. It can be seen that the majority of the victims had no physical defect and that a large proportion of the adults were under the influence of liquor.



In table #14, we have an analysis of the accidents in relation to the condition of the road on which the accident occurred and from this it can be seen that, by far, the greatest number of accidents occurred on well-paved dry roads.

Analysis of the tables #15 and 16 shows that the majority of the accidents occurred under average lighting condition and in good weather. In a very small number of cases could the accidents only be definitely attributed to darkness, poor lighting conditions or inclement weather.

#### SUMMARY AND CONCLUSION

To summarize, it would appear that, by far, the greatest number of deaths occurred in healthy individuals, chiefly adults who were not in their regular occupation at the time of their death. Most of these deaths occurred in the evening and early morning hours and during the week-end. The accidents resulting in these deaths occurred when the weather conditions were good and on roads that were paved, dry and under average lighting conditions. At the time of the accident, it was also shown that most of the individuals were either careless or negligent. In only a small percentage of the cases, could death be attributed to accidents that were entirely unavoidable. In the majority of cases the injuries causing death were severe, most frequently fractured skulls.

In regard to the children of school age it is to be emphasized that during the hours of school, protection is afforded these children. Some of the accidents occurred in the hours during which they travel to and from school. The majority, however, oc-

curred in vacation periods, chiefly over the week-ends and in the evenings.

From this, it can be concluded that in the majority of instances, the death of the individual is at least contributed to or caused by his own fault during the period when he is at leisure and his caution is relaxed.

If we take into consideration that were it not due to extreme caution of many other drivers of vehicles and other pedestrians, the total number of vehicular deaths would probably be much greater. As it is, there are two possible procedures we may use, whereby the number of fatalities may be materially reduced. One is education of the individuals to correct their faults or carelessness, and the other, emphasizing caution on part of both drivers of vehicles and of pedestrians.





Table No 1

## VEHICLE FATALITIES BY AGE AND SEX

	UNDER 5	5-9	10-14	15-19	20-24	25-29	30-34	35-39	40-44	45-49	50-54	55-59	60-64	65-69	70-74	75-79	80 AND OVER	TOTAL
TOTAL	25	36	24	28	58	44	38	56	66	62	77	64	70	60	53	20	25	806
MALE	15	24	23	21	44	33	31	42	49	56	61	51	59	43	41	14	18	625
FEMALE	10	12	1	7	14	11	7	14	17	6	16	13	11	17	12	6	7	181

Table No. 2

## VEHICLE FATALITIES BY AGE GROUPS AND SEX

	MALE	FEMALE	TOTAL
ADULT	552	153	705
SCHOOL CHILD	58	18	76
PRE-SCHOOL	15	10	25
TOTAL	625	181	806



Table No. 3

## VEHICLE FATALITIES BY TIME, DAY OF WEEK, AND SEX

TIME	TOTAL	SUNDAY						MONDAY						TUESDAY						WEDNESDAY						THURSDAY						FRIDAY						SATURDAY					
		ADULT		SCHOOL		PRE-SCHOOL		ADULT		SCHOOL		PRE-SCHOOL		ADULT		SCHOOL		PRE-SCHOOL		ADULT		SCHOOL		PRE-SCHOOL		ADULT		SCHOOL		PRE-SCHOOL		ADULT		SCHOOL		PRE-SCHOOL							
		M	F	M	F	M	F	M	F	M	F	M	F	M	F	M	F	M	F	M	F	M	F	M	F	M	F	M	F	M	F	M	F	M	F	M	F						
12 midnite 12.59 A.M.	50	13	2	0	1	0	0	5	0	0	0	0	0	2	0	0	0	0	0	4	0	0	0	0	0	3	0	0	0	0	0	5	2	1	0	0	0	11	0	0	1	0	0
1.00 A.M. 1.59 A.M.	40	16	2	1	0	0	0	2	0	0	0	0	0	1	1	0	0	0	0	0	0	0	0	0	0	1	1	0	0	1	0	3	0	0	0	0	0	7	3	1	0	0	0
2.00 A.M. 2.59 A.M.	30	9	3	0	0	0	0	3	0	0	0	0	0	1	0	0	0	0	0	1	0	0	0	0	0	0	0	0	0	0	0	1	1	0	0	0	0	7	3	1	0	0	0
3.00 A.M. 3.59 A.M.	18	6	1	0	0	0	0	0	0	0	0	0	0	1	0	0	0	0	0	1	0	0	0	0	0	2	0	0	0	0	0	1	0	0	0	0	0	4	2	0	0	0	0
4.00 A.M. 4.59 A.M.	15	5	1	0	0	0	0	1	0	0	0	0	0	0	0	0	0	0	0	1	0	0	0	0	0	2	0	0	0	0	0	2	0	0	0	0	0	3	0	0	0	0	0
5.00 A.M. 5.59 A.M.	15	4	1	0	0	0	0	1	0	0	0	0	0	0	0	0	0	0	0	0	0	0	0	0	0	1	1	0	0	0	0	1	1	0	0	0	0	4	0	1	0	0	0
6.00 A.M. 6.59 A.M.	15	1	0	0	0	0	0	2	1	0	0	0	0	3	0	0	0	0	0	2	0	0	0	0	0	2	1	0	0	0	0	2	0	0	0	0	0	1	0	0	0	0	0
7.00 A.M. 7.59 A.M.	22	2	1	0	0	0	0	2	0	0	0	0	0	3	1	0	0	0	0	3	0	0	0	0	0	3	0	1	0	0	0	2	1	0	0	0	0	2	1	0	0	0	0
8.00 A.M. 8.59 A.M.	21	0	2	0	0	0	0	4	0	1	0	0	0	2	1	2	0	0	0	0	1	0	1	0	0	0	2	0	0	0	0	0	0	1	0	0	0	3	0	1	0	0	0
9.00 A.M. 9.59 A.M.	13	1	1	0	0	0	0	0	0	0	0	0	0	1	0	0	0	0	0	0	1	0	0	0	1	1	0	0	0	0	0	3	1	2	0	0	0	1	0	0	0	0	0
10.00 A.M. 10.59 A.M.	13	1	1	0	0	1	3	0	0	0	0	0	1	1	0	0	0	0	1	0	0	0	0	0	0	0	0	0	1	0	1	0	1	0	0	0	2	0	0	0	0	0	
11.00 A.M. 11.59 A.M.	27	4	0	0	0	0	3	0	0	0	0	0	2	0	0	1	0	0	2	1	1	1	0	0	0	1	0	0	0	0	2	2	1	0	0	0	1	2	1	0	0	2	
12 noon 12.59 P.M.	22	1	0	1	0	1	3	0	0	0	0	0	2	0	1	1	0	0	1	0	0	0	1	0	0	0	0	0	0	0	1	1	0	0	0	0	5	1	1	0	0	1	
1.00 P.M. 1.59 P.M.	20	3	0	1	0	0	0	0	1	0	0	0	0	4	0	0	0	0	0	2	1	0	0	0	0	1	0	0	0	0	0	3	1	1	0	0	0	1	1	0	0	0	0
2.00 P.M. 2.59 P.M.	31	5	2	0	0	0	0	3	1	0	0	0	4	0	0	0	0	0	1	2	0	0	0	0	1	2	0	0	1	0	3	2	0	0	1	0	1	2	1	0	0	0	
3.00 P.M. 3.59 P.M.	29	0	0	0	0	0	1	1	1	0	0	0	3	1	1	0	0	0	0	1	1	1	0	0	3	2	2	0	0	0	2	0	1	0	2	0	5	1	0	0	1	0	
4.00 P.M. 4.59 P.M.	35	3	1	1	0	1	0	0	0	0	0	0	1	1	0	0	0	0	3	1	0	0	0	0	4	1	0	0	0	0	5	0	1	0	1	0	7	1	2	0	0	0	
5.00 P.M. 5.59 P.M.	37	3	1	1	0	0	1	3	0	0	0	0	7	1	1	0	0	0	2	0	0	0	0	0	3	1	0	0	0	0	4	1	0	1	1	0	5	0	1	0	0	0	
6.00 P.M. 6.59 P.M.	55	4	2	0	0	1	3	1	0	0	0	0	7	1	1	0	0	1	3	1	2	0	0	0	2	1	2	0	0	0	3	1	3	0	1	1	10	3	1	0	0	0	
7.00 P.M. 7.59 P.M.	63	7	1	0	0	0	9	0	2	0	0	0	6	1	0	0	0	0	7	1	0	0	0	0	3	0	0	0	2	0	4	1	0	0	0	0	12	5	1	1	0	0	
8.00 P.M. 8.59 P.M.	71	5	0	0	0	0	1	4	2	0	0	1	3	3	1	1	0	1	6	1	0	0	0	1	6	2	1	0	0	0	7	4	1	1	1	0	14	3	1	0	0	0	
9.00 P.M. 9.59 P.M.	65	9	3	0	0	0	3	2	0	0	0	0	5	2	0	0	0	0	7	3	1	0	0	1	5	0	1	0	0	0	7	1	0	0	0	0	10	1	1	2	0	1	
10.00 P.M. 10.59 P.M.	49	8	4	1	0	0	4	0	1	0	0	0	5	1	0	0	0	0	0	2	1	0	0	0	5	2	0	0	0	0	7	2	0	0	0	0	4	2	0	0	0	0	
11.00 P.M. 11.59 P.M.	50	8	1	0	1	0	5	2	0	0	0	0	4	2	0	0	0	0	4	0	0	0	0	0	3	0	0	0	0	0	4	1	1	0	0	0	11	3	0	0	0	0	
TOTAL	806	118	30	6	2	2	2	59	16	7	0	0	1	68	17	7	3	0	2	53	15	5	3	1	3	51	17	7	0	4	1	72	24	13	2	6	1	131	34	14	4	1	4



Table No. 4

## VEHICLE FATALITIES BY AGE, SEX, AND DAY OF WEEK

DAY	TOTAL	UNDER 5		5-9		10-14		15-19		20-24		25-29		30-34		35-39		40-44		45-49		50-54		55-59		60-64		65-69		70-74		75-79		OVER 80	
		M	F	M	F	M	F	M	F	M	F	M	F	M	F	M	F	M	F	M	F	M	F	M	F	M	F	M	F	M	F	M	F		
SUNDAY	161	2	1	5	1	2	0	1	4	17	5	8	3	4	2	9	2	8	2	10	1	13	3	14	2	13	1	9	4	6	3	3	0	3	0
MONDAY	82	0	1	3	0	2	0	1	0	3	0	4	1	5	1	5	1	6	1	8	2	9	3	6	1	2	0	2	3	8	2	0	1	1	0
TUESDAY	97	0	1	3	4	1	0	4	0	7	3	6	1	2	0	2	0	9	2	5	2	6	1	4	1	7	4	6	0	4	2	4	0	5	1
WEDNESDAY	80	1	2	3	4	1	0	2	0	0	0	1	1	2	1	6	1	2	3	5	1	5	3	6	1	9	1	5	0	5	0	0	2	6	1
THURSDAY	80	4	1	3	0	3	0	2	0	2	0	2	1	3	1	6	3	6	1	5	0	5	1	3	0	8	5	6	2	3	2	1	0	0	1
FRIDAY	119	6	0	5	3	5	0	4	0	5	2	5	3	3	0	3	4	7	2	8	1	12	4	8	1	4	2	8	0	5	2	3	1	1	2
SATURDAY	187	1	4	2	0	9	1	6	3	10	4	8	1	10	2	11	3	11	6	17	2	11	2	9	5	17	1	7	3	10	3	3	0	3	2
TOTAL	806	14	10	24	12	23	1	20	7	44	14	34	11	29	7	42	14	49	17	58	9	61	17	50	11	60	14	43	12	41	14	14	4	19	7









Table No. 6

## VEHICLE FATALITIES SHOWING TYPE OF ACCIDENT, AND NATURE OF INJURY

NATURE OF INJURY	TOTAL	AUTO-AUTO	AUTO-PEDESTRIAN	AUTO-TRUCK	AUTO-BICYCLE	AUTO-TRAIN	AUTO-ST. CAR	PEDESTRIAN TRUCK	AUTO-SAFETY ZONE	PEDESTRIAN ST. CAR	OTHERS
FRACTURED SKULL	440	46	240	12	7	19	10	30	10	11	55
CRUSHED BODY	1	0	0	0	0	0	1	0	0	0	0
CRUSHED CHEST FRACTURED RIBS	21	4	10	0	0	0	1	1	2	0	3
INTERNAL INJURIES	197	17	105	6	2	5	6	17	7	0	32
CONCUSSION OF BRAIN	34	6	22	1	0	1	0	0	2	0	2
FRACTURED EXTREMITIES	39	2	33	1	0	0	0	0	1	0	2
DISLOCATED OR FRACTURED SPINE	29	3	17	2	0	1	0	0	0	0	6
LACERATED OR CONTUSED HEART	6	0	6	0	0	0	0	0	0	0	0
FRACTURED PELVIS	14	3	7	0	0	0	1	1	0	0	2
BRAIN HEMORRHAGE & LACERATION	10	1	9	0	0	0	0	0	0	0	0
2ND & 3RD DEGREE BODY BURNS	6	5	0	0	0	0	0	0	0	0	1
DROWNING	3	0	0	0	0	0	0	0	0	0	3
LACERATED NECK	4	0	0	1	0	0	0	0	3	0	0
FRACTURED JAW & PNEUMONIA	1	1	0	0	0	0	0	0	0	0	0
ELECTROCUTION	1	0	0	0	0	0	0	0	0	0	1
<i>TOTAL</i>	806	88	449	23	9	26	19	49	25	11	107



Table No. 7

## VEHICLE FATALITIES BY MONTHS SHOWING OCCUPATIONS BY GROUPS AND SEX

GROUP	TOTAL		JAN.		FEB.		MAR.		APR.		MAY		JUNE		JULY		AUG.		SEPT.		OCT.		NOV.		DEC.	
	M	F	M	F	M	F	M	F	M	F	M	F	M	F	M	F	M	F	M	F	M	F	M	F	M	F
BUSINESS	65	7	6	0	6	0	3	0	6	1	4	0	3	0	9	1	4	0	3	0	8	1	3	0	10	4
SKILLED LABOR	228	9	22	0	20	0	20	0	13	0	16	0	20	1	18	0	15	3	21	1	16	0	19	1	30	1
UNSKILLED LABOR	155	11	10	4	10	1	8	1	9	0	14	0	13	0	14	2	10	1	22	1	18	0	20	1	7	0
HOUSEWIVES	0	106	0	12	0	7	0	2	0	9	0	7	0	11	0	8	0	9	0	10	0	15	0	10	0	5
PROFESSIONAL	6	5	2	0	0	1	0	2	1	0	1	0	0	1	0	0	1	0	0	1	0	0	0	0	0	1
PRE-SCHOOL	15	10	0	0	0	0	0	1	0	2	1	1	4	1	1	1	1	2	4	1	1	0	2	0	1	1
RETIRED	43	1	2	0	4	0	3	0	2	0	4	0	2	0	5	0	3	1	5	0	9	0	1	0	3	0
STUDENTS	58	18	1	2	5	1	7	0	2	2	4	0	5	0	9	3	10	2	2	2	2	4	2	0	7	4
NOT STATED	55	14	4	1	3	0	3	2	6	0	3	0	1	0	0	0	2	3	8	1	11	0	15	4	0	3
TOTAL	625	181	47	19	48	10	44	8	39	14	47	8	48	14	56	15	46	21	65	17	65	20	62	16	58	19

(The Following Pages Are Grouped By Individual Occupations Of The Victims)



Table No. 7 (A)

## VEHICLE FATALITIES BY MONTHS SHOWING OCCUPATION AND SEX

OCCUPATION	TOTAL		JAN.		FEB.		MAR.		APRIL		MAY		JUNE		JULY		AUG.		SEPT.		OCT.		NOV.		DEC.	
	M	F	M	F	M	F	M	F	M	F	M	F	M	F	M	F	M	F	M	F	M	F	M	F	M	F
AUTO MECHANIC	1	0	0	0	0	0	1	0	0	0	0	0	0	0	0	0	0	0	0	0	0	0	0	0	0	0
ASSEMBLER	1	0	0	0	0	0	1	0	0	0	0	0	0	0	0	0	0	0	0	0	0	0	0	0	0	0
ATTORNEY	3	0	0	0	0	0	0	0	0	0	1	0	0	0	0	0	1	0	0	0	1	0	0	0	0	0
AUTO-REPAIR	1	0	0	0	0	0	0	0	1	0	0	0	0	0	0	0	0	0	0	0	0	0	0	0	0	0
AUTO RACER	2	0	0	0	0	0	0	0	0	0	0	0	2	0	0	0	0	0	0	0	0	0	0	0	0	0
AIR TOOL OPERATOR	1	0	0	0	0	0	0	0	0	0	0	0	0	0	0	1	0	0	0	0	0	0	0	0	0	0
BARBER	3	0	2	0	1	0	0	0	0	0	0	0	0	0	0	0	0	0	0	0	0	0	0	0	0	0
BLACKSMITH	3	0	1	0	0	0	0	0	0	0	0	0	0	0	0	0	0	0	0	1	0	1	0	0	0	0
BOX-MAKER	2	0	1	0	0	0	0	0	0	0	0	0	0	0	0	0	0	0	0	1	0	0	0	0	0	0
BUFFER	1	0	0	0	0	0	0	0	0	0	1	0	0	0	0	0	0	0	0	0	0	0	0	0	0	0
BAKER	3	0	0	0	0	0	0	0	0	0	0	0	0	0	2	0	1	0	0	0	0	0	0	0	0	0
BOILER MAKER	2	0	0	0	0	0	0	0	0	1	0	0	0	0	0	0	1	0	0	0	0	0	0	0	0	0
BUTCHER	2	0	0	0	0	0	0	0	0	0	0	1	0	0	0	0	0	0	0	0	0	0	0	1	0	0
BARTENDER	1	0	0	0	0	0	0	0	0	0	0	0	0	0	0	1	0	0	0	0	0	0	0	0	0	0
BRICKLAYER	6	0	0	0	0	0	0	0	1	0	0	0	0	0	0	1	0	0	0	1	0	2	0	1	0	0
BROKER	1	0	0	0	0	0	0	0	0	0	0	0	0	0	0	0	0	0	0	0	0	0	0	1	0	0
BUS-DRIVER	1	0	0	0	0	0	0	0	0	0	0	0	0	0	0	0	0	0	0	0	0	1	0	0	0	0



Continuation Of Table No. 7

OCCUPATION	TOTAL		JAN.		FEB.		MAR.		APR.		MAY		JUNE		JULY		AUG.		SEPT.		OCT.		NOV.		DEC.		
	M	F	M	F	M	F	M	F	M	F	M	F	M	F	M	F	M	F	M	F	M	F	M	F	M	F	
BAGGAGE MAN	1	0	0	0	0	0	0	0	1	0	0	0	0	0	0	0	0	0	0	0	0	0	0	0	0	0	0
CARPENTER	11	0	1	0	1	0	0	0	1	0	1	0	3	0	0	0	0	0	1	0	2	0	1	0	0	0	0
CLERK	9	4	0	0	1	0	0	0	1	0	1	0	0	0	3	1	0	0	1	0	1	1	0	0	1	2	
CUSTODIAN	3	0	0	0	0	0	0	0	1	0	0	0	0	0	1	0	0	0	0	0	0	0	0	0	1	0	
CONTRACTOR	6	0	0	0	0	0	0	0	2	0	0	0	1	0	1	0	1	0	0	0	0	0	0	0	1	0	
CARETAKER	3	0	0	0	1	0	0	0	0	0	0	0	0	0	0	0	0	0	1	0	0	0	1	0	0	0	
CHEMICAL ENGINEER	1	0	1	0	0	0	0	0	0	0	0	0	0	0	0	0	0	0	0	0	0	0	0	0	0	0	
CAFE PROPRIETOR	1	0	0	0	0	0	1	0	0	0	0	0	0	0	0	0	0	0	0	0	0	0	0	0	0	0	
CEMENT FINISHER	1	0	0	0	0	0	1	0	0	0	0	0	0	0	0	0	0	0	0	0	0	0	0	0	0	0	
COACH-MAN	1	0	0	0	0	0	1	0	0	0	0	0	0	0	0	0	0	0	0	0	0	0	0	0	0	0	
CIGAR MAKER	1	0	0	0	0	0	0	0	0	0	0	0	0	0	1	0	0	0	0	0	0	0	0	0	0	0	
CHEF	1	0	0	0	1	0	0	0	0	0	0	0	0	0	0	0	0	0	0	0	0	0	0	0	0	0	
COOK	0	1	0	0	0	0	0	0	0	0	0	0	0	0	0	0	1	0	0	0	0	0	0	0	0	0	
CRANE OPERATOR	1	0	0	0	0	0	0	0	0	0	0	0	1	0	0	0	0	0	0	0	0	0	0	0	0	0	
CASE HARDENER	1	0	0	0	1	0	0	0	0	0	0	0	0	0	0	0	0	0	0	0	0	0	0	0	0	0	
COREMAKER	1	0	0	0	1	0	0	0	0	0	0	0	0	0	0	0	0	0	0	0	0	0	0	0	0	0	
DENTIST	1	0	0	0	0	0	0	0	0	0	0	0	0	0	0	0	0	0	0	1	0	0	0	0	0	0	
DISH-WASHER	2	0	0	0	0	0	0	0	0	0	0	0	0	0	0	0	0	0	0	1	0	0	0	1	0	0	





Continuation of Table No. 7 (C)

OCCUPATION	TOTAL		JAN.		FEB.		MAR.		APR.		MAY		JUNE		JULY		AUG.		SEPT.		OCT.		NOV.		DEC.		
	M	F	M	F	M	F	M	F	M	F	M	F	M	F	M	F	M	F	M	F	M	F	M	F	M	F	
DAIRY-MAN	1	0	0	0	1	0	0	0	0	0	0	0	0	0	0	0	0	0	0	0	0	0	0	0	0	0	0
DOCK-HELPER	1	0	0	0	1	0	0	0	0	0	0	0	0	0	0	0	0	0	0	0	0	0	0	0	0	0	0
DECORATOR	1	0	0	0	0	0	0	0	1	0	0	0	0	0	0	0	0	0	0	0	0	0	0	0	0	0	0
DISTRIBUTOR	1	0	0	0	0	0	0	0	0	0	0	0	0	0	0	0	0	0	1	0	0	0	0	0	0	0	0
DIETICIAN	0	1	0	0	0	0	0	1	0	0	0	0	0	0	0	0	0	0	0	0	0	0	0	0	0	0	0
DOMESTIC	0	1	0	1	0	0	0	0	0	0	0	0	0	0	0	0	0	0	0	0	0	0	0	0	0	0	0
DRAFTSMAN	1	0	0	0	0	0	0	0	0	0	0	0	0	0	0	0	0	0	0	0	1	0	0	0	0	0	0
ENGINEER	6	0	2	0	0	0	0	0	1	0	0	0	1	0	0	0	0	0	0	0	0	0	1	0	1	0	0
ELECTRICIAN	3	0	0	0	0	0	0	0	0	0	1	0	0	0	1	0	0	0	0	0	0	0	0	0	1	0	0
ELEVATOR OPERATOR	2	0	0	0	0	0	0	0	0	0	0	0	0	0	1	0	0	0	1	0	0	0	0	0	0	0	0
FIREMAN	2	0	0	0	0	0	0	0	1	0	0	0	0	0	1	0	0	0	0	0	0	0	0	0	0	0	0
FARMER	10	0	1	0	0	0	0	0	1	0	0	0	1	0	2	0	2	0	2	0	0	0	1	0	0	0	0
FOREMAN	3	0	1	0	0	0	0	0	1	0	0	0	0	0	0	0	0	0	1	0	0	0	0	0	0	0	0
FURNITURE MANUFACTURER	1	0	0	0	0	0	1	0	0	0	0	0	0	0	0	0	0	0	0	0	0	0	0	0	0	0	0
FACTORY HAND	2	1	0	0	0	0	0	0	0	0	1	0	0	1	0	0	0	0	0	0	0	0	1	0	0	0	0
GARAGE MAN	2	0	1	0	0	0	0	0	0	0	0	0	0	0	0	0	0	0	0	0	0	0	0	0	1	0	0
GAS ATTENDANT	1	0	1	0	0	0	0	0	0	0	0	0	0	0	0	0	0	0	0	0	0	0	0	0	0	0	0



Continuation of Table 7 (D)

OCCUPATION	TOTAL		JAN.		FEB.		MAR.		APR.		MAY		JUNE		JULY		AUG.		SEPT.		OCT.		NOV.		DEC.	
	M	F	M	F	M	F	M	F	M	F	M	F	M	F	M	F	M	F	M	F	M	F	M	F	M	F
GARDNER	5	1	0	0	0	0	1	0	1	0	0	0	1	0	0	0	0	0	1	1	1	0	0	0	0	0
GLAZIER	1	0	0	0	1	0	0	0	0	0	0	0	0	0	0	0	0	0	0	0	0	0	0	0	0	0
GROCER	1	0	0	0	1	0	0	0	0	0	0	0	0	0	0	0	0	0	0	0	0	0	0	0	0	0
HOUSEMOTHER	0	1	0	0	0	0	0	0	0	0	0	0	0	0	0	0	0	0	0	0	0	0	0	1	0	0
HOUSEWIFE	0	106	0	12	0	7	0	2	0	9	0	7	0	11	0	8	0	9	0	10	0	15	0	11	0	5
HAMMERMAN	1	0	0	0	0	0	1	0	0	0	0	0	0	0	0	0	0	0	0	0	0	0	0	0	0	0
HELPER	2	0	0	0	0	0	0	0	0	0	0	0	1	0	1	0	0	0	0	0	0	0	0	0	0	0
HOUSEWORK	0	5	0	0	0	1	0	0	0	0	0	0	0	0	0	1	0	2	0	0	0	0	0	1	0	0
HOUSEKEEPER	0	2	0	0	0	1	0	0	0	0	0	0	0	0	0	0	0	0	0	1	0	0	0	0	0	0
INVENTOR	1	0	0	0	0	0	0	0	1	0	0	0	0	0	0	0	0	0	0	0	0	0	0	0	0	0
INSULATOR MAKER	1	0	0	0	0	0	0	0	0	0	0	0	0	0	0	0	0	0	0	0	0	0	0	0	1	0
ICE-MAN	1	0	0	0	0	0	0	0	0	0	0	0	0	0	0	0	0	0	0	0	0	0	0	0	1	0
INSPECTOR	4	1	1	0	0	0	0	0	0	0	2	0	0	0	0	0	0	1	0	0	0	0	1	0	0	0
INFANT	15	10	0	0	0	0	0	1	0	2	1	1	4	1	1	1	1	2	4	1	1	0	2	0	1	1
IRON WORKER	2	0	0	0	0	0	0	0	0	0	1	0	0	0	0	0	0	0	0	1	0	0	0	0	0	0
JUNK DEALER	1	0	0	0	0	0	0	0	1	0	0	0	0	0	0	0	0	0	0	0	0	0	0	0	0	0
JANITOR	2	0	0	0	1	0	1	0	0	0	0	0	0	0	0	0	0	0	0	0	0	0	0	0	0	0



Continuation of Table No. 7

(E)

OCCUPATION	TOTAL		JAN.		FEB.		MAR.		APRIL		MAY		JUNE		JULY		AUG.		SEPT.		OCT.		NOV.		DEC.		
	M	F	M	F	M	F	M	F	M	F	M	F	M	F	M	F	M	F	M	F	M	F	M	F	M	F	
LINOTYPER	1	0	0	0	0	0	0	0	0	0	0	0	0	0	0	0	0	0	0	0	1	0	0	0	0	0	0
LABORER	104	0	4	0	6	0	2	0	6	0	11	0	9	0	10	0	6	0	18	0	9	0	18	0	5	0	
LANDSCAPER	3	0	1	0	0	0	0	0	0	0	0	0	0	0	0	0	0	0	0	0	0	0	1	0	1	0	
LITHOGRAPHER	1	0	0	0	0	0	1	0	0	0	0	0	0	0	0	0	0	0	0	0	0	0	0	0	0	0	
LINK CUTTER	1	0	0	0	0	0	0	0	0	0	0	0	0	0	0	0	0	0	1	0	0	0	0	0	0	0	
LATHE HAND	1	0	0	0	1	0	0	0	0	0	0	0	0	0	0	0	0	0	0	0	0	0	0	0	0	0	
MAILER	1	0	0	0	0	0	0	0	0	0	0	0	0	0	0	0	0	0	0	0	1	0	0	0	0	0	
MESSENGER BOY	1	0	0	0	0	0	0	0	0	0	0	0	0	0	0	0	0	0	0	0	0	0	0	0	1	0	
MOTOR MAN	1	0	0	0	0	0	0	0	0	0	0	0	0	0	0	0	0	0	0	0	0	0	0	0	1	0	
MILL WORKER	2	0	0	0	0	0	0	0	0	0	0	0	0	0	0	0	0	0	0	0	0	0	0	0	2	0	
MAINTENANCE MAN	1	0	0	0	0	0	0	0	0	0	0	0	0	0	0	0	0	0	0	0	0	0	0	0	1	0	
MACHINIST	19	0	4	0	0	0	2	0	0	0	1	0	2	0	1	0	3	0	3	0	1	0	2	0	0	0	
MARBLE SETTER	2	0	1	0	1	0	0	0	0	0	0	0	0	0	0	0	0	0	0	0	0	0	0	0	0	0	
MOLDER	8	0	2	0	2	0	0	0	0	0	2	0	1	0	0	0	1	0	0	0	0	0	0	0	0	0	
MAID	0	2	0	2	0	0	0	0	0	0	0	0	0	0	0	0	0	0	0	0	0	0	0	0	0	0	
MERCHANT	2	0	0	0	0	0	0	0	0	0	0	0	0	0	1	0	1	0	0	0	0	0	0	0	0	0	
MECHANIC	12	0	0	0	0	0	0	0	0	0	0	0	0	0	6	0	0	0	0	0	1	0	5	0	0	0	
METAL TESTER	1	0	0	0	0	0	0	0	0	0	0	0	0	0	0	0	0	0	1	0	0	0	0	0	0	0	



Continuation Of Table No. 7 (F)

OCCUPATION	TOTAL		JAN.		FEB.		MARCH		APRIL		MAY		JUNE		JULY		AUG.		SEPT.		OCT.		NOV.		DEC.	
	M.	F.	M	F	M	F	M	F	M	F	M	F	M	F	M	F	M	F	M	F	M	F	M	F	M	F
MANAGER	4	0	1	0	1	0	0	0	0	0	0	0	0	0	0	0	0	0	0	0	0	0	1	0	1	0
NEWS BOY	2	0	0	0	0	0	1	0	0	0	0	0	0	0	0	0	0	0	0	0	0	0	0	1	0	
NONE	21	8	0	0	0	0	0	1	3	0	2	0	1	0	0	0	0	1	3	0	3	0	9	3	0	3
NURSE	0	2	0	0	0	0	0	1	0	0	0	0	0	1	0	0	0	0	0	0	0	0	0	0	0	0
ORDERLY	2	0	0	0	0	0	0	0	0	0	0	0	0	0	1	0	0	0	0	0	0	0	0	0	1	0
PACKER	1	0	0	0	0	0	0	0	0	0	0	0	1	0	0	0	0	0	0	0	0	0	0	0	0	0
PAPERHANGER	2	0	0	0	0	0	0	0	0	0	0	0	1	0	0	0	0	0	0	0	0	0	0	0	1	0
PHOTOGRAPHER	1	0	0	0	0	0	0	0	0	0	0	0	0	0	0	0	0	0	0	0	1	0	0	0	0	0
PAINT MIXER	1	0	0	0	0	0	0	0	0	0	0	0	0	0	0	0	0	0	0	0	0	0	0	0	1	0
PIPE LINE WORKER	2	0	0	0	0	0	0	0	0	0	0	0	0	0	0	0	0	0	0	0	0	0	0	0	2	0
PAN HANDLER	1	0	1	0	0	0	0	0	0	0	0	0	0	0	0	0	0	0	0	0	0	0	0	0	0	0
PHARMACIST	1	0	1	0	0	0	0	0	0	0	0	0	0	0	0	0	0	0	0	0	0	0	0	0	0	0
PEDDLER	7	0	0	0	0	0	1	0	1	0	2	0	0	0	1	0	1	0	1	0	0	0	0	0	0	0
POLICEMAN	2	0	0	0	0	0	1	0	0	0	0	0	1	0	0	0	0	0	0	0	0	0	0	0	0	0
PRESIDENT	2	0	0	0	0	0	1	0	0	0	0	0	0	0	1	0	0	0	0	0	0	0	0	0	0	0
PAINTER	6	0	0	0	0	0	0	0	0	0	2	0	1	0	1	0	0	0	0	0	0	0	0	0	2	0
PLATER	1	0	0	0	0	0	0	0	0	0	1	0	0	0	0	0	0	0	0	0	0	0	0	0	0	0





Continuation of Table No. 7 (G)

OCCUPATION	TOTAL		JAN.		FEB.		MAR.		APRIL		MAY		JUNE		JULY		AUG.		SEPT.		OCT.		NOV.		DEC.		
	M	F	M	F	M	F	M	F	M	F	M	F	M	F	M	F	M	F	M	F	M	F	M	F	M	F	
PRINTER	4	0	0	0	0	0	0	0	0	0	0	0	0	0	1	0	0	0	0	0	0	0	0	0	0	3	0
PHYSICIAN	0	2	0	0	0	0	0	0	0	0	0	0	0	0	0	0	0	0	0	1	0	0	0	0	0	0	1
PROBATION OFFICER	1	0	0	0	0	0	0	0	0	0	0	0	0	0	0	0	0	0	1	0	0	0	0	0	0	0	0
PIN SETTER	1	0	0	0	1	0	0	0	0	0	0	0	0	0	0	0	0	0	0	0	0	0	0	0	0	0	0
PRIEST	1	0	0	0	1	0	0	0	0	0	0	0	0	0	0	0	0	0	0	0	0	0	0	0	0	0	0
POLISHER	1	0	0	0	1	0	0	0	0	0	0	0	0	0	0	0	0	0	0	0	0	0	0	0	0	0	0
ROLLER	1	0	0	0	1	0	0	0	0	0	0	0	0	0	0	0	0	0	0	0	0	0	0	0	0	0	0
RAILROADER	2	0	1	0	0	0	0	0	0	0	0	0	1	0	0	0	0	0	0	0	0	0	0	0	0	0	0
RESTAURANT WORKER	2	0	1	0	0	0	0	0	0	0	0	0	0	0	0	0	0	0	0	0	1	0	0	0	0	0	0
RETIRED	43	1	2	0	4	0	10	0	2	0	4	0	2	0	5	0	3	1	5	0	9	0	1	0	3	0	0
REAL ESTATE	5	0	0	0	1	0	0	0	1	0	1	0	0	0	0	0	0	0	0	0	0	0	0	0	0	2	0
REPAIRMAN	1	0	0	0	0	0	1	0	0	0	0	0	0	0	0	0	0	0	0	0	0	0	0	0	0	0	0
RESEARCH	0	1	0	0	0	0	0	1	0	0	0	0	0	0	0	0	0	0	0	0	0	0	0	0	0	0	0
SECRETARY	0	1	0	0	0	0	0	0	0	1	0	0	0	0	0	0	0	0	0	0	0	0	0	0	0	0	0
SHOE REPAIR	1	0	0	0	0	0	0	0	0	0	0	0	1	0	0	0	0	0	0	0	0	0	0	0	0	0	0
SAND BLASTER	1	0	0	0	0	0	0	0	0	0	0	0	1	0	0	0	0	0	0	0	0	0	0	0	0	0	0
SUPERINTENDENT	2	0	0	0	0	0	0	0	0	0	0	0	0	0	0	0	0	0	0	0	2	0	0	0	0	0	0



Continuation of Table No. 7 (H)

OCCUPATION	TOTAL		JAN.		FEB.		MAR.		APR.		MAY		JUNE		JULY		AUG.		SEPT.		OCT.		NOV.		DEC.	
	M	F	M	F	M	F	M	F	M	F	M	F	M	F	M	F	M	F	M	F	M	F	M	F	M	F
STENOGRAPHER	0	1	0	0	0	0	0	0	0	0	0	0	0	0	0	0	0	0	0	0	0	0	0	0	0	1
SPRAYER	0	1	0	0	0	0	0	0	0	0	0	0	0	0	0	0	0	1	0	0	0	0	0	0	0	0
SERVICE MAN	1	0	0	0	0	0	0	0	0	0	0	0	0	0	0	0	0	0	0	0	0	0	0	0	1	0
SWITCHMAN	1	0	0	0	0	0	0	0	0	0	0	0	0	0	0	0	0	0	0	0	0	0	0	0	1	0
SHIPPING CLERK	1	0	0	0	0	0	0	0	0	0	0	0	0	0	0	0	0	0	0	0	0	0	0	0	1	0
TIRE REPAIRMAN	1	0	0	0	0	0	0	0	0	0	0	0	0	0	0	0	0	0	0	0	0	0	0	0	1	0
SALESMAN	19	0	4	0	1	0	0	0	0	0	2	0	2	0	2	0	1	0	0	0	3	0	2	0	2	0
STUDENT	11	2	0	0	2	0	1	0	0	0	1	0	1	0	1	1	1	0	0	1	2	0	0	0	2	0
SCHOOL BOY	47	0	1	0	3	0	6	0	2	0	3	0	4	0	8	0	9	0	2	0	2	0	2	0	5	0
SHEET METAL WORKER	1	0	1	0	0	0	0	0	0	0	0	0	0	0	0	0	0	0	0	0	0	0	0	0	0	0
SCHOOL GIRL	0	16	0	2	0	1	0	0	0	2	0	0	0	0	2	0	2	0	1	0	2	0	0	0	0	4
SAILOR	2	0	0	0	0	0	1	0	0	0	0	0	0	0	0	0	0	0	0	1	0	0	0	0	0	0
STEEL WORKER	1	0	0	0	0	0	0	0	0	0	0	0	0	0	0	0	0	0	1	0	0	0	0	0	0	0
SURVEYOR	1	0	1	0	0	0	0	0	0	0	0	0	0	0	0	0	0	0	0	0	0	0	0	0	0	0
SALES MANAGER	1	0	0	0	0	0	0	0	1	0	0	0	0	0	0	0	0	0	0	0	0	0	0	0	0	0
TIRE DEALER	1	0	0	0	0	0	0	0	0	0	0	0	0	0	1	0	0	0	0	0	0	0	0	0	0	0
TIMEKEEPER	1	0	1	0	0	0	0	0	0	0	0	0	0	0	0	0	0	0	0	0	0	0	0	0	0	0
TAILOR	7	0	0	0	1	0	1	0	1	0	0	0	1	0	0	0	2	0	1	0	0	0	0	0	0	0



Continuation of Table No. 7 (1)

OCCUPATION	TOTAL		JAN.		FEB.		MAR.		APRIL		MAY		JUNE		JULY		AUG.		SEPT.		OCT.		NOV.		DEC.	
	M	F	M	F	M	F	M	F	M	F	M	F	M	F	M	F	M	F	M	F	M	F	M	F	M	F
TRUCKDRIVER	19	0	0	0	3	0	1	0	0	0	1	0	1	0	2	0	0	0	5	0	2	0	1	0	3	0
TESTER	1	0	0	0	0	0	0	0	0	0	1	0	0	0	0	0	0	0	0	0	0	0	0	0	0	0
TIME SETTER	1	0	0	0	1	0	0	0	0	0	0	0	0	0	0	0	0	0	0	0	0	0	0	0	0	0
TOOL MAKER	2	0	1	0	0	0	0	0	0	0	0	0	0	0	0	0	0	0	0	0	0	0	0	0	1	0
TREASURER	2	0	0	0	0	0	0	0	1	0	0	0	0	0	0	0	0	0	0	0	0	0	0	0	1	0
TEAMSTER	1	0	0	0	0	0	0	0	1	0	0	0	0	0	0	0	0	0	0	0	0	0	0	0	0	0
UNKNOWN	33	8	4	1	3	0	3	1	3	1	0	0	0	0	0	0	2	2	5	1	8	0	6	1	0	0
UPHOLSTERER	1	0	1	0	0	0	0	0	0	0	0	0	0	0	0	0	0	0	0	0	0	0	0	0	0	0
VICE PRESIDENT	2	0	0	0	0	0	0	0	0	0	0	0	0	0	1	0	1	0	0	0	0	0	0	0	0	0
WAITER	1	0	0	0	0	0	0	0	0	0	0	0	0	0	0	1	0	0	0	0	0	0	0	0	0	0
WIRE ROLLER	1	0	0	0	0	0	0	0	0	0	0	0	0	0	0	0	0	0	0	0	1	0	0	0	0	0
WAITRESS	0	3	0	0	0	0	0	0	0	0	0	0	0	0	0	0	0	0	0	0	2	0	0	0	0	1
WATCH MAKER	1	0	0	0	0	0	0	0	0	0	0	0	0	0	0	0	0	0	0	0	0	0	0	0	1	0
WATCHMAN	12	0	0	0	2	0	2	0	0	0	1	0	1	0	0	0	1	0	2	0	1	0	2	0	0	0
WINDOW WASHER	1	0	0	0	0	0	0	0	0	0	0	0	0	0	1	0	0	0	0	0	0	0	0	0	0	0
WELDER	5	0	0	0	1	0	1	0	0	0	0	0	0	0	0	0	1	0	1	0	2	0	0	0	0	0
TOTAL	625	181	47	19	48	10	44	8	39	14	47	8	48	14	56	15	46	21	65	17	65	20	62	16	58	19



VEHICLE FATALITIES SHOWING WHETHER ENGAGED  
IN NORMAL OCCUPATION AT TIME OF ACCIDENT.

Table No. 8

MONTH	TOTAL	ENGAGED IN OCCUPATION		NOT ENGAGED IN OCCUPATION	
		MALE	FEMALE	MALE	FEMALE
JANUARY	66	1	0	46	19
FEBRUARY	58	1	0	47	10
MARCH	52	1	0	43	8
APRIL	53	2	0	37	14
MAY	55	3	0	44	8
JUNE	62	5	0	43	14
JULY	71	4	0	52	15
AUGUST	67	1	0	45	21
SEPTEMBER	82	5	0	60	17
OCTOBER	85	4	0	61	20
NOVEMBER	78	6	0	56	16
DECEMBER	77	4	0	54	19
TOTAL	806	37	0	588	181





Table No. 9

## VEHICULAR FATALITIES BY MONTHS SHOWING WHAT DRIVERS WERE DOING

	TOTAL	JAN.	FEB.	MAR.	APR.	MAY	JUNE	JULY	AUG.	SEPT.	OCT.	NOV.	DEC.
MAKING RIGHT TURNS	7	2	1	0	2	1	0	1	0	0	0	0	0
MAKING LEFT TURNS	10	2	0	1	2	1	0	1	0	1	0	2	0
GOING STRAIGHT AHEAD	12	4	0	1	2	2	0	1	0	0	2	0	0
BACKING UP	1	0	0	0	0	0	0	0	0	0	1	0	0
PARKED	7	0	1	2	1	0	2	0	0	0	0	1	0
SPEEDING	63	5	2	3	6	4	5	7	6	8	10	3	4
DID NOT HAVE RIGHT OF WAY	50	3	2	3	0	2	5	8	3	7	5	6	6
CUTTING IN	5	1	1	0	0	0	1	0	0	0	0	0	2
WRONG SIDE OF ROAD	6	0	0	1	0	0	0	3	0	2	0	0	0
DROVE INTO SAFETY ZONE	25	1	1	3	2	1	0	2	0	1	3	4	7
STALLED ON RAILROAD TRACKS	1	0	0	0	0	0	0	0	0	0	0	0	1
AUTO RACES	3	0	0	0	0	0	0	2	0	1	0	0	0
DISREGARDED SIGNAL	25	5	1	0	0	2	2	0	2	2	3	2	6
OTHER IMPROPER DRIVING	35	2	1	0	4	4	1	2	3	3	5	1	6
NO IMPROPER DRIVING	29	0	0	1	1	3	6	3	3	5	3	4	0
NOT STATED	3	3	0	0	0	0	0	0	0	0	0	0	0
FELL ASLEEP	5	0	1	1	0	0	0	1	1	1	0	0	0
<i>TOTAL</i>	287	31	11	16	20	20	22	31	18	31	32	23	32



Table No. 10 (A)

## VEHICULAR FATALITIES BY MONTHS SHOWING WHAT PEDESTRIANS WERE DOING

	TOTAL	JAN.	FEB.	MAR.	APR.	MAY	JUNE	JULY	AUG.	SEPT.	OCT.	NOV.	DECEMBER
CROSSING INTERSECTION WITH SIGNAL	74	7	11	7	9	4	7	4	4	6	5	8	2
CROSSING AGAINST SIGNAL	111	6	10	5	8	8	6	4	12	10	16	12	14
CROSSING DIAGONALLY	18	0	0	2	1	2	0	1	0	4	2	6	0
CROSSING NOT AT INTERSECTION	174	10	15	14	5	13	14	13	12	17	17	23	21
PLAYING IN ROADWAY	16	0	2	2	1	1	1	5	1	3	0	0	0
WALKING IN ROADWAY	20	1	2	2	3	2	2	0	3	1	2	0	2
WORKING IN ROADWAY	5	0	1	0	0	0	0	1	1	0	1	1	0
WAITING IN SAFETY-ZONE FOR STREET CAR	6	2	2	0	0	0	0	0	0	1	1	0	0
GETTING ON OR OFF STREET CAR	6	1	0	1	0	0	0	0	0	0	2	1	1
GETTING ON OR OFF OTHER VEHICLES	9	1	0	2	0	1	1	2	0	0	2	0	0
WALKING BETWEEN PARKED AUTOS	21	3	1	0	2	0	1	2	5	3	1	2	1
STRUCK BY CAR BACKING UP	15	0	1	0	3	2	3	1	1	2	1	1	0
ON ROLLER SKATES	1	0	0	1	0	0	0	0	0	0	0	0	0
CRANKING TRUCK	1	0	0	0	0	0	0	0	0	0	0	0	1
FOUND ON STREET	7	2	0	0	1	1	0	1	1	0	0	0	1
STANDING IN STREET	5	2	0	0	0	0	0	0	1	0	1	0	1
RIDING BICYCLE	9	0	1	0	0	0	2	1	3	0	1	0	1
CHANGING TIRE	2	0	0	0	0	0	0	1	0	0	0	1	0
ON RAILROAD RIGHT OF WAY	8	0	0	0	0	0	1	4	1	1	1	0	0
WALKING ON SIDE WALK	6	0	0	0	0	0	0	0	4	2	0	0	0
IN PRIVATE DRIVE-WAY	2	0	1	0	0	0	0	0	0	1	0	0	0
MOWING LAWN	1	0	0	0	0	0	1	0	0	0	0	0	0
FELL IN STREET	1	0	0	0	0	0	1	0	0	0	0	0	0
PLAYING IN GAS STATION YARD	1	0	0	0	0	1	0	0	0	0	0	0	0
TOTAL	519	35	47	36	33	35	40	40	49	51	53	55	45



Table No. 11		VEHICLE FATALITIES BY MONTHS AND CONDITION OF DRIVER											
CONDITION	TOTAL	JAN.	FEB.	MAR.	APR.	MAY	JUNE	JULY	AUG.	SEPT.	OCT.	NOV.	DEC.
Under Influence Of Liquor	47	4	3	1	5	4	0	4	1	6	9	5	5
Physical Defect	3	0	0	0	0	0	0	1	1	0	1	0	0
Senility	1	0	0	0	0	0	1	0	0	0	0	0	0
No Defects	61	8	3	4	4	1	6	6	8	0	10	4	7
Not Stated	36	6	1	1	2	4	5	4	2	4	2	1	4
<b>TOTAL</b>	<b>148</b>	<b>18</b>	<b>7</b>	<b>6</b>	<b>11</b>	<b>9</b>	<b>12</b>	<b>15</b>	<b>12</b>	<b>10</b>	<b>22</b>	<b>10</b>	<b>16</b>

Table No. 12		VEHICLE FATALITIES BY MONTHS AND THE CONDITION OF PEDESTRIANS											
CONDITION	TOTAL	JAN.	FEB.	MAR.	APR.	MAY	JUNE	JULY	AUG.	SEPT.	OCT.	NOV.	DEC.
Under Influence Of Liquor	143	12	14	10	8	11	11	8	14	13	17	13	12
Physical Defect	8	0	1	1	2	1	0	0	2	0	1	0	0
Senility	51	2	6	11	5	3	2	3	3	6	2	5	3
Liquor & Physical Defect	3	3	0	0	0	0	0	0	0	0	0	0	0
Infant	14	0	0	1	2	1	3	0	3	2	1	1	0
Senile & Liquor	4	0	0	0	2	0	1	1	0	0	0	0	0
No Defect	243	18	26	13	12	13	21	24	23	26	21	26	20
Not Stated	53	0	0	0	2	6	2	4	4	4	11	10	10
<b>TOTAL</b>	<b>519</b>	<b>35</b>	<b>47</b>	<b>36</b>	<b>33</b>	<b>35</b>	<b>40</b>	<b>40</b>	<b>49</b>	<b>51</b>	<b>53</b>	<b>55</b>	<b>45</b>



Table No. 13

## VEHICLE FATALITIES BY MONTHS AND CONDITION OF PASSENGERS

CONDITION	TOTAL	JAN.	FEB.	MAR.	APR.	MAY	JUNE	JULY	AUG.	SEPT.	OCT.	NOV.	DEC.
UNDER INFLUENCE OF LIQUOR	32	1	1	1	5	4	2	5	0	7	3	1	2
PHYSICAL DEFECT	2	0	0	0	0	0	0	0	0	0	0	2	0
SENILITY	8	0	0	0	0	0	1	0	1	1	0	3	2
INFANT	1	0	0	0	0	0	0	0	0	0	0	0	1
NO DEFECT	71	12	3	9	3	4	6	11	5	8	3	3	4
NOT STATED	25	0	0	0	1	3	1	0	0	5	4	4	7
TOTAL	139	13	4	10	9	11	10	16	6	21	10	13	16

Table No. 14

## VEHICLE FATALITIES BY MONTHS SHOWING THE CONDITION OF THE ROAD

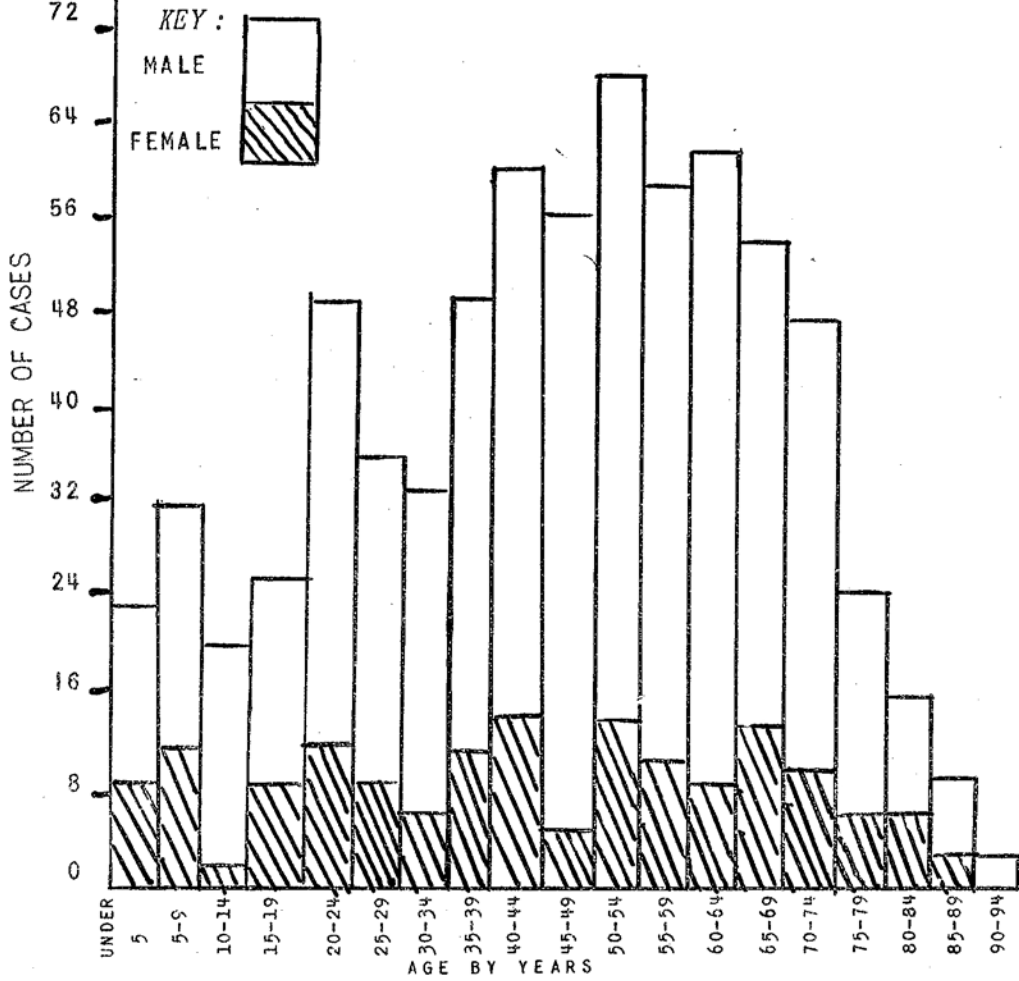
CONDITION	TOTAL	JAN.	FEB.	MAR.	APR.	MAY	JUNE	JULY	AUG.	SEPT.	OCT.	NOV.	DEC.
DRY	604	20	18	26	35	42	58	70	72	69	72	58	64
WET	114	9	8	15	19	9	3	0	0	11	12	16	12
SNOWY	43	25	8	8	0	0	0	0	0	0	0	0	2
ICY	37	16	21	0	0	0	0	0	0	0	0	0	0
MUDDY	9	1	0	7	1	0	0	0	0	0	0	0	0
PAVED	774	64	53	55	51	50	58	66	68	78	83	74	74
UNPAVED	6	2	0	0	0	0	1	1	0	1	0	0	1
GRAVEL	6	1	1	0	0	1	0	0	2	0	1	0	0
ROAD UNDER REPAIR	1	0	0	1	0	0	0	0	0	0	0	0	0
NOT STATED	19	3	2	0	4	0	1	3	2	1	0	0	3





CHART NO. 1

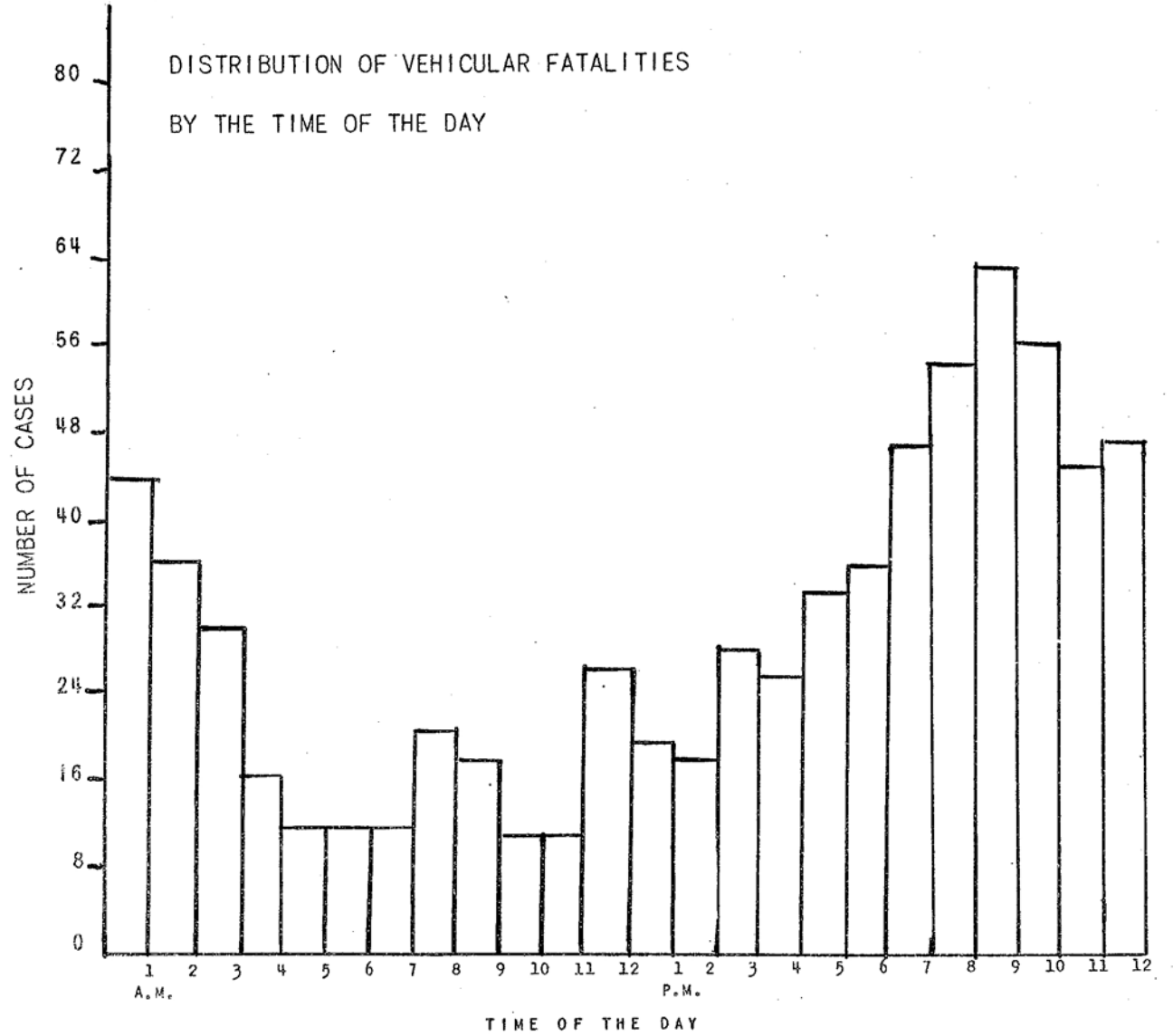
DISTRIBUTION OF VEHICULAR FATALITIES BY AGE AND SEX



REFER TO TABLE NO. 1

CHART NO. 2

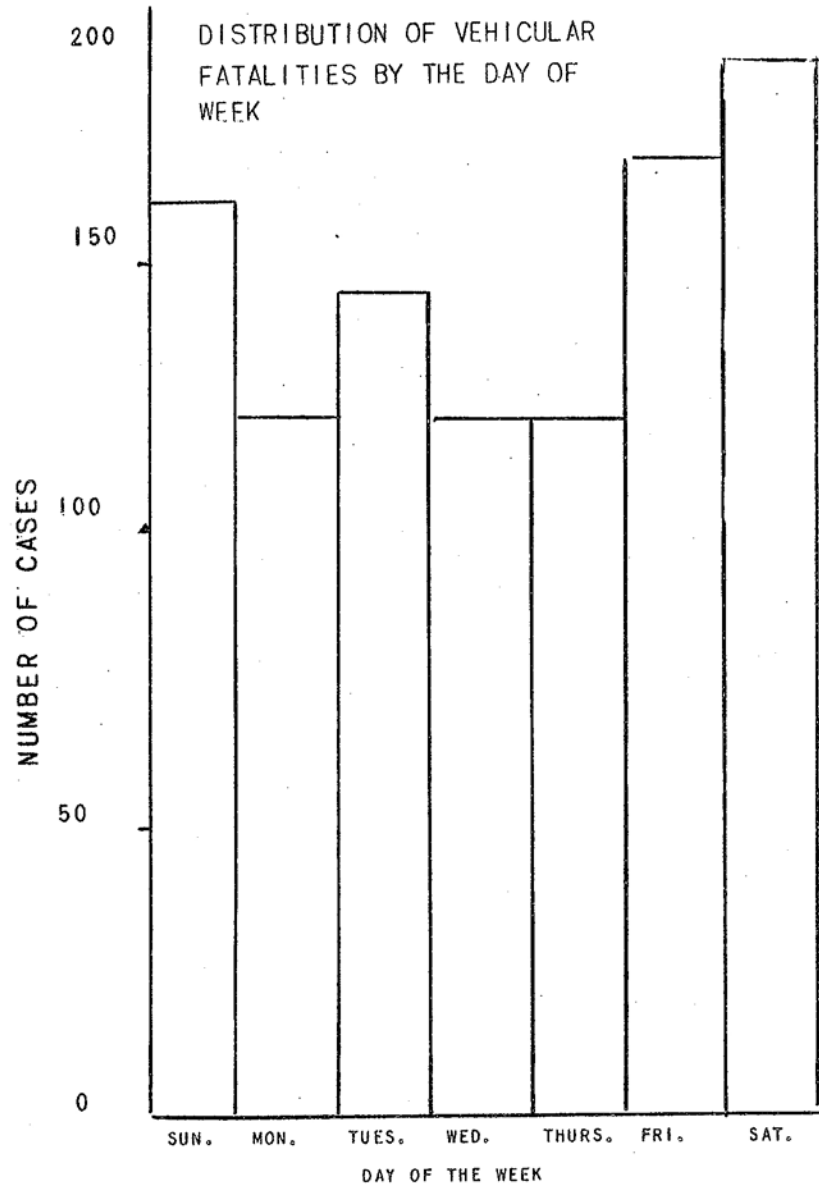
DISTRIBUTION OF VEHICULAR FATALITIES BY THE TIME OF THE DAY



REFER TO TABLE NO. 3



CHART NO. 3



REFER TO TABLE NO. 4

CHART NO. 4

