

CLEVELAND METROPARKS
LAKEFRONT RESERVATION

NORTHEAST OHIO REGIONAL SEWER DISTRICT

BEULAH PARK

VILLA BEACH

SHORE ACRES



SMITHGROUP

EUCLID BEACH
CONNECTOR TRAIL
JULY 18, 2025

EUCLID BEACH CONNECTOR TRAIL PROJECT LOCATION





CUYAHOGA COUNTY

PLAN SUMMARY

PROCESS AND RECOMMENDATIONS SUMMARY FOR
CUYAHOGA COUNTY LAKEFRONT PUBLIC ACCESS

SMITHGROUP

February 2022



SMITHGROUP

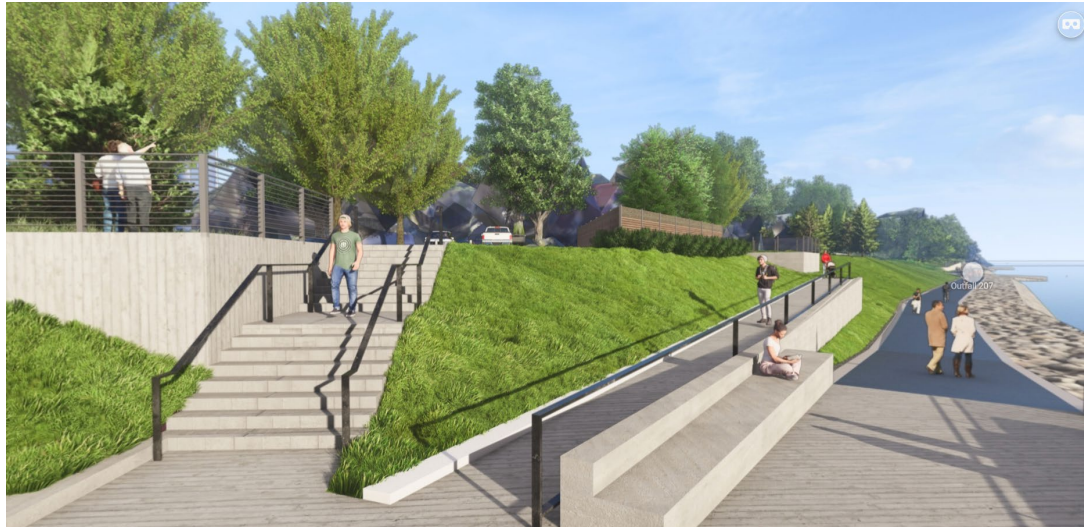
EUCLID BEACH CONNECTOR OVERVIEW

EAST END; CLEVELAND METROPARKS LAKEFRONT PARK CONNECTION



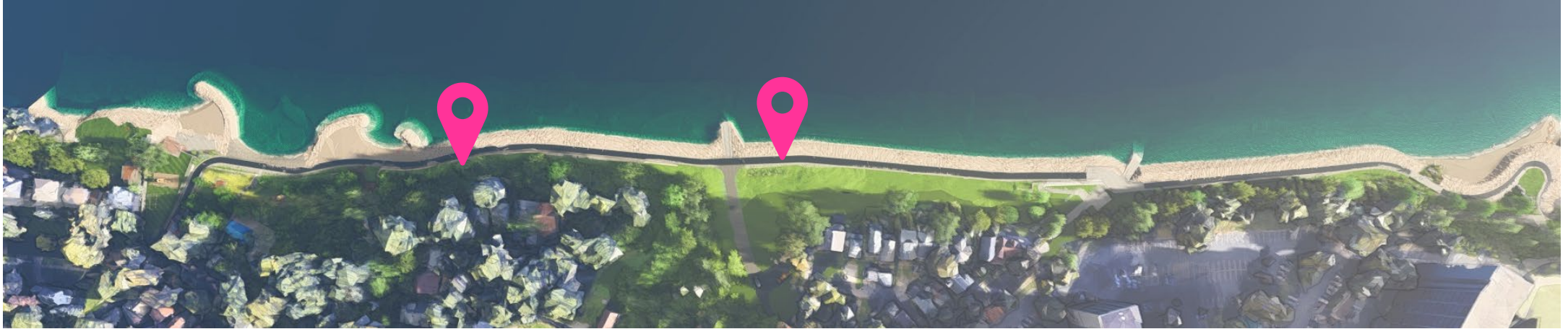
EUCLID BEACH CONNECTOR OVERVIEW

E. 156TH STREET; NEORSD & BEULAH PARK SECTION



EUCLID BEACH CONNECTOR OVERVIEW

VILLA BEACH AND BEULAH PARK SECTIONS



EUCLID BEACH CONNECTOR OVERVIEW

SHORE ACRES AND VILLA BEACH SECTIONS



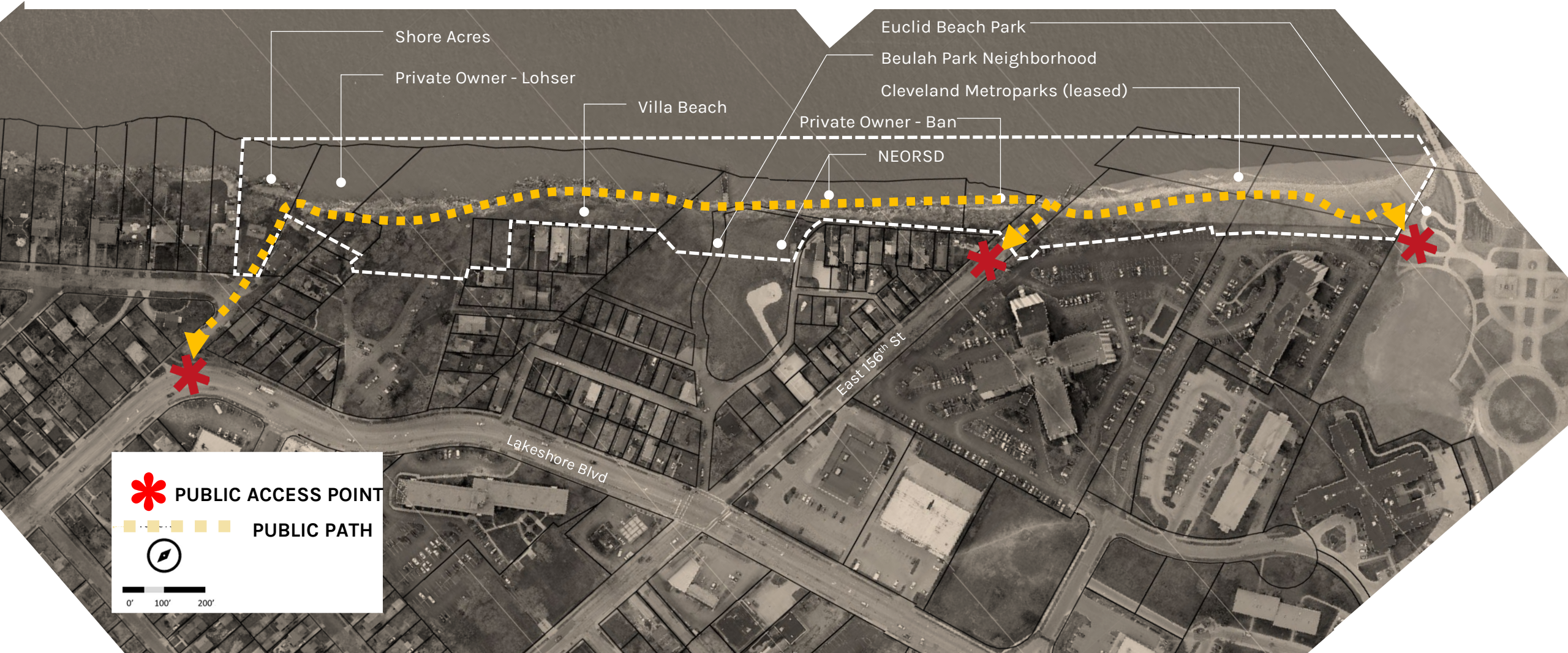
EUCLID BEACH CONNECTOR OVERVIEW

WEST END; SHORE ACRES SECTION



MAP OF PROPERTY OWNERS / EASEMENTS / ACCESS POINTS

WHERE ACCESS WILL OCCUR

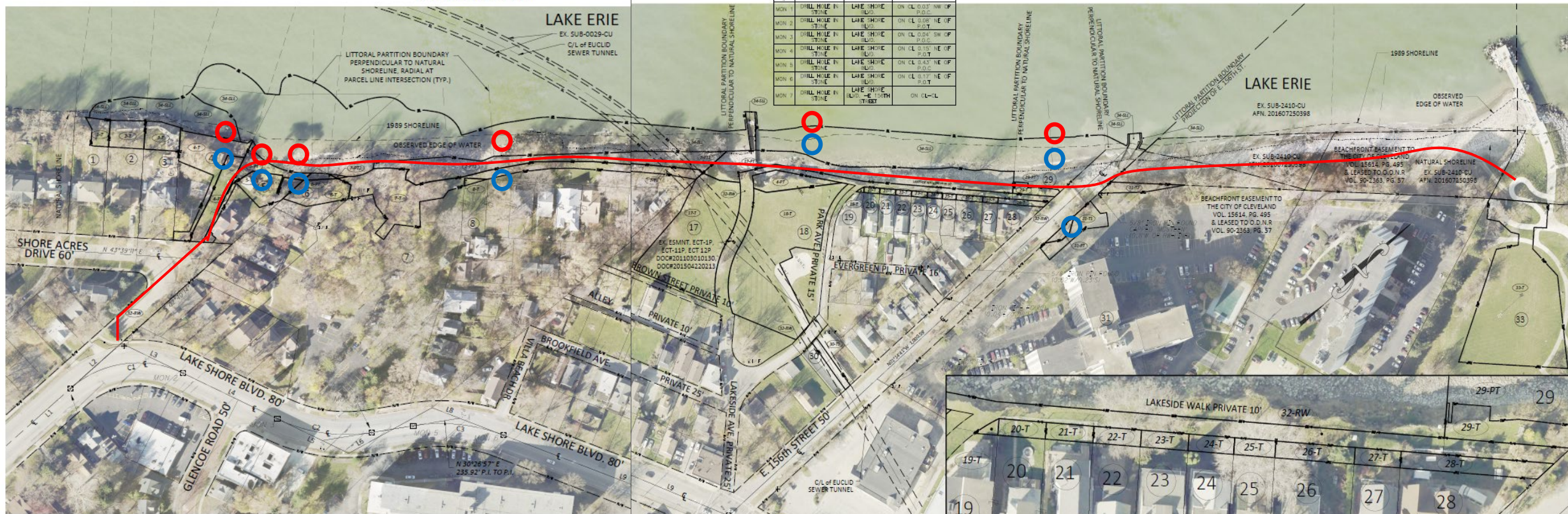




UPLAND & LITTORAL EASEMENTS

LITTORAL EASEMENTS (6)
PERMANENT EASEMENTS (7)

EUCLID BEACH CONNECTOR TRAIL
CUYAHOGA COUNTY
CITY OF CLEVELAND
TRACT 16
ORIGINAL EUCLID TOWNSHIP



EASEMENT TO ALLOW LIMITED PUBLIC ACCESS (10' TRAIL) ON PRIVATE PROPERTY



EASEMENT TYPE	LEGEND
T - TEMPORARY EASEMENT	R - PROPERTY LINE
PT - TRAIL EASEMENT	R/W - RIGHT OF WAY
RW - RIGHT OF WAY PERMIT	SL - SUBMERGED LAND LEASE
SL - SUBMERGED LAND LEASE	TMP - TEMPORARY EASEMENT
	SC - TRAIL EASEMENT

TIMELINE

