

LEGEND

- ① WHERE THERE ARE CONFLICTS SUCH AS UTILITIES, DRAINAGE STRUCTURES, INTERSECTIONS, EXCESSIVE BRIDGE SKEW, ETC., THIS DIMENSION MAY BE VARIED TO FIT THE SITUATION. UNLESS OTHERWISE SHOWN ON THE PLANS, REPLACE EXISTING PRESSURE RELIEF JOINTS WITH TYPE B JOINTS AT OR NEAR EXISTING LOCATIONS.
- ② STEEL TROWEL FINISH THE ENTIRE TOP OF SLEEPER SLAB.
- ③ CARE SHALL BE TAKEN TO ENSURE THE COMPACTED SUBBASE SURFACE IS FINISHED SMOOTH AND CONSTRUCTED AS HIGH AS OR SLIGHTLY HIGHER THAN THE TOP OF THE SLEEPER SLAB.
- ④ A BOND BREAKER CONSISTING OF TWO 5 FOOT (1.50m) WIDE SHEETS OF CLEAR OR OPAQUE POLYETHYLENE FILM (705.06) SHALL BE PLACED/CENTERED OVER THE TOP OF THE SLEEPER SLAB AND ALONG BOTH SIDES. THE FILM SHALL HAVE A NOMINAL THICKNESS OF FOUR (4) MILS (0.1mm) PER SHEET.
- ⑤ CONSTRUCTION JOINT USING DEFORMED BARS AT 12" (300mm) CENTERS, INSTALLED PER THE CUYAHOGA COUNTY ENGINEER'S CONSTRUCTION DRAWING BP-2.5C "SECTION-TYPE T". THE FULL DEPTH SAW CUT PERFORMED PER 255.03 MAY BE MADE IN TWO (2) PASSES. TO REDUCE THE POSSIBILITY OF SAW BINDING, JOINTS SHOULD BE CUT, IF POSSIBLE, ON OVERCAST DAYS AND/OR WHEN THE TEMPERATURE IS LESS THAN 70° F (21° C). OMIT CONSTRUCTION JOINT WHEN PLACED IN NEW ITEM 451, 452 OR 526 PAVEMENT.

NOTES

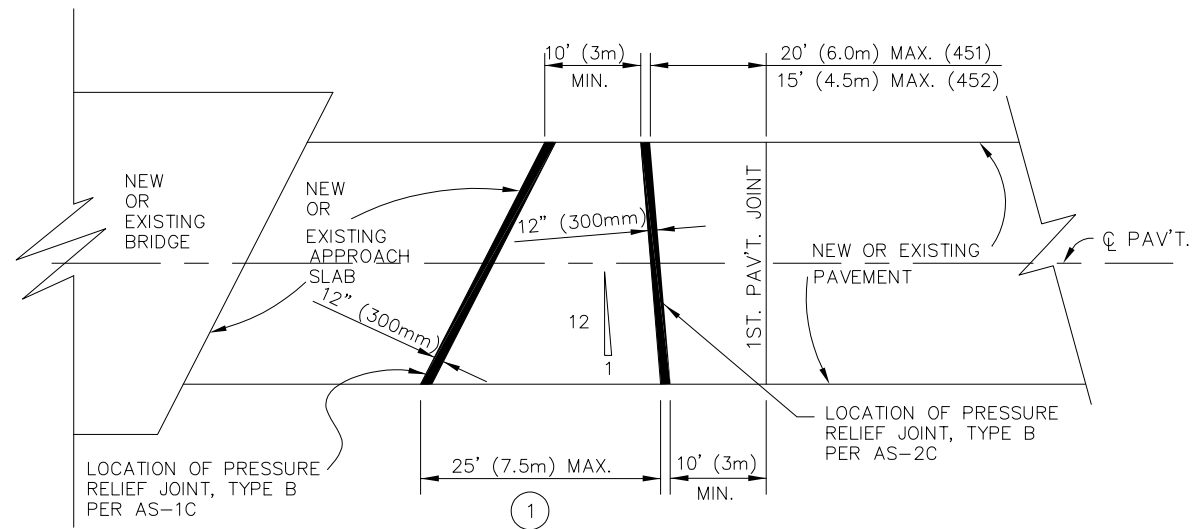
PRESSURE RELIEF JOINTS SHALL ONLY BE USED AT THE LOCATIONS REQUIRED AND SPECIFIED ON THE PLANS OR DESIGNATED BY THE ENGINEER. FOR PRESSURE RELIEF JOINTS LOCATED WITHIN RIGID PAVEMENT, THE SKEW OF THE PRESSURE RELIEF JOINT SHALL BE 12:1 OR GREATER UNLESS OTHERWISE DIRECTED BY THE ENGINEER. ON CURBED PAVEMENTS, THE PRESSURE RELIEF JOINT AND SLEEPER SLAB SHALL BE CONSTRUCTED THROUGH TO THE BACK OF CURB. AFTER FILLING THE JOINT, ASPHALT CONCRETE SHALL BE FORMED AND TAMPED IN PLACE TO CONFORM WITH THE ADJACENT CURB.

THE PRESSURE RELIEF JOINTS SHALL BE FILLED AND COMPACTED IN EQUAL LIFTS (3" MAX.) OF ITEM 441 ASPHALT CONCRETE INTERMEDIATE COURSE, TYPE 2 (448) WITH COMPACTION EQUIPMENT/METHODS AS APPROVED BY THE ENGINEER. COAT VERTICAL FACES OF ABUTTING PAVEMENT PER 401.14 PRIOR TO PLACING ASPHALT FILLER. *IN PAVEMENT THAT IS NOT TO BE RESURFACED, TYPE D JOINTS MAY BE FILLED WITH MATERIAL MANUFACTURED FOR PRESSURE RELIEF JOINTS (AS APPROVED BY THE ENGINEER AND IN ACCORDANCE WITH THE MANUFACTURER'S INSTRUCTIONS), SUCH AS W.R. MEADOWS SEALTIGHT CERAMAR PRESSURE RELIEF, OR FROTH PAK URETHANE FOAM, OR APPROVED EQUAL.

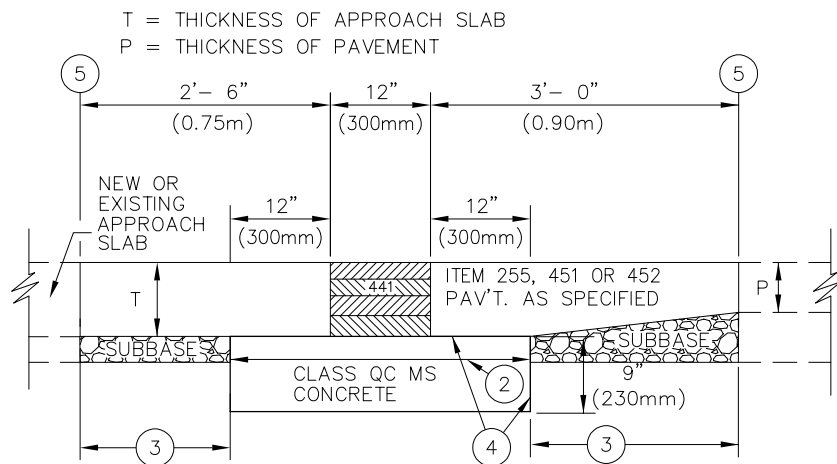
MEASUREMENT OF THE PRESSURE RELIEF JOINT FOR PAYMENT PURPOSES SHALL BE ALONG THE CENTERLINE OF THE JOINT, EDGE TO EDGE OF PAVEMENT, EDGE TO EDGE OF CONCRETE SHOULDERS OR BACK TO BACK OF CURBS. PAYMENT SHALL BE PER FOOT (METER) FOR "ITEM SPECIAL- PRESSURE RELIEF JOINT, CUYAHOGA COUNTY, TYPE ____," WHICH SHALL INCLUDE ALL WORK, MATERIALS AND INCIDENTALS NECESSARY TO ACCEPTABLY CONSTRUCT THE SLEEPER SLAB, FILL THE JOINT INCLUDING THE TAMPED/FORMED ASPHALT CURBS WHERE REQUIRED, AND INSTALL THE UPGRADE UNDERDRAIN AS SPECIFIED/DETAILED HEREIN; ALL TO THE SATISFACTION OF THE ENGINEER. THE SPECIFIED PAVEMENT AND SUBBASE PLACEMENTS/REPLACEMENTS SHALL BE PAID FOR SEPARATELY.

UNDERDRAIN: A PERFORATED PLASTIC PIPE UNDERDRAIN (707.41, 707.42 OR 707.45) SHALL BE PLACED ALONG THE UPGRADE SIDE OF THE SLEEPER SLAB. IT SHALL EXTEND FROM EDGE TO EDGE OF SLEEPER SLAB AND SHALL BE OUTLETTED TO A LONGITUDINAL UNDERDRAIN, CATCH BASIN OR THROUGH THE EMBANKMENT OR DITCH FORESLOPE. THE FLOW LINE SLOPE SHALL GENERALLY FOLLOW THE PAVEMENT SUBGRADE CROSS SLOPE (1% MIN.) EXCEPT AS REQUIRED TO OUTLET. INSTALLATION IS REQUIRED FOR ALL TYPE B AND TYPE D JOINTS. THESE DRAINS SHALL BE INCLUDED IN THE PER FOOT (METER) COST OF THE PRESSURE RELIEF JOINT.

THIS DRAWING IS USED IN CONJUNCTION WITH O.D.O.T. S.C.D. BP-1.1, BP-2.1, BP-2.2 AND THE CUYAHOGA COUNTY ENGINEER'S CONSTRUCTION DRAWING BP-2.5C. ALSO TO BE USED WITH CUYAHOGA COUNTY ENGINEER'S CONSTRUCTION DRAWING AS-1C OR AS-2C FOR PRESSURE RELIEF JOINTS AT BRIDGES.

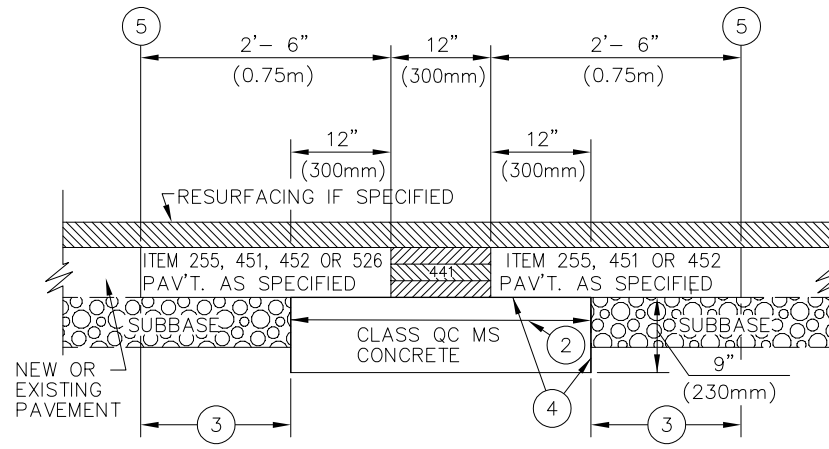


**PRESSURE RELIEF JOINT, TYPE B
LOCATION PLAN**



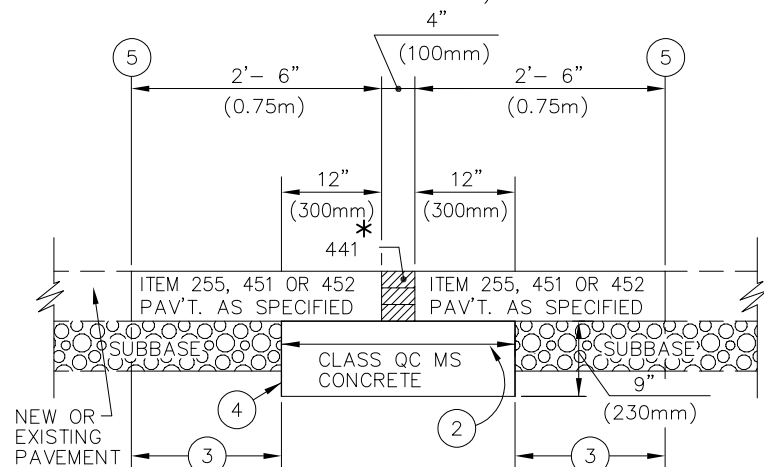
TYPE B (PER COUNTY STD. DWG. AS-1C)

(USED AT BRIDGES BETWEEN NEW APPROACH SLABS AND RIGID PAVEMENT)



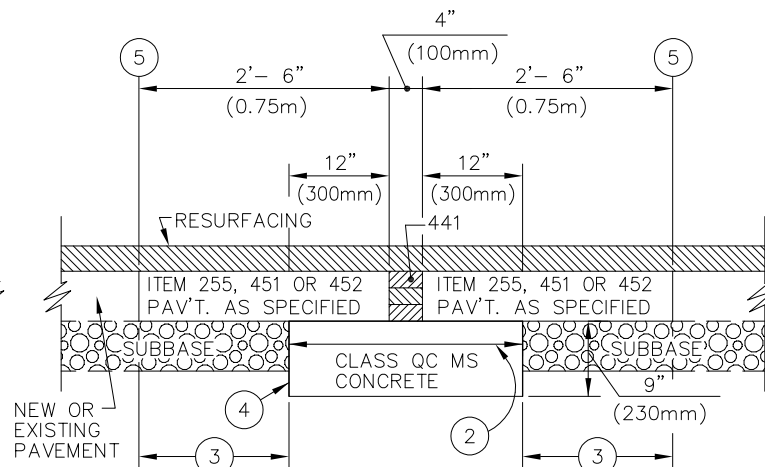
TYPE B-WITH RESURFACING (PER COUNTY STD. DWG. AS-2C)

(USED AT BRIDGES WITHIN RIGID PAVEMENT NEAR EXISTING APPROACH SLAB)



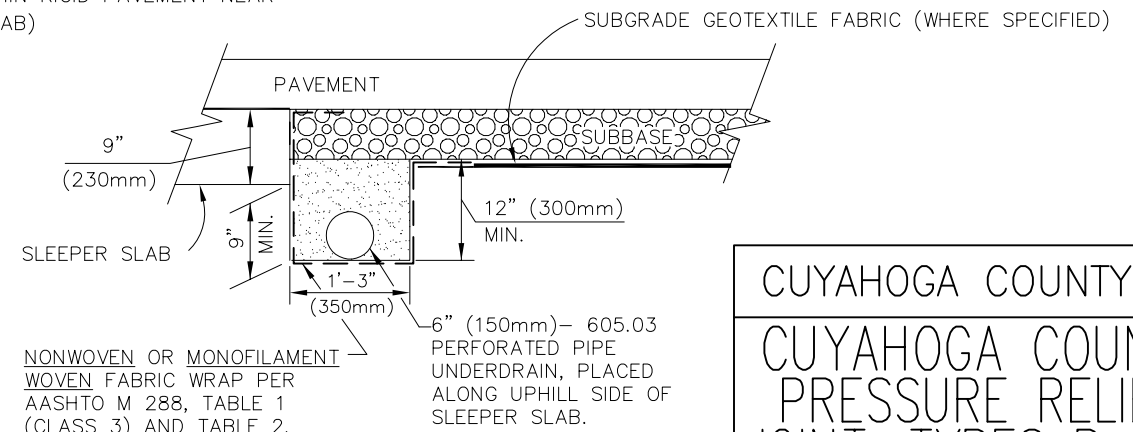
TYPE D

(USED FOR PAVEMENT ONLY)



TYPE D-WITH RESURFACING

(USED FOR PAVEMENT ONLY)



**UNDERDRAIN
PLACEMENT DETAIL**

NONWOVEN OR MONOFILAMENT WOVEN FABRIC WRAP PER AASHTO M 288, TABLE 1 (CLASS 3) AND TABLE 2.

6" (150mm) - 605.03 PERFORATED PIPE UNDERDRAIN, PLACED ALONG UPHILL SIDE OF SLEEPER SLAB.

CUYAHOGA COUNTY ENGINEER

CUYAHOGA COUNTY
PRESSURE RELIEF
JOINT, TYPES B & D

CONSTRUCTION
DRAWING BP-2.4C

DATE

- 05-05-97
- 12-07-99
- 08-15-00
- 10-29-01
- 02-10-03
- 05-07-07
- 10-10-08
- 10-31-13
- 10-08-15
- 11-15-17
- 03-01-21

