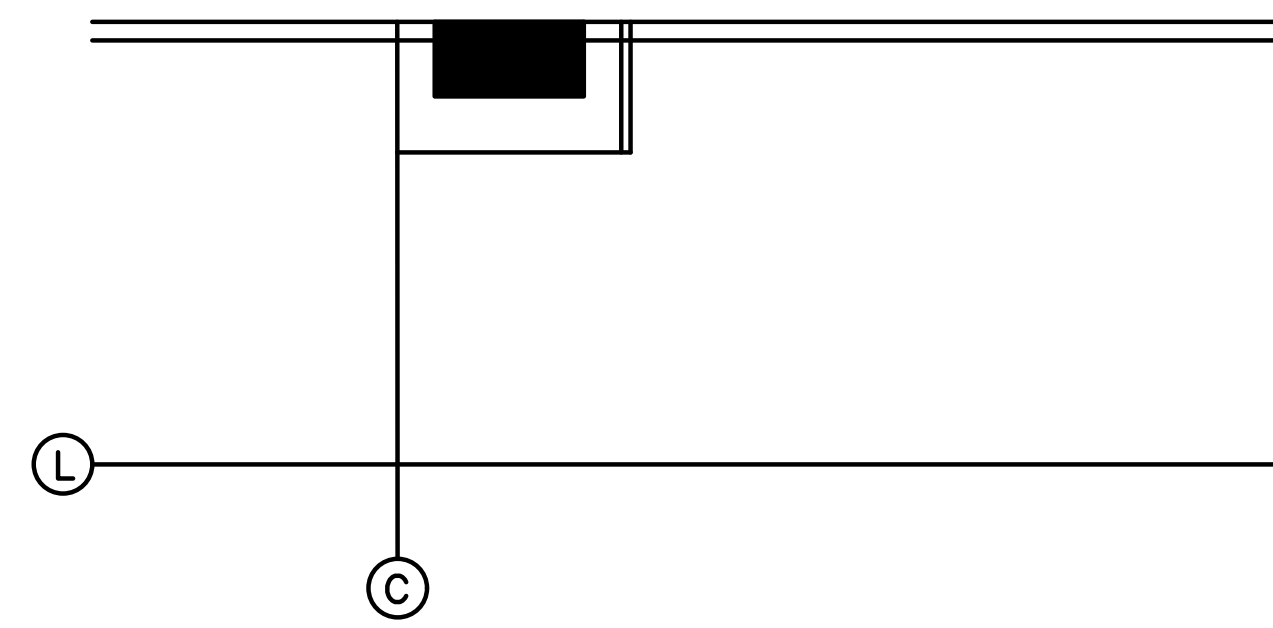


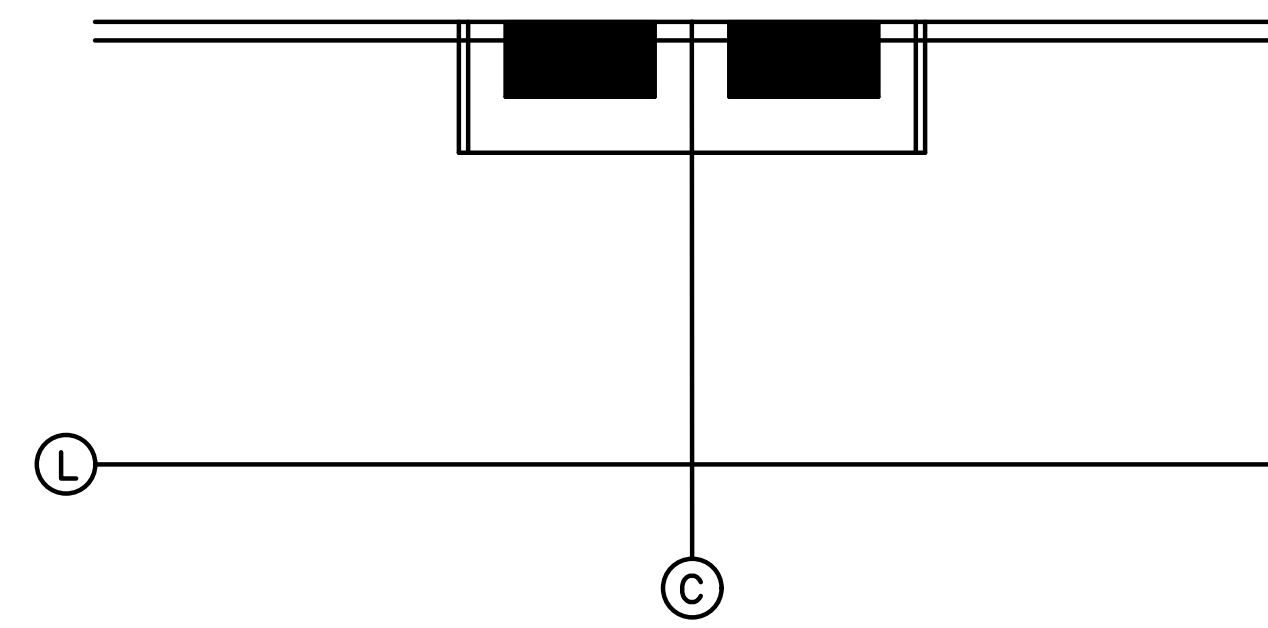
SINGLE BASINS – CUYAHOGA COUNTY No. 3C

TWIN BASINS – CUYAHOGA COUNTY TWIN 3C



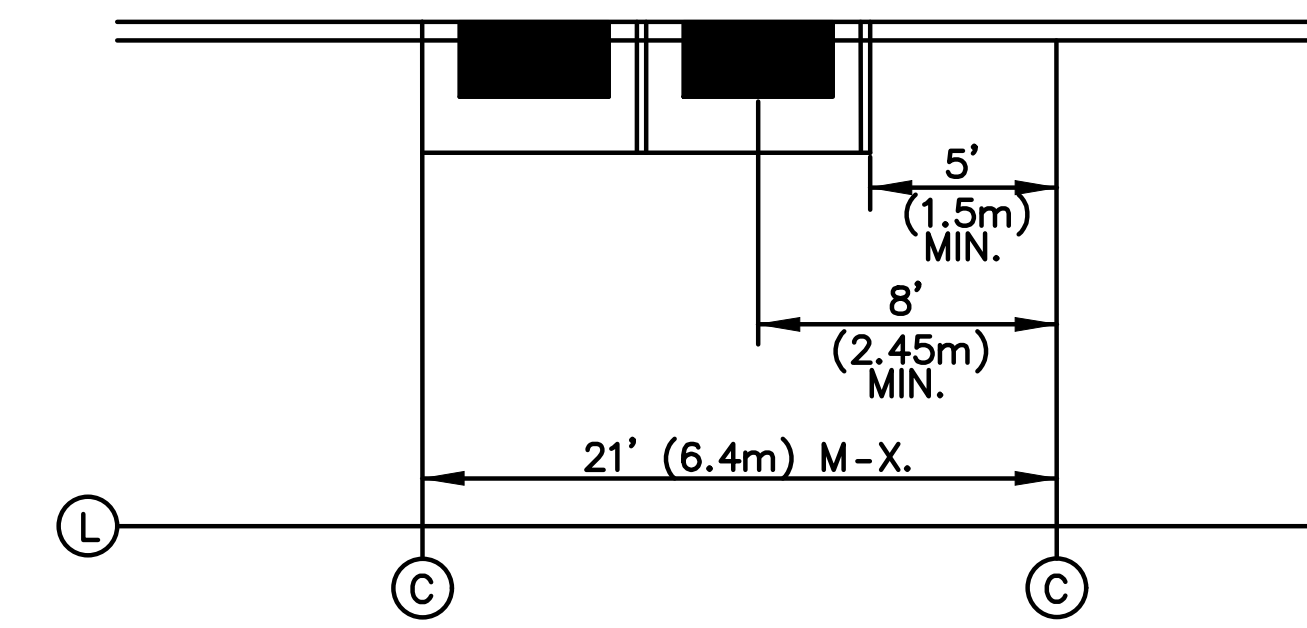
OPTION 1

LOC-TE CONTR-CTION JOINT TO -LIGN/-BUT EITHER SIDE OF TYPIC-L BLOCKOUT.



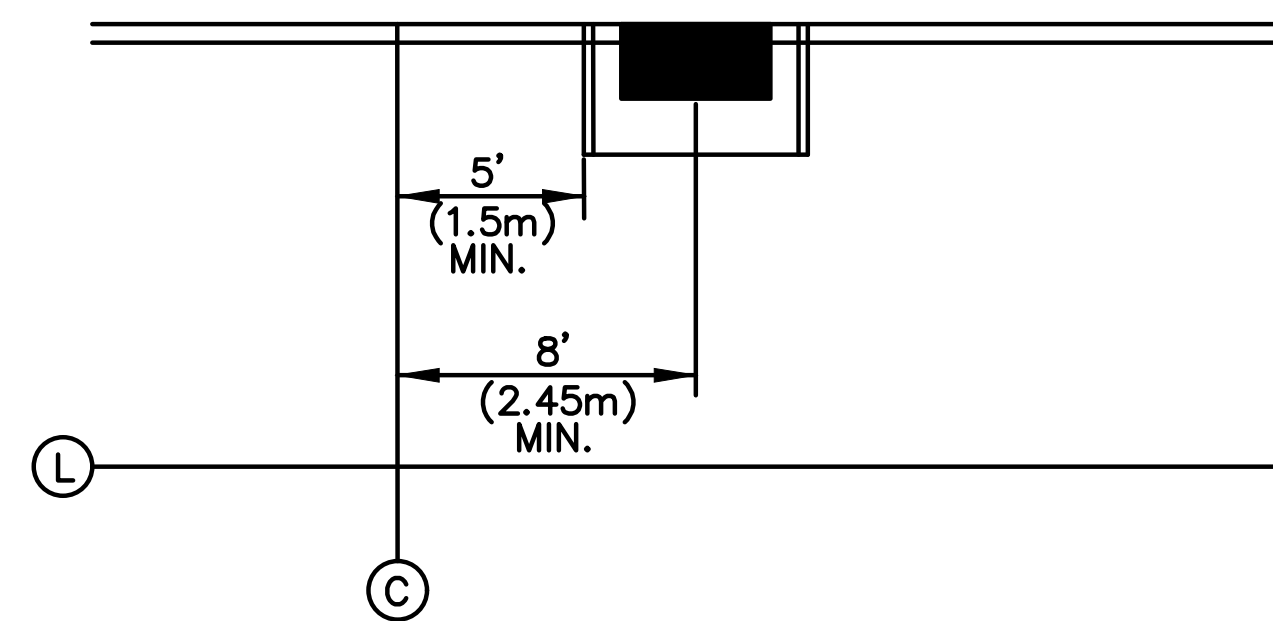
OPTION 1

LOC-TE CONTR-CTION JOINT -T THE MIDPOINT OF THE TWIN B-SIN BLOCKOUTS, PER CB-3C2.



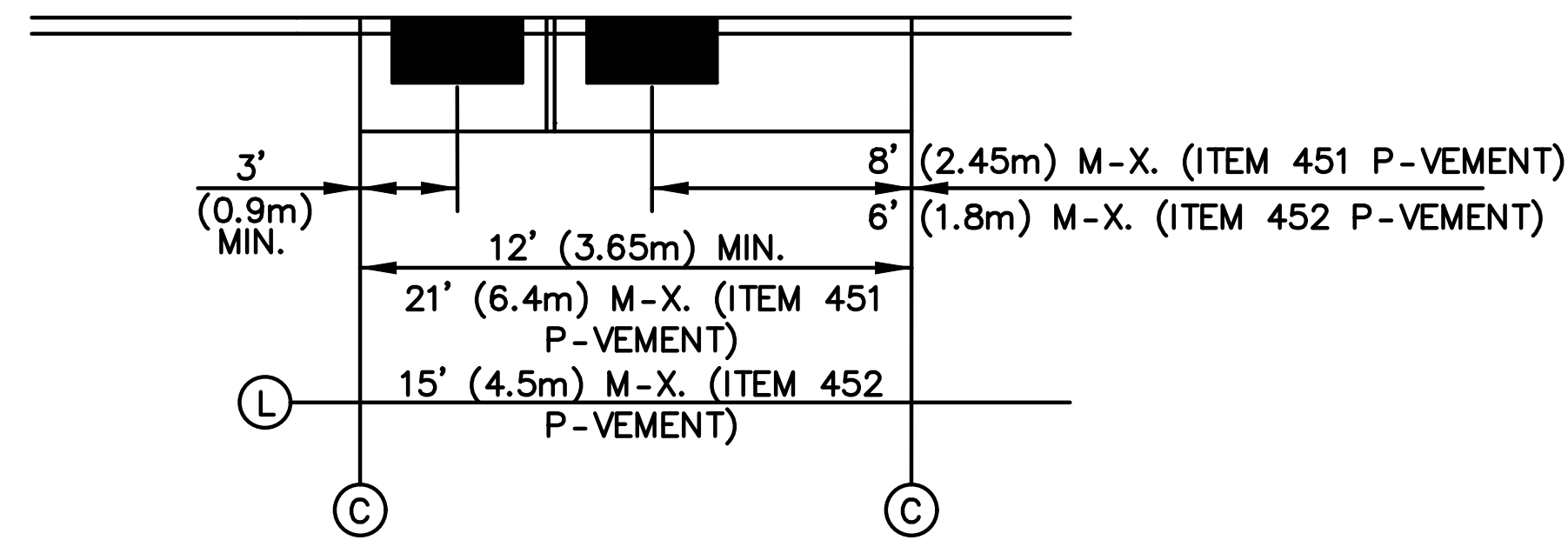
OPTION 2B
(FOR 451 PAVEMENT ONLY)

IF THE CONTR-CTION JOINT C-NNOT BE LOC-TED, PER OPTION 1, -LIGN/-BUT EITHER SIDE OF THE TYPIC-L TWIN B-SIN BLOCKOUT. -LSO NOTE, IF THE NEXT NE-REST CONTR-CTION JOINT IS LESS TH-N FIVE (5) FEET FROM THE TYPIC-L TWIN B-SIN BLOCKOUT, EXTEND THE BLOCKOUT TO THE CONTR-CTION JOINT PER OPTION 2--.



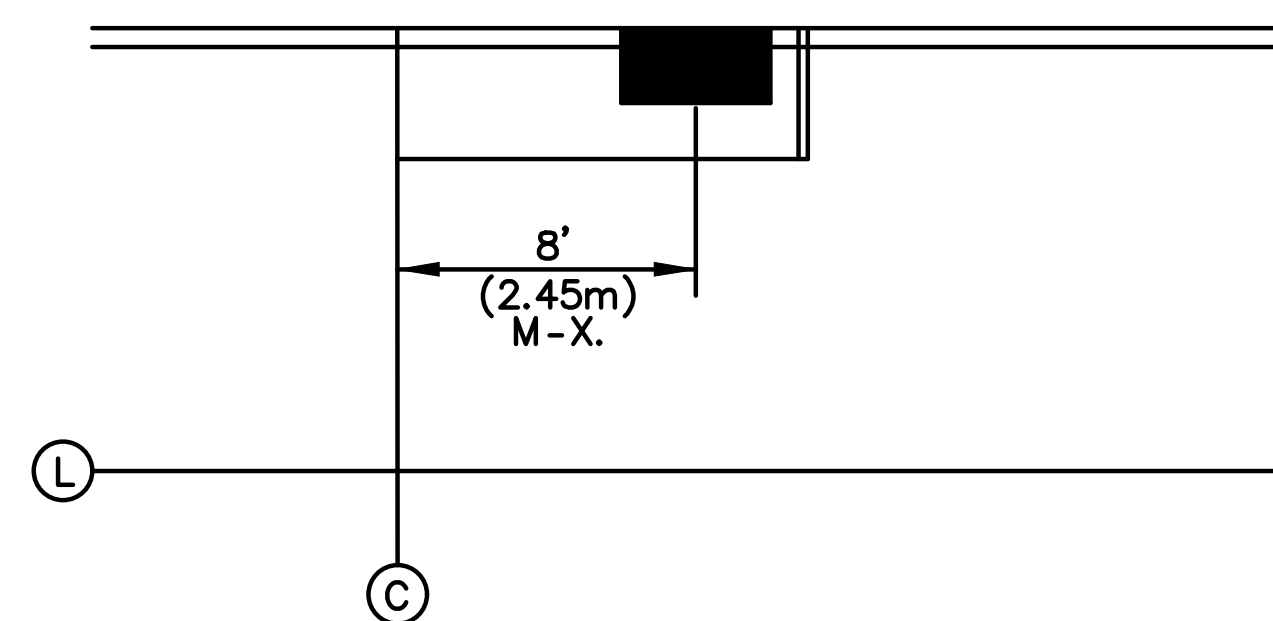
OPTION 2

IF PER OPTION 1, THE CONTR-CTION JOINT C-NNOT BE -LIGNED WITH TYPIC-L BLOCKOUT, LOC-TE JOINT - MINIMUM OF FIVE (5) FEET (1.5m) FROM BLOCKOUT.



OPTION 2A

IF THE CONTR-CTION JOINT C-NNOT BE LOC-TED PER OPTION 1, TRY TO LOC-TE - CONTR-CTION JOINT NO MORE TH-N EIGHT (8) FEET (2.45m) FOR 451 P-VEMENT -ND NO MORE TH-N SIX (6) FEET (1.8m) FOR 452 P-VEMENT EITHER SIDE OF THE CENTER OF C-STING LOC-TIONS -ND EXTEND THE BLOCKOUT BETWEEN THE CONTR-CTION JOINTS.



OPTION 3

IF PER OPTION 2, CONTR-CTION JOINT C-NNOT BE -LIGNED WITH TYPIC-L BLOCKOUT -ND IS CLOSER TH-N FIVE (5) FEET (1.5m) FROM TYPIC-L BLOCKOUT, EXTEND BLOCKOUT TO CONTR-CTION JOINT.

NOTES

- (1) FOR -DDITION-L SINGLE C-TCH B-SIN BLOCKOUT DET-ILS, SEE THE CUY-HOG- COUNTY ENGINEER'S CONSTRUCTION DR-WING CB-3C (ENGLISH OR METRIC VERSION).
- (2) FOR -DDITION-L TWIN C-TCH B-SIN BLOCKOUT DET-ILS, SEE THE CUY-HOG- COUNTY ENGINEER'S CONSTRUCTION DR-WING CB-3C2.
- (3) BLOCKOUT LOC-TIONS REL-TIVE TO PROPOSED EXP-NSION (E) JOINTS SH-LL BE THE S-ME -S THE CONTR-CTION JOINTS SHOWN HEREON.

- (C) CONTR-CTION JOINT, PER BP-2.2
- (E) EXP-NSION JOINT, PER BP-2.2
- (L) LONGITUDIN-L JOINT, PER BP-2.1

CUYAHOGA COUNTY ENGINEER

TYPICAL CATCH BASIN
CASTING PAVEMENT
BLOCKOUTS

DATE
12-07-99
08-15-00
10-10-08

CONSTRUCTION
DRAWING BP-2.8C

