

NOTES

CASTINGS SHALL MINIMALLY MEET THE REQUIREMENTS OF 611.02.G 711.12, A.S.T.M. A 48, AND MINIMALLY BE CLASS 35B GRAY IRON.

| | | | | |
|------------------|--------------------|---|-----|-----------|
| MINIMUM WEIGHTS: | 3C FRAME | = | 238 | LBS. ± 5% |
| | 3C GRATE | = | 135 | LBS. ± 5% |
| | 3C CURB INLET HOOD | = | 100 | LBS. ± 5% |

SUBJECT TO THE ABOVE, THE FOLLOWING OR APPROVED EQUAL CASTINGS ARE ACCEPTED:

NEENAH No. R-3246-CL WITH TYPE L GRATE OR EAST JORDAN No. 7035Z3 FRAME WITH TYPE 7030M6 GRATE AND TYPE 7030T6 CURB INLET HOOD.

THE FOLLOWING TEXT SHALL BE CAST INTO THE TOP OF THE CURB CASTING: "DUMP NO WASTE" AND "DRAINS TO WATERWAY"

TEXT SHALL BE PRINTED IN BOLD, CAPITAL LETTERS WITH A MINIMUM HEIGHT OF 3/4". "WATERWAY" MAY BE SUBSTITUTED WITH "STREAM", "RIVER", "LAKE", ETC. ACTUAL PLACEMENT AND LOGO MAY VARY PER MANUFACTURER.

BEARING AREAS OF FRAME AND GRATE SHALL BE SO FITTED AND FINISHED AS TO PROVIDE A FIRM AND EVEN SEAT. NO PROJECTIONS SHALL EXIST ON BEARING AREAS AND THE GRATE SHALL SEAT IN ITS FRAME WITHOUT ROCKING. EACH FRAME AND GRATE SHALL BE FITTED, MATCHED AND MARKED BEFORE DELIVERY TO THE PROJECT.

DOWELS: FOUR (4) 1-1/2" x 18" DOWELS ARE REQUIRED FOR CONCRETE PAVEMENT OR GUTTER BLOCKOUT. SEE BP-2.2 FOR DOWEL DETAILS.

BRICK, CONCRETE BLOCK OR CAST-IN-PLACE CONCRETE SIDE WALLS, WHEN USED IN LIEU OF PRECAST CONCRETE, SHALL BE EIGHT (8) INCHES NOMINAL THICKNESS.

PRECAST CONSTRUCTION IS PERMITTED (EXCEPT FOR THE BLOCKOUT PAVEMENT) AND CONCRETE SHALL MEET THE REQUIREMENTS OF 706.13. PRECAST WALLS SHALL HAVE A MINIMUM THICKNESS OF SIX (6) INCHES AND REINFORCING SHALL BE SUFFICIENT TO PERMIT SHIPPING AND PLACEMENT WITHOUT DAMAGE. THE WALL THICKNESS REDUCTION SHALL BE FROM THE OUTSIDE.

OPENINGS: THE MAXIMUM PIPE OPENING SHALL BE THE O.D. OF THE PIPE BEING CONNECTED PLUS TWO (2) INCHES WHEN FABRICATED OR FIELD CUT. FILL ANY VOIDS WITH MORTAR PER 611.10.B.

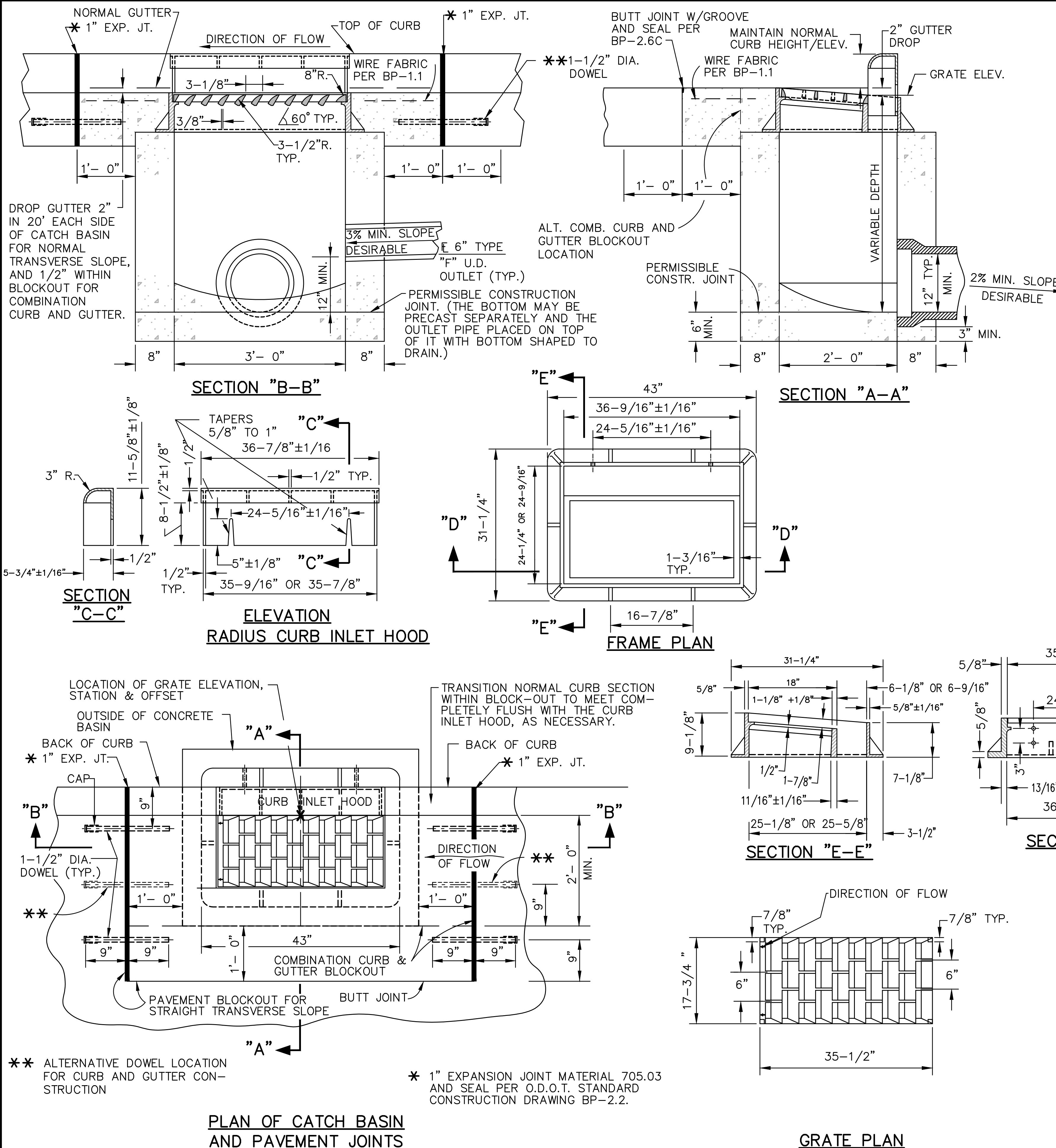
BLOCKOUT: WHERE EITHER SIDE OF THE CATCH BASIN BLOCKOUT IS ALIGNED WITH A CONTRACTION JOINT (AS IS TYPICALLY DESIRABLE), THE CONTRACTION JOINT SHALL BE CONTINUED, IN KIND, WITHIN THE LIMITS OF THE BLOCKOUT. EXCEPT AS SPECIFIED ABOVE, BLOCKOUTS SHALL BE LOCATED NO CLOSER THAN FIVE (5) FEET FROM THE NEAREST PAVEMENT JOINT. SEE THE CUYAHOGA COUNTY ENGINEER'S CONSTRUCTION DRAWING BP-2.8C FOR ADDITIONAL BLOCKOUT DETAILS.

WHERE THE SPECIFIED CATCH BASIN WORK REQUIRES THE CONSTRUCTION/RECONSTRUCTION OF BLOCKOUTS IN EXISTING PAVEMENT, THE BLOCKOUTS SHALL CONFORM, AS CLOSELY AS POSSIBLE, TO THE DETAILS SHOWN HEREON EXCEPT THAT THE DOWELS SHALL BE PLACED/REPLACED IN ACCORDANCE WITH THE "SECTION-TYPE X" JOINT, PER CUYAHOGA COUNTY CONSTRUCTION DRAWING BP-2.5C ("SECTION-TYPE Y" JOINT WHERE BLOCKOUT JOINT IS AT AN EXISTING CONTRACTION OR HINGE JOINT LOCATION). PAYMENT SHALL BE INCLUDED IN THE ITEM 611-CATCH BASIN, CUYAHOGA COUNTY NO. 3C WORK SPECIFIED; AND/OR AS DIRECTED BY THE ENGINEER.

A CLASS "QC MS" CONCRETE APRON, THE SIZE OF THE TWO (2) FOOT MINIMUM GUTTER BLOCKOUT, SHALL BE CAST IN PLACE (SET FLUSH WITH THE INTERMEDIATE COURSE) IN FULL DEPTH/WIDTH FLEXIBLE PAVEMENT (NO DOWELS REQUIRED) WITH THE COST INCLUDED IN THE CATCH BASIN BID PRICE.

ANY/ALL EXTRA MATERIAL, LABOR AND EQUIPMENT REQUIRED TO CONSTRUCT THE PAVEMENT, CURB, SUBBASE, SUBGRADE AND BACKFILL WITHIN THE BLOCKOUT AREAS, IN ACCORDANCE WITH THE APPLICABLE PROVISIONS OF THE CONSTRUCTION AND MATERIAL SPECIFICATIONS, SHALL BE INCLUDED IN THE UNIT PRICE BID, PER EACH, FOR THE "ITEM 611-CATCH BASIN, CUYAHOGA COUNTY NO. 3C, AS PER PLAN" WORK SPECIFIED.

THIS CATCH BASIN IS NOT INTENDED FOR USE WITH MOUNTABLE TYPE CURBS NOR SHOULD IT BE LOCATED WITHIN A DRIVE APRON. (SEE O.D.O.T. STANDARD CONSTRUCTION DRAWING CB- 2.3).



| | |
|--------------------------|--|
| CUYAHOGA COUNTY ENGINEER | |
| CATCH BASIN | DATE |
| | 05-05-97 12-07-99 08-15-00 10-29-01 03-01-05 08-28-07 10-10-08 06-16-11 10-31-13 11-15-17 |
| CONSTRUCTION DRAWING | CB-3C |

