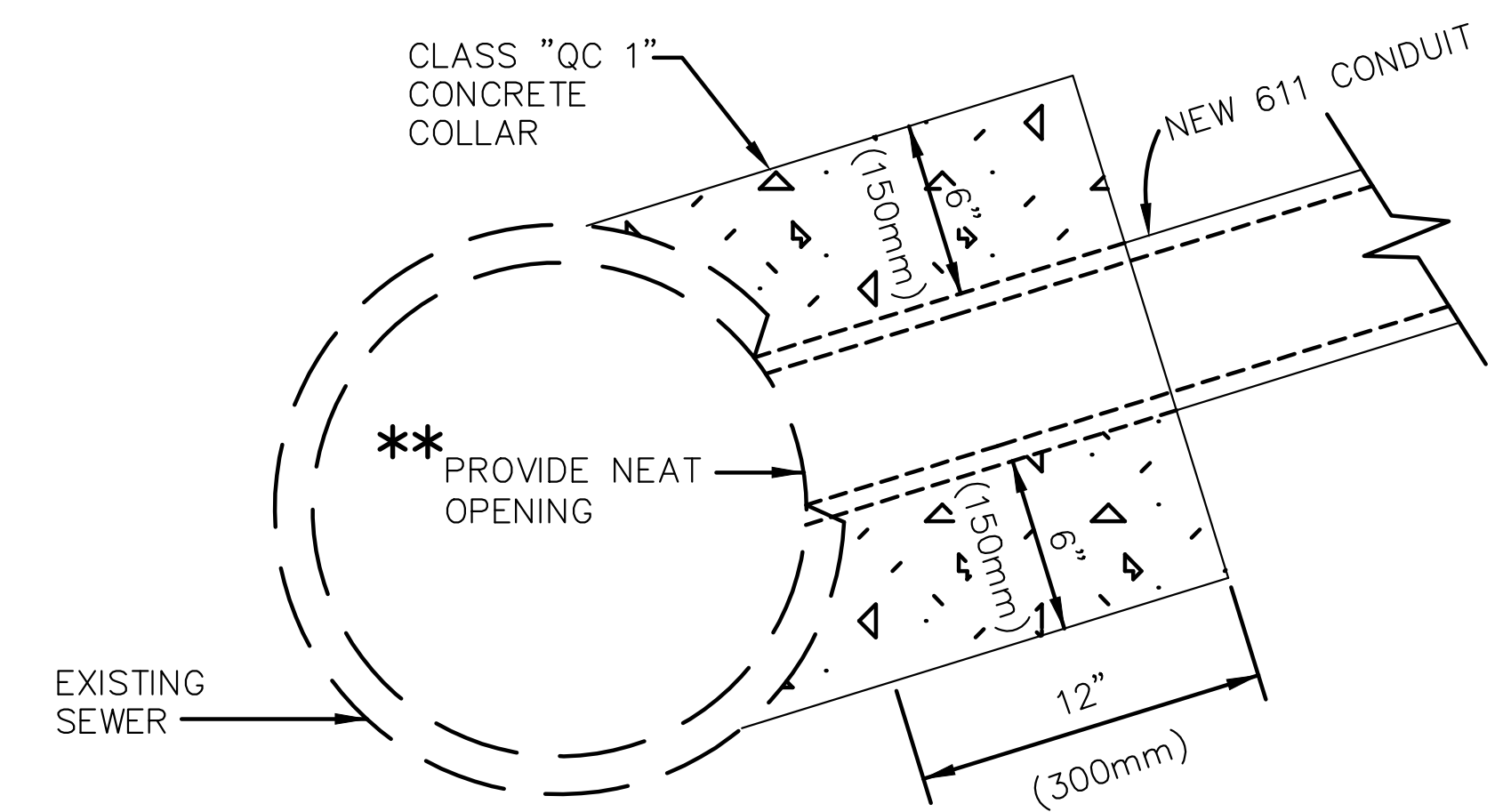


* = 12 : 1 SLOPE
 A = 2'- 0" (0.6m) MINIMUM, 4'- 0" (1.2m) DESIRABLE
 B = 6 (TYPICAL), 4 (MAXIMUM)

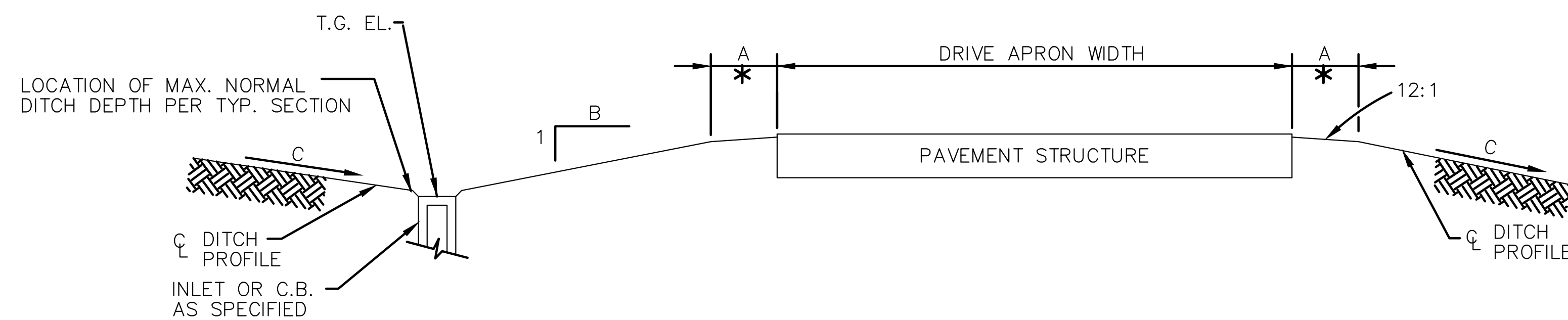
TYPICAL DRIVE PIPE INSTALLATION

NOT TO SCALE



TYPICAL DETAIL OF CONCRETE COLLAR

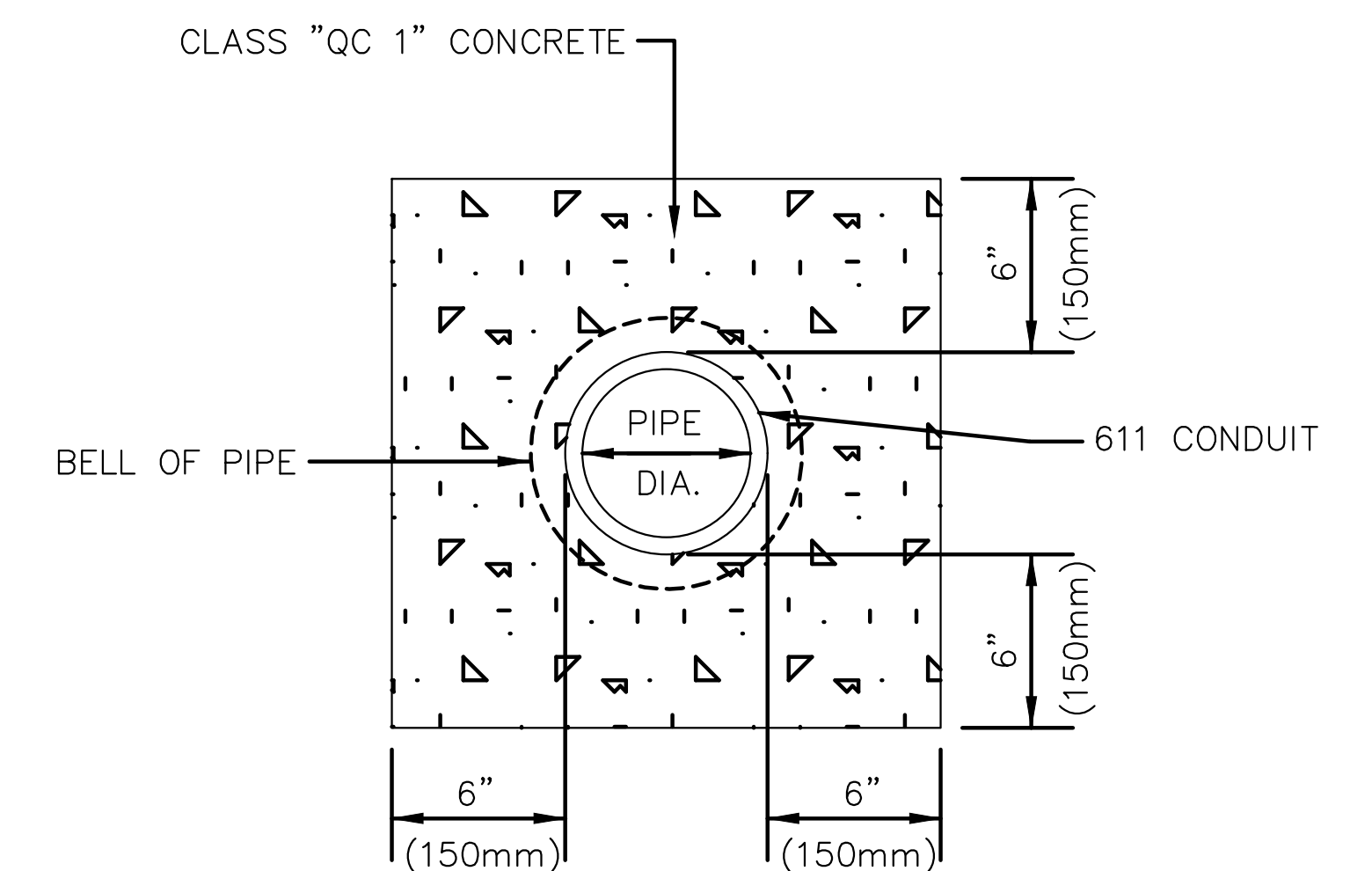
NOT TO SCALE



* = 12 : 1 SLOPE
 A = 2'- 0" (0.6m) MINIMUM, 4'- 0" (1.2m) DESIRABLE
 B = 6 (TYPICAL), 4 (MAXIMUM)
 C = UNIFORM SLOPE TO MAXIMUM ROADSIDE DITCH DEPTH AT NEXT DOWNSTREAM DITCH INLET OR DRIVE PIPE, UNLESS OTHERWISE SHOWN ON THE PLANS. (SEE TYPICAL SECTION)

TYPICAL DITCH INLET INSTALLATION AT DRIVE

NOT TO SCALE



DETAIL OF CONCRETE ENCASEMENT

ENCASEMENT

(LENGTH OF ENCASEMENT AS REQUIRED AND/OR SPECIFIED IN THE PLANS.)
 NOT TO SCALE

NOTES:

** NEITHER THE CONNECTING SEWER NOR THE CONCRETE COLLAR SHALL EXTEND INTO THE HIGHWAY SEWER.

BACKFILL AROUND COLLAR AFTER CONCRETE HAS ATTAINED SUFFICIENT STRENGTH.

FOR CONNECTIONS TO NEW SEWERS, APPROPRIATE SIZED "TEE" CONNECTIONS OR NEATLY CORED AND COLLARED CONNECTIONS MAY BE USED. HOWEVER, EXCEPT FOR LATERAL SERVICE CONNECTIONS, CORED AND COLLARED CONSTRUCTION WILL NOT BE PERMITTED ON NEW SEWER CONNECTIONS WHERE THE RATIO OF THE CONNECTING PIPE SIZE TO THE MAIN LINE PIPE SIZE IS MORE THAN 2:5.

THE COST OF TAPPING (CORING) THE MAIN-LINE HIGHWAY SEWER, INCLUDING THE CONCRETE COLLAR OR TEE CONNECTION SHALL BE PAID FOR AT THE CONTRACT UNIT PRICE BID PER FOOT FOR THE PERTINENT 611 ITEMS INVOLVED.

CUYAHOGA COUNTY ENGINEER

MISCELLANEOUS
 DRAINAGE DETAILS
 DRIVE PIPE, DITCH INLETS
 AND COLLARS

DATE
 12-07-99
 10-31-13
 11-15-17

CONSTRUCTION DRAWING MD-5C

