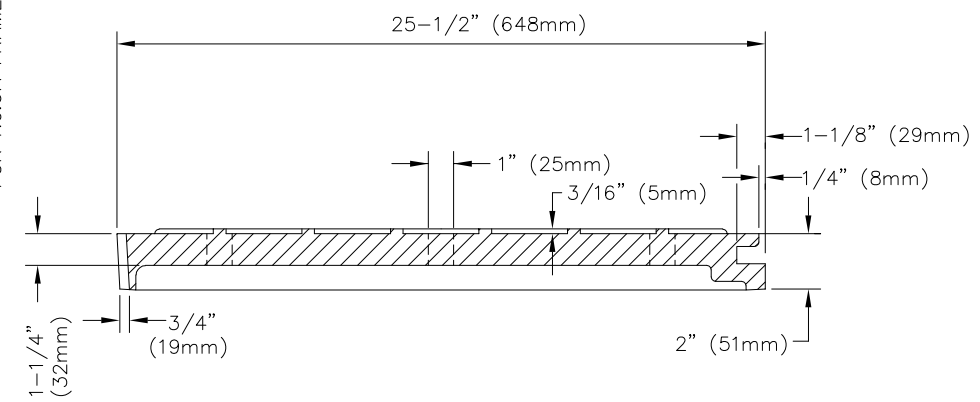
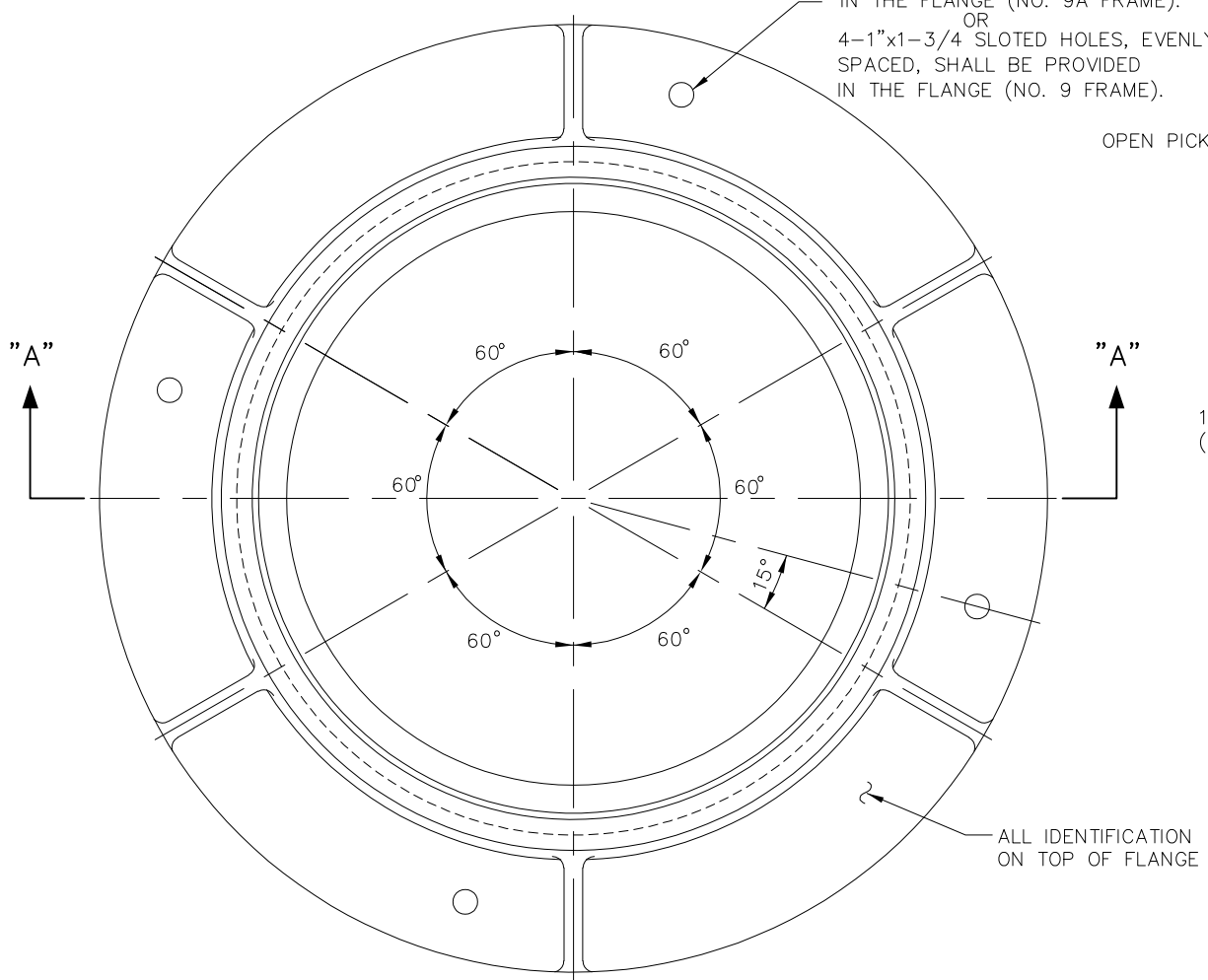


SECTION "A-A"

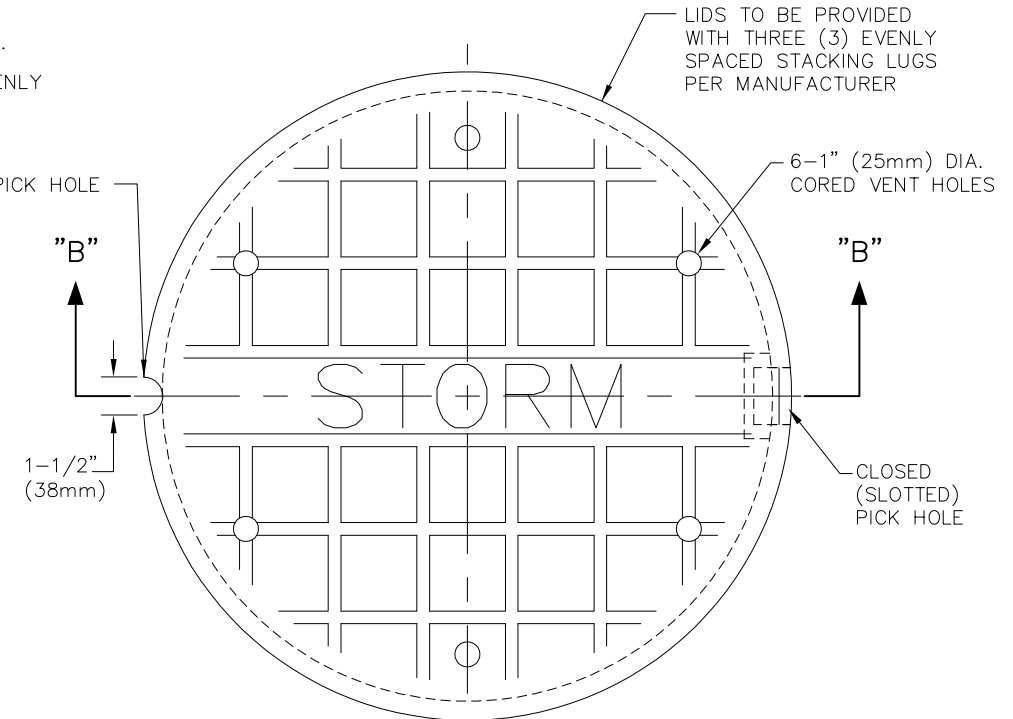


SECTION "B-B"

NOTE:
 4-1" (25mm) DIA. HOLES, EVENLY SPACED, SHALL BE PROVIDED IN THE FLANGE (NO. 9A FRAME).
 OR
 4-1"x1-3/4" SLOTTED HOLES, EVENLY SPACED, SHALL BE PROVIDED IN THE FLANGE (NO. 9 FRAME).

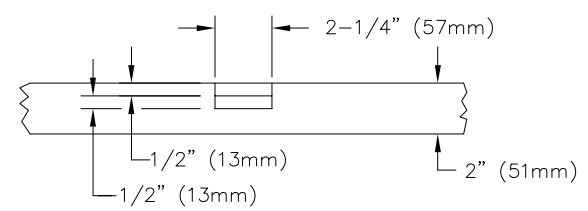


PLAN DETAIL FOR No.9 (10-1/2"HT.)
 & No.9A (5"HT.) FRAMES



PLAN No. 28 COVER

(STORM SEWER MANHOLE COVER, EJ 1700B, SHOWN.
 SANITARY SEWER MANHOLE COVER SIMILAR, SEE NOTES THIS SHEET)



CLOSED PICK HOLE DETAIL

NOTES:
 CASTINGS SHALL MINIMALLY MEET THE REQUIREMENTS OF ITEM 611-711.12, ASTM A 48, AND MINIMALLY BE CLASS 35B GRAY IRON. THE DESIGN SHALL BE ESSENTIALLY THE SAME AND EQUALLY AS STRONG AS THOSE SHOWN HEREON.

MINIMUM WEIGHTS:
 NO. 9 FRAME = 320 LBS. (HEAVY DUTY)
 NO. 9A FRAME = (HEAVY DUTY)
 COVER = 195 LBS.

BEARING AREAS OF FRAME AND COVER SHALL BE FINISHED SMOOTH AND FITTED SO AS TO PROVIDE A FIRM AND EVEN SEAT FOR ALL PORTIONS OF THE COVER IN THE FRAME. NO PROJECTIONS SHALL EXIST ON BEARING AREAS OF EITHER CASTING AND THE COVER SHALL SEAT IN ITS FRAME WITHOUT ROCKING. EACH FRAME AND COVER SHALL BE FITTED, MATCHED AND MARKED BEFORE DELIVERY TO THE PROJECT. THE BASE OF THE FRAME SHALL BE SET IN A FULL BED OF PORTLAND CEMENT MORTAR AND ADJUSTED TO CONFORM TO THE FINISHED SURFACE ELEVATION AND SLOPE.

PROVIDED THEY COMPLY WITH THE SPECIFICATIONS, DETAILS, DIMENSIONS AND MINIMUM WEIGHTS, ACCEPTABLE CASTING ASSEMBLIES ARE NEENAH No. R-1729, EAST JORDAN No. 1700Z ASSEMBLY WITH 1700B COVER, OR EQUAL WHEN USING No. 9 FRAME, AND NEENAH No. R-1729-1, EAST JORDAN No. 1703Z ASSEMBLY WITH 1700B COVER, OR EQUAL WHEN USING No. 9A FRAME. No. 9A FRAMES MAY BE USED OUTSIDE PAVED AREAS WHEN COVER REQUIREMENTS SO WARRANT THEIR USE.

COVERS SHALL BE STAMPED "STORM" FOR ALL STORM SEWER SYSTEM MANHOLES PER THE CURRENT "UNIFORM STANDARDS FOR SEWERAGE IMPROVEMENTS".

No.28 SANITARY COVERS: WHERE (IF) THIS CASTING ASSEMBLY IS SPECIFIED OR OTHERWISE USED FOR SANITARY SEWER MANHOLES, THE COVER SHALL BE CAST SOLID WITHOUT THE VENT HOLES AND THE OPEN PICK HOLE SHOWN HEREON. BOLT-DOWN COVERS OR SEALING GASKETS SHALL NOT BE REQUIRED OR USED UNLESS SPECIFIED IN THE PLANS.

COVERS SHALL BE STAMPED "SANITARY" FOR ALL SANITARY SEWER SYSTEM MANHOLES PER THE CURRENT "UNIFORM STANDARDS FOR SEWERAGE IMPROVEMENTS".

APPROVED CHIMNEY SEALS ARE REQUIRED FOR ALL NEW SANITARY SEWER MANHOLES AND FOR EXISTING PRECAST SANITARY SEWER MANHOLES ADJUSTED/RECONSTRUCTED TO GRADE. A MINIMUM THREE (3) INCH VERTICAL WALL IS REQUIRED BELOW THE CASTING FOR INSTALLATION OF CHIMNEY SEALS.

CUYAHOGA COUNTY ENGINEER	
CUYAHOGA COUNTY MANHOLE CASTINGS	DATE
	12-07-99 10-29-01 05-31-10 10-31-13 11-15-17 12-02-19 03-01-21
CONSTRUCTION DRAWING	MH-10C

