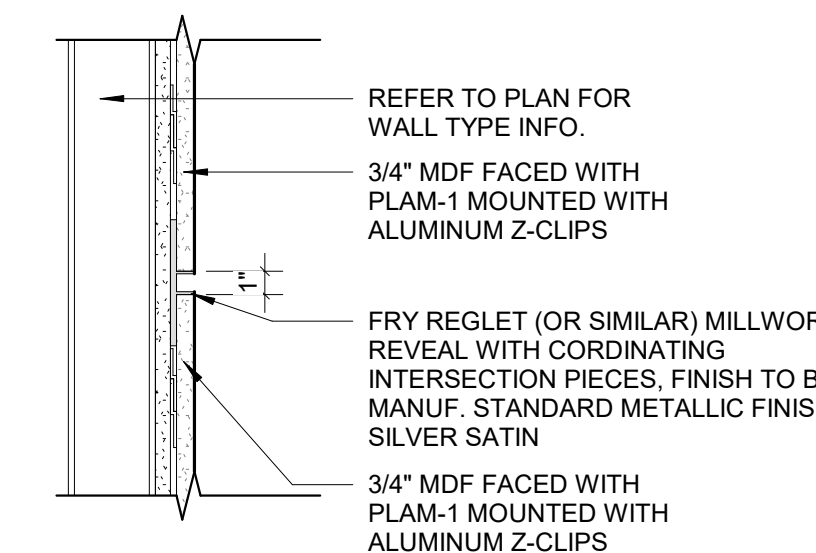
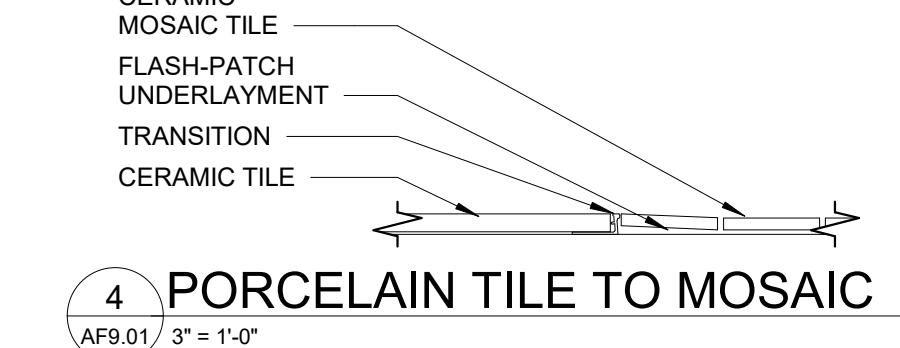
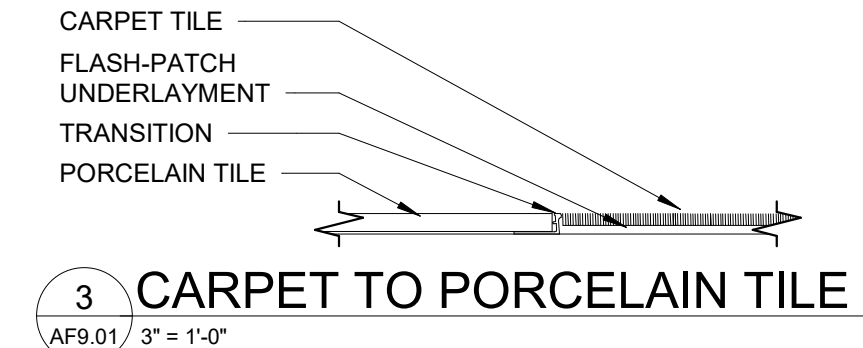
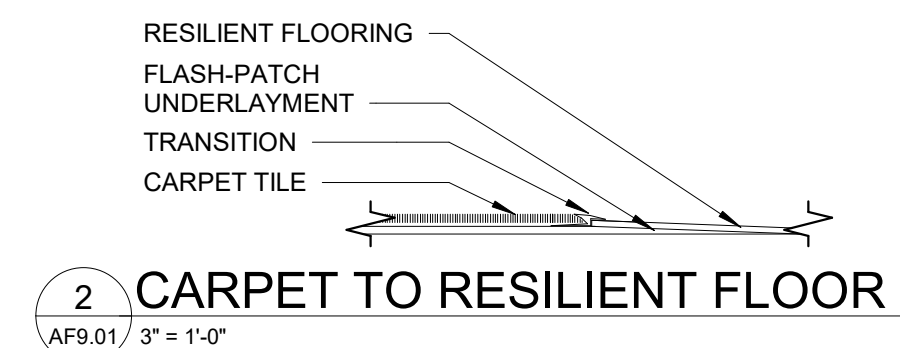
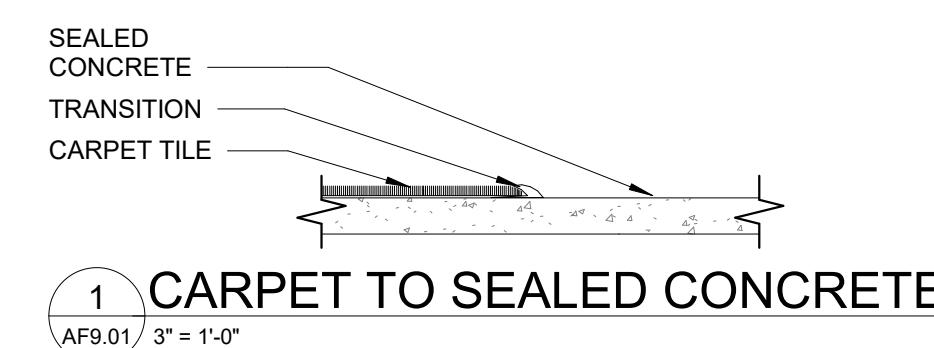


FINISH LEGEND							
TYPE	TAG	MANUF.	STYLE	COLOR	SIZE	INSTALL METHOD	COMMENTS
BASE							
PORCELAIN TILE BASE	PTB-1	LANDMARK CERAMICS	EMOTION	HAPPY WALNUT	FULL SIZE TILE CUT DOWN TO 4" WALL BASE	OFFSET INSTALL (NO GREATER THAN 30% AS REQUIRED BY MANUF.)	
RUBBER BASE	RB-1	TARKETT	BASEWORKS, TYPE TS, STRAIGHT BASE	63 BURNT UMBER	4" H	-	MANUF. STANDARD COILED LENGTHS, PRE-FORMED CORNERS
RUBBER BASE	RB-2	TARKETT	BASEWORKS, TYPE TS, COVED BASE	63 BURNT UMBER	4" H	-	MANUF. STANDARD COILED LENGTHS, PRE-FORMED CORNERS
CEILING							
ACOUSTICAL CEILING TILE	ACT-1	ARMSTRONG	DUNE, 15/16" PRELUDE GRID	WHITE	24" X 24" X 5/8"	TEGULAR	
ACOUSTICAL CEILING TILE	ACT-2	ARMSTRONG	DUNE, 15/16" PRELUDE GRID	WHITE	24" X 48" X 5/8"	-	EXISTING GRID TO REMAIN, CLEAN AND PAINT EXISTING GRID.
PAINT	PT-3	SHERWIN WILLIAMS	-	SW7007 CEILING BRIGHT WHITE	-	-	GYPSUM CEILINGS AND SOFFITS TO BE FLAT FINISH
SPECIALTY CEILING	SPC-1	ARMSTRONG	WOODWORKS, GRILLE TEGULAR	NATURAL WALNUT	24" X 48" X 2"	6723F51L4T5 GRILLE TEGULAR INSTALL	
FLOORING							
CARPET	CPT-1	BENTLEY MILLS	HIMITSU NI 4HM20	403741 CONCEAL	18" x 36" PLANK	ASHLAR	TYPE 6.6 NYLON, TARR TRAFFIC RATING: 3.5 SEVERE
LUXURY VINYL TILE	LVT-1	SHAW CONTRACT	SOLITUDE, 5MM	MINK 48720	6" X 48" PLANK	STAGGER, DIRECT GLUE	
PORCELAIN TILE	PFT-1	LANDMARK CERAMICS	EMOTION	HAPPY WALNUT	8" X 40" PLANK	ASHLAR (OFFSET NO GREATER THAN 30%)	
PORCELAIN TILE	PFT-2	ERAGON ENGINEERED STONE	CORNERSTONE SLATE	SLATE BLACK	MOSAIC 1-1/8" X 1-1/8"	-	
RESINOUS FLOORING	RES-1	STONHARD	STONSHIELD HRI 3/16" TROWLED MORTARBASE WITH BROADCAST QUARTZ AND CLEAR SEALER	STEEL GRAY	-	FOLLOW MANUF. WRITTEN INSTRUCTIONS	
RUBBER SPORTS FLOOR	SF-1	MONDO	VALOR, 10MM	BLACK	ROLLED SHEET, WIDTH: 186CM		WHERE SF-1 OCCURS, PROVIDE 12" WALL BASE TO MATCH FLOORING (IN 6MM THICKNESS), PROVIDE FRY REGLET J-CHANNEL TOP CAP (BLACK) TO CAPTURE EDGE.
SEALED CONCRETE	SC-1	H+C CONCRETE SEALER	CLEAR WET LOOK, WATER BASED		-		
STATIC DISSIPATIVE TILE	SDT-1	TARKETT	IQ TORO SC	TORO DARK GRAY 0102	TILE 610MMX 610 MM	GLUE-DOWN	
WALK-OFF CARPET	CPT-2	MANNINGTON COMMERCIAL	FIXTION, CHARGE	STATIC 34365	18" x 36" PLANK	HORIZONTAL BRICK ASHLAR	TYPE 6.6 NYLON, TARR TRAFFIC RATING: 3.5 SEVERE
MILLWORK							
CABINET HARDWARE	HDW-1	MOCKETT	DP105 SERIES - SQUARE PULL	SATIN NICKEL	4 3/16"	-	
PLASTIC LAMINATE	PLAM-1	WILSONART	TRACELESS	CHARCOAL VELVET 15504 ULTRA MATTE FINISH	-		
PLASTIC LAMINATE	PLAM-2	WILSONART	STANDARD LAMINATE, FINE VELVET FINISH	PINNACLE WALNUT 7992-38	-	REFER TO ELEV. FOR GRAIN DIRECTION	
SOLID SURFACE	SS-1	MEGANITE	-	STORM CLOUD M032	-	-	
SOLID SURFACE	SS-2	MEGANITE	-	CHARCOAL CONCRETE M023	-	-	COUNTERTOPS WHERE NOTED AND ALL NEW WINDOW SILLS.
MISC.							
CORNER GUARD	CG-1	CS AROVYN	CO-8 CORNER GUARD	STAINLESS STEEL: 304 ALLOY WITH #4 SATIN FINISH	6" H INSTALLED DIRECTLY ABOVE WALL BASE	SURFACE MOUNTED	
GROUT	GT-1	MAPEI	-	111 HICKORY	-	FOR USE WITH PFT	
GROUT	GT-2	MAPEI	-	14 BISCUIT	-	FOR USE WITH PWT-1	
GROUT	GT-3	MAPEI	-	107 IRON	-	FOR USE WITH PWT-2	
LOCKER	LK-1	HALLOWELL	HSPS-05 SINGLE-POINT SOLID PRODUCTION LOCKERS, DOUBLE TIER	706 HEATHER GRAY HR	12"W X 16"D, 72"H DOUBLE TIER	INSTALLED ON 4" H BASE	
MIRRORS	MR-1	BINSWANGER GLASS	GYM MIRRORS WITH SAFETY BACKING	-	AS INDICATED ON INTERIOR ELEVATIONS	WALL MOUNTED	
OPERABLE PARTITION	OP-1	MODERNFOLD	ACOUSTICLEAR, MANUAL, AUTOMATIC SEAL - PAIRED PANEL	BLACK POWDERCOAT, CLEAR TEMPERED, AND MANUF. STANDARD SOLID PANELS	AS INDICATED ON DRAWINGS	TOP SUPPORTED WITH AUTOMATIC TOP AND BOTTOM SEALS, G330 SUSPENSION SYSTEM	ALTERNATE 02
OPERABLE PARTITION	OP-2	MODERNFOLD	ACOUSTICLEAR, MANUAL, AUTOMATIC SEAL - PAIRED PANEL	BLACK POWDERCOAT, CLEAR TEMPERED	AS INDICATED ON DRAWINGS	TOP SUPPORTED WITH AUTOMATIC TOP AND BOTTOM SEALS, G330 SUSPENSION SYSTEM	ALTERNATE 02
ROLLER SHADES	RS-1	MECHO SHADE	MECHO5 MANUAL SHADE SYSTEM	SHADE CLOTH: SOHO 1902 CORNSILK, FASCIA COLOR:TBD, 5% OPENNESS	VAIRES, COORDINATE WITH WINDOW DIMENSION	JAMB MOUNT	
SHOWER CURTAIN	SHC-1	INPRO	CLICKEZE SHOWER CURTAIN	SUPER BIO STAT, COLOR: WHITE	REFER TO DRAWINGS	-	SHOWER CURTAIN ROD: BOBRICK, B6170-60 HEAVY DUTY SHOWER CURTAIN ROD, CUT DOWN AS REQUIRED, RINGS: #CE100800 STAINLESS STEEL GLIDE BEADS
TOILET PARTITIONS	TP-1	HADRIAN	STAINLESS STEEL TOILET PARTITONS	BRUSHED STAINLESS STEEL #4	REFER TO DRAWINGS	FLOOR MOUNTED	
WALL GRAPHIC	WG-1	TAKEFORM	AMPLIFY, TRAFFIC, 4 MIL, ROLL WIDTH: 54"	FINAL DESIGN TBD	REFER TO INT. ELEVATIONS	SELF-ADHESIVE	ARCHITECT TO PROVIDE FINAL DESIGN FILE
WINDOW FILM	WF-1	3M	FASARA	GRADATION	REFER TO DRAWINGS	-	
TRANSITIONS							
TRANSITION	TR-1	TARKETT	SLIMLINE TRANSITION, SLT-XX	32 PEBBLE	CONTRACTOR TO CONFIRM SIZE REQUIRED BASED ON FIELD CONDITIONS	-	CARPET TO RESILIENT
TRANSITION	TR-2	TARKETT	REDUCER, CRS-XX-A	32 PEBBLE	CONTRACTOR TO CONFIRM SIZE REQUIRED BASED ON FIELD CONDITIONS		CARPET TO SEALED CONCRETE
TRANSITION	TR-3	SCHLUTER	SCHIENE	STAINLESS STEEL			
WALLS							
FIBER REINFORCED PLASTIC	FRP-1	MARLITE	STANDARD FRP, PEBBLED	P 100 WHITE	-	INSTALLED DIRECTLY ABOVE MOP SINK TO 52" AFF	
PAINT	PT-1	SHERWIN WILLIAMS	-	SW7009 PEARLY WHITE	-	-	UNO WALLS TO BE EGGSHELL FINISH, HM DOORS AND FRAME TO BE SEMI-GLOSS
PAINT	PT-2	SHERWIN WILLIAMS	-	SW7069 IRON ORE	-	-	UNO WALLS TO BE EGGSHELL FINISH, HM DOORS AND FRAME TO BE SEMI-GLOSS
PORCELAIN WALL TILE	PWT-1	ERAGON ENGINEERED STONE	CORNERSTONE SLATE	SLATE WHITE NATURALE	24" X 48"	STACKED	MANUF. MIN. RECOMMENDED GROUT JOINTS
WALL PROTECTION	WP-1	CONSTRUCTION SPECIALTIES	ACROVYN WALL COVERING	PEARL #934		INSTALLED ABOVE WALL BASE	TRIM PIECE TO MATCH WALLCOVERING FINISH (MULTIPURPOSE ROOM)
WALLCOVERING	WC-1	MAHARAM	ERA 300062	029 SPEAKEASY	54" WIDTH, REPEAT: NON MATCH		ALTERNATE 03

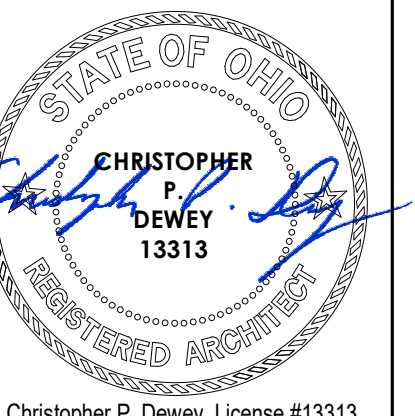
ADDENDUM NO. 1



5 WAITING ROOM WALL- PLAM-1
AF9.01 1 1/2" = 1'-0"



DEPARTMENT OF PUBLIC WORKS
FACILITIES DESIGN AND CONSTRUCTION
2079 EAST NINTH STREET
CLEVELAND OHIO 44115



Christopher P. Dewey, License #13313
Expiration Date 12/31/2025

CLIENT APPROVAL
AUTHORIZED REPRESENTATIVE SIGNATURE:

PRINTED NAME:

DATE SIGNED:

CUYAHOGA COUNTY
 VETERANS SERVICE COMMISSION
 HEADQUARTERS RELOCATION
 3950 CHESTER AVENUE, CLEVELAND, OH 44114
 RQ # 14327

REV. NO.	DESCRIPTION
1	ISSUED FOR PERMIT 02.01.2024 ADDENDUM 1

DRAWN	DATE
VAA	04.02.2024
CHECKED	PROJECT NO.
CPD	2227
SHEET NO.	

ORIGINAL DRAWING FURNISHED BY THE DEPARTMENT OF PUBLIC WORKS, FACILITIES DESIGN AND CONSTRUCTION SECTION.

NOTE: THESE PLANS ARE SCHEMATIC ONLY. VERIFY EXISTING CONDITIONS AND ALL DIMENSIONS IN FIELD.



AF9.01