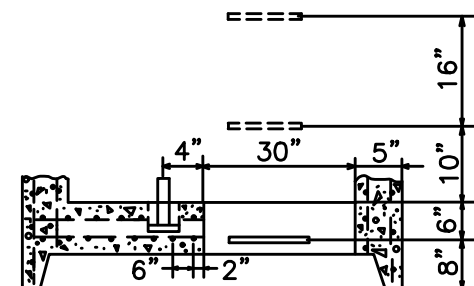
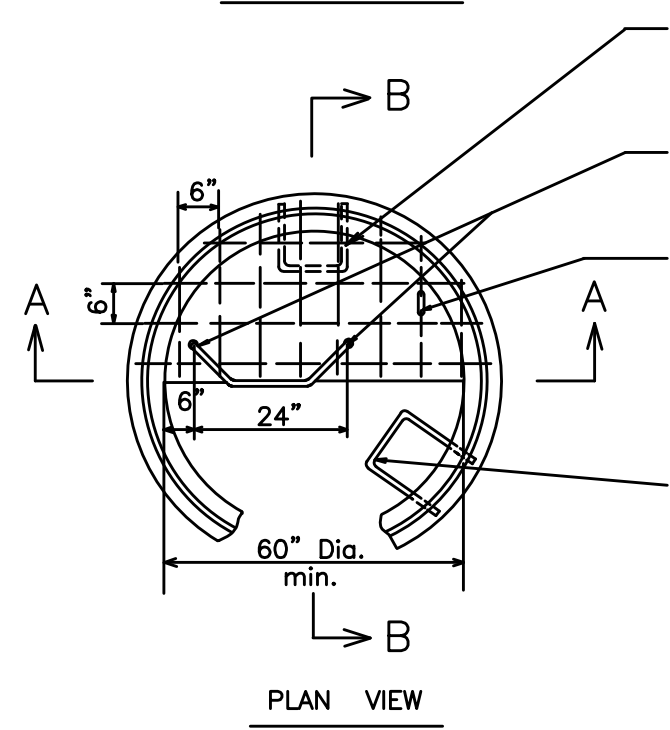


SECTION A - A



SECTION B - B



PLAN VIEW

1 1/2 " Dia. Solid steel bar
Hand Rail

2 1/4 " Dia. Steel plate 3/4 " thick
welded to both ends of 1 1/2 " steel
bar with two passes of 1/4 " fillet weld.

NOTE:

In manholes less than 28 feet deep to the invert, landing platforms are not required. In manholes over 28 feet deep to the invert, generally landing platforms shall not be required; however, the requirement for landing platforms shall be addressed on a case by case basis.

If the responsible authority requires landing platforms, the platforms shall be installed in manholes over 28 feet deep to the invert, and the maximum vertical spacing for landing platforms shall be 20 feet. The landings shall conform to the Uniform Standards Landing Riser Detail.

Manhole steps start 12" to 16" above landing platform floor and continue vertically above to the next landing platform or top outlet

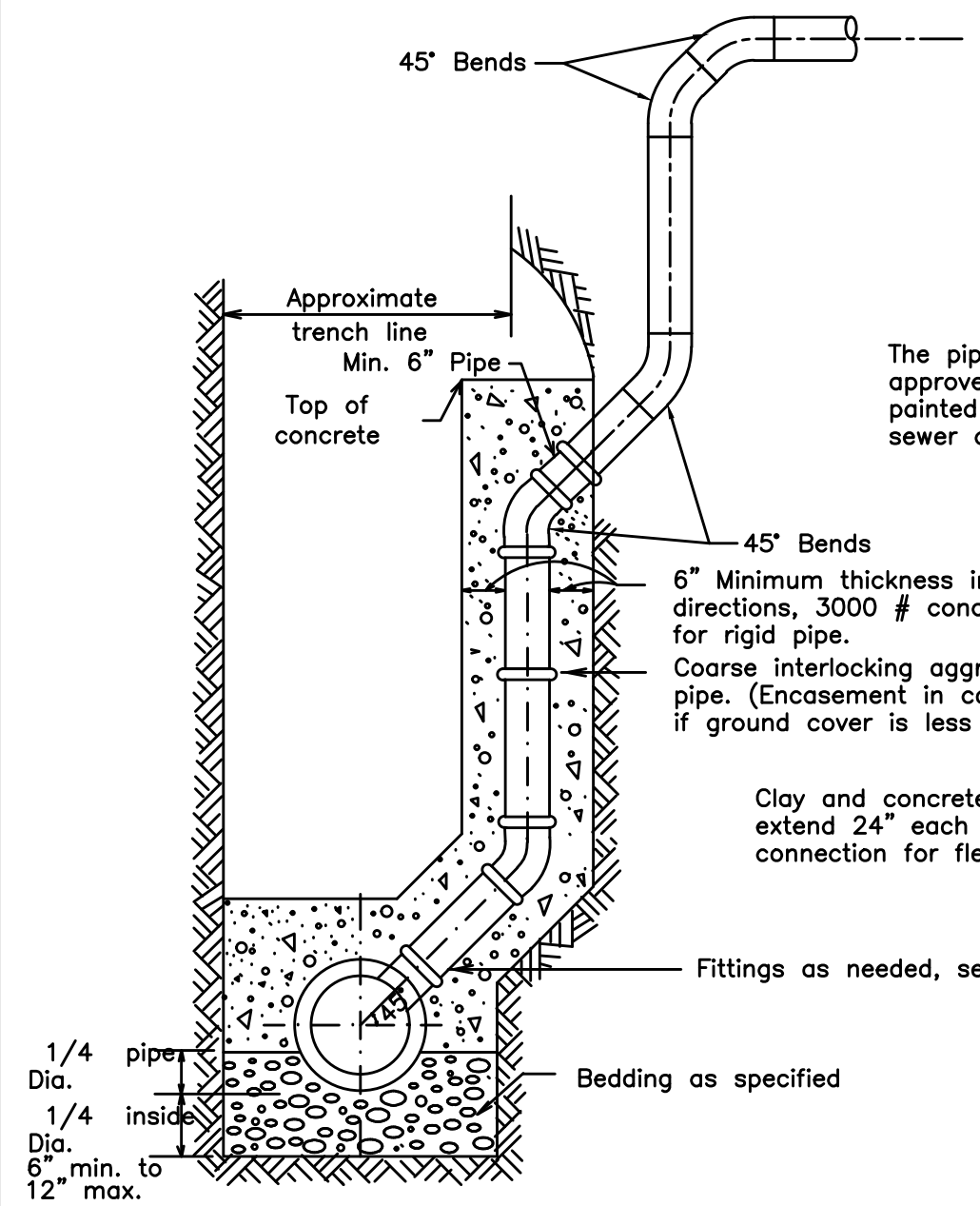
Two 2 1/2 " Dia. Precast openings 5" deep.

Typical bar placement in landing riser - #4 Rebar.

If multiple landings are required rotate adjacent landings 90°
A 90° clear opening must be seen from top to bottom of manhole.

Manhole steps stop 4' above top of landing platform.

LANDING PLATFORM
DETAIL
FOR PRECAST MANHOLE



TYPICAL
RISER DETAIL

REVISIONS:

SCALE
NO SCALE

DATE: JANUARY 2020

SCALE
NO SCALE

DATE: OCTOBER 2021