

INTERCEPTORS, SIZING REQUIREMENTS, AND ADDITIONAL REQUIREMENTS

Interceptors are required for oil, grease, sand, and other substances harmful or hazardous to the building drainage system, the public sewer, or wastewater treatment plant. A licensed professional engineer must submit the design, size, and location of pretreatment devices to the responsible authority for review and approval.

In traffic areas, the interceptors/traps/separators (and all piping) shall be designed to have adequate structural integrity and shall meet a minimum of HS-20 traffic loading requirements. Interceptors/traps/separators in traffic areas require a concrete driving surface over the unit and piping, with structural backfill around the unit and piping.

A. Car Washes

For commercial car washes, separators shall have a minimum capacity of 1000 gallons for the first bay, with an additional 500 gallons of capacity for each additional bay. An effluent sampling well shall be required.

Wash racks must be constructed to eliminate or minimize the impact of run-off from rain/storm events. Minimum requirements are roofed structures with at least two walls and appropriate grading to prevent stormwater infiltration into the sanitary sewer.

B. Indoor Automotive/Vehicle Repair Facilities (Garages and Service Stations) and Vehicle Storage Facilities (Note: This does not apply to outdoor repair facilities.)

Automotive repair shops which include a floor drain in their areas of operation, or where vehicles are serviced, greased, or repaired, or where gasoline is dispensed, shall be required to design, install, and maintain a grit interceptor/oil/water separator. The separator shall have a minimum capacity of 6 cubic feet for the first 100 square feet of area to be drained, plus a minimum of 1 cubic foot for each 100 square feet of area thereafter. An effluent sampling well may be required by the responsible authority.

Example: 4500 sf facility: 100 sf, gives 6 cu. ft.
4400 sf, gives 44 cu. ft.
Total 50 cu. ft. = 374 gal.; USE min. 400 gal.

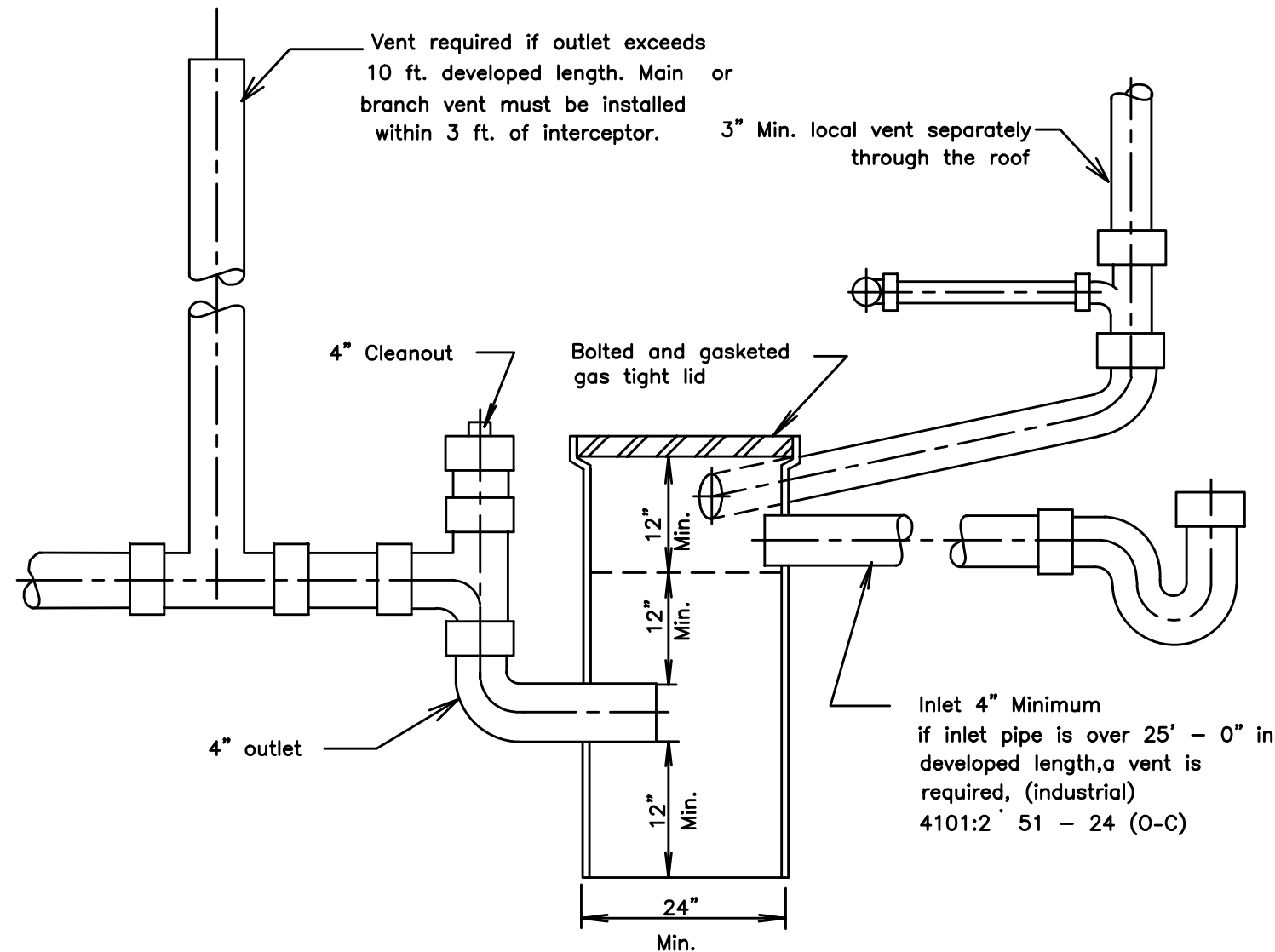
400 gal. (50 cf) is the minimum size required. For outdoor repair facilities, contact the responsible authority for requirements.

Parking Garages

Parking garages shall not require a grit separator unless vehicle servicing, repairing, washing, or gasoline dispensing occurs. Areas in commercial garages utilized only for storage of automobiles are not required to be drained through a grit separator.

In addition requirements:

1. The roof level of multi-level parking garages, even if vehicles are parked on the roof level, shall be drained to the storm sewer.
2. Interior levels of multi-level parking garages shall be drained to the sanitary sewer.



TYPICAL GARAGE OIL INTERCEPTOR

REVISIONS:

SCALE
NO SCALE

DATE: OCTOBER 2021