



# ***2007 ANNUAL REPORT***

*Prepared For The*

***City of Middleburg Heights***



**ROBERT C. KLAIBER, JR., P.E., P.S.**  
**CUYAHOGA COUNTY SANITARY ENGINEER**

---

## TABLE OF CONTENTS

Introduction from Robert C. Klaiber, Jr., P.E., P.S.....	2
Mission Statement & Overview.....	3
Appendix Description.....	14
Community Streets Cleaned.....	A-1
Community Streets Inspected.....	A-2
Projects Status.....	A-3
Service Program .....	A-4
Community Operating Expenses .....	A-5
Community Capital Expenses .....	A-6
Contact Information.....	Rear Folio



---

March 28, 2008

The Honorable Gary W. Starr  
City of Middleburg Heights  
15700 E. Bagley Road  
Middleburg Heights, Ohio 44130

Dear Mayor Starr:

I respectfully present the 2007 Cuyahoga County Sanitary Engineer's (CCSE) Annual Report for the City of Middleburg Heights for your review.

I am happy to announce that this past year was a noteworthy year for the office. As in years past, the office continues to grow amidst a variety of consistent changes.

This annual report outlines the overall workings of the office, work that was completed within your municipality and operating expenses for the past year. The various projects that were reviewed, approved and implemented throughout the past year are also incorporated. As in the previous report to your community, maps that display areas where system mainlines were cleaned & inspected, construction activity locations, inflow/infiltration study areas, house visits and house lateral connections were cleaned or inspected are attached.

In closing, I am grateful for the opportunity bestowed upon me as your County Sanitary Engineer. I will continue to work hard to meet the varying needs and concerns of your community.



Very truly yours,

Handwritten signature of Robert C. Klaiber, Jr., P.E., P.S.

Robert C. Klaiber, Jr., P.E., P.S.  
Cuyahoga County Sanitary Engineer

cc: Michael Mackay, P.E.  
Frank Castelli

---

## Mission Statement

***"Our mission is to protect, preserve and promote the public health and welfare of Cuyahoga County residents by managing, maintaining and operating wastewater infrastructure."***

**Robert C. Klaiber, Jr., P.E., P.S.**

### OVERVIEW

The Cuyahoga County Sanitary Engineering Division (CCSE) was established in 1919 to administer the authority vested in the Board of County Commissioners in matters of wastewater, storm water and water supply management. State law extends to the Board of County Commissioners the authority to create and maintain a Sanitary Engineering Division under the supervision of a registered professional engineer. In April 2004, the County Commissioners appointed the County Engineer, Robert C. Klaiber, Jr., P.E., P.S., to assume the additional duties of County Sanitary Engineer.

Mr. Klaiber's focus on needs assessment, engineering feasibility studies, maintenance and repair of aging sewer lines, as well as other infrastructure-related issues, has a direct impact on commercial and residential development, job creation and expanded tax base in the communities served by the Sanitary Engineer.

The Sanitary Engineering Division is a major source of information and guidance that mayors, municipal engineers and service directors rely on when making infrastructure decisions within their community. The Division has considerable experience in the maintenance of sanitary and storm sewer lines, many of which are old and have performed beyond their design life. Moreover, the Division has much expertise with respect to wastewater treatment plants and pump stations.

Engineer Klaiber directs an operation which encompasses 30 communities and maintains nearly 820 miles of sanitary sewers; treats approximately 170 million gallons of wastewater per year; and operates 42 sewage-pumping stations, as well as 3 wastewater treatment plants throughout Cuyahoga County. The Division also has agreements with municipal corporations for the establishment, operation and maintenance of sanitary sewers and facilities. In addition, standards for any system connected to or served by a County owned improvement are established and enforced.

Working in cooperation with the Ohio Environmental Protection Agency (Ohio EPA), the Northeast Ohio Regional Sewer District (NEORS), the City of Cleveland Division of Water and the Cuyahoga County Board of Health, the Division manages a Capital Improvement Program (CIP) used for upgrading or replacing the existing infrastructure and for expanding sewers to unsewered areas. The CIP includes

---

information about project type, location, funding, preliminary engineering and final plan development.

All operating funds for the Division are created through fees and assessments. The Division does not receive a subsidy through the County General Fund. It does, however, use the General Fund's bonding capacity.



## GOALS

The goals of the Sanitary Engineering Division are to:

- Reduce the number of flooded basements by decreasing mainline blockage, minimize the infiltration and inflow of storm water in the sanitary system and evaluate structural integrity of the entire sewer system;
- Operate wastewater treatment plants in compliance of National Pollution Discharge Elimination System (NPDES) permit parameters;
- Provide guidelines for new construction through use of *Uniform Standards for Sewerage Improvements*;
- Review and approve new improvement plans; and
- Provide infrastructure needs assessment for communities.

---

## **SERVICES PROVIDED**

The Sanitary Engineering Division provides a variety of services that benefit the Greater Cleveland community. The important functions include:

- Engineering
- Capital improvement planning
- Production of maps
- Pump station operation & maintenance
- Sanitary sewer cleaning & maintenance
- Collection of storm sewer maintenance fund
- Laboratory testing
- Construction inspection
- Sewer builder's licenses & permits
- Record keeping (As built plans & test tee locations)
- Geographic information systems (GIS)
- Wastewater treatment plant operation & maintenance

The Division also provides support services in the areas of finance, data processing and record keeping.

## **SERVICE DELIVERY SYSTEM**

The CCSE provides a variety of sewerage system maintenance options to local communities. Whereas the Northeast Ohio Regional Sewer District maintains the major trunk sewers and wastewater treatment plants, the Division offers services designed to meet and develop community needs. The design and structure of the CCSE allows flexibility in the delivery of services to each community. A service delivery package can range from full-service to partial-service, depending upon the need of the municipality. Available services include:

## **ENGINEERING SERVICES**

- Capital improvement planning
- Plan review and approval of all new sewer improvements within the County sewer districts
- Construction management
- Geographic information systems (GIS)
- Project design
- Engineering analysis (required for operation of facilities and the collection system)
- Operational checks (EPA permit compliance)



---

## FACILITIES OPERATION AND INSPECTION

- Operation and maintenance of wastewater treatment plants and pump stations
- Inspection of new wastewater collection and transportation systems within County sewer districts
- Issuance of connection permits
- Issuance of sewer builders' licenses
- Development, implementation and monitoring of safety guidelines
- Laboratory testing of wastewater to determine extent of pollutants and necessary treatment process adjustments

## SEWER MAINTENANCE

- Sanitary sewer maintenance
- Cleaning of mainline sewers in each district
- Videotape inspection of sewers to determine condition of lines
- Smoke & dye testing of systems to identify potential problems and cross-connections
- In-house completion of minor repairs on system as needed
- Cleaning of sewer laterals (from inspection tee to mainline)

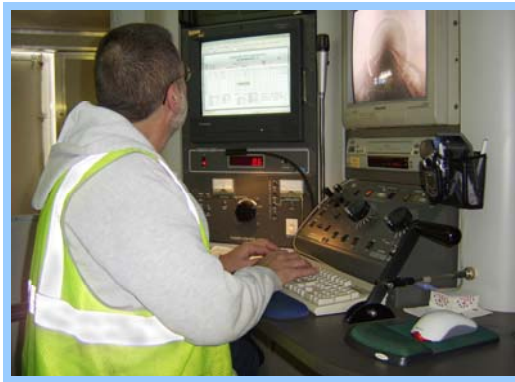


\* Inspection Camera

---

## **ADMINISTRATIVE SUPPORT SERVICES**

- Data management/mapping program
  - Geographical and non-geographical information systems (development and implementation)
  - Maps and spatial analysis for design and service management
- Finance management
  - Fiscal oversight of annual operating budget in excess of \$11 million
  - Fiscal oversight of annual capital improvement budget of \$4 million
  - Manage automated cost accounting systems for monitoring and tracking revenues and expenditures
  - Determination and assessment of user fees for 80,000 plus parcels



## **SUMMARY OF SERVICE DELIVERY**

Services provided to full-service communities include engineering, inspection, maintenance and operation of wastewater collection system. In partial service communities, services are provided to the area's tributary to County owned facilities upon request. The Division has met its commitment to users in the following areas:

- Develop financing plan and manage capital construction projects
- Obtain alternate funding grants to offset costs of construction
- Review construction plans in thirty communities
- Develop computerized mapping program to identify the location of sewer systems and structures
- Process an average yearly flow of 466,000 gallons of wastewater
- Laboratory support for wastewater treatment plant parameters; perform approximately 10,072 tests annually
- Maintain approximately 820 miles of sanitary sewers; clean approximately 4,790 house connections annually
- Operate and maintain 42 wastewater pump stations, throughout the County



---

## INTERNAL STRUCTURE OF THE DIVISION

### ENGINEERING SECTION

The Engineering Section provides technical services to its customers, including capital project planning, grant and loan administration, design engineering, construction management and inspection of wastewater treatment and conveyance facilities.

This section oversees capital construction projects that include monies in the form of grants obtained from the State of Ohio. Monies for the lining of sewers and repairing, replacing or rehabilitating existing sanitary and storm sewers are also expended. The Division invested funds on repairing, enhancing and/or eliminating wastewater treatment plants and pumping station facilities.

The Engineering Section reviews design plans for approximately sixty-five construction projects per year on behalf of thirty communities.

In addition, the Engineering Section coordinates and processes legislation, maintains files and legal libraries of pertinent federal, state and local laws and renders technical assistance to other sections regarding changes in laws or regulations. Working in cooperation with the Commissioners' legislative representative, it reviews and comments on legislation proposed in the Ohio General Assembly.



\* Valley Ranch Pump Station



---

## WASTEWATER TREATMENT PLANTS

The County operates 3 wastewater treatment package plants. These facilities treat 170,000,000 gallons per year. The standards are set for each facility by the Ohio EPA through the National Pollution Discharge Elimination System (NPDES) permit. Permits are renewed with new guidelines set every five years. The support staff consists of wastewater operators licensed by the Ohio EPA who monitor the conditions of the plants and make necessary process adjustments to meet the NPDES permit. The Water Quality Control Laboratory provides the required analytical data for process control and for the monthly operating reports as enforced by the Ohio EPA. The operators have the ability to address minor repairs with a maintenance mechanic staff that handle major repairs. Following the guidelines of its NPDES permit, the County has installed a 50,000 gallon equalization tank towards the elimination of the Echo Hills Treatment Plant in Brecksville.

## PUMP STATIONS

The County operates 42 pumping stations throughout the county. A Supervisory Control and Data Acquisition (SCADA) system monitors 33 of the stations. The system provides alarms and operational status through a central computer that can be accessed from a remote computer. It is our goal to upgrade all County operated pump stations and to expand the SCADA system to all new projects including new pump stations that were installed in Pepper Pike and Gates Mills.



\* Brainard Pump Station

---

## **OPERATIONS MAINTENANCE**

The Operations Maintenance area has developed a preventative maintenance program to reduce costs by performing maintenance on and repair/rebuild jobs in-house. The preventative maintenance program has substantially reduced facility downtime by eliminating time-consuming solicitation for outside contractor services. As a result, many potential violations of the NPDES permits have been avoided.

## **CAPACITY MANAGEMENT, OPERATION AND MAINTENANCE PROGRAM**

In December of 2005, Cuyahoga County submitted the self-audit to the U.S. Environmental Protection Agency (U.S. EPA), Region 5 in Chicago. The latest findings as of December of 2006 found 12 of the 30 communities have had their system approved by the U.S. EPA with the only stipulation that any sanitary sewer overflows be reported to the Ohio EPA. In response our agency has enhanced its sanitary sewer overflow procedures and notifications.

## **WATER QUALITY CONTROL LABORATORY**

The Laboratory has expanded over the past thirteen years from its initial wastewater analysis of treatment plants owned and operated by the County. Analysis is also conducted from samples brought to us from the Cuyahoga County Board of Health. These samples range from beaches, lakes, streams and septic systems throughout the County to Phase II Storm Water samples, as mandated by the EPA. The Laboratory is also collaborating with the Cuyahoga County Soil and Water Conservation District to analyze soil samples. This analysis of soils and gardens helps to determine the quantity of fertilizer necessary, thereby reducing the discharge of excess chemicals and nutrients into our waterways. Certification for testing lead paint in homes was accomplished in 2007.

## **INSPECTION/PERMITS**

The Inspection and Permit section operates in 30 suburban municipalities. This section's three major functions are: the licensing of contractors and issuance of permits to construct mainline sanitary/storm sewers, appurtenances and special projects, including wastewater treatment plants and pumping stations; performs inspection and testing of the sewerage construction projects and approve completed projects; maintain the permanent records for sewerage construction projects and provide information for County departments, engineering consulting firms, contractors and the public.



---

## SEWER MAINTENANCE

The Sewer Maintenance section provides a full-service program to clean, evaluate, maintain structural integrity, videotape and perform construction on the sanitary and storm sewers. The general program consists of cleaning all sanitary sewers every three years and televising all sanitary sewers every six years. This is well within the NEORSD's "best management practices" guidelines. The Division cleaned 4,790 house connections this past year. The goal is to reduce basement flooding through inflow/infiltration reduction, reduce blocked mains, clean service connections and maximize sewer capacity.

The Sanitary Engineering Division has an ongoing sewer flow-metering program. The in-sewer meters are primarily used to compare normal dry day flows to wet weather flows in sanitary main lines. The meters are also used to measure wastewater flows coming into treatment plants and water flows in storm sewers. Through the use of the flow meters, the Division can isolate areas affected by excessive volumes of clean runoff into the sanitary sewer system. Meters can detect extraneous water from illegal downspout connections or from rainwater infiltrating through the ground and into sanitary sewers through bad pipe joints and cracked or broken pipe.



\* Jet Truck

---

## **FINANCE SECTION**

The Finance Section provides support services to various units within the Sanitary Engineering Division. Automated cost accounting programs and systems ensure accurate tracking and monitoring of expenditures, revenues, rate structures and other data that provide planning for capital projects and operational budgets. All systems and programs are operated under generally accepted accounting principles.

The Finance Section oversees an annual operating budget in excess of \$11 million and an annual capital improvement budget of \$4 million. The capital improvement plan is administered by this section and revenues, as well as expenditures, are approved and monitored for each individual improvement. This section is responsible for accounts receivable, accounts payable, cost accounting, inventory control, vehicle inventory management, capital project financing, purchase of supplies and equipment and determination and assessment of users fees.

## **CONCLUSION**

In addition to providing a broad range of services, the Cuyahoga County Sanitary Engineer, Robert C. Klaiber, Jr., P.E., P.S., has implemented projects designed to improve effectiveness and service efficiency. The CCSE emphasizes its commitment to its mission to serve the communities of Cuyahoga County. Goals and projects have been carried out in line with this mission. The purchase of more efficient equipment, better preventative maintenance practices, along with staff training and development, have resulted in greater productivity. The implementation of improved accounting methods assures that current and future costs and receipts will be financially accountable to the communities. It is the CCSE's continued commitment to provide the most effective level of water pollution control, within the limits of available resources, to the municipalities and townships of Cuyahoga County.





---

## **APPENDIX DESCRIPTION\***

The following appendices contain a variety of reports representing the services provided to communities in 2007.

The CCSE follows a manhole-to-manhole, sewer segment-based accounting method for Jet Cleaning and TV Inspection maintenance services. The first two reports contain listings of the collection system, (sanitary and combination sewers) cleaned and inspected for the year by street.

The following report discloses the more significant projects submitted and reviewed by the Permit and Engineering sections during the year for your community. Smaller review services such as house connections or ongoing, intermittent review of large multi-phase projects spanning several years of development are not shown on this report.

The final appendices are from the Finance and Billing section. These reports provide a breakdown of operating expenses, capital project costs contracted for the community, as well as additional services including house visits, inflow/infiltration studies and construction activity.

A hardcopy map is enclosed showing areas where collection system mainlines were Jet cleaned and TV inspected, construction crew activity locations, house visits and if house lateral connections needed to be cleaned or inspected. The CD provided contains a PDF file of the map, which can be copied for distribution. Adobe Corporation's free reader software is required and can be downloaded from [www.adobe.com](http://www.adobe.com).

\* Please note: These appendix reports are provided only to communities for which the specific service is provided by CCSE. For example, if regularly scheduled mainline cleaning service is not provided for your community, a map was not produced. Similarly, if project review or capital project management services are not provided to your community, then there is no corresponding report. Certain communities are provided limited maintenance on county improvement mainlines and/or facilities only.



---

# Section A-1

## Community Streets Cleaned\*

\* No service provided if section is blank

---

---

# COLLECTION SYSTEM JET CLEANING 2007

---

STREET	SEGMENTS	FOOTAGE
<b>MIDDLEBURG HEIGHTS</b>		
ARROWHEAD TRAIL	8	1654
BAGLEY EASE.	20	4886
BAGLEY ROAD	35	6551
BALDWIN CREEK DRIVE	16	2879
BARDBURY AVENUE	3	961
BARRIEMORE AVENUE	5	1187
BARTHOLOMEW DRIVE	8	1644
BEACHDELL DRIVE	3	371
BELFAIR DRIVE	6	1259
BELMEADOW DRIVE	5	867
BENEDICT DRIVE	7	2026
BIG CREEK EASE.	1	168
BIG CREEK PARKWAY	39	9358
BLUE SPRUCE OVAL	1	236
BRIARCLIFF EASE.	5	794
BRIARCLIFF PARKWAY	4	899
BRINBOURNE AVENUE	3	959
BROOKSIDE PARKWAY	7	1890
BROOKSTONE TRAIL	5	1247
BUNKER HILL ROAD	5	1185
CANYON CIRCLE	2	680
CHEROKEE EASE.	1	386
CHEROKEE TRAIL	17	4820
CHIPPEWA EASE.	2	359
CHIPPEWA TRAIL	9	2368
CLAREMONT AVENUE	21	3675
COMSTOCK CIRCLE	3	575
CONCORD TRAIL	7	1331
COTTONWOOD OVAL	1	208
CRAIGMERE DRIVE	11	2754
DELAWARE DRIVE	6	1408

<b>STREET</b>	<b>SEGMENTS</b>	<b>FOOTAGE</b>
DOGWOOD CIRCLE	3	630
EAST BAGLEY ROAD	5	1212
EDEN	2	284
ELDERDALE DRIVE	4	1208
ELISE DRIVE	2	589
ELMDALE ROAD	9	2044
ENGLE EASE.	9	1679
ENGLE ROAD	27	7285
ENGLEWOOD DRIVE	10	2236
ENGLEWOOD EASE.	1	360
ERWIN COURT	1	214
FAIRWEATHER DRIVE	5	1254
FARNUM AVENUE	7	1554
FOREST OVAL	4	725
FOWLES ROAD	7	1908
FRANKE ROAD	6	1650
FRY EASE.	1	184
FRY ROAD	4	1049
GALEMORE DRIVE	6	1776
GERALD DRIVE	31	5028
GLENRIDGE AVENUE	15	3930
GRANT BOULEVARD	7	1850
HEATHER LANE	5	1109
HEMLOCK LANE	1	348
HICKOX BOULEVARD	10	2816
HUMPHREY ROAD	1	308
HYDE EASE.	1	275
HYDE PARK DRIVE	3	601
INDIAN CREEK DRIVE	24	5385
ISAAC DRIVE	4	995
JAMES DRIVE	5	1358
JAMES EASE.	3	888
KINGMAN DRIVE	1	402
KIWANIS DRIVE	5	946

<b>STREET</b>	<b>SEGMENTS</b>	<b>FOOTAGE</b>
LAKE ABRAM DRIVE	3	1077
LANIER DRIVE	4	1485
LARES LANE	2	329
LEXINGTON GREEN	3	740
LOGAN DRIVE	2	572
MALLARD COVE	2	495
MARKAL DRIVE	8	1571
MAUREEN DRIVE	4	1045
MIDDLEBROOK BOULEVARD	20	5790
MIDDLEBURG HEIGHTS BOULEVARD	1	236
NETHERSOLE DRIVE	4	805
NEWTON ROAD	24	4219
OLD OAK BOULEVARD	16	3922
OLD OAK EASE.	6	1986
PACKARD AVENUE	4	740
PACKARD CIRCLE	3	395
PACKARD EASE.	2	371
PARKLAWN AVENUE	5	1474
PAULA DRIVE	18	3634
PAWNEE EASE.	3	888
PAWNEE TRAIL	16	4363
PEARL EASE.	4	1136
PEARL ROAD	20	3847.25
PECAN OVAL	1	212
PINEVIEW COURT	3	765
PINEWOOD DRIVE	4	922
RAGALL PARKWAY	1	330
RAMONA DRIVE	6	1301
RED ROOF EASE.	3	600
ROBERT DRIVE	5	1378
ROSBOUGH DRIVE	4	683
SANDALHAVEN DRIVE	6	1790
SARATOGA ROAD	8	1154
SENECA DRIVE	5	1345

<b>STREET</b>	<b>SEGMENTS</b>	<b>FOOTAGE</b>
SMITH EASE.	2	546
SMITH ROAD	9	1735
SPRINGDALE DRIVE	5	1077
STONYBROOK DRIVE	5	1275
STROUD ROAD	6	1777
SUNRISE CIRCLE	1	380
TIMBER	5	755
WEBSTER ROAD	10	2491
WENDY DRIVE	2	461
WENGATZ DRIVE	3	853
WENGATZ EASE.	2	700
WEST 130 EASE.	4	748
WEST 130 STREET	9	1996
WHITE OAK CIRCLE	1	194
WILLIAMSBURG COURT	4	980
WINONA CIRCLE	3	431
WOOD CREEK DRIVE	7	1234
YORKTOWN	3	922
<b>Total For Community</b>	<b>796</b>	<b>183,820.25</b>



---

# Section A-2

## Community Streets Inspected\*

\* No service provided if section is blank

---

---

# COLLECTION SYSTEM TV INSPECTION 2007

---

STREET	SEGMENTS	FOOTAGE
<b>MIDDLEBURG HEIGHTS</b>		
ALAN PARKWAY	11	2863
ALDERSYDE DRIVE	4	929
ALDERSYDE EASE.	2	358
ARROWHEAD TRAIL	8	1716
BAGLEY ROAD	1	61
BARDBURY AVENUE	5	1525
BARRIEMORE AVENUE	4	993
BARTHOLOMEW DRIVE	9	1916
BELFAIR DRIVE	6	1251
BELMEADOW DRIVE	5	880
BIG CREEK PARKWAY	15	3623
BRIARCLIFF PARKWAY	8	1479
BUNKER HILL ROAD	4	994
BYRON BOULEVARD	7	1614
CHIPPEWA TRAIL	10	2582
CONCORD TRAIL	6	1190
CRAIGMERE DRIVE	14	3480
DELAWARE DRIVE	5	1183
EDEN	1	144
FRY ROAD	2	555
GERALD DRIVE	8	1340
GLENRIDGE AVENUE	11	2733
GRANT BOULEVARD	4	948
HEATHER EASE.	2	489
HYDE PARK DRIVE	2	470
INDIAN CREEK DRIVE	17	3896
JAMES EASE.	1	301
KLEIN DRIVE	5	1437
KLEIN EASE.	2	371
LANIER DRIVE	3	1095
MOHAWK TRAIL	15	3348

<b>STREET</b>	<b>SEGMENTS</b>	<b>FOOTAGE</b>
MONTGOMERY ROAD	2	309
NETHERSOLE DRIVE	6	1849
OLD PLEASANT VALLEY ROAD	10	2879
PACKARD AVENUE	4	745
PARKLAWN AVENUE	8	2016
PEARL ROAD	22	6511
PINEWOOD DRIVE	4	945
PRINCETON PLACE	2	570
RAGALL PARKWAY	14	3248.2
REVERE CIRCLE	3	782
REVERE EASE.	1	286
ROBERT DRIVE	2	530
SARATOGA ROAD	8	1171
SENECA DRIVE	3	765
SHAWNEE TRAIL	9	2775
SHELBURNE DRIVE	6	1415
SPRAGUE EASE.	3	772
TRENTON TRAIL	6	1820
UHLIN DRIVE	8	2312
WEBSTER ROAD	8	2191
WEST 130 STREET	1	55
<b>Total For Community</b>	<b>327</b>	<b>79,710.20</b>

---

# Section A-3

## Projects Status\*

\* No service provided if section is blank

---

# CCSE PROJECT REVIEWS

MUNICIPALITY MIDDLEBURG HEIGHTS

PROJECT 07-009 SOUTHLAND REDEVELOPMENT SHOPPING CENTER

## STAGE 1 FUTURE GIANT EAGLE

Review Date	Approved	Revise	Comments
19-MAR-07	N	N	STAGE SUBMITTED
20-MAR-07	N	Y	None
11-MAY-07	Y	N	None

---

# Section A-4

## **Service Program\***

\* No service provided if section is blank

---



---

City of Middleburg Heights

<u>Type</u>	<u>Community Total</u>
Sanitary Sewers	364,875 Feet
Manholes	1,591 (Approximately)

2007 Service Program

<u>Program</u>	<u>2007 Activity</u>
1) High Pressure Cleaning*	197,440 Feet
2) House Service	689 Calls
3) Television Inspection*	85,673 Feet
4) Construction Activities	125 Jobs
5) Smoke and Dye Testing	328 Tests
6) Construction Permits Issued (Commercial)	4
(Residential)	32
7) Plan Review	3 Plan(s)
8) Capital Projects	2,431 Feet (New Sewer Lines Inspected)

\*Information includes footages for sanitary (collection system) and storm sewers.

---

---

# Section A-5

## Community Operating Expenses

---

---

**City of Middleburg Heights**

**2007 Operating Expenses**

<b><u>Activity</u></b>	<b><u>Cost</u></b>
<b>1. Maintenance of Sanitary Sewerage Systems</b>	<b>\$963,291.00</b>
<b>2. Pump Station Operation and Maintenance</b>	<b>\$ .00</b>
<b>3. Waste Water Treatment Plant Maintenance</b>	<b>\$ .00</b>
<b>4. Engineering and Inspection</b>	<b>\$81,270.00</b>
<b>5. Capital Expenses (see next page if any)</b>	<b>\$16,400.00</b>
<b>6. Sanitary Overhead</b>	<b>\$31,962.00</b>
<b>Total Expenses:</b>	<b>\$1,092,923.00</b>

---

---

# Section A-6

## Community Capital Expenses

\* No service provided if section is blank

---

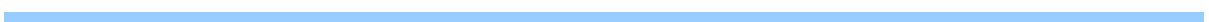
---

City of Middleburg Heights

2007 Capital Expenses

Webster Road Storm Reimbursement \$ 16,400

Total Capital Expenses: \$ 16,400



# Contact Information

## Address

Cuyahoga County Sanitary Engineering  
6100 West Canal Road  
Valley View, Ohio 44125

## Web Address

[www.sanitaryeng.cuyahogacounty.us/](http://www.sanitaryeng.cuyahogacounty.us/)

## Phone Numbers

### Administration

(216) 443-8215

### Dispatch

(216) 443-8201

### Sanitary Engineer

Robert C. Klaiber, Jr., P.E., P.S.

### Chief of Staff

Kevin F. Payne

### Chief Deputy Engineer

Stanley D. Kosilesky, P.E.

### Fiscal Officer

Michael W. Chambers, CPA

### Chief Engineer

William Schneider, P.E.  
(216) 443-8205

### Sewer Maintenance

John Neff  
(216) 443-8219

### Environmental Services

Ann McCready-Gliha  
(216) 443-8203

### Construction

Gary Green  
(216) 443-8225

### Facility Manager & Safety

Thomas Regas  
(216) 443-8234

### Inflow & Infiltration

Jimmy Moore  
(216) 443-8229

### Fiscal

Edward Premen  
(216) 443-8237

### Inspection

James Johnson  
(216) 443-8208

### Laboratory Services

Suzanne Britt  
(216) 443-8278

### House

James Swedyk  
(216) 443-8227

### Management Information Systems

Leon Ozebek  
(216) 443-8238

### Sewer Jetting

Guy Swindell  
(216) 443-8226

### Treatment Plant Operations

Robert Martz  
(216) 443-8222

### Televised Inspection

Richard Apanaites  
(216) 443-8224