



2011 ANNUAL REPORT

Prepared For The:

CITY OF MIDDLEBURG HEIGHTS



CUYAHOGA COUNTY
DEPARTMENT OF PUBLIC WORKS

TABLE OF CONTENTS

Introduction.....	I
Mission Statement & Overview.....	2
Appendix Description.....	II
Community Streets Cleaned.....	A-1
Community Streets Inspected.....	A-2
Project Status.....	A-3
Service Program.....	A-4
Community Operating Expenses.....	A-5
Community Capital Expenses.....	A-6
Contact Information.....	Rear Folio



CUYAHOGA COUNTY DEPARTMENT of PUBLIC WORKS

March 31, 2012

The Honorable Gary W. Starr
City of Middleburg Heights
15700 E. Bagley Road
Middleburg Heights, Ohio 44130

Dear Mayor Starr:

It is with great pride that I present to you the 2011 Annual Report for the Cuyahoga County Department of Public Works Sanitary Service. This report contains a detailed overview of the components that bring together the agency, information on work completed within your municipality, including operating expenses over the past year. As in previous reports, we have included maps displaying the following: the cleaning and inspection of system mainlines, locations of construction activity, inflow and infiltration areas of study, house visits, and the cleaning and inspection of lateral connections, as it pertains to the service in which we provide to you.

This year has been a dynamic one for Cuyahoga County. We have implemented many changes to better our department and this can be felt by the communities we service. We are continuously striving to incorporate best practices into the way we perform each day, and I am confident that this agency has the tools to offer you the highest level of both customer service and innovative technologies. The Charter's creation of the Department of Public Works has afforded us the ability to utilize a larger and more diverse work force, and thus be able to better dispatch staff to your community during high-volume rain events. It is our obligation to provide the most effective level of water pollution control possible.

Our joined efforts here are key to promoting regionalism and play an integral role in the further development of this region. It is my honor to serve your community and to continue to diligently meet the varying needs of all of Cuyahoga County.

Respectfully submitted,

A handwritten signature in blue ink, appearing to read 'Bonita G. Teeuwen', is written over a horizontal line.

Bonita G. Teeuwen, P.E.
Director of Public Works

6100 West Canal Road · Valley View, Ohio 44125
(216) 443-8211 · (216) 443-8276 Fax · Ohio Relay Service (TTY) 711

OVERVIEW

Originally established in 1919, the Sanitary Engineering Division was created to administer authority in matters of wastewater, storm water, and water supply management. In 2011, the Sanitary Engineering Division (formerly CCSE) became a part of the Cuyahoga County Department of Public Works, and now operates under the County Executive Ed FitzGerald.

Our focus on needs assessment, engineering feasibility studies, maintenance and repair of aging sewer lines, as well as other infrastructure-related issues, has a direct impact on commercial and residential development, job creation, and expanded tax base in the communities served by the Department of Public Works.

This Division is a major source of information and guidance that mayors, municipal engineers, and service directors rely on when making infrastructure decisions within their community. The Division has considerable experience in the maintenance of sanitary and storm sewer lines, many of which are old and have performed beyond their design life. Moreover, the Division has much expertise with respect to wastewater treatment plants and pump stations.

Public Works directs an operation which now encompasses more than 33 communities and maintains nearly 1,200 miles of sanitary sewers, treats millions of gallons of wastewater, operates 46 sewage-pumping stations, and maintains 3 wastewater treatment plants throughout Cuyahoga County. The Division also has agreements with municipal corporations for the establishment, operation, and maintenance of sanitary sewers.

Working in cooperation with the Ohio Environmental Protection Agency (Ohio EPA), the Northeast Ohio Regional Sewer District (NEORS), the City of Cleveland Division of Water, and the Cuyahoga County Board of Health; the Division manages a Capital Improvement Program (CIP) used for upgrading or replacing the existing infrastructure and for expanding sewers to non-sewered areas. The CIP includes information about project type, location, funding, preliminary engineering, and final plan development.

All operating funds for the Division are created through fees and assessments. The Division does not receive a subsidy through the County General Fund; however, it does use the General Fund's bonding capacity.

The Department of Public Works has been in the forefront of regionalism efforts, and with services provided to over half of the 59 communities within county lines, the office continues to maintain reasonable rates and improved infrastructure throughout the area.

MISSION STATEMENT

“To provide and maintain a safe and efficient regional infrastructure system for residents, employees, businesses and visitors through innovative solutions, high-quality workmanship and superior customer service.”



- Reduce the number of flooded basements by decreasing mainline blockage, minimize the inflow/infiltration of storm water in the sanitary system, and evaluate the structural integrity of entire sewerage system;
- Increase efficiency to reduce operating cost and produce more available funding for capital improvement projects;
- Operate wastewater treatment plants in compliance of National Pollution Discharge Elimination System (NPDES) permit parameters;
- Provide guidelines for new construction through use of *Uniform Standards for Sewerage Improvements*;
- Review and approve new improvement plans; and
- Provide infrastructure needs assessment for communities.

- Capital improvement planning
- Plan review and approval of all new sewer improvements within the County sewer districts
- Construction management
- Geographic information systems (GIS)
- Project design
- Engineering analysis (required for operation of facilities and the collection system)
- Operational checks (EPA permit compliance)

- Operation and maintenance of wastewater treatment plants and pumping stations
- Inspection of new wastewater collection and transportation systems within County sewer districts
- Issuance of connection permits
- Issuance of sewer builders' licenses
- Development, implementation and monitoring of safety guidelines

GOALS OF THE PUBLIC WORKS DEPARTMENT

ENGINEERING SERVICES

FACILITIES OPERATION & MAINTENANCE



ADMINISTRATIVE SUPPORT SERVICES

In addition to the extensive maintenance services we offer, our administrative support includes the following:

- Capacity, Management, Operation, and Maintenance (CMOM) Program as regulated through the US EPA to help prevent Sanitary Sewer Overflows (SSO's)
- Maps and spatial analysis for design and service management
- Geographical information systems for development and implementation
- Record keeping, as-built plans and test tee location
- Fiscal oversight of annual operating budget and capital improvement budget
- Grant and loan administration
- Licensing and permitting of over 200 contractors
- Inspection of sewers and project oversight
- Design and review of construction projects and analysis of field testing

Maintenance Services

Mainline
Sewer
Cleaning

Lateral &
Mainline
Sewer
Repair

Lateral
Cleaning
(From
Test Tee
to
Mainline)

Smoke
& Dye
Testing

Digital
Video
Inspection

Treatment
Plant &
Pump
Station
Maintenance
&
Operation

24-Hour
Call
Out
Services

SUMMARY OF SERVICE DELIVERY

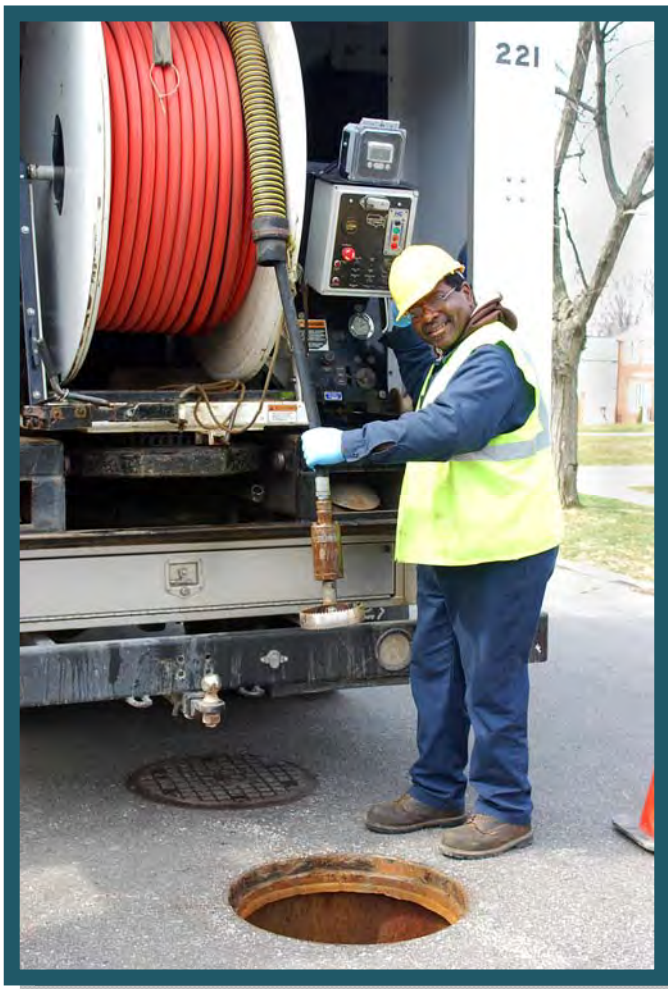
- High-pressure jetting of street sewer from the right-of-way, approximately 1,200 miles of sanitary sewers.
- Point repairs as well as capital improvement projects
- Cleaning of line from right-of-way to the house, approximately 7,500 houses annually
- Inflow and Infiltration testing and solutions
- Televising of lines for identifying possible failures or deficiencies
- Licensed wastewater operators to monitor the condition of the treatment plants and pumping stations, as well as implement upgrades and preventative maintenance.
- Emergency maintenance and 24- hour on-call team for resident issues

INTERNAL STRUCTURE OF THE DIVISION

SEWER MAINTENANCE

The Sewer Maintenance section provides a full-service program to clean, evaluate, maintain structural integrity, and perform construction on sanitary and storm sewers. The general program consists of cleaning all sanitary sewers every three years and televising all sanitary sewers every six years, which is well within the NEORSD's

"Best Management Practices" guidelines.



The Division cleans approximately 7,500 house connections annually. The goal is to reduce basement flooding through inflow/infiltration reduction, reduce blocked mains, clean service connections and maximize sewer capacity.

The Department of Public Works has an Inflow and Infiltration section within the Lateral Service Department. This section uses various tools; flow meters to monitor sanitary mainlines during both dry and wet weather conditions as well as measuring wastewater flows coming into treatment plants and water flows in storm sewers. Smoke and dye testing can isolate areas affected by excessive volumes of clean runoff into the sanitary sewer system. When used

in unison, meters can detect extraneous water while smoke and dye testing can identify illegal downspout connections. Meters can also detect rainwater infiltrating through the ground and into sanitary sewers through bad pipe joints and cracked or broken pipe.

ENGINEERING

The Engineering Section provides technical services to its customers including capital project planning, grant and loan administration, design engineering, construction management, and inspection of sanitary and storm sewers, pump stations, and wastewater treatment facilities.

This section oversees capital construction projects that include financing in the forms of grants and loans obtained from the State of Ohio, as well as saving through maintenance efficiencies. These funds are utilized for lining, repairing, replacing, and rehabilitating existing sanitary and storm sewerage systems.

The Engineering Section reviews design plans for approximately eighty-five construction projects per year on behalf of thirty-three communities. It also coordinates and analyzes the results of field testing and flow monitoring in order to detect and eliminate storm water inflow/ infiltration from the sanitary sewer system. In addition, the Engineering Section maintains files and legal libraries of pertinent federal, state, and local regulations and renders technical assistance to other sections regarding these regulations.



INSPECTION/PERMITS

The Inspection and Permit section operates in 33 suburban communities. This section's major functions include: the licensing, bonding and permitting over 200 contractors, construction inspection of sanitary and storm sewers; which includes: residential, commercial, and industrial; along with the inspection of wastewater treatment plants and pumping stations. This section also maintains the permanent records for sewerage construction projects and provides information to all County departments, engineering consulting firms, contractors, and the public.

ENVIRONMENTAL SERVICES

■ Wastewater Treatment Plants

The County operated 3 wastewater treatment package plants. These facilities treated 147 million gallons of wastewater per year. The standards are set for each facility by the Ohio EPA through the National Pollution Discharge Elimination System (NPDES) permit. The support staff consists of wastewater operators licensed by the Ohio EPA who monitor the conditions of the plants and make necessary process adjustments to meet the NPDES permit.



■ Pumping Stations

The County operates 46 pumping stations throughout the 33 service communities. A Supervisory Control and Data Acquisition (SCADA) system monitors 36 of the stations. The system provides alarms and operational status through a central computer that is accessed from a remote computer providing 24 hour monitoring. It is our goal to upgrade all County operated pump stations and to expand the SCADA system to all new projects. Our maintenance staff consists of professional mechanics enabling us to repair most problems in-house, therefore keeping costs down. Their preventive maintenance program and dedication to the job has reduced emergency call-outs and overflows.

ENVIRONMENTAL SERVICES, continued

■ Capacity, Management, Operation, and Maintenance Program (CMOM)

The CMOM Program is a set of “best management practices” that have been developed by the industry and are applied over the life cycle of the collection system. It is these general practices that are taken into consideration when a system is being reviewed by a Federal or State agency, and improvement recommendations are set forth by such agency based on these items, as well.

The United States EPA contacted our agency in July of 2009 to meet with 14 communities concerning the status of sanitary sewer overflows (SSO's). To date, 16 communities within our county lines have been approved by the EPA, with 8 others awaiting approval. In an attempt to become more proactive in the prevention of SSO's, this agency has taken a stance to further train the staff and enforce this program.



INFORMATION TECHNOLOGY

The Information Technology (IT) Section provides computer and analytical support to internal end users and communities within the Department. It is responsible for the design, implementation and maintenance of geographical map-based and other relational database systems, as well as guiding data acquisition tasks throughout the Division. In addition, the computerized mapping program catalogues the location of sewer systems and performs analysis on spatial data. This ability supports the planning, designing, and maintenance of sewer systems, as well as ensuring user fees are appropriately assessed and collected. Furthermore, the mapping program now features attached permits and engineering drawings.

In 2011 the IT Section installed an image server to store TV inspection videos, photos, permits and engineering drawings for rapid retrieval. The IT Section also initiated field-testing of the new Work-order Management System; installed a wireless network with wi-fi adapters in our TV Inspection vehicles to aid in the downloading of inspection data; and began scanning the archive of paper records from our TV Inspection and Lateral Services Department.



FINANCE SECTION

The Finance Section provides support services to various units within the Public Works Department. Automated cost accounting programs and systems ensure accurate tracking and monitoring of expenditures, revenues, rate structures and other data that provide planning for capital projects and operational budgets. All systems and programs are operated under generally accepted accounting principles.

The Finance Section oversees an annual sanitary operating budget in excess of \$14 million and an annual capital improvement budget of \$5- \$10 million. The capital improvement plan is administered by this section and revenues, as well as expenditures, are approved and monitored for each individual improvement. Finance is responsible for accounts receivable, accounts payable, cost accounting, audit, inventory control, vehicle inventory management, capital project financing, purchasing, and the assessment of users fees.

APPENDIX DESCRIPTION*

The following appendices contain a variety of reports representing the services provided to communities in 2011. The Public Works Department follows a manhole-to-manhole, sewer segment-based accounting method for Jet Cleaning and TV Inspection maintenance services. The first two reports contain listings of the collection system cleaned and inspected for the year by street. The following report discloses the more significant projects submitted and reviewed by the Permit and Engineering sections during the year for your community. Smaller review services such as house connections or ongoing, intermittent review of large multi-phase projects spanning several years of development are not shown on this report. The final appendices are from the Finance and Billing section. These reports provide a breakdown of operating expenses, capital project costs contracted for the community, as well as additional services including house visits, inflow/infiltration studies, and construction activity. A map is enclosed showing areas where collection system mainlines were Jet cleaned and TV inspected, construction crew activity locations, house visits and if house lateral connections needed to be cleaned or inspected. The CD provided contains a PDF file of the map, which can be copied for distribution. Adobe Corporation's free reader software is required and can be downloaded from www.adobe.com.

* Please note: These appendix reports are provided only to communities for which the specific service is provided by the Department of Public Works. For example, if regularly scheduled mainline cleaning service is not provided for your community, a map was not produced. Similarly, if project review or capital project management services are not provided to your community, then there is no corresponding report. Certain communities are provided limited maintenance on county improvement mainlines and/or facilities only.



6100 West Canal Road, Valley View, OH 44125 | ph 216.443.8201 | fx 216.443.8276

publicworks.cuyahogacounty.us | PublicWorks@cuyahogacounty.us

Section A-1

Community Streets Cleaned*

* No service provided if section is blank

Collection System Jet Cleaning - 2011

Middleburg Heights

STREET	NUMBER OF SEGMENTS	JET FT
ALAN PARKWAY	10	2,420
ALDESYDE DRIVE	4	919
ALDESYDE EASEMENT	2	345
ARROWHEAD TRAIL	8	1,662
BAGLEY	1	21
BAGLEY EASEMENT	2	318
BAGLEY ROAD	1	143
BALDWIN CREEK	22	4,609
BALDWIN CREEK DRIVE	1	325
BARTHOLOMEW DRIVE	8	1,742
BEACHDELL DRIVE	3	371
BELFAIR DRIVE	6	1,243
BELMEADOW DRIVE	5	867
BENEDICT COURT	7	2,026
BENNINGTON BOULEVARD	10	1,806
BIG CREEK EASEMENT	2	290
BIG CREEK PARKWAY	19	5,008
BLUE SPRUCE OVAL	1	235
BRIARCLIFF PARKWAY	1	200
BROOKSTONE DRIVE	3	647
BROOKSTONE TRAIL	2	600
BUNKER HILL	6	1,494
BUNKER HILL ROAD	2	600
BYRON BOULEVARD	7	1,599
BYRON EASEMENT	1	280
CANYON CIRCLE	1	340
CHEROKEE EASEMENT	1	361
CHEROKEE TRAIL	31	8,858
CHIPPEWA EASEMENT	2	359
CHIPPEWA TRAIL	10	2,664
CLAREMONT	18	3,148
CONCORD TRAIL	7	1,311
COTTONWOOD OVAL	1	207
CRANBROOK CIRCLE	1	240
DELAWARE	6	1,407
DOGWOOD CIRCLE	3	626
EAST BAGLEY	6	1,935
EASTLAND	9	2,523

Collection System Jet Cleaning - 2011

Middleburg Heights

STREET	NUMBER OF SEGMENTS	JET FT
EDEN LANE	2	284
ELISE DRIVE	2	589
ELMDALE	11	2,299
ENGLE	20	5,200
ENGLE EASEMENT	2	237
ENGLE LAKE DRIVE	5	953
ENGLE LAKE EASEMENT	2	547
ENGLEWOOD DRIVE	11	2,595
ERWIN COURT	1	214
FAIRWEATHER DRIVE	6	1,319
FIRST STREET	1	200
FOREST OVAL	4	725
FRANKE	6	1,647
FRY	18	5,275
FRY EASEMENT	3	688
GALEMORE DRIVE	6	1,775
GERALD DRIVE	16	2,881
HEATHER LANE	12	2,571
HEMLOCK LANE	1	348
HICKOX BOULEVARD	9	2,542
HINSDALE COURT	3	177
HUMPHREY	1	303
INDIAN CREEK DRIVE	27	5,708
IVY COURT	1	264
JAMES DRIVE	6	1,377
JEFFERSON PARK	7	1,583
KINGMAN DRIVE	1	402
KIWANIS DRIVE	5	1,181
KLEIN DRIVE	5	1,417
KLEIN EASEMENT	2	370
LAKE ABRAM DRIVE	2	718
LARES LANE	2	329
LAUREL TRACE	1	300
LEXINGTON GREEN	5	1,268
LOGAN DRIVE	2	570
MARKAL DRIVE	1	301
MAUREEN DRIVE	4	1,065
MIDDLEBROOK BOULEVARD	23	6,344

Collection System Jet Cleaning - 2011

Middleburg Heights

STREET	NUMBER OF SEGMENTS	JET FT
MIDDLEBROOK EASEMENT	1	57
MIDDLEBURG HEIGHTS BOULEVARD	5	1,410
MOHAWK TRAIL	13	3,246
MONTGOMERY	2	306
MORNINGSIDE	6	1,067
NETHERSOLE DRIVE	1	100
NEWTON	25	4,475
OLD PLEASANT VALLEY	15	3,281
OLD PLEASANT VALLEY ROAD	3	870
PARKLAWN	1	350
PAULA DRIVE	18	3,630
PAWNEE EASEMENT	2	667
PAWNEE TRAIL	16	4,226
PEARL ROAD	11	2,014
PECAN OVAL	1	211
PINE VALLEY TRAIL	1	165
PINEVIEW COURT	3	765
PRINCETON PLACE	2	566
RAMONA DRIVE	6	1,299
ROSBOUGH DRIVE	4	878
ROSBOUGH EASEMENT	1	80
SANDALHAVEN DRIVE	6	1,790
SARATOGA	8	1,154
SCENIC PARK OVAL	2	548
SENECA TRAIL	1	273
SHAWNEE EASEMENT	6	2,540
SHAWNEE TRAIL	9	2,722
SHELBURNE DRIVE	2	473
SHELDON EASEMENT	3	1,061
SMITH	15	3,053
SMITH ROAD	3	586
SPRAGUE EASEMENT	5	1,082
SPRINGDALE DRIVE	6	1,155
STONYBROOK DRIVE	1	314
STROUD	6	1,773
SUNRISE OVAL	1	380
TIMBER LANE	5	755
TRENTON TRAIL	13	3,102

Collection System Jet Cleaning - 2011

Middleburg Heights

STREET	NUMBER OF SEGMENTS	JET FT
UHLIN DRIVE	7	2,000
UHLIN EASEMENT	9	3,244
WEBSTER	1	58
WENDY	2	461
WENGATZ DRIVE	3	853
WENGATZ EASEMENT	1	350
WEST 130 STREET	6	1,440
WEST 130TH	12	2,785
WEST 130TH EASEMENT	3	1,028
WHITE OAK CIRCLE	1	104
WHITEDOVE LANE	1	176
WILLIAMSBURG COURT	10	2,503
WINONA CIRCLE	3	431
WOOD CREEK DRIVE	7	1,230
YORKTOWN LANE	3	922
Grand Total:	764	180,324

Section A-2

Community Streets Inspected*

* No service provided if section is blank

Collection System TV Inspection - 2011

Middleburg Heights

STREET	NUMBER OF SEGMENTS	TV FT
ALAN PARKWAY	11	2,859
ALDESYDE DRIVE	4	927
ALDESYDE EASEMENT	2	282
ARROWHEAD TRAIL	8	1,672
BAGLEY ROAD	2	160
BEACHDELL DRIVE	2	352
BELFAIR DRIVE	6	1,248
BELMEADOW DRIVE	5	881
BENEDICT COURT	10	2,921
BENNINGTON BOULEVARD	9	1,547
BIG CREEK PARKWAY	47	10,823
BROOKSIDE PARKWAY	1	355
BUNKER HILL	6	1,327
BUNKER HILL ROAD	2	233
BYRON BOULEVARD	14	3,230
BYRON EASEMENT	4	926
CHEROKEE TRAIL	24	5,249
CHIPPEWA TRAIL	1	246
CLAREMONT	6	1,128
COMSTOCK CIRCLE	1	255
CRAIGMERE	2	467
CRAIGMERE DRIVE	6	1,678
CRANBROOK CIRCLE	1	241
EAST BAGLEY	1	340
EAST BAGLEY ROAD	3	712
EASTLAND	1	360
EDEN LANE	1	144
ELISE DRIVE	2	590
ELMDALE	17	3,968
ENGLE ROAD	1	316
ENGLEWOOD DRIVE	12	2,972
FAIRWEATHER DRIVE	6	1,325
FARNUM	10	2,372
FOREST OVAL	5	1,018
FOWLES	1	290
FOWLES ROAD	1	147
FRY	1	383
GALEMORE DRIVE	7	2,094

Collection System TV Inspection - 2011

Middleburg Heights

STREET	NUMBER OF SEGMENTS	TV FT
GERALD DRIVE	13	2,209
GRANT	2	453
GRANT BOULEVARD	4	688
HEATHER LANE	1	188
HICKOX BOULEVARD	6	1,789
INDIAN CREEK	2	340
INDIAN CREEK DRIVE	19	4,195
ISAAC DRIVE	2	543
ISSAC DRIVE	1	263
IVY LANE	1	319
JAMES DRIVE	2	375
JEFFERSON PARK	8	1,881
KINGMAN DRIVE	1	405
KIWANIS DRIVE	8	1,479
KLEIN DRIVE	10	2,870
KLEIN EASEMENT	3	545
LAKE ABRAM DRIVE	1	361
LANIER DRIVE	4	1,150
LEXINGTON GREEN	3	677
LOGAN DRIVE	2	575
LUCERNE	3	765
LUCERNE DRIVE	11	2,198
MALLARD COVE	2	499
MARKAL DRIVE	4	1,016
MIDDLEBROOK BOULEVARD	19	4,938
MOHAWK TRAIL	13	2,986
MONTGOMERY	2	313
MORNINGSIDE	4	822
NARRAGANSETT OVAL	1	49
NETHERSOLE DRIVE	9	1,723
NEWTON	22	3,900
NORMANDIE BOULEVARD	10	2,475
OLD OAK BOULEVARD	4	1,145
OLD PLEASANT VALLEY	10	2,831
OPV EASEMENT	1	101
PARKLAWN	6	1,758
PAULA DRIVE	18	3,532
PAULA EASEMENT	2	256

Collection System TV Inspection - 2011

Middleburg Heights

STREET	NUMBER OF SEGMENTS	TV FT
PEARL ROAD	5	1,417
PINEVIEW COURT	6	1,540
RAGALL PARKWAY	32	6,843
RAMONA DRIVE	6	1,307
REVERE CIRCLE	5	1,250
ROBERT DRIVE	5	1,377
ROSBOUGH DRIVE	3	653
SANDALHAVEN DRIVE	6	1,808
SCENIC PARK OVAL	2	555
SENECA TRAIL	9	1,457
SHAWNEE EASEMENT	8	3,502
SHAWNEE TRAIL	9	2,731
SHELDON	1	405
SHELDON EASEMENT	3	1,077
SMITH	22	3,925
SMITH ROAD	4	497
SPRAGUE EASEMENT	3	775
SPRINGDALE DRIVE	6	1,174
STONYBROOK DRIVE	3	678
STROUD	6	1,760
TIMBER LANE	5	755
TRENTON TRAIL	15	3,530
UHLIN	1	15
UHLIN DRIVE	6	1,625
UHLIN EASEMENT	11	2,802
WEBSTER	1	189
WENDY	2	247
WENGATZ	2	285
WENGATZ DR	3	814
WENGATZ DRIVE	5	1,081
WENGATZ EASEMENT	1	350
WEST 130 STREET	1	18
WEST 130TH STREET	5	1,433
WHITEDOVE LANE	3	766
WILLIAMSBURG COURT	5	1,244
YORKTOWN LANE	3	926
Grand Total:	690	159,463

Section A-3

Projects Status*

* No service provided if section is blank

CCSE PROJECT REVIEWS

MUNICIPALITY MIDDLEBURG HEIGHTS

PROJECT 11-009 MCDONALD'S SITE RECON. 18070 BAGLEY RD.

STAGE 1 MCDONALD'S SITE RECON. 18070 BAGLEY RD.

Review Date	Approved	Revise	Comments
03-MAR-11	N	N	THIS DATE TWO SETS PLANS RECEIVED - LOGGED IN AND TO T. ATHERTON PER R. SAKR
03-MAR-11	N	N	STAGE SUBMITTED
06-MAY-11	N	N	THIS DATE TWO SETS PLANS RECEIVED - LOGGED IN AND TO J. KLINE
10-MAY-11	N	N	THIS DATE SIX SETS PLANS RECEIVED - LOGGED IN AND TO J. KLINE
11-MAY-11	Y	N	THIS DATE PLANS APPROVED - THREE SETS MAILED TO ERIC C. KRAMER AT BOHNING & ASSOCIATES, 7979 HUB PARKWAY, VALLEY VIEW 44125

PROJECT 11-027 KEY BANK

STAGE 1 KEY BANK MIDDLEBURG HTS

Review Date	Approved	Revise	Comments
15-JUN-11	N	N	STAGE SUBMITTED

PROJECT 11-030 PLEASANT VALLEY/BAGLEY (PID 10900)YORK TO PEARL RD

STAGE 1 PLEASANT VALLEY/BAGLEY (PID 10900) YORK TO PEARL R

Review Date	Approved	Revise	Comments
27-JUN-11	N	N	STAGE SUBMITTED
13-MAR-12	N	Y	On 2/16/12 review comments sent to Tom Gabanic, the County's Project Manager, for transfer to the design consultant.

PROJECT 11-036 INTERLAKE STEAMSHIP HQ

STAGE 1 INTERLAKE STEAMSHIP HQ

Review Date	Approved	Revise	Comments
25-JUL-11	N	N	STAGE SUBMITTED
25-JUL-11	N	N	THIS DATE SIX SETS PLANS RECEIVED - LOGGED IN AND TO W. SCHNEIDER
04-AUG-11	N	N	THIS DATE RECEIVED ONE SET REVISED PLANS, ONE SET PLUMBING PLANS, ONE SET STORM/SANITARY CALCULATIONS
15-AUG-11	N	Y	THIS DATE FIVE (5) SETS PLANS RECEIVED - LOGGED IN AND TO J. KLINE
22-AUG-11	Y	N	PLANS APPROVED 8/19/2011 BY W. SCHNEIDER - 8/22/2011 TWO SETS PLANS SENT TO ANDREW E. WRIGHT OF THORSON BAKER & ASSOC., 3030 W. STREETSBORO ROAD, RICHFIELD, OHIO 44286
28-SEP-11	Y	Y	THIS DATE ONE (1) SET PLANS PLUS ONE LETTER TO STUART SAYLER (PLUS THREE (3) "APPROVED AS NOTED" SETS OF PLANS LAST REVISED 9/21/11 AND THE THREE-SIDED CULVERT SHOP DRAWINGS
14-OCT-11	N	Y	THIS DATE SIX (6) REVISED SETS RECEIVED FROM ANDREW E. WRIGHT-THORSON BAKER & ASSOCIATES. CITY ENGINEER SIGNATURE NOT ON PLANS - J. KLINE ADVISED SHE WAS RECEIVING A LETTER FROM MICHAEL MACKAY VIA E-MAIL STATING THAT HE HAD APPROVED PLANS AND THAT LETTER WOULD SERVE AS HIS SIGNATURE. LETTER TO BE FOUND IN FILE.
26-OCT-11	Y	Y	ON THIS DATE SIX (6) SETS REVISED PLANS RECEIVED FROM BILL SCHNEIDEDR - IN MIDDLEBURG HEIGHTS WE ONLY INSPECT STORM-NOT APPROVE. TWO (2) OF THESE REVISED SETS ARE BEING SENT "AS IS" TO THE ENGINEER-ANDREW E. WRIGHT AT THORSON BAKER- THE CONTRACTOR WILL ALSO BE RECEIVING AN "AS IS" SET. OUR TWO INSPECTOR COPIES AND OUR OFFICE COPY WILL HAVE THE REVISED PAGES INSERTED INTO OUR ALREADY EXISTING PRE-APPROVED PLANS.

PROJECT 11-039 ENGLE RD. STORM SEWER IMPROV.

STAGE 1 ENGLE RD. STORM SEWER IMPROVEMENT

Review Date	Approved	Revise	Comments
12-AUG-11	N	N	STAGE SUBMITTED
12-AUG-11	N	N	THIS DATE SIX SETS PLANS RECEIVED THROUGH MAIL - LOGGED IN AND TO W. SCHNEIDER
16-AUG-11	N	N	PLANS MAILED BACK 8/16/11 PER R. SAKR BECAUSE THEY WERE NOT SIGNED BY CITY ENGINEER MICHAEL MACKAY.
23-AUG-11	N	N	THIS DATE PLANS RETURNED WITH CITY ENGINEER SIGNATURE ON SIX (6) SETS
25-AUG-11	Y	N	THIS DATE PLANS APPROVED BY W. SCHNEIDER - TWO (2) SETS SENT TO MICHAEL MACKAY AT MACKAY ENGINEERING AND SURVEYING CO., 7017 PEARL ROAD, CLEVELAND, 44130

PROJECT 11-043 MIDDLEBURG HEIGHTS KINGDOM HALL

STAGE 1 MIDDLEBURG HEIGHTS KINGDOM HALL

Review Date	Approved	Revise	Comments
13-SEP-11	N	N	STAGE SUBMITTED
13-SEP-11	N	N	THIS DATE SIX (6) SETS PLANS RECEIVED - LOGGED IN AND TO W. SCHNEIDER
27-OCT-11	Y	N	THIS DATE PLANS APPROVED BY W. SCHNEIDER - TWO SETS SENT TO MACKAY ENGINEERING AT 7017 PEARL ROAD, CLEVELAND, OHIO 44130

Section A-4

Service Program*

* No service provided if section is blank

City of Middleburg Heights

<u>Type</u>	<u>Community Total</u>
Sanitary Sewers	341,945 Feet
Manholes	1,606 (Approximately)

2011 Service Program

<u>Program</u>	<u>2011 Activity</u>
1) High Pressure Cleaning*	180,324 Feet
2) House Service	788 Calls
3) Television Inspection*	159,463 Feet
4) Construction Activities	129 Job(s)
5) Smoke and Dye Testing	180 Test(s)
6) Construction Permits Issued (Commercial)	6
(Residential)	19
7) Plan Review	6 Plan(s)
8) Capital Projects	2,174 Feet (New Sewer Lines Inspected)

*Information includes footages for sanitary and storm sewers.

Section A-5

Community Operating Expenses

City of Middleburg Heights

2011 Operating Expenses

<u>Activity</u>	<u>Cost</u>
1. Maintenance of Sanitary Sewerage Systems	\$668,574
2. Pump Station Operation and Maintenance	\$ 0
3. Waste Water Treatment Plant Maintenance	\$ 0
4. Engineering and/or Inspection	\$46,301
5. Capital Expenses (See Section A-6 if any)	\$10,874
6. Sanitary Overhead	\$33,164
Total Expenses:	\$758,913

Section A-6

Community Capital Expenses

* No service provided if section is blank

City of Middleburg Heights

2011 Capital Expenses

Infrastructure Maintenance **\$ 10,874**

Total Capital Expenses: **\$ 10,874**

CONTACT INFORMATION

Address

Cuyahoga County Department of Public Works
 6100 West Canal Road
 Valley View, OH 44125
 Email: Publicworks@cuyahogacounty.us
 Website: Publicworks.cuyahogacounty.us

Bonita G. Teeuwen, P.E..... Director of Public Works
 Douglas L. Dillon, P.E., P.S. Design & Construction Administrator
 Michael W. Dever, MPA.....Maintenance Administrator
 Michael W. Chambers, CPAFiscal Officer
 Bryan J. Hitch..... Sewer Maintenance Administrator

<i>Dispatch Office</i> (216) 443-8201	<i>Dispatch Email</i> PWDDispatch@cuyahogacounty.us
<i>Administration</i> (216) 443-8215	<i>Inspection & Permits</i> (216) 443-8211
<i>Engineering</i> William Schneider, P.E, Chief Engineer (216) 443-8205	<i>Sewer Maintenance</i> Gary Green, Senior Supervisor (216) 443-8225
<i>Lateral Services (House Crews)</i> John Gribble, Supervisor (216) 443-8227	<i>Inflow & Infiltration</i> Suzanne Britt, Supervisor (216) 443-3533
<i>Construction</i> Mitch Holt, Supervisor (216) 443-8229	<i>Televised Inspection</i> Todd Swindell, Supervisor (216) 443-8224
<i>Sewer Jetting</i> Guy Swindell, Supervisor (216) 443-8226	<i>Pump Station Operations</i> William Applegarth, Supervisor (216) 443-8233