



2012 ANNUAL REPORT

Prepared For The:

CITY OF BEACHWOOD



CUYAHOGA COUNTY
DEPARTMENT OF PUBLIC WORKS

TABLE OF CONTENTS

Introduction.....I

Mission Statement & Overview.....2

Appendix Description.....II

Community Streets Cleaned.....A-1

Community Streets Inspected.....A-2

Project Status.....A-3

Service Program.....A-4

Community Operating Expenses.....A-5

Community Capital Expenses.....A-6

Contact Information.....Rear Folio



CUYAHOGA COUNTY DEPARTMENT of PUBLIC WORKS

March 31, 2013

The Honorable Merle S. Gorden
City of Beachwood
25325 Fairmont Boulevard
Beachwood, Ohio 44122

Dear Mayor Gorden:

It is with great pride that I present to you the 2012 Annual Report for the Cuyahoga County Department of Public Works Sanitary Service. This report contains a detailed overview of the components that bring together the agency, information on work completed within your municipality, including operating expenses over the past year. As in previous reports, we have included maps displaying the following: the cleaning and inspection of system mainlines, locations of construction activity, inflow and infiltration areas of study, house visits, and the cleaning and inspection of lateral connections, as it pertains to the service in which we provide to you.

This year has been a dynamic one for Cuyahoga County. We have implemented many changes to improve our department and this can be felt by the communities we service. We are continuously striving to incorporate new and ground breaking practices into the way we perform each day, and I am confident that this agency has the tools to offer you the highest level of both customer service and innovative technologies. The Charter's creation of the Department of Public Works has afforded us the ability to utilize a larger and more diverse work force, and thus be able to better dispatch staff to your community during high-volume rain events and natural disasters. It is our obligation to provide the most effective level of water pollution control possible.

Our joined efforts here are key to promoting regionalism and play an integral role in the further development of this region. It is my honor to serve your community and to continue to diligently meet the varying needs of all of Cuyahoga County.

Respectfully submitted,

A handwritten signature in blue ink, appearing to read "Bonita G. Teeuwen".

Bonita G. Teeuwen, P.E.
Director of Public Works

2100 Superior Viaduct · Cleveland, Ohio 44113
(216) 348-3800 · (216) 348-3896 Fax · Ohio Relay Service (TTY) 711

OVERVIEW

Originally established in 1919, the Sanitary Engineering Division was created to administer authority in matters of wastewater, storm water, and water supply management. In 2012, the Sanitary Engineering Division (formerly CCSE) became a part of the Cuyahoga County Department of Public Works, and now operates under the County Executive Ed FitzGerald.

Our focus on needs assessment, engineering feasibility studies, maintenance and repair of aging sewer lines, as well as other infrastructure-related issues, has a direct impact on commercial and residential development, job creation, and expanded tax base in the communities served by the Department of Public Works.

This Division is a major source of information and guidance that mayors, municipal engineers, and service directors rely on when making infrastructure decisions within their community. The Division has considerable experience in the maintenance of sanitary and storm sewer lines, many of which are old and have performed beyond their design life. Moreover, the Division has much expertise with respect to wastewater treatment plants and pump stations.

Public Works directs an operation which now encompasses more than 34 communities and maintains nearly 1,200 miles of sanitary sewers, treats millions of gallons of wastewater, operates 51 sewage-pumping stations, and maintains 2 wastewater treatment plants throughout Cuyahoga County. The Division also has agreements with municipal corporations for the establishment, operation, and maintenance of sanitary sewers.

Working in cooperation with the Ohio Environmental Protection Agency (Ohio EPA), the Northeast Ohio Regional Sewer District (NEORS), the City of Cleveland Division of Water, and the Cuyahoga County Board of Health; the Division manages a Capital Improvement Program (CIP) used for upgrading or replacing the existing infrastructure and for expanding sewers to non-sewered areas. The CIP includes information about project type, location, funding, preliminary engineering, and final plan development.

All operating funds for the Division are created through fees and assessments. The Division does not receive a subsidy through the County General Fund; however, it does use the General Fund's bonding capacity.

The Department of Public Works has been in the forefront of regionalism efforts, and with services provided to over half of the 59 communities within county lines, the office continues to maintain reasonable rates and improved infrastructure throughout the area.

MISSION STATEMENT

“To provide and maintain a safe and efficient regional infrastructure system for residents, employees, businesses and visitors through innovative solutions, high-quality workmanship and superior customer service.”



- Reduce the number of flooded basements by decreasing mainline blockage, minimize the inflow/infiltration of storm water in the sanitary system, and evaluate the structural integrity of entire sewerage system;
- Increase efficiency to reduce operating cost and produce more available funding for capital improvement projects;
- Operate wastewater treatment plants in compliance of National Pollution Discharge Elimination System (NPDES) permit parameters;
- Provide guidelines for new construction through use of *Uniform Standards for Sewerage Improvements*;
- Review and approve new improvement plans; and
- Provide infrastructure needs assessment for communities.

- Capital improvement planning
- Plan review and approval of all new sewer improvements within the County sewer districts
- Construction management
- Geographic information systems (GIS)
- Project design
- Engineering analysis (required for operation of facilities and the collection system)
- Operational checks (EPA permit compliance)

- Operation and maintenance of wastewater treatment plants and pumping stations
- Inspection of new wastewater collection and transportation systems within County sewer districts
- Issuance of connection permits
- Issuance of sewer builders' licenses
- Development, implementation and monitoring of safety guidelines

GOALS OF THE PUBLIC WORKS DEPARTMENT

ENGINEERING SERVICES

FACILITIES OPERATION & MAINTENANCE



ADMINISTRATIVE SUPPORT SERVICES

In addition to the extensive maintenance services we offer, our administrative support includes the following:

- Capacity, Management, Operation, and Maintenance (CMOM) Program as regulated through the US EPA to help prevent Sanitary Sewer Overflows (SSO's)
- Maps and spatial analysis for design and service management
- Geographical information systems for development and implementation
- Record keeping, as-built plans and test tee location
- Fiscal oversight of annual operating budget and capital improvement budget
- Grant and loan administration
- Licensing and permitting of over 200 contractors
- Inspection of sewers and project oversight
- Design and review of construction projects and analysis of field testing

Maintenance Services

Mainline
Sewer
Cleaning

Lateral &
Mainline
Sewer
Repair

Lateral
Cleaning
(From
Test Tee
to
Mainline)

Smoke
& Dye
Testing

Digital
Video
Inspection

Treatment
Plant &
Pump
Station
Maintenance
&
Operation

24-Hour
Call
Out
Services

SUMMARY OF SERVICE DELIVERY

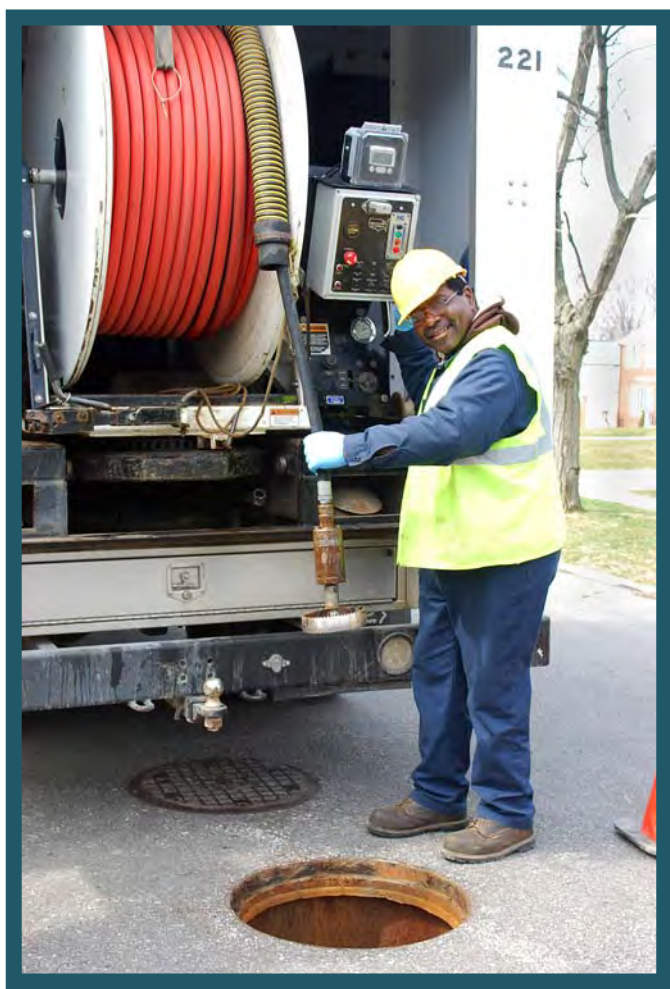
- High-pressure jetting of street sewer from the right-of-way, approximately 1,200 miles of sanitary sewers.
- Point repairs as well as capital improvement projects
- Cleaning of line from right-of-way to the house, approximately 7,500 houses annually
- Inflow and Infiltration testing and solutions
- Televising of lines for identifying possible failures or deficiencies
- Licensed wastewater operators to monitor the condition of the treatment plants and pumping stations, as well as implement upgrades and preventative maintenance.
- Emergency maintenance and 24-hour on-call team for resident issues

INTERNAL STRUCTURE OF THE DIVISION

SEWER MAINTENANCE

The Sewer Maintenance section provides a full-service program to clean, evaluate, maintain structural integrity, and perform construction on sanitary and storm sewers. The general program consists of cleaning all sanitary sewers every three years and televising all sanitary sewers every six years, which is well within the NEORSD's

"Best Management Practices" guidelines.



The Division cleans approximately 7,500 house connections annually. The goal is to reduce basement flooding through inflow/infiltration reduction, reduce blocked mains, clean service connections and maximize sewer capacity.

The Department of Public Works has an Inflow and Infiltration section within the Lateral Service Department. This section uses various tools; flow meters to monitor sanitary mainlines during both dry and wet weather conditions as well as measuring wastewater flows coming into treatment plants and water flows in storm sewers. Smoke and dye testing can isolate areas affected by excessive volumes of clean runoff into the sanitary sewer system. When used

in unison, meters can detect extraneous water while smoke and dye testing can identify illegal downspout connections. Meters can also detect rainwater infiltrating through the ground and into sanitary sewers through bad pipe joints and cracked or broken pipe.

ENGINEERING

The Engineering Section provides technical services to its customers including capital project planning, grant and loan administration, design engineering, construction management, and inspection of sanitary and storm sewers, pump stations, and wastewater treatment facilities.

This section oversees capital construction projects that include financing in the forms of grants and loans obtained from the State of Ohio, as well as saving through maintenance efficiencies. These funds are utilized for lining, repairing, replacing, and rehabilitating existing sanitary and storm sewerage systems.

The Engineering Section reviews design plans for approximately eighty-five construction projects per year on behalf of thirty-four communities. It also coordinates and analyzes the results of field testing and flow monitoring in order to detect and eliminate storm water inflow/ infiltration from the sanitary sewer system. In addition, the Engineering Section maintains files and legal libraries of pertinent federal, state, and local regulations and renders technical assistance to other sections regarding these regulations.



INSPECTION/PERMITS

The Inspection and Permit section operates in 34 suburban communities. This section's major functions include: the licensing, bonding and permitting over 200 contractors, construction inspection of sanitary and storm sewers; which includes: residential, commercial, and industrial; along with the inspection of wastewater treatment plants and pumping stations. This section also maintains the permanent records for sewerage construction projects and provides information to all County departments, engineering consulting firms, contractors, and the public.

ENVIRONMENTAL SERVICES

■ Wastewater Treatment Plants

The County operated 2 wastewater treatment package plants. These facilities treated 147 million gallons of wastewater per year. The standards are set for each facility by the Ohio EPA through the National Pollution Discharge Elimination System (NPDES) permit. The support staff consists of wastewater operators licensed by the Ohio EPA who monitor the conditions of the plants and make necessary process adjustments to meet the NPDES permit.



■ Pumping Stations

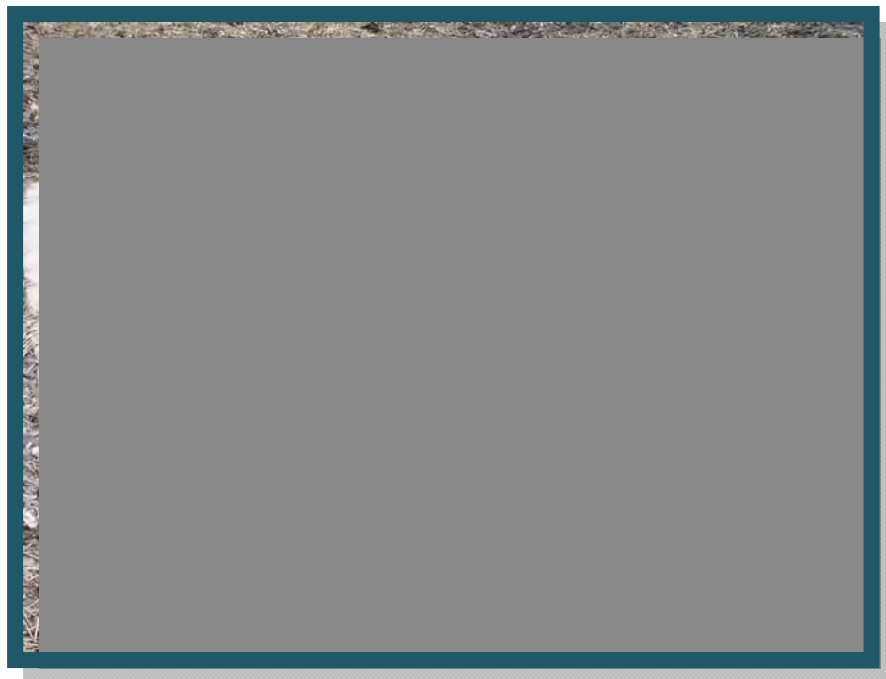
The County operates 51 pumping stations throughout the 34 service communities. A Supervisory Control and Data Acquisition (SCADA) system monitors 41 of the stations. The system provides alarms and operational status through a central computer that is accessed from a remote computer providing 24 hour monitoring. It is our goal to upgrade all County operated pump stations and to expand the SCADA system to all new projects. Our maintenance staff consists of professional mechanics enabling us to repair most problems in-house, therefore keeping costs down. Their preventive maintenance program and dedication to the job has reduced emergency call-outs and overflows.

ENVIRONMENTAL SERVICES, continued

■ Capacity, Management, Operation, and Maintenance Program (CMOM)

The CMOM Program is a set of “best management practices” that have been developed by the industry and are applied over the life cycle of the collection system. It is these general practices that are taken into consideration when a system is being reviewed by a Federal or State agency. Improvement and recommendations are provided by such agencies based on deficiencies identified in the sanitary sewer system.

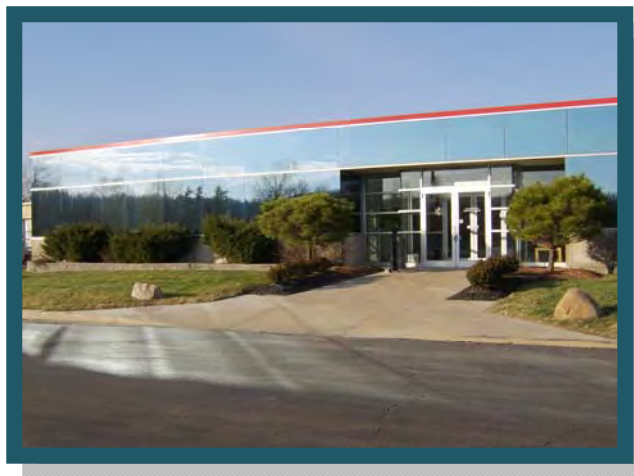
The United States EPA contacted our agency in July of 2009 in response to our CMOM's Report. In general, our Management, Maintenance and Operational processes meet the standard of the United States EPA. The main issue identified by them as a deficiency relate to any sanitary sewer overflows (SSO's). As we work with the communities to eliminate these overflows, the United States EPA has notified us that we have eliminated the noted deficiencies to our CMOM's Report and that we are in compliance with these "best management practices".



INFORMATION TECHNOLOGY

The Information Technology (IT) Section provides computer and analytical support to internal end users and communities within the Department. It is responsible for the design, implementation and maintenance of geographical map-based and other relational database systems, as well as guiding data acquisition tasks throughout the Division. In addition, the computerized mapping program catalogues the location of sewer systems and performs analysis on spatial data. This ability supports the planning, designing, and maintenance of sewer systems, as well as ensuring user fees are appropriately assessed and collected. Furthermore, the mapping program now features attached permits and engineering drawings.

In 2012 the IT Section completed 24 new computer installations according to the County's cyclical replacement policy. The IT Section also assisted in the removal of multiple personal printers in favor of centralized and efficient print centers; improved the engineers' access to the Geographic Information System and related analytical tools; and continues to assist internal departments with moving to a more digital, paperless record keeping system.



FINANCE SECTION

The Finance Section provides support services to various units within the Public Works Department. Automated cost accounting programs and systems ensure accurate tracking and monitoring of expenditures, revenues, rate structures and other data that provide planning for capital projects and operational budgets. All systems and programs are operated under generally accepted accounting principles.

The Finance Section oversees an annual sanitary operating budget in excess of \$14 million and an annual capital improvement budget of \$5- \$10 million. The capital improvement plan is administered by this section and revenues, as well as expenditures, are approved and monitored for each individual improvement. Finance is responsible for accounts receivable, accounts payable, cost accounting, audit, inventory control, vehicle inventory management, capital project financing, purchasing, and the assessment of users fees.

APPENDIX DESCRIPTION*

The following appendices contain a variety of reports representing the services provided to communities in 2012. The Public Works Department follows a manhole-to-manhole, sewer segment-based accounting method for Jet Cleaning and TV Inspection maintenance services. The first two reports contain listings of the collection system cleaned and inspected for the year by street. The following report discloses the more significant projects submitted and reviewed by the Permit and Engineering sections during the year for your community. Smaller review services such as house connections or ongoing, intermittent review of large multi-phase projects spanning several years of development are not shown on this report. The final appendices are from the Finance and Billing section. These reports provide a breakdown of operating expenses, capital project costs contracted for the community, as well as additional services including house visits, inflow/infiltration studies, and construction activity. A map is enclosed showing areas where collection system mainlines were Jet cleaned and TV inspected, construction crew activity locations, house visits and if house lateral connections needed to be cleaned or inspected. The DVD provided contains a PDF file of the map, which can be copied for distribution. Adobe Corporation's free reader software is required and can be downloaded from www.adobe.com.

* Please note: These appendix reports are provided only to communities for which the specific service is provided by the Department of Public Works. For example, if regularly scheduled mainline cleaning service is not provided for your community, a map was not produced. Similarly, if project review or capital project management services are not provided to your community, then there is no corresponding report. Certain communities are provided limited maintenance on county improvement mainlines and/or facilities only.



6100 West Canal Road, Valley View, OH 44125 | **ph** 216.443.8201 | **fx** 216.443.8276

publicworks.cuyahogacounty.us | PublicWorks@cuyahogacounty.us

Section A-1

Community Streets Cleaned*

* No service provided if section is blank

Collection System Jet Cleaning - 2012

Beachwood

STREET	NUMBER OF SEGMENTS	JET FT
BEACON	8	1,871
BELVOIR BOULEVARD	4	400
BRYDEN ROAD	24	5,227
CEDAR ROAD	4	813
CHAGRIN BOULEVARD	12	2,637
COMMERCE PARK	18	4,166
COMMERCE PARK EASEMENT	1	83
CONCORD	15	3,184
CONCORD EASEMENT	4	789
GREEN	4	591
HALBURTON	46	8,970
HALWORTH	8	2,332
HAVEL DRIVE	4	693
HERMITAGE ROAD	3	404
HIGHPOINT	4	855
LETCHWORTH ROAD	18	4,262
MERCANTILE	21	5,004
OLD GREEN ROAD	4	574
REXWAY DRIVE	3	640
RICHMOND ROAD	6	914
SOMERSET	5	708
SOUTH GREEN ROAD	10	1,589
SULGRAVE ROAD	1	350
WOODSIDE EASEMENT	2	510
WOODSIDE LANE	2	324
Grand Total:	231	47,890

Section A-2

Community Streets Inspected*

* No service provided if section is blank

Collection System TV Inspection - 2012

Beachwood

STREET	NUMBER OF SEGMENTS	TV FT
ALBERT LANE	4	757
BEACON	2	455
BEECHMONT CT	1	143
BRYDEN ROAD	22	4,656
BUCKHURST	1	150
CEDAR ROAD	5	1,660
COMMERCE PARK	11	2,565
CONCORD	8	1,205
CONCORD EASEMENT	2	173
DIANNE DRIVE	1	280
EAST SULGRAVE ROAD	7	790
GLENHILL EASEMENT	2	875
HALBURTON	22	3,761
HAVEL DRIVE	4	768
HAWTHORNE DRIVE	5	1,008
HAZELMERE ROAD	1	25
HIGHPOINT	3	810
LETCHWORTH ROAD	16	3,518
MELDON BOULEVARD	9	1,782
MERCANTILE	15	3,477
Grand Total:	141	28,858

Section A-3

Projects Status*

* No service provided if section is blank

CCSE PROJECT REVIEWS

MUNICIPALITY BEACHWOOD

PROJECT 12-001 GREEN RD(CR-14) 2012 OPERATIONS RESURFACING PROGRA

STAGE 1 GREEN RD(CR-14) 2012 OPERATIONS RESURFACING PROGRA

Review Date	Approved	Revise	Comments
18-JAN-12	N	N	STAGE SUBMITTED
18-JAN-12	N	N	THIS DATE ONE (1) SET PRELIMS RECEIVED FROM R. SAKER - LOGGED IN AND TO S. TOTH
21-MAY-12	N	N	Pre-construction meeting held. Attended by J. Kline. Burton-Scot, LLC to be the contractor. Work to start June 4, 2012. San. work involved adjustment of structures. Construction Dept. will be inspecting.

PROJECT 12-002 12" WATERMAIN EXT-8" SAN SWR EXT-HARVARD RD

STAGE 1 12" WATERMAIN EXT-8" SAN SWR EXT-HARVARD RD

Review Date	Approved	Revise	Comments
24-JAN-12	N	N	STAGE SUBMITTED
24-JAN-12	N	N	THIS DATE TWO (2) SETS PRELIMS RECEIVED - LOGGED IN AND TO JENNIFER KLINE
02-MAR-12	N	Y	Review Comments sent to Carl Frey Mar. 2, 2012. Comments were forwarded to Bob Gilboy @ Erdman Co. Bob Gilboy is the primary contact.
19-APR-12	N	N	Designer requested if stub could be added onto Eastern end of prop. san. line for future sewer. Our response: He could either add one at this time, or core into the manhole in the future. Factors to take into consideration: Time of future development, and pipe size, material, or depth.
09-MAY-12	N	N	THIS DATE SIX (6) SETS PLANS RECEIVED - LOGGED IN AND TO J. KLINE
11-MAY-12	N	Y	More review comments sent (E-mail) to Bob Gilboy & Carl Frey. Slope needs to be lessened at conn. to ex. M.H., awaiting EPA & easement documentation. Copy of comments also sent to Tom Kreczko (Beachwood Staff Engr.).
17-JUL-12	N	N	REPLY TO REVIEW COMMENTS RECEIVED FROM BOB GILBOY (ERDMAN).
16-AUG-12	N	Y	THIS DATE SIXTEEN (16) SETS PLANS RECEIVED FOR APPROVAL BY W. SCHNEIDER. SIX (6) SETS KEPT FOR COUNTY USE - USUAL - AND TEN SETS TO BE PICKED UP BY A REPRESENTATIVE OF ERDMAN. CONTACT NAME IS ROBERT GILBOY AT 608-410-8114.
17-AUG-12	Y	N	ON AUGUST 16, 2012 PLANS APPROVED. THIS DATE TWO (2) SETS PLANS SENT BY MAIL TO ROBERT GILBOY AT ERDMAN, ONE ERDMAN PLACE, MADISON, WISCONSIN, 53717.
26-SEP-12	Y	N	J. KLINE & W. SCHNEIDER SPOKE W/ BOB GILBOY (ERDMAN) TODAY. STILL WAITING ON EPA APPROVAL LETTER, BUT ALLOWING CONTRACTOR TO WORK ON SANITARY CONNECTION AT THE INTERSECTION OF HARVARD & GREEN RDS.
11-OCT-12	Y	N	THIS DATE SITETECH, CONTRACTOR FOR PROJECT, IN TO PAY FOR TEN (10) DAYS INSPECTION AT \$3,100.00. CHECK #10728 - RECEIPT #11003.

STAGE 2 U.H. REHAB HOSPITAL BEACHWOOD

Review Date	Approved	Revise	Comments
08-MAR-12	N	Y	Review Comments sent (E-mailed) to Bob Gilboy on Mar. 8, 2012.
14-MAR-12	N	N	STAGE SUBMITTED
14-MAR-12	N	N	THIS DATE SIX (6) PLANS RECEIVED - LOGGED IN AND DELIVERED TO J. KLINE FOR HER REVIEW
13-APR-12	N	N	Revised Grease Trap & piping info sent.
16-APR-12	N	N	Revised Grease Trap & piping info looks O.K.
19-APR-12	N	Y	THIS DATE LOGGED IN SIX (6) COPIES OF REVISED SHEET C103 - TO J. KLINE
03-MAY-12	Y	N	THIS DATE PLANS APPROVED. TWO SETS SENT TO ENGINEER ROBERT GILBOY AT ONE ERDMAN PLACE, MADISON, WISCONSIN, 53717. SET OF PLANS FOR OFFICE HAS COMPLETE PLUMBING PLANS.
03-MAY-12	Y	N	E-mail sent to Beachwood Staff Engr. Tom Kreczko letting him know the County D.P.W. is approving this project with the condition the building is not to tie into the san. main until it has been accepted by the County D.P.W.
03-MAY-12	Y	N	Approval notice E-mailed to Designers (Bob Gilboy & Carl Frey). Note: the building san. sewer is not to connect to the yet-to-be-built sanitary main until the County D.P.W. has accepted the sewer main.
25-MAY-12	Y	N	ON MAY 24, 2012 CONTRACTOR (SITETECH) IN TO PULL PERMIT #84285 FOR SANITARY FOR THIS PROJECT. HE ALSO PAID FOR TWO DAYS INSPECTION - ALL ON ONE CHECK #9467.

PROJECT 12-012 RICHMOND ROAD RECONSTRUCTION**STAGE 1 RICHMOND ROAD CONSTRUCTION**

Review Date	Approved	Revise	Comments
16-MAR-12	N	N	THIS DATE ONE (1) SET PLANS RECEIVED - PRE-LIM- TO W.S.
16-MAR-12	N	N	STAGE SUBMITTED

PROJECT 12-016 COMMERCE PARK RD. & GREEN RD.-INTERSECTION IMPROV**STAGE 1 COMMERCE PARK RD. & GREEN RD.-INTERSECTION IMPROV**

Review Date	Approved	Revise	Comments
29-MAR-12	N	N	STAGE SUBMITTED
29-MAR-12	N	N	THIS DATE ONE (1) SET PLANS RECEIVED FROM W. SCHNEIDER - LOGGED IN AND TO S. TOTH PER W. S.
04-APR-12	N	N	THIS DATE S. TOTH RETURNED SINGLE SET OF PLANS TO NCB. WROTE ON PROJECT STATUS SHEET THAT HE E-MAILED HIS COMMENTS TO THE CONSULTANT. SET OF PLANS PUT INTO PROJECT FILE PER S. TOTH.

PROJECT 12-037 ALOFT HOTEL SITE IMPROV. PLANS**STAGE 1 ALOFT HOTEL SITE IMPROV. PLANS**

Review Date	Approved	Revise	Comments
05-SEP-12	N	N	THIS DATE SIX (6) SETS PLANS RECEIVED - LOGGED IN AND TO W. SCHNEIDER
05-SEP-12	N	N	STAGE SUBMITTED
14-SEP-12	N	Y	REVIEW COMMENTS SENT TO CHRIS SCHMIDT @ TGC ENGINEERING.
25-SEP-12	N	Y	SPOKE TO CHRIS SCHMIDT RE: REVIEW COMMENTS. PLANS TO BE REVISED.
05-OCT-12	N	Y	SPOKE TO CHRIS SCHMIDT (TGC ENGINEERING) RE: SLOPES FOR SAN. LATERALS (THEY'RE RATHER STEEP, TO BE LESSENERED). REVISIONS ARE IN THE WORKS.
15-OCT-12	N	Y	THIS DATE SIX (6) SETS REVISED PLANS RECEIVED - LOGGED IN AND TO J. KLINE.
17-OCT-12	N	N	PLUMBING PLANS E-MAILED TO J. KLINE.
17-OCT-12	Y	N	THIS DATE FINAL PLAN APPROVAL. TWO (2) SETS SENT TO CHRIS SCHMIDT AT TGC ENGINEERING, LLC, 387 MEDINA ROAD, SUITE 500, MEDINA, OHIO 44256.
17-OCT-12	N	N	SPOKE TO CHRIS SCHMIDT FROM TGC ENGINEERING. REVISIONS APPEAR SATISFACTORY, WAITING ON PLUMBING PLANS.
07-DEC-12	Y	N	ON THIS DATE ANDREW DUMUSY FROM PRIDEONE CAME IN TO PULL SANITARY PERMIT AND PAY FOR SIX DAYS OF INSPECTION. HE WAS GRANTED PERMISSION TO PULL PERMIT AND SIGN INSPECTION AGREEMENT BY STUART BREITENSTEINE OF WELLINGTON CONSTRUCTION, THE SUB CONTRACTOR. HE PAID WITH CHECK #2537 IN THE AMOUNT OF \$2,280.00, WHICH IS THE TOTAL OF SIX DAYS INSPECTION PLUS TWO PERMITS. SINCE HE NEEDED ONLY ONE PERMIT, THE EXTRA TWO HUNDRED TEN (\$210.00) IS BEING APPLIED TO INSPECTION. IF NOT NEEDED, HE WILL WRITE A LETTER REQUESTING REFUND.

PROJECT 12-041 SSA - BEACHWOOD**STAGE 1 SSA - BEACHWOOD**

Review Date	Approved	Revise	Comments
17-SEP-12	N	N	THIS DATE SIX SINGLE SHEET SETS DROPPED OFF BY CONTRACTOR TRYING TO GET LICENSED WITH CCDPW. PER W. SCHNEIDER, PLANS LOGGED IN AS NEW PROJECT AND ASSIGNED TO J. KLINE.
17-SEP-12	N	N	STAGE SUBMITTED
19-SEP-12	N	Y	REVIEW COMMENTS SENT (E-MAIL) TO TED SAHLEY AND DESIGN ENGR. BRUCE ROBINSON. SAN. SEWER LAYOUT TO BE REVISED.
21-SEP-12	N	Y	REPLY TO REVIEW COMMENTS RECEIVED FROM BRUCE ROBINSON.
25-SEP-12	N	N	REVISED PLANS RECEIVED ELECTRONICALLY. LAYOUT LOOKS O.K. REVISED REVIEW COMMENTS SENT (E-MAIL) TO BRUCE ROBINSON & TED SAHLEY.
28-SEP-12	N	N	DRAINAGE MAP, PLUMBING PLANS, SAN. CALCS. AND BRUCE ROBINSON'S REPLY TO LATEST REVIEW COMMENTS WERE RECEIVED

Review Date	Approved	Revise	Comments
			ELECTRONICALLY BY J. KLINE. REVISED PLANS ARE IN THE WORKS.
02-OCT-12	N	Y	THIS DATE SIX (6) SETS REVISED PLANS BROUGHT IN BY CONTRACTOR TED SAHLEY - LOGGED IN AND TO J. KLINE.
03-OCT-12	Y	N	FINAL PLAN APPROVAL 10/2/2012. ON 10/3/12 CONTRACTOR-WAP CONSTRUCTION, WAS IN TO PURCHASE A PERMIT (SAN ONLY) AND FIVE (5) DAYS INSPECTION FOR \$1,550.00. SCHEDULED TO START WORK THURSDAY, 10/4/2012. ALSO ON THIS DATE TWO SETS PLANS WERE SENT TO MR. BRUCE L. ROBINSON, P.E., P.S. AT P.O. BOX 1105, CUYAHOGA FALLS, OHIO 44223.
11-OCT-12	N	Y	THIS DATE SIX (6) COPIES OF REVISED PAGE C-4 RECEIVED - LOGGED IN AND TO J. KLINE FOR APPROVAL.
11-OCT-12	N	N	SPOKE TO BRUCE ROBINSON (DESIGNER) RE: SAN. REVISIONS (SAN. M.H.'S MOVED, GRADE & RIM ELEV.'S CHANGED). THEY APPEAR SATISFACTORY, BUT NEED BEACHWOOD ENGINEER'S APPROVAL. LEFT MESSAGE WITH (& BRUCE ROBINSON E-MAILED) CITY ENGR. JOE CIUNI.
12-OCT-12	Y	Y	THIS DATE REVISED PAGE C-4 APPROVED. THEIR WERE EIGHT (8) COPIES. DAWN TOOK INSPECTOR I AND CONTRACTOR'S COPY. JEN HAS OFFICE COPY. NCB TO KEEP INSPECTOR II COPY AND SEND REMAINING FOUR (4) COPIES TO BRUCE L. ROBINSON AT P.O. BOX 1105, CUYAHOGA FALLS, OHIO 44223.

PROJECT 12-043 COMMERCE PARK PLACE

STAGE 1 COMMERCE PARK PLACE

Review Date	Approved	Revise	Comments
12-OCT-12	N	N	STAGE SUBMITTED
12-OCT-12	N	N	THIS DATE SIX (6) SETS OF IMPROVEMENTS FOR REVIEW AND APPROVAL - TO BILL SCHNEIDER.
06-NOV-12	N	Y	REVIEW COMMENTS SENT TO MATT NEFF (DESIGN ENGR.).

Section A-4

Service Program*

* No service provided if section is blank

City of Beachwood

<u>Type</u>	<u>Community Total</u>
Sanitary Sewers	285,509 Feet
Manholes	1,392 (Approximately)

2012 Service Program

<u>Program</u>	<u>2012 Activity</u>
1) High Pressure Cleaning*	47,890 Feet
2) House Service	8 Calls
3) Television Inspection*	28,858 Feet
4) Construction Activities	18 Job(s)
5) Smoke and Dye Testing	0 Test(s)
6) Construction Permits Issued (Commercial)	3
(Residential)	8
7) Plan Review	7 Plan(s)
8) Capital Projects	2,307 Feet (New Sewer Lines Inspected)

*Information includes footages for sanitary (collection system) and storm sewers.

Section A-5

Community Operating Expenses

City of Beachwood
2012 Operating Expenses

<u>Activity</u>	<u>Cost</u>
1. Maintenance of Sanitary Sewerage Systems	\$84,714
2. Pump Station Operation and Maintenance	\$16,642
3. Waste Water Treatment Plant Maintenance	\$ 0
4. Engineering and/or Inspection	\$42,091
5. Capital Expenses (See Section A-6 if any)	\$ 0
6. Sanitary Overhead	\$3,862
 Total Expenses:	 \$147,309

Section A-6

Community Capital Expenses

* No service provided if section is blank

CONTACT INFORMATION

Address

Cuyahoga County Department of Public Works
 6100 West Canal Road
 Valley View, OH 44125
 Email: Publicworks@cuyahogacounty.us
 Website: Publicworks.cuyahogacounty.us

Bonita G. Teeuwen, P.E..... Director of Public Works
 Douglas L. Dillon, P.E., P.S. Design & Construction Administrator
 Michael W. Dever, MPA.....Maintenance Administrator
 Michael W. Chambers, CPAFiscal Officer
 Bryan J. Hitch..... Maintenance Superintendent

<i>Dispatch Office</i> (216) 443-8201	<i>Dispatch Email</i> PWDDispatch@cuyahogacounty.us
<i>Administration</i> (216) 443-8215	<i>Inspection & Permits</i> (216) 443-8211
<i>Engineering</i> Douglas L. Dillon, P.E., P.S., Design and Construction Administrator (216) 443-8614	<i>Sewer Maintenance</i> Gary Green, Senior Supervisor (216) 443-8225
<i>Lateral Services (House Crews)</i> John Gribble, Supervisor (216) 443-8227	<i>Inflow & Infiltration</i> Suzanne Britt, Supervisor (216) 443-3533
<i>Construction</i> Mitch Holt, Supervisor (216) 443-8229	<i>Televised Inspection</i> Todd Swindell, Supervisor (216) 443-8224
<i>Sewer Jetting</i> Guy Swindell, Supervisor (216) 443-8226	<i>Pump Station Operations</i> William Applegarth, Supervisor (216) 443-8295