



2012 ANNUAL REPORT

Prepared For The:

CITY OF BRECKSVILLE



CUYAHOGA COUNTY
DEPARTMENT OF PUBLIC WORKS

TABLE OF CONTENTS

Introduction.....I

Mission Statement & Overview.....2

Appendix Description.....II

Community Streets Cleaned.....A-1

Community Streets Inspected.....A-2

Project Status.....A-3

Service Program.....A-4

Community Operating Expenses.....A-5

Community Capital Expenses.....A-6

Contact Information.....Rear Folio



CUYAHOGA COUNTY DEPARTMENT of PUBLIC WORKS

March 31, 2013

The Honorable Jerry N. Hruby
City of Brecksville
9069 Brecksville Road
Brecksville, Ohio 44141

Dear Mayor Hruby:

It is with great pride that I present to you the 2012 Annual Report for the Cuyahoga County Department of Public Works Sanitary Service. This report contains a detailed overview of the components that bring together the agency, information on work completed within your municipality, including operating expenses over the past year. As in previous reports, we have included maps displaying the following: the cleaning and inspection of system mainlines, locations of construction activity, inflow and infiltration areas of study, house visits, and the cleaning and inspection of lateral connections, as it pertains to the service in which we provide to you.

This year has been a dynamic one for Cuyahoga County. We have implemented many changes to improve our department and this can be felt by the communities we service. We are continuously striving to incorporate new and ground breaking practices into the way we perform each day, and I am confident that this agency has the tools to offer you the highest level of both customer service and innovative technologies. The Charter's creation of the Department of Public Works has afforded us the ability to utilize a larger and more diverse work force, and thus be able to better dispatch staff to your community during high-volume rain events and natural disasters. It is our obligation to provide the most effective level of water pollution control possible.

Our joined efforts here are key to promoting regionalism and play an integral role in the further development of this region. It is my honor to serve your community and to continue to diligently meet the varying needs of all of Cuyahoga County.

Respectfully submitted,

A handwritten signature in blue ink, appearing to read 'Bonita G. Teeuwen'.

Bonita G. Teeuwen, P.E.
Director of Public Works

OVERVIEW

Originally established in 1919, the Sanitary Engineering Division was created to administer authority in matters of wastewater, storm water, and water supply management. In 2012, the Sanitary Engineering Division (formerly CCSE) became a part of the Cuyahoga County Department of Public Works, and now operates under the County Executive Ed FitzGerald.

Our focus on needs assessment, engineering feasibility studies, maintenance and repair of aging sewer lines, as well as other infrastructure-related issues, has a direct impact on commercial and residential development, job creation, and expanded tax base in the communities served by the Department of Public Works.

This Division is a major source of information and guidance that mayors, municipal engineers, and service directors rely on when making infrastructure decisions within their community. The Division has considerable experience in the maintenance of sanitary and storm sewer lines, many of which are old and have performed beyond their design life. Moreover, the Division has much expertise with respect to wastewater treatment plants and pump stations.

Public Works directs an operation which now encompasses more than 34 communities and maintains nearly 1,200 miles of sanitary sewers, treats millions of gallons of wastewater, operates 51 sewage-pumping stations, and maintains 2 wastewater treatment plants throughout Cuyahoga County. The Division also has agreements with municipal corporations for the establishment, operation, and maintenance of sanitary sewers.

Working in cooperation with the Ohio Environmental Protection Agency (Ohio EPA), the Northeast Ohio Regional Sewer District (NEORS), the City of Cleveland Division of Water, and the Cuyahoga County Board of Health; the Division manages a Capital Improvement Program (CIP) used for upgrading or replacing the existing infrastructure and for expanding sewers to non-sewered areas. The CIP includes information about project type, location, funding, preliminary engineering, and final plan development.

All operating funds for the Division are created through fees and assessments. The Division does not receive a subsidy through the County General Fund; however, it does use the General Fund's bonding capacity.

The Department of Public Works has been in the forefront of regionalism efforts, and with services provided to over half of the 59 communities within county lines, the office continues to maintain reasonable rates and improved infrastructure throughout the area.

MISSION STATEMENT

“To provide and maintain a safe and efficient regional infrastructure system for residents, employees, businesses and visitors through innovative solutions, high-quality workmanship and superior customer service.”



- Reduce the number of flooded basements by decreasing mainline blockage, minimize the inflow/infiltration of storm water in the sanitary system, and evaluate the structural integrity of entire sewerage system;
 - Increase efficiency to reduce operating cost and produce more available funding for capital improvement projects;
 - Operate wastewater treatment plants in compliance of National Pollution Discharge Elimination System (NPDES) permit parameters;
 - Provide guidelines for new construction through use of *Uniform Standards for Sewerage Improvements*;
 - Review and approve new improvement plans; and
 - Provide infrastructure needs assessment for communities.
-
- Capital improvement planning
 - Plan review and approval of all new sewer improvements within the County sewer districts
 - Construction management
 - Geographic information systems (GIS)
 - Project design
 - Engineering analysis (required for operation of facilities and the collection system)
 - Operational checks (EPA permit compliance)
-
- Operation and maintenance of wastewater treatment plants and pumping stations
 - Inspection of new wastewater collection and transportation systems within County sewer districts
 - Issuance of connection permits
 - Issuance of sewer builders' licenses
 - Development, implementation and monitoring of safety guidelines

GOALS OF THE PUBLIC WORKS DEPARTMENT

ENGINEERING SERVICES

FACILITIES OPERATION & MAINTENANCE



ADMINISTRATIVE SUPPORT SERVICES

In addition to the extensive maintenance services we offer, our administrative support includes the following:

- Capacity, Management, Operation, and Maintenance (CMOM) Program as regulated through the US EPA to help prevent Sanitary Sewer Overflows (SSO's)
- Maps and spatial analysis for design and service management
- Geographical information systems for development and implementation
- Record keeping, as-built plans and test tee location
- Fiscal oversight of annual operating budget and capital improvement budget
- Grant and loan administration
- Licensing and permitting of over 200 contractors
- Inspection of sewers and project oversight
- Design and review of construction projects and analysis of field testing

Maintenance Services

Mainline
Sewer
Cleaning

Lateral &
Mainline
Sewer
Repair

Lateral
Cleaning
(From
Test Tee
to
Mainline)

Smoke
& Dye
Testing

Digital
Video
Inspection

Treatment
Plant &
Pump
Station
Maintenance
&
Operation

24-Hour
Call
Out
Services

SUMMARY OF SERVICE DELIVERY

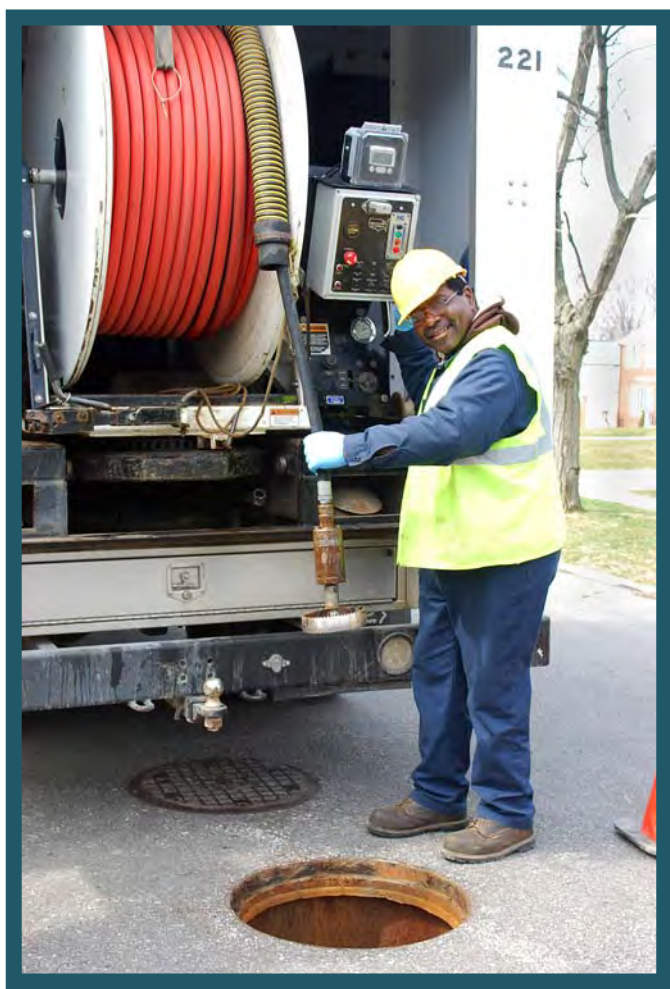
- High-pressure jetting of street sewer from the right-of-way, approximately 1,200 miles of sanitary sewers.
- Point repairs as well as capital improvement projects
- Cleaning of line from right-of-way to the house, approximately 7,500 houses annually
- Inflow and Infiltration testing and solutions
- Televising of lines for identifying possible failures or deficiencies
- Licensed wastewater operators to monitor the condition of the treatment plants and pumping stations, as well as implement upgrades and preventative maintenance.
- Emergency maintenance and 24- hour on-call team for resident issues

INTERNAL STRUCTURE OF THE DIVISION

SEWER MAINTENANCE

The Sewer Maintenance section provides a full-service program to clean, evaluate, maintain structural integrity, and perform construction on sanitary and storm sewers. The general program consists of cleaning all sanitary sewers every three years and televising all sanitary sewers every six years, which is well within the NEORSD's

"Best Management Practices" guidelines.



The Division cleans approximately 7,500 house connections annually. The goal is to reduce basement flooding through inflow/infiltration reduction, reduce blocked mains, clean service connections and maximize sewer capacity.

The Department of Public Works has an Inflow and Infiltration section within the Lateral Service Department. This section uses various tools; flow meters to monitor sanitary mainlines during both dry and wet weather conditions as well as measuring wastewater flows coming into treatment plants and water flows in storm sewers. Smoke and dye testing can isolate areas affected by excessive volumes of clean runoff into the sanitary sewer system. When used

in unison, meters can detect extraneous water while smoke and dye testing can identify illegal downspout connections. Meters can also detect rainwater infiltrating through the ground and into sanitary sewers through bad pipe joints and cracked or broken pipe.

ENGINEERING

The Engineering Section provides technical services to its customers including capital project planning, grant and loan administration, design engineering, construction management, and inspection of sanitary and storm sewers, pump stations, and wastewater treatment facilities.

This section oversees capital construction projects that include financing in the forms of grants and loans obtained from the State of Ohio, as well as saving through maintenance efficiencies. These funds are utilized for lining, repairing, replacing, and rehabilitating existing sanitary and storm sewerage systems.

The Engineering Section reviews design plans for approximately eighty-five construction projects per year on behalf of thirty-four communities. It also coordinates and analyzes the results of field testing and flow monitoring in order to detect and eliminate storm water inflow/ infiltration from the sanitary sewer system. In addition, the Engineering Section maintains files and legal libraries of pertinent federal, state, and local regulations and renders technical assistance to other sections regarding these regulations.



INSPECTION/PERMITS

The Inspection and Permit section operates in 34 suburban communities. This section's major functions include: the licensing, bonding and permitting over 200 contractors, construction inspection of sanitary and storm sewers; which includes: residential, commercial, and industrial; along with the inspection of wastewater treatment plants and pumping stations. This section also maintains the permanent records for sewerage construction projects and provides information to all County departments, engineering consulting firms, contractors, and the public.

ENVIRONMENTAL SERVICES

■ Wastewater Treatment Plants

The County operated 2 wastewater treatment package plants. These facilities treated 147 million gallons of wastewater per year. The standards are set for each facility by the Ohio EPA through the National Pollution Discharge Elimination System (NPDES) permit. The support staff consists of wastewater operators licensed by the Ohio EPA who monitor the conditions of the plants and make necessary process adjustments to meet the NPDES permit.



■ Pumping Stations

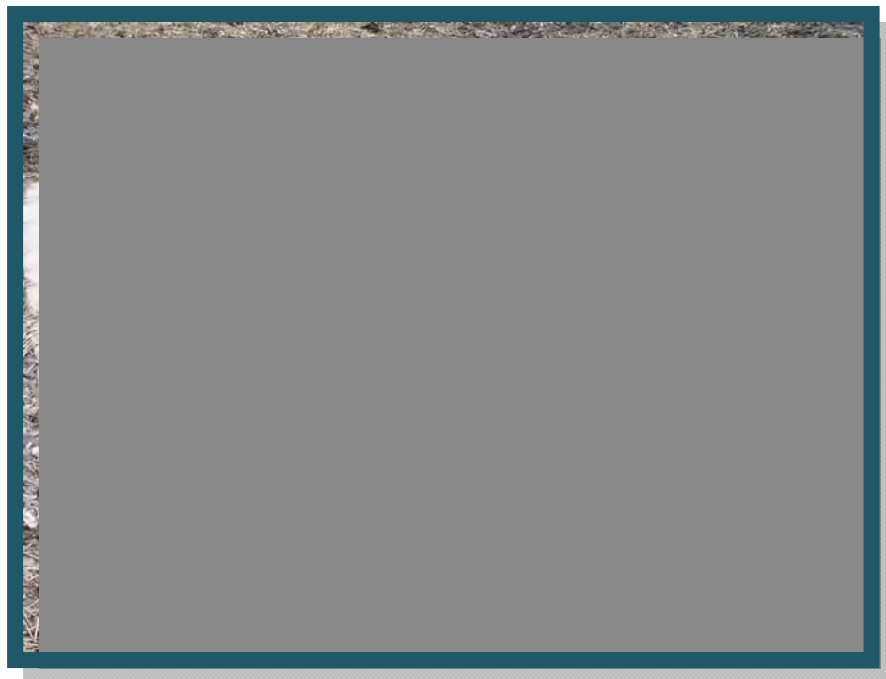
The County operates 51 pumping stations throughout the 34 service communities. A Supervisory Control and Data Acquisition (SCADA) system monitors 41 of the stations. The system provides alarms and operational status through a central computer that is accessed from a remote computer providing 24 hour monitoring. It is our goal to upgrade all County operated pump stations and to expand the SCADA system to all new projects. Our maintenance staff consists of professional mechanics enabling us to repair most problems in-house, therefore keeping costs down. Their preventive maintenance program and dedication to the job has reduced emergency call-outs and overflows.

ENVIRONMENTAL SERVICES, continued

■ Capacity, Management, Operation, and Maintenance Program (CMOM)

The CMOM Program is a set of “best management practices” that have been developed by the industry and are applied over the life cycle of the collection system. It is these general practices that are taken into consideration when a system is being reviewed by a Federal or State agency. Improvement and recommendations are provided by such agencies based on deficiencies identified in the sanitary sewer system.

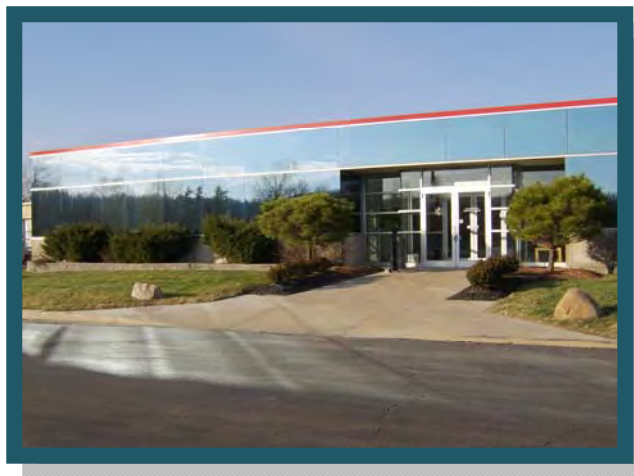
The United States EPA contacted our agency in July of 2009 in response to our CMOM's Report. In general, our Management, Maintenance and Operational processes meet the standard of the United States EPA. The main issue identified by them as a deficiency relate to any sanitary sewer overflows (SSO's). As we work with the communities to eliminate these overflows, the United States EPA has notified us that we have eliminated the noted deficiencies to our CMOM's Report and that we are in compliance with these "best management practices".



INFORMATION TECHNOLOGY

The Information Technology (IT) Section provides computer and analytical support to internal end users and communities within the Department. It is responsible for the design, implementation and maintenance of geographical map-based and other relational database systems, as well as guiding data acquisition tasks throughout the Division. In addition, the computerized mapping program catalogues the location of sewer systems and performs analysis on spatial data. This ability supports the planning, designing, and maintenance of sewer systems, as well as ensuring user fees are appropriately assessed and collected. Furthermore, the mapping program now features attached permits and engineering drawings.

In 2012 the IT Section completed 24 new computer installations according to the County's cyclical replacement policy. The IT Section also assisted in the removal of multiple personal printers in favor of centralized and efficient print centers; improved the engineers' access to the Geographic Information System and related analytical tools; and continues to assist internal departments with moving to a more digital, paperless record keeping system.



FINANCE SECTION

The Finance Section provides support services to various units within the Public Works Department. Automated cost accounting programs and systems ensure accurate tracking and monitoring of expenditures, revenues, rate structures and other data that provide planning for capital projects and operational budgets. All systems and programs are operated under generally accepted accounting principles.

The Finance Section oversees an annual sanitary operating budget in excess of \$14 million and an annual capital improvement budget of \$5- \$10 million. The capital improvement plan is administered by this section and revenues, as well as expenditures, are approved and monitored for each individual improvement. Finance is responsible for accounts receivable, accounts payable, cost accounting, audit, inventory control, vehicle inventory management, capital project financing, purchasing, and the assessment of users fees.

APPENDIX DESCRIPTION*

The following appendices contain a variety of reports representing the services provided to communities in 2012. The Public Works Department follows a manhole-to-manhole, sewer segment-based accounting method for Jet Cleaning and TV Inspection maintenance services. The first two reports contain listings of the collection system cleaned and inspected for the year by street. The following report discloses the more significant projects submitted and reviewed by the Permit and Engineering sections during the year for your community. Smaller review services such as house connections or ongoing, intermittent review of large multi-phase projects spanning several years of development are not shown on this report. The final appendices are from the Finance and Billing section. These reports provide a breakdown of operating expenses, capital project costs contracted for the community, as well as additional services including house visits, inflow/infiltration studies, and construction activity. A map is enclosed showing areas where collection system mainlines were Jet cleaned and TV inspected, construction crew activity locations, house visits and if house lateral connections needed to be cleaned or inspected. The DVD provided contains a PDF file of the map, which can be copied for distribution. Adobe Corporation's free reader software is required and can be downloaded from www.adobe.com.

* Please note: These appendix reports are provided only to communities for which the specific service is provided by the Department of Public Works. For example, if regularly scheduled mainline cleaning service is not provided for your community, a map was not produced. Similarly, if project review or capital project management services are not provided to your community, then there is no corresponding report. Certain communities are provided limited maintenance on county improvement mainlines and/or facilities only.



6100 West Canal Road, Valley View, OH 44125 | **ph** 216.443.8201 | **fx** 216.443.8276

publicworks.cuyahogacounty.us | PublicWorks@cuyahogacounty.us

Section A-1

Community Streets Cleaned*

* No service provided if section is blank

Collection System Jet Cleaning - 2012

Brecksville

STREET	NUMBER OF SEGMENTS	JET FT
AMBER LANE	10	2,150
BEECHWOOD DRIVE	5	1,199
BEECHWOOD EASEMENT	4	773
BOXELDER DRIVE	10	1,792
BRADFORD LANE	5	800
BRECKSVILLE ROAD	12	2,725
CAMBRIDGE DRIVE	6	1,430
CARRIAGE HILL DRIVE	14	2,699
CASTLE COURT	1	320
CEDAR STREET	1	293
CHAFFEE COURT	3	1,027
CHAPEL HILL DRIVE	6	1,377
CHAPEL HILL OVAL	1	203
CHAUTAUQUA TRAIL	6	896
CHEROKEE LANE	6	1,275
CHESTNUT CIRCLE	4	749
CHIPPEWA ROAD	3	734
COMPASS POINT SOUTH DRIVE	6	1,444
COVEWOOD COURT	1	255
CRANBROOK DRIVE	7	1,701
CRESTVIEW DRIVE	6	919
CRINKLEROOT CLEARING	2	493
CROSSWINDS LANE	1	300
DAISY	6	1,043
DAVENTREE	6	1,277
DEER RUN	17	3,676
DOGWOOD DRIVE	1	49
DUNBAR EASEMENT	1	76
DUNBAR LANE	10	1,589
EAGLE RIDGE CIRCLE	2	373
ENGLISH DRIVE	5	816
FARVIEW OVAL	2	332
FARVIEW ROAD	11	2,871
FROST LANE	4	831
GATEWOOD DRIVE	13	3,201
GLEN DRIVE	4	424
GLEN EAGLE DRIVE	4	1,076

Collection System Jet Cleaning - 2012

Brecksville

STREET	NUMBER OF SEGMENTS	JET FT
GLENHOLLOW COURT	2	404
GLENWOOD TRAIL	11	2,851
GREENBRIER DRIVE	6	1,138
GREENHAVEN PARKWAY	1	140
HAWTHORNE DRIVE	4	1,115
HICKORY RIDGE	3	598
HIGHLAND ROAD	1	50
HINCKLEY CIRCLE	2	458
HOLLIS COURT	2	416
HOLLIS LANE	12	2,219
HUNTING DRIVE	11	2,766
IROQUOIS TRAIL	3	847
KINGS COURT	3	720
KNOLLS LANE	3	781
LAKE FOREST DRIVE	7	1,382
LAKE PARK DRIVE	10	1,490
LAKEPARK DRIVE	1	75
LAUREL LANE	2	573
LLOYD DRIVE	6	1,298
LOG CABIN COURT	2	472
MILL	8	1,941
NORTH COURT	1	294
OAKES ROAD	1	100
OLD ORCHARD DRIVE	16	2,116
OLD QUARRY LANE	12	2,477
OTTAWA DRIVE	2	607
OXFORD TRAIL	8	1,947
PARTRIDGE TRAIL	1	297
PERSHING DRIVE	3	797
PINEVIEW OVAL	8	1,700
PUBLIC SQUARE EASEMENT	1	116
QUAIL DRIVE	3	454
RIVERVIEW	4	925
RIVERVIEW EASEMENT	2	382
ROSEMONT DRIVE	6	1,484
SETTLERS PASSAGE	18	3,863
SHERWOOD TRAIL	7	1,740

Collection System Jet Cleaning - 2012

Brecksville

STREET	NUMBER OF SEGMENTS	JET FT
SNOW BLOSSOM LANE	1	0
SNOWVILLE	6	1,013
SOMERSET DRIVE	6	1,422
SOUTH COURT	1	369
STOVER LANE	3	719
SUNNYDALE DRIVE	21	5,347
TANAGER OVAL	1	230
TANAGER TRAIL	14	2,547
TIMER TRAIL	1	22
VERA DRIVE	9	2,323
WALLINGS	8	2,471
WESTVIEW DRIVE	13	3,538
WESTWOOD DRIVE	6	1,103
WIESE ROAD	1	157
WILLOW COURT	1	329
WINDING WAY	19	4,190
WINDSWEPT DRIVE	12	1,591
Grand Total:	522	111,592

Section A-2

Community Streets Inspected*

* No service provided if section is blank

Collection System TV Inspection - 2012

Brecksville

STREET	NUMBER OF SEGMENTS	TV FT
ALMOND WALCOTT	2	277
AMBER LANE	5	1,226
ASHLAWN DRIVE	9	2,213
ASHLAWN EASEMENT	1	146
BARR ROAD	1	288
BOXELDER DRIVE	8	1,107
BRADFORD LANE	10	2,036
BRECKSVILLE ROAD	5	1,501
BROOKSIDE DRIVE	1	165
BROOKVIEW DRIVE	5	1,027
CARDINAL LANE	4	1,233
CARRIAGE HILL DRIVE	12	2,346
CEDAR STREET	2	476
CHAFFEE COURT	1	215
CHIPPEWA ROAD	5	1,150
CINNABAR DRIVE	7	1,425
CRABTREE EASEMENT	1	246
CRABTREE LANE	8	1,234
CRANBROOK DRIVE	5	1,234
CRESTVIEW DRIVE	8	1,249
CRYSTAL CREEK DRIVE	4	1,237
CRYSTAL CREEK EASEMENT	2	146
DAISY	6	879
DAVIDSON DRIVE	1	300
DEER RUN	13	2,868
DUNBAR LANE	8	1,394
EAGLE RIDGE CIRCLE	2	188
ELM STREET	2	290
ENGLISH DRIVE	4	669
FARVIEW OVAL	2	330
FARVIEW ROAD	3	859
FITZWATER	32	7,024
FOREST LANE	11	1,282
FROST LANE	3	662
GATEWOOD DRIVE	11	2,748
GLENHOLLOW CT EASEMENT	1	7
GLENWOOD TRAIL	7	1,482

Collection System TV Inspection - 2012

Brecksville

STREET	NUMBER OF SEGMENTS	TV FT
GREENBRIER DRIVE	6	1,235
GREENHAVEN PARKWAY	17	4,153
HAWTHORNE DRIVE	2	360
HICKORY RIDGE	10	1,963
HIGHLAND DRIVE	1	166
HIGHLAND ROAD	1	8
HOLLIS EASEMENT	2	198
KNOLLS LANE	2	380
LAKE PARK DRIVE	6	808
LAUREL LANE	5	1,210
LAWN PARK DRIVE	16	3,287
LAWNPARK DRIVE	3	161
LLOYD DRIVE	3	645
LONG FOREST	11	1,700
LOOKOUT DRIVE	4	756
LOOKOUT EASEMENT	1	187
MAIDSTONE DRIVE	2	352
MEADOW LANE	9	1,398
MERCER LANE	2	192
MILL	1	388
OAK PARK	1	390
OAKES ROAD	3	337
OAKHURST CIRCLE	6	943
OAKHURST DRIVE	6	1,029
OLD ORCHARD DRIVE	7	761
OLD ROYALTON EASEMENT	2	316
OLD ROYALTON ROAD	3	580
OXFORD TRAIL	8	1,832
PARK PLACE	4	756
PARTRIDGE TRAIL	4	1,209
PINEVIEW OVAL	3	554
PRINCESS COURT	1	391
PROVINCE LANE	12	2,168
RIVERVIEW	1	434
RIVERVIEW EASEMENT	2	365
ROBIN LANE	5	936
ROCKLEDGE DRIVE	8	1,640

Collection System TV Inspection - 2012

Brecksville

STREET	NUMBER OF SEGMENTS	TV FT
ROSEMONT DRIVE	10	1,741
ROXBURGHE DRIVE	1	293
ROXBURGHE EASEMENT	1	296
SENECA EASEMENT	2	442
SETH PAYNE STREET	2	560
SNOW BLOSSOM LANE	1	194
SNOWVILLE	5	674
SOMERSET DRIVE	4	957
SPRINGSIDE OVAL	1	73
STADIUM DRIVE	3	236
STOVER LANE	3	721
SUMMER WIND DRIVE	3	484
SUNNYDALE DRIVE	9	2,529
SUNRISE TRAIL	2	237
SUNSTONE DRIVE	4	1,038
SUNSTONE EASEMENT	1	255
SWEETWATER DRIVE	8	2,030
TAMARACK TRAIL	11	2,373
TANAGER OVAL	2	383
TANAGER TRAIL	15	2,343
TIMBER TRAIL	26	4,367
TIMER TRAIL	2	42
TURNING LEAF	3	939
VALLEYBROOK DRIVE	14	2,289
VERA DRIVE	12	2,399
WALLINGS	5	1,724
WESTVIEW DRIVE	1	128
WESTWOOD DRIVE	6	1,100
WHITACRE CIRCLE	1	270
WHITEWOOD EASEMENT	1	65
WHITEWOOD ROAD	30	7,118
WIESE ROAD	3	483
WINDING WAY	10	1,763
WINDSWEPT DRIVE	10	1,402
WOODSTONE DRIVE	6	907
WOODSTONE EASEMENT	2	325
Grand Total:	612	120,526

Section A-3

Projects Status*

* No service provided if section is blank

CCSE PROJECT REVIEWS

MUNICIPALITY BRECKSVILLE

PROJECT 12-006 WIESE ROAD STORM SEWER IMPROVEMENTS

STAGE 1 WIESE ROAD STORM SEWER IMPROVEMENTS

Review Date	Approved	Revise	Comments
17-FEB-12	N	N	STAGE SUBMITTED
17-FEB-12	N	N	THIS DATE ONE (1) SET PLANS RECEIVED - LOGGED IN AND TO W. SCHNEIDER
06-MAR-12	N	N	Started review of this project on Mar. 5. Main comment I had was the bends in the storm connection pipes (this was not relayed by me to the Designer). Review turned over to another engineer.
10-OCT-12	N	Y	THIS DATE SIX (6) SETS IMPROVEMENT PLANS RECEIVED BY COURIER - LOGGED IN AND TO W. SCHNEIDER AT HIS REQUEST.
11-OCT-12	Y	N	THIS DATE LEONTI'S OUTDOOR SUPPLY CAME IN TO SIGN INSPECTION AGREEMENT. THIS JOB IS A "BILL TO CITY" AND THEY INTEND TO START WORK ON FRIDAY, 10/12/12.
11-OCT-12	Y	N	FINAL PLAN APPROVAL THIS DATE. TWO SETS SENT TO GERALD M. WISE AT DONALD G. BOHNING AND ASSOCIATES, 7979 HUB PARKWAY, VALLEY VIEW, 44125.

PROJECT 12-015 STADIUM DRIVE PUMP STATION IMPROV. PLANS

STAGE 1 STADIUM DRIVE PUMP STATION IMPROV. PLANS

Review Date	Approved	Revise	Comments
22-MAR-12	N	N	THIS DATE ONE (1) SET PRE-LIMS LOGGED IN AND TO J. KUSNER
22-MAR-12	N	N	STAGE SUBMITTED
30-JUL-12	N	Y	THIS DATE RECEIVED SIX (6) FINAL PLANS-MATERIAL STORAGE FACILITY, AND ONE (1) SEWER CONNECTION APPROVAL LETTER FROM NEORS.
06-AUG-12	Y	N	ON AUGUST 3, 2012 PLANS APPROVED. ON AUGUST 6, 2012 TWO SETS SENT TO NATE WOSNICK, P.E. AT DONALD G. BOHNING AND ASSOC., 7979 HUB PARKWAY, VALLEY VIEW, OHIO, 44125.
18-OCT-12	N	N	ON THIS DATE NCB WAS MADE AWARE THAT SHE OPENED THE SAME PROJECT UNDER TWO DIFFERENT NAMES AND NUMBERS. THE CORRECT PROJECT NUMBER IS 12-015(1) AND CORRECT NAME IS "STADIUM DRIVE PUMP STATION IMPROVEMENT PLANS". GINA WARE, TOM SNEZEK AND JIM KUSNER MADE AWARE OF THIS.
22-OCT-12	Y	N	ON OCTOBER 19, 2012 SIX (6) SETS REVISED PLANS RECEIVED - LOGGED IN AND TO J. KUSNER. LATER ON OCTOBER 19, 2012 W. SCHNEIDER APPROVED SIX REVISED SETS OF PLANS. ON OCTOBER 22, 2012, NCB MAILED OUT TWO (2) SETS PLANS TO NATE WONSICK, P.E., AT BOHNING & ASSOCIATES, 7979 HUB PARKWAY, VALLEY VIEW, 44125.
09-NOV-12	Y	N	THIS DATE CAPITAL CONTRACTORS IN TO PURCHASE TWO PERMITS - SAN & STORM - AND ONE DAY INSPECTION AGREEMENT AT \$310.00 CHECK NUMBER 1887 IN TOTAL AMOUNT OF \$730.00. THAT IS COMBINED COST OF TWO PERMITS (\$420.00) AND ONE DAY INSPECTION (\$310.00).
13-DEC-12	Y	Y	THIS DATE ONE (1) SET PRE-LIMS GIVEN BY HAND TO NCB FROM J. KUSNER. INSTRUCTED TO LOG IN UNDER THIS PROJECT NUMBER AND STAGE. ALSO CAME WITH "CALCULATIONS" ATTACHED. LOGGED IN AND BACK TO J. KUSNER.

PROJECT 12-018 9800 HIGHLAND DRIVE STORM CULVERT REPLACEMENT

STAGE 1 9800 HIGHLAND DR. STORM CULVERT REPLACEMENT

Review Date	Approved	Revise	Comments
18-APR-12	N	N	STAGE SUBMITTED
19-APR-12	N	N	ON APRIL 18, 2012 ONE SET PLANS RECEIVED - LOGGED IN AND TO J. KUSNER PER R. SAKR
02-MAY-12	N	N	Plans look good to go. Spoke with designer and told him to send in 5 additional sets.
03-MAY-12	N	N	THIS DATE RECEIVED HAND DELIVERED FROM J. KUSNER CALCULATIONS AND DRAINAGE MAP TO BE PUT IN FILE.
04-MAY-12	N	N	THIS DATE RECEIVED FIVE (5) ADDITIONAL SETS PLANS. TRANSMITTAL LETTER STATES FIVE SETS REQUESTED BY KUSNER.
07-MAY-12	Y	N	THIS DATE PLANS APPROVED. ONE EXTRA COPY MADE SO THERE ARE SIX (6) SETS APPROVED PLANS. TWO SETS SENT TO GERALD M. WISE AT BOHNING & ASSOCIATES, 7979 HUB PARKWAY, VALLEY VIEW, OHIO 44125.

PROJECT 12-023 MEADOW LANE STRM SWR EXT. & SLOPE REPAIR IMPROV PL

STAGE 1 MEADOW LANE STRM SWR EXT. & SLOPE REPAIR IMPROV PL

Review Date	Approved	Revise	Comments
31-MAY-12	N	N	STAGE SUBMITTED
31-MAY-12	N	N	THIS DATE ONE (1) COMPLETE SET OF IMPROVEMENT PLANS RECEIVED - LOGGED IN AND TO J. KUSNER
05-JUN-12	N	N	The following review comments were sent 6/5/12: 1. Provide signature in the City Engineer's signature block. 2. Include a drainage area map and storm sewer calculations. 3. Include a legend or call out the abbreviations used on sheets 2/6 and 3/6.
11-JUL-12	N	N	THIS DATE SIX (6) SETS PLANS PLUS ONE SET STORM CALCS - LOGGED IN AND TO J. KUSNER
13-JUL-12	Y	N	THIS DATE PLANS APPROVED. TWO SETS SENT TO DAVID M. GRACON AT DONALD G. BOHNING * ASSOCIATES, 7979 HUB PARKWAY, VALLEY VIEW, OHIO 44125.

PROJECT 12-024 CHIPPEWA RD. STRM SWR EXT. & SLOPE REPAIR IMPROV P

STAGE 1 CHIPPEWA RD. STRM SWR EXT. & SLOPE REPAIR IMPROV.

Review Date	Approved	Revise	Comments
31-MAY-12	N	N	THIS DATE ONE (1) COMPLETE SET OF IMPROVEMENT PLANS - LOGGED IN AND TO J. KUSNER
31-MAY-12	N	N	STAGE SUBMITTED
05-JUN-12	N	N	The following review comments were sent 6/5/12: 1. Provide signature in the City Engineer's signature block. 2. Include a drainage area map and storm sewer calculations. 3. Include a legend or call out the abbreviations used on sheet 2/5.
11-JUL-12	N	N	THIS DATE SIX (6) SETS PLANS PLUS ONE SET STORM CALCSS- LOGGED IN AND TO J. KUSNER
13-JUL-12	Y	N	Approved 7/13/12
16-JUL-12	Y	N	PLANS APPROVED 7/13/2012. ON 7/16/2012 TWO SETS SENT TO DAVID M. GRACON AT DONALD G. BOHNING AND ASSOCIATES, 7979 HUB PARKWAY, VALLEY VIEW, 44125.

PROJECT 12-025 NORTH CT. STRM SWR EXT. & SLOPE REPAIR IMPROV PLAN

STAGE 1 NORTH CT. STRM SWR EXT. & SLOPE REPAIR IMPROV PLAN

Review Date	Approved	Revise	Comments
11-JUN-12	N	N	THIS DATE ONE (1) SET PLANS RECEIVED FROM ANN GLIHA - LOG IN AND TO J. KUSNER.
11-JUN-12	N	N	STAGE SUBMITTED
21-JUN-12	N	N	Review letter sent to designer 6/18/12: The following is a list of review comments: 1. Provide signature in the City Engineer's signature block. 2. Include a drainage area map and storm sewer calculations.
11-JUL-12	N	N	THIS DATE SIX (6) SETS PLUS ONE SET STORM CALCS - LOGGED IN AND TO J. KUSNER
13-JUL-12	Y	N	THIS DATE PLANS APPROVED. TWO SETS SENT TO DAVID M. GRACON AT DONALD G. BOHNING & ASSOCIATES, 7979 HUB PARKWAY, VALLEY

Review Date	Approved	Revise	Comments
			VIEW, OHIO 44125.
13-JUL-12	Y	N	Approved 7/13/12

PROJECT 12-027 SNOWVILLE RD. CULVERT REPAIR & STRM SWR IMPROV

STAGE 1 SNOWVILLE RD CULVERT REPAIR & STRM SWR IMPROV

Review Date	Approved	Revise	Comments
26-JUN-12	N	N	STAGE SUBMITTED
26-JUN-12	N	N	THIS DATE ONE (1) COMPLETE SET OF IMPROVEMENT PLANS (SHEETS 1-7) AND CALCULATIONS FOR THE SNOWVILLE ROAD CULVERT REPAIR AND STORM SEWER IMPROVEMENTS - HAND DELIVERED BY W.S. AND THEN GIVEN TO KUSNER PER W.S.
09-JUL-12	Y	N	No exceptions taken to 6/26/12 submittal. E-mailed Gerry Wise to send in 6 sets for Bill's signature.
11-JUL-12	N	N	THIS DATE SIX (6) SETS PLANS RECEIVED - LOGGED IN AND TO J. KUSNER
13-JUL-12	Y	N	Approved 7/13/12
16-JUL-12	Y	N	PLANS APPROVED 7/13/12. ON 7/16/12 TWO SETS SENT TO GERALD M. WISE, P.E. AT DONALD G. BOHNING AND ASSOC., 7979 HUB PARKWAY, VALLEY VIEW, 44125.

PROJECT 12-028 FORCHIONE OFFICE BUILDING

STAGE 1 FORCHIONE OFFICE BUILDING

Review Date	Approved	Revise	Comments
29-JUN-12	N	N	STAGE SUBMITTED
31-JUL-12	N	N	REVIEW COMMENTS SENT TO DESIGNER BRIAN UHLENBROCK (NEFF & ASSOC.).
06-AUG-12	N	N	RESPONSE & REVISIONS RECEIVED ELECTRONICALLY FROM DESIGN ENGR. (BRIAN UHLENBROCK AT NEFF & ASSOC.).
09-AUG-12	N	N	REVIEW COMMENTS SENT TO BRIAN UHLENBROCK (NEFF & ASSOC.). QUESTIONED PURPOSE OF STORM SEGMENT AT NORTHEAST CORNER OF PROP. PARKING AREA (NOT ATTACHED TO ANY STRUCTURES/SEWERS).
09-AUG-12	N	N	RESPONSE TO STORM QUESTION & SAN. LOADING INFO RECEIVED. STORM IS FOR DRAINING AREA NORTH OF PROPOSED PARKING AREA.
13-AUG-12	N	N	CONSTRUCTION ALREADY STARTED (INSIDE PROPOSED BLD.). SLEEVE IS THROUGH FOUNDATION WALL.
13-AUG-12	N	Y	FINAL REVIEW COMMENTS SENT TO BRIAN UHLENBROCK (NEFF & ASSOC.). CONCERNED RE: SANITARY LATERAL DIRECTION - CAN THE ANGLE BE LESSEMED WHERE IT CONNECTS TO THE MANHOLE? WAITING ON FINAL REVISIONS.
15-AUG-12	N	N	REVISED PLANS SUBMITTED ELECTRONICALLY TO J. KLINE. LOOK ACCEPTABLE.
21-AUG-12	N	Y	THIS DATE SIX (6) SETS RECEIVED - SIGNED - FROM NEFF & ASSOCIATES. LOGGED IN AND TO J. KLINE.
22-AUG-12	Y	N	FINAL PLAN APPROVAL BY W. SCHNEIDER ON 8/21/12. TWO SETS SENT TO BRIAN UHLENBROCK FROM NEFF & ASSOCIATES, 6405 YORK ROAD, PARMA HEIGHTS, OHIO 44130.
24-AUG-12	Y	N	ON THIS DATE VERL TRUSHEL FROM TRUSHEL EXCAVATING INC. IN TO PICK UP HIS COPY OF PLANS. PAID FOR SIX DAYS INSPECTION AT \$1,860.00 PLUS ONE SAN AND ONE STORM PERMIT. CHECK IN TOTAL AMOUNT OF \$2,280.00. SAN PERMIT #84387 - STORM PERMIT #84388.

STAGE 2 CURTISS-WRIGHT 2012 EXPANSION

Review Date	Approved	Revise	Comments
22-FEB-13	N	N	THIS DATE ONE (1) SET PLANS RECEIVED - PLUS ONE SET STORM WATER MANAGEMENT CALCULATIONS INCLUDING STORM SEWER DESIGN - LOGGED IN AND TO J. KUSNER
22-FEB-13	N	N	STAGE SUBMITTED

PROJECT 12-030 MATERIAL STORAGE FACILITY

STAGE 1 MATERIAL STORAGE FACILITY

Review Date	Approved	Revise	Comments
10-JUL-12	N	N	STAGE SUBMITTED
10-JUL-12	N	N	THIS DATE ONE (1) SET PLANS HAND DELIVERED BY W. SCHNEIDER - LOGGED IN AND TO J. KUSNER
18-OCT-12	N	N	The following comments were sent to the design engineer 7/18/12:

Review Date	Approved	Revise	Comments
			<ol style="list-style-type: none"> 1. Provide letter of permission from the NEORS to tie into the Cuyahoga Valley Interceptor (CVI). 2. Tie directly into the CVI mainline rather than existing service line for other property. 3. The plan view shows an existing catch basin (w/ top of casting 861.01) with two lines going in/out. The text note for this catch basin describes three lines going in/out. Please clarify.
18-OCT-12	N	N	THIS PROJECT INCORRECTLY OPENED. FILE ALREADY EXISTS - PROJECT #12-015(1) AND NAME - "STADIUM DRIVE PUMP STATION IMPROVEMENT PLANS". THE PROJECT WAS OPENED AND APPROVED UNDER #12-015(1) ON 8/13/12 BY W. SCHNEIDER - J. KUSNER ENGINEER OF RECORD.

PROJECT 12-042 CROSSCOUNTRY MORTGAGE PARKING EXPANSION

STAGE 1 CROSSCOUNTRY MORTGAGE

Review Date	Approved	Revise	Comments
05-OCT-12	N	N	STAGE SUBMITTED
05-OCT-12	N	N	THIS DATE SIX (6) SETS PLANS RECEIVED - LOGGED IN AND TO J. KLINE PER W.S.
17-OCT-12	N	Y	REVIEW COMMENTS SENT TO DESIGN ENGR. RICH CATANZRITI @ LDC, INC. STORM ONLY. PARKING LOT EXPANSION.
19-OCT-12	N	N	RECEIVED REPLY FROM DESIGNER. REVISIONS & STORM INFO E-MAILED TO J. KLINE.
24-OCT-12	N	N	SPOKE TO DESIGNER (RICH C. FROM LDC) RE: VIDEO FOR EX. STORM - COUNTY NEEDS TO VERIFY CONDITION OF SEWER.
26-OCT-12	N	N	VIDEO REVIEWED. COLLECTOR LINE APPEARS SATISFACTORY; LATERALS SHOULD BE REPLACED (BAD JOINTS).
26-OCT-12	N	N	THIS DATE RECEIVED ONE DVD AND TELEVISION INSPECTION REPORTS - LOGGED IN AND TO J. KLINE
01-NOV-12	N	N	SPOKE TO DESIGN ENGR. (RICH CANTANZRITI); LATERALS TO BE REPLACED, CLEANOUT TO BE ADDED TO EAST END OF EAST-WEST COLLECTOR PIPE (STORM). NOTES ADDED TO PLANS.
02-NOV-12	Y	N	THIS DATE TWO (2) SETS PLANS SENT TO DESIGN ENGINEER RICH CANTANZRITI AT LAND DESIGN CONSULTANTS (LDC), 9025 OSBORNE DRIVE, MENTOR, OHIO 44060.
07-NOV-12	Y	N	QUESTIONS AROSE RE: WORK TO BE DONE. EX. STORM LATERALS ARE IN UNSATISFACTORY CONDITION (FROM TV REPORT) - THESE ARE TO BE REPLACED. CLEANOUT TO BE ADDED TO EAST END OF STORM COLLECTOR PIPE.

Section A-4

Service Program*

* No service provided if section is blank

City of Brecksville

<u>Type</u>	<u>Community Total</u>
Sanitary Sewers	405,272 Feet
Manholes	2,016 (Approximately)

2012 Service Program

<u>Program</u>	<u>2012 Activity</u>
1) High Pressure Cleaning*	111,592 Feet
2) House Service	309 Calls
3) Television Inspection*	120,526 Feet
4) Construction Activities	150 Job(s)
5) Smoke and Dye Testing	17 Test(s)
6) Construction Permits Issued (Commercial)	10
(Residential)	42
7) Plan Review	10 Plan(s)
8) Capital Projects	1,452 Feet (New Sewer Lines Inspected)

*Information includes footages for sanitary (collection system) and storm sewers.

Section A-5

Community Operating Expenses

City of Brecksville
2012 Operating Expenses

<u>Activity</u>	<u>Cost</u>
1. Maintenance of Sanitary Sewerage Systems	\$537,026
2. Pump Station Operation and Maintenance	\$169,418
3. Waste Water Treatment Plant Maintenance	\$110,137
4. Engineering and/or Inspection	\$207,513
5. Capital Expenses (See Section A-6 if any)	\$655,178
6. Sanitary Overhead	\$16,610
Total Expenses:	\$1,695,882

Section A-6

Community Capital Expenses

* No service provided if section is blank

City of Brecksville

2012 Capital Expenses

Old Royalton Storm Repair	\$ 224,076
Echo Hills Closeout	\$ 460
Dewey Road Pump Station Electrical	\$ 8,329
Mill Road Lateral Repair	\$ 5,529
Echo Hills Loan Payment	\$ 133,852
Hollis Court Storm Repair	\$ 41,223
Driveway Repair	\$ 1,890
Valleybrook Storm Repair	\$ 24,327
Gatewood Storm Repair	\$ 22,968
Timber Trail Storm Repair	\$ 114,133
Glenforest Storm Repair	\$ 78,391

Total Capital Expenses: \$ 655,178

CONTACT INFORMATION

Address

Cuyahoga County Department of Public Works
 6100 West Canal Road
 Valley View, OH 44125
 Email: Publicworks@cuyahogacounty.us
 Website: Publicworks.cuyahogacounty.us

Bonita G. Teeuwen, P.E..... Director of Public Works
 Douglas L. Dillon, P.E., P.S. Design & Construction Administrator
 Michael W. Dever, MPA.....Maintenance Administrator
 Michael W. Chambers, CPAFiscal Officer
 Bryan J. Hitch..... Maintenance Superintendent

<i>Dispatch Office</i> (216) 443-8201	<i>Dispatch Email</i> PWDispatch@cuyahogacounty.us
<i>Administration</i> (216) 443-8215	<i>Inspection & Permits</i> (216) 443-8211
<i>Engineering</i> Douglas L. Dillon, P.E., P.S., Design and Construction Administrator (216) 443-8614	<i>Sewer Maintenance</i> Gary Green, Senior Supervisor (216) 443-8225
<i>Lateral Services (House Crews)</i> John Gribble, Supervisor (216) 443-8227	<i>Inflow & Infiltration</i> Suzanne Britt, Supervisor (216) 443-3533
<i>Construction</i> Mitch Holt, Supervisor (216) 443-8229	<i>Televised Inspection</i> Todd Swindell, Supervisor (216) 443-8224
<i>Sewer Jetting</i> Guy Swindell, Supervisor (216) 443-8226	<i>Pump Station Operations</i> William Applegarth, Supervisor (216) 443-8295