



2012 ANNUAL REPORT

Prepared For The:

CITY OF GARFIELD HEIGHTS



CUYAHOGA COUNTY
DEPARTMENT OF PUBLIC WORKS

TABLE OF CONTENTS

Introduction.....I

Mission Statement & Overview.....2

Appendix Description.....II

Community Streets Cleaned.....A-1

Community Streets Inspected.....A-2

Project Status.....A-3

Service Program.....A-4

Community Operating Expenses.....A-5

Community Capital Expenses.....A-6

Contact Information.....Rear Folio



CUYAHOGA COUNTY DEPARTMENT of PUBLIC WORKS

March 31, 2013

The Honorable Vic Collova
City of Garfield Heights
5407 Turney Road
Garfield Heights, Ohio 44125

Dear Mayor Collova:

It is with great pride that I present to you the 2012 Annual Report for the Cuyahoga County Department of Public Works Sanitary Service. This report contains a detailed overview of the components that bring together the agency, information on work completed within your municipality, including operating expenses over the past year. As in previous reports, we have included maps displaying the following: the cleaning and inspection of system mainlines, locations of construction activity, inflow and infiltration areas of study, house visits, and the cleaning and inspection of lateral connections, as it pertains to the service in which we provide to you.

This year has been a dynamic one for Cuyahoga County. We have implemented many changes to improve our department and this can be felt by the communities we service. We are continuously striving to incorporate new and ground breaking practices into the way we perform each day, and I am confident that this agency has the tools to offer you the highest level of both customer service and innovative technologies. The Charter's creation of the Department of Public Works has afforded us the ability to utilize a larger and more diverse work force, and thus be able to better dispatch staff to your community during high-volume rain events and natural disasters. It is our obligation to provide the most effective level of water pollution control possible.

Our joined efforts here are key to promoting regionalism and play an integral role in the further development of this region. It is my honor to serve your community and to continue to diligently meet the varying needs of all of Cuyahoga County.

Respectfully submitted,

A handwritten signature in blue ink, appearing to read 'Bonita G. Teeuwen'.

Bonita G. Teeuwen, P.E.
Director of Public Works

OVERVIEW

Originally established in 1919, the Sanitary Engineering Division was created to administer authority in matters of wastewater, storm water, and water supply management. In 2012, the Sanitary Engineering Division (formerly CCSE) became a part of the Cuyahoga County Department of Public Works, and now operates under the County Executive Ed FitzGerald.

Our focus on needs assessment, engineering feasibility studies, maintenance and repair of aging sewer lines, as well as other infrastructure-related issues, has a direct impact on commercial and residential development, job creation, and expanded tax base in the communities served by the Department of Public Works.

This Division is a major source of information and guidance that mayors, municipal engineers, and service directors rely on when making infrastructure decisions within their community. The Division has considerable experience in the maintenance of sanitary and storm sewer lines, many of which are old and have performed beyond their design life. Moreover, the Division has much expertise with respect to wastewater treatment plants and pump stations.

Public Works directs an operation which now encompasses more than 34 communities and maintains nearly 1,200 miles of sanitary sewers, treats millions of gallons of wastewater, operates 51 sewage-pumping stations, and maintains 2 wastewater treatment plants throughout Cuyahoga County. The Division also has agreements with municipal corporations for the establishment, operation, and maintenance of sanitary sewers.

Working in cooperation with the Ohio Environmental Protection Agency (Ohio EPA), the Northeast Ohio Regional Sewer District (NEORS), the City of Cleveland Division of Water, and the Cuyahoga County Board of Health; the Division manages a Capital Improvement Program (CIP) used for upgrading or replacing the existing infrastructure and for expanding sewers to non-sewered areas. The CIP includes information about project type, location, funding, preliminary engineering, and final plan development.

All operating funds for the Division are created through fees and assessments. The Division does not receive a subsidy through the County General Fund; however, it does use the General Fund's bonding capacity.

The Department of Public Works has been in the forefront of regionalism efforts, and with services provided to over half of the 59 communities within county lines, the office continues to maintain reasonable rates and improved infrastructure throughout the area.

MISSION STATEMENT

“To provide and maintain a safe and efficient regional infrastructure system for residents, employees, businesses and visitors through innovative solutions, high-quality workmanship and superior customer service.”



- Reduce the number of flooded basements by decreasing mainline blockage, minimize the inflow/infiltration of storm water in the sanitary system, and evaluate the structural integrity of entire sewerage system;
- Increase efficiency to reduce operating cost and produce more available funding for capital improvement projects;
- Operate wastewater treatment plants in compliance of National Pollution Discharge Elimination System (NPDES) permit parameters;
- Provide guidelines for new construction through use of *Uniform Standards for Sewerage Improvements*;
- Review and approve new improvement plans; and
- Provide infrastructure needs assessment for communities.

- Capital improvement planning
- Plan review and approval of all new sewer improvements within the County sewer districts
- Construction management
- Geographic information systems (GIS)
- Project design
- Engineering analysis (required for operation of facilities and the collection system)
- Operational checks (EPA permit compliance)

- Operation and maintenance of wastewater treatment plants and pumping stations
- Inspection of new wastewater collection and transportation systems within County sewer districts
- Issuance of connection permits
- Issuance of sewer builders' licenses
- Development, implementation and monitoring of safety guidelines

GOALS OF THE PUBLIC WORKS DEPARTMENT

ENGINEERING SERVICES

FACILITIES OPERATION & MAINTENANCE



ADMINISTRATIVE SUPPORT SERVICES

In addition to the extensive maintenance services we offer, our administrative support includes the following:

- Capacity, Management, Operation, and Maintenance (CMOM) Program as regulated through the US EPA to help prevent Sanitary Sewer Overflows (SSO's)
- Maps and spatial analysis for design and service management
- Geographical information systems for development and implementation
- Record keeping, as-built plans and test tee location
- Fiscal oversight of annual operating budget and capital improvement budget
- Grant and loan administration
- Licensing and permitting of over 200 contractors
- Inspection of sewers and project oversight
- Design and review of construction projects and analysis of field testing

Maintenance Services

Mainline
Sewer
Cleaning

Lateral &
Mainline
Sewer
Repair

Lateral
Cleaning
(From
Test Tee
to
Mainline)

Smoke
& Dye
Testing

Digital
Video
Inspection

Treatment
Plant &
Pump
Station
Maintenance
&
Operation

24-Hour
Call
Out
Services

SUMMARY OF SERVICE DELIVERY

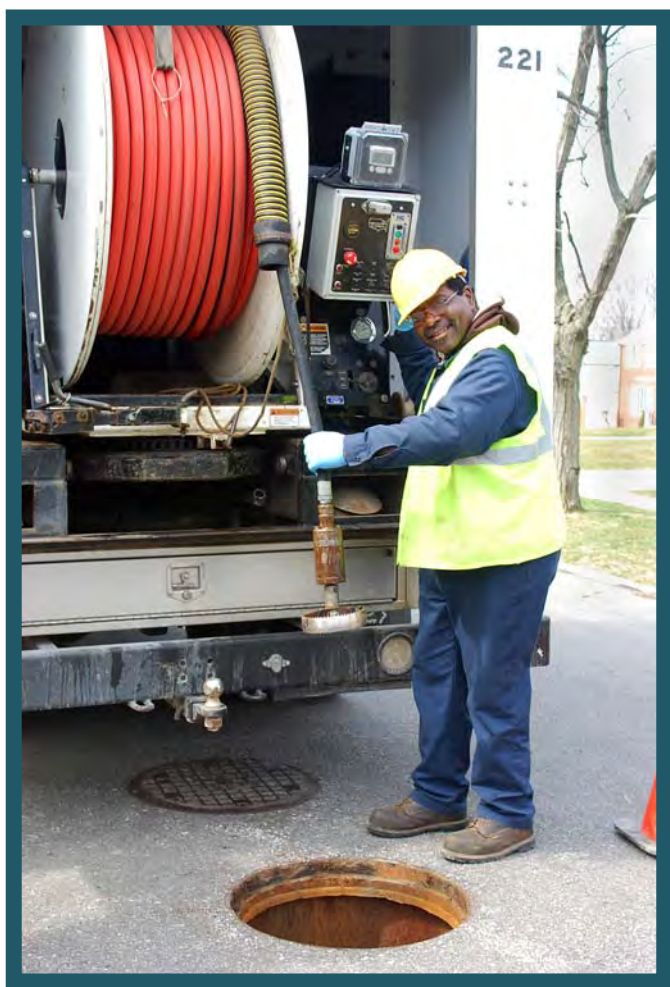
- High-pressure jetting of street sewer from the right-of-way, approximately 1,200 miles of sanitary sewers.
- Point repairs as well as capital improvement projects
- Cleaning of line from right-of-way to the house, approximately 7,500 houses annually
- Inflow and Infiltration testing and solutions
- Televising of lines for identifying possible failures or deficiencies
- Licensed wastewater operators to monitor the condition of the treatment plants and pumping stations, as well as implement upgrades and preventative maintenance.
- Emergency maintenance and 24- hour on-call team for resident issues

INTERNAL STRUCTURE OF THE DIVISION

SEWER MAINTENANCE

The Sewer Maintenance section provides a full-service program to clean, evaluate, maintain structural integrity, and perform construction on sanitary and storm sewers. The general program consists of cleaning all sanitary sewers every three years and televising all sanitary sewers every six years, which is well within the NEORSD's

"Best Management Practices" guidelines.



The Division cleans approximately 7,500 house connections annually. The goal is to reduce basement flooding through inflow/infiltration reduction, reduce blocked mains, clean service connections and maximize sewer capacity.

The Department of Public Works has an Inflow and Infiltration section within the Lateral Service Department. This section uses various tools; flow meters to monitor sanitary mainlines during both dry and wet weather conditions as well as measuring wastewater flows coming into treatment plants and water flows in storm sewers. Smoke and dye testing can isolate areas affected by excessive volumes of clean runoff into the sanitary sewer system. When used

in unison, meters can detect extraneous water while smoke and dye testing can identify illegal downspout connections. Meters can also detect rainwater infiltrating through the ground and into sanitary sewers through bad pipe joints and cracked or broken pipe.

ENGINEERING

The Engineering Section provides technical services to its customers including capital project planning, grant and loan administration, design engineering, construction management, and inspection of sanitary and storm sewers, pump stations, and wastewater treatment facilities.

This section oversees capital construction projects that include financing in the forms of grants and loans obtained from the State of Ohio, as well as saving through maintenance efficiencies. These funds are utilized for lining, repairing, replacing, and rehabilitating existing sanitary and storm sewerage systems.

The Engineering Section reviews design plans for approximately eighty-five construction projects per year on behalf of thirty-four communities. It also coordinates and analyzes the results of field testing and flow monitoring in order to detect and eliminate storm water inflow/ infiltration from the sanitary sewer system. In addition, the Engineering Section maintains files and legal libraries of pertinent federal, state, and local regulations and renders technical assistance to other sections regarding these regulations.



INSPECTION/PERMITS

The Inspection and Permit section operates in 34 suburban communities. This section's major functions include: the licensing, bonding and permitting over 200 contractors, construction inspection of sanitary and storm sewers; which includes: residential, commercial, and industrial; along with the inspection of wastewater treatment plants and pumping stations. This section also maintains the permanent records for sewerage construction projects and provides information to all County departments, engineering consulting firms, contractors, and the public.

ENVIRONMENTAL SERVICES

■ Wastewater Treatment Plants

The County operated 2 wastewater treatment package plants. These facilities treated 147 million gallons of wastewater per year. The standards are set for each facility by the Ohio EPA through the National Pollution Discharge Elimination System (NPDES) permit. The support staff consists of wastewater operators licensed by the Ohio EPA who monitor the conditions of the plants and make necessary process adjustments to meet the NPDES permit.



■ Pumping Stations

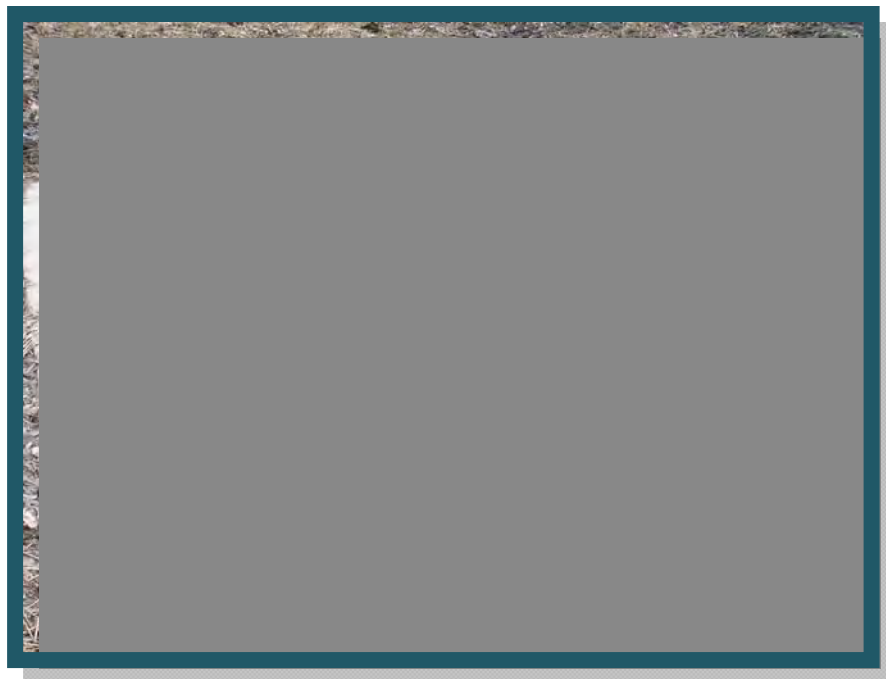
The County operates 51 pumping stations throughout the 34 service communities. A Supervisory Control and Data Acquisition (SCADA) system monitors 41 of the stations. The system provides alarms and operational status through a central computer that is accessed from a remote computer providing 24 hour monitoring. It is our goal to upgrade all County operated pump stations and to expand the SCADA system to all new projects. Our maintenance staff consists of professional mechanics enabling us to repair most problems in-house, therefore keeping costs down. Their preventive maintenance program and dedication to the job has reduced emergency call-outs and overflows.

ENVIRONMENTAL SERVICES, continued

■ Capacity, Management, Operation, and Maintenance Program (CMOM)

The CMOM Program is a set of “best management practices” that have been developed by the industry and are applied over the life cycle of the collection system. It is these general practices that are taken into consideration when a system is being reviewed by a Federal or State agency. Improvement and recommendations are provided by such agencies based on deficiencies identified in the sanitary sewer system.

The United States EPA contacted our agency in July of 2009 in response to our CMOM's Report. In general, our Management, Maintenance and Operational processes meet the standard of the United States EPA. The main issue identified by them as a deficiency relate to any sanitary sewer overflows (SSO's). As we work with the communities to eliminate these overflows, the United States EPA has notified us that we have eliminated the noted deficiencies to our CMOM's Report and that we are in compliance with these "best management practices".



INFORMATION TECHNOLOGY

The Information Technology (IT) Section provides computer and analytical support to internal end users and communities within the Department. It is responsible for the design, implementation and maintenance of geographical map-based and other relational database systems, as well as guiding data acquisition tasks throughout the Division. In addition, the computerized mapping program catalogues the location of sewer systems and performs analysis on spatial data. This ability supports the planning, designing, and maintenance of sewer systems, as well as ensuring user fees are appropriately assessed and collected. Furthermore, the mapping program now features attached permits and engineering drawings.

In 2012 the IT Section completed 24 new computer installations according to the County's cyclical replacement policy. The IT Section also assisted in the removal of multiple personal printers in favor of centralized and efficient print centers; improved the engineers' access to the Geographic Information System and related analytical tools; and continues to assist internal departments with moving to a more digital, paperless record keeping system.



FINANCE SECTION

The Finance Section provides support services to various units within the Public Works Department. Automated cost accounting programs and systems ensure accurate tracking and monitoring of expenditures, revenues, rate structures and other data that provide planning for capital projects and operational budgets. All systems and programs are operated under generally accepted accounting principles.

The Finance Section oversees an annual sanitary operating budget in excess of \$14 million and an annual capital improvement budget of \$5- \$10 million. The capital improvement plan is administered by this section and revenues, as well as expenditures, are approved and monitored for each individual improvement. Finance is responsible for accounts receivable, accounts payable, cost accounting, audit, inventory control, vehicle inventory management, capital project financing, purchasing, and the assessment of users fees.

APPENDIX DESCRIPTION*

The following appendices contain a variety of reports representing the services provided to communities in 2012. The Public Works Department follows a manhole-to-manhole, sewer segment-based accounting method for Jet Cleaning and TV Inspection maintenance services. The first two reports contain listings of the collection system cleaned and inspected for the year by street. The following report discloses the more significant projects submitted and reviewed by the Permit and Engineering sections during the year for your community. Smaller review services such as house connections or ongoing, intermittent review of large multi-phase projects spanning several years of development are not shown on this report. The final appendices are from the Finance and Billing section. These reports provide a breakdown of operating expenses, capital project costs contracted for the community, as well as additional services including house visits, inflow/infiltration studies, and construction activity. A map is enclosed showing areas where collection system mainlines were Jet cleaned and TV inspected, construction crew activity locations, house visits and if house lateral connections needed to be cleaned or inspected. The DVD provided contains a PDF file of the map, which can be copied for distribution. Adobe Corporation's free reader software is required and can be downloaded from www.adobe.com.

* Please note: These appendix reports are provided only to communities for which the specific service is provided by the Department of Public Works. For example, if regularly scheduled mainline cleaning service is not provided for your community, a map was not produced. Similarly, if project review or capital project management services are not provided to your community, then there is no corresponding report. Certain communities are provided limited maintenance on county improvement mainlines and/or facilities only.



6100 West Canal Road, Valley View, OH 44125 | **ph** 216.443.8201 | **fx** 216.443.8276

publicworks.cuyahogacounty.us | PublicWorks@cuyahogacounty.us

Section A-1

Community Streets Cleaned*

* No service provided if section is blank

Collection System Jet Cleaning - 2012

Garfield Heights

STREET	NUMBER OF SEGMENTS	JET FT
ALVIN	12	2,827
ANDOVER BOULEVARD	6	1,422
BANGOR	5	1,070
BRUNSWICK	5	837
BRUNSWICK EASEMENT	1	162
CIVIC CENTER EASEMENT	1	300
CRANWOOD PARK BOULEVARD	1	250
CRANWOOD PARKWAY	1	200
CREEKSIDE ROAD	1	104
CROFTON ROAD	1	340
DARLINGTON	9	2,492
DONOVAN DRIVE	1	370
EAST 112TH STREET	2	576
EAST 129TH STREET	1	340
EAST 132ND STREET	4	993
EAST 134TH STREET	4	983
EAST 135TH STREET	1	10
EAST 136TH STREET	1	20
EAST 141ST STREET	5	1,053
EXETER ROAD	1	172
FORESTDALE AVENUE	2	510
GARFIELD BOULEVARD	1	65
GRANGER	6	1,923
GRANNIS ROAD	11	3,109
GREENVIEW	1	300
HATHAWAY	13	3,626
HAVANA ROAD	23	5,754
HENRY STREET	7	2,002
LAWRENCE AVENUE	2	279
LINN	3	601
LITTLETON	2	658
MAPLE LEAF DRIVE	11	3,944
MCCRACKEN	9	1,712
MONICA LANE	2	419
MOUNTVIEW	4	1,184
NEO PKWY	1	288
OAK PARK BOULEVARD	16	4,539

Collection System Jet Cleaning - 2012

Garfield Heights

STREET	NUMBER OF SEGMENTS	JET FT
OAKVIEW BOULEVARD	9	2,297
OLD GRANGER	10	2,838
ORME	10	3,071
OSBORN	5	1,178
OSBORN EASEMENT	4	756
ROCKSIDE ROAD	2	381
RYBAK	1	90
SHADY OAK	12	3,436
SILVER	1	350
SUNSET	7	1,528
THRAVES	10	2,332
TONSING DRIVE	1	120
TURNEY	137	29,864
UPPER SUNSET	3	860
UPPER SUNSET EASEMENT	3	550
WALLINGFORD AVENUE	3	676
WILLARD	10	1,978
WOLF	14	2,450
WOODWARD BOULEVARD	10	3,202
YORK BOULEVARD	11	3,386
Grand Total:	440	106,777

Section A-2

Community Streets Inspected*

* No service provided if section is blank

Collection System TV Inspection - 2012

Garfield Heights

STREET	NUMBER OF SEGMENTS	TV FT
ALVIN	13	2,463
ANDOVER BOULEVARD	17	3,014
BANGOR	3	349
BRANFORD	2	366
BROOKHILL DRIVE	10	2,159
BRUNSWICK	6	1,294
CARPENTER	2	633
CHESTER	2	326
CRANWOOD PARK BOULEVARD	4	508
CREEKSIDE DRIVE	6	950
CROFTON ROAD	3	477
CUMBERLAND DRIVE	8	2,073
DARLINGTON	7	1,869
EAST 112TH STREET	5	1,126
EAST 114TH STREET	1	259
EAST 115TH STREET	1	143
EAST 129TH STREET	3	702
EAST 131ST STREET	2	395
EAST 132ND STREET	3	946
EAST 134TH STREET	4	968
EAST 135TH STREET	3	167
EAST 136TH STREET	1	20
EAST 141ST STREET	8	1,216
EAST 94TH	2	363
EXETER ROAD	9	1,667
FARMINGTON DRIVE	2	444
FORDHAM ROAD	3	753
FORESTDALE AVENUE	10	1,727
FOXCROFT	2	432
FOXCROFT EASEMENT	1	300
FRUITSIDE	1	398
GRANGER	5	1,679
GRANNIS ROAD	11	2,600
GREENVIEW	1	293
GROVE	4	942
GROVE EASEMENT	1	72
HASTINGS ROAD	4	942

Collection System TV Inspection - 2012

Garfield Heights

STREET	NUMBER OF SEGMENTS	TV FT
HATHAWAY	17	3,990
HAVANA ROAD	21	3,723
HENRY STREET	9	1,844
HORTON	2	284
HUNTER DRIVE	1	60
KIMBERLY	3	691
LINDA LANE	2	716
LINN	6	946
LITTLETON	5	1,414
MAPLE LEAF DRIVE	12	3,759
MAPLEROW	1	0
MARTIN EASEMENT	1	238
MCCRACKEN	2	143
MEADOWBROOK	1	300
MILO	6	1,650
MOUNTVIEW	4	993
NEO PKWY	2	475
OAK PARK BOULEVARD	11	2,724
OAKVIEW BOULEVARD	10	2,361
ORME	10	2,776
OSBORN	7	1,526
PAMELA DRIVE	2	363
ROBINHOOD DRIVE	1	101
ROYAL BOULEVARD	2	249
RYBAK	6	1,290
SAXON DRIVE	6	1,239
SHADY OAK	16	3,856
SHADYWAY	1	110
SHERWOOD CIRCLE	6	1,399
SILVER	1	330
SOUTH PARKWAY	1	195
SUNSET	7	1,528
THRAVES	15	3,122
THRAVES EASEMENT	1	163
TURNEY	57	12,474
UPPER SUNSET	3	852
UPPER SUNSET EASEMENT	2	210

Collection System TV Inspection - 2012

Garfield Heights

STREET	NUMBER OF SEGMENTS	TV FT
VALLEY LANE	1	249
VALLEY RANCH DRIVE	8	1,030
VERNON	1	222
WALLINGFORD AVENUE	6	948
WILLARD	14	3,021
WOLF	10	1,650
WOODWARD BOULEVARD	10	3,005
YORK BOULEVARD	10	2,786
Grand Total:	490	106,040

Section A-3

Projects Status*

* No service provided if section is blank

CCSE PROJECT REVIEWS

MUNICIPALITY GARFIELD HEIGHTS

PROJECT 12-003 CUY-ROCKSIDE RD.(C.R. 53)

STAGE 1 CUY-ROCKSIDE RD. (C.R. 53) GARFIELD HTS.

Review Date	Approved	Revise	Comments
25-JAN-12	N	N	STAGE SUBMITTED
25-JAN-12	N	N	THIS DATE ONE (1) SET PRELIMS PLUS ONE (1) TRANSMITTAL LETTER - FROM R. SAKR - LOGGED IN AND TO J. KUSNER

PROJECT 12-005 9501 GRANGER ROAD

STAGE 1 9501 GRANGER ROAD

Review Date	Approved	Revise	Comments
15-FEB-12	N	N	STAGE SUBMITTED
15-FEB-12	N	Y	ON JANUARY 18, 2012 SIX (6) SETS PLANS RECEIVED - ERRONEOUSLY LOGGED IN AS PHASE 2 OF PART OF PROJECT 11-050(1)-OVERVIEW DRIVE IN GARFIELD HEIGHTS. PLANS NOW LOGGED IN WITH PROPER "NEW PROJECT" NUMBER. ON FEBRUARY 14, 2012 TWO (2) SETS OF REVISED PLAN SHEETS C-1 THROUGH C-7 RECEIVED FOR FINAL APPROVAL. LOGGED IN UNDER THIS PLAN NUMBER AND GIVEN DIRECTLY TO JIM KUSNER.
22-FEB-12	N	Y	ON THIS DATE SIX (6) SETS PLANS HAND DELIVERED. SIGNED AND STAMPED BY CITY ENGINEER AND DESIGN ENGINEER. THIS PLAN PREVIOUSLY LOGGED IN AS STAGE 2 OF PROJECT 11-050. PLEASE SEE REVIEWS FOR THAT PROJECT NUMBER AND PHASE IF THERE IS ANY CONFUSION, BECAUSE I AM UNABLE TO DELETE ENTRIES MADE REGARDING THIS NEW PROJECT - NUMBER 12-005(1).
23-FEB-12	Y	N	PLANS APPROVED THIS DATE - TWO (2) SETS SENT TO MICHAEL E. HENRY, P.E. AT CHAGRIN VALLEY ENGINEERING, 22999 FORBES ROAD, SUITE B., CLEVELAND, 44146.
27-MAR-12	Y	N	ON FEBRUARY 27, 2012 INSPECTION AGREEMENT SIGNED AND PAID - 15 DAYS AT \$4,650.00, CHECK #5455, RECEIPT #10868. ALSO ON FEBRUARY 27, 2012 ONE SANITARY PERMIT, #84188, AND ONE STORM PERMIT, #84189, WERE ALSO PULLED AND PAID FOR WITH SAID CHECK, #5455.
11-APR-12	Y	N	THIS DATE SIX (6) SINGLE SHEETS - REVISED PAGE C-4 - HAND DELIVERED TO NCB. LOGGED IN AND TO J. KUSNER.
12-APR-12	Y	N	ON THIS DATE E-MAIL SENT FROM DOUG EASTWOOD AT MEDINA EXCAVATING (THE CONTRACTOR FOR THIS PROJECT) TO BILL SCHNEIDER, EXPLAINING HIS REASONING BEHIND THE NEW PAGE C-4 SHEETS HE FURNISHED THIS OFFICE ON WEDNESDAY, APRIL 11, 2012). BILL SCHNEIDER REPLIED BACK THAT HE APPRECIATED THE UPDATE AND FOR DOUG EASTWOOD TO CALL NCB IN PERMITS FOR SCHEDULING. SINGLE SHEET PLAN (PAGE C-4) WAS APPROVED ON THIS DATE BY J. KUSNER FOR W. SCHNEIDER. CALLED MEDINA EXCAVATING (DOUG EASTWOOD) TO SEE IF HE WANTED TO PICK UP PLAN OR HAVE INSPECTOR BRING OUT WITH HIM. NO RESPONSE. ALSO MAILED TWO C-4 PAGES TO MICHAEL E. HENRY, P.E., CHAGRIN VALLEY ENGINEERING, 22999 FORBES ROAD, SUITE B, CLEVELAND, 44146.

PROJECT 12-014 GARFIELD HEIGHTS LIBRARY

STAGE 1 GARFIELD HEIGHTS LIBRARY

Review Date	Approved	Revise	Comments
22-MAR-12	N	N	THIS DATE TWO (2) SETS PRE-LIMS RECEIVED - LOGGED IN AND TO W. SCHNEIDER PER R. SAKR
22-MAR-12	N	N	STAGE SUBMITTED
01-MAY-12	N	Y	REVIEW COMMENTS SENT (E-MAIL) TO ERICK ALLEN.
07-MAY-12	N	N	PLMB. PLANS & SAN. CALCS. RECEIVED.
09-MAY-12	N	Y	THIS DATE SIX (6) SETS PLANS RECEIVED - LOGGED IN AND TO J. KLINE
10-MAY-12	N	Y	FURTHER REVIEW COMMENTS SENT (E-MAIL) TO ERICK ALLEN.
17-MAY-12	N	Y	THIS DATE SIX (6) SETS OF REVISED CONSTRUCTION SHEETS RECEIVED FROM ERICK ALLEN AT ATWELL - LOGGED IN AND TO J. KLINE
24-MAY-12	Y	N	THIS DATE PLANS APPROVED-SANITARY ONLY. TWO SETS SENT TO ERICK ALLEN AT ATWELL, 30575 BAINBRIDGE ROAD, SUITE 180, CLEVELAND, OHIO 44139.
24-MAY-12	Y	N	Notice of Approval was E-mailed to Erick Allen at the Atwell Group.
13-JUL-12	Y	N	THIS DATE BRIAN MURPHY FROM CHIEFTAIN TRUCKING AND EXCAVATING IN TO PAY FOR INSPECTION AGREEMENT AND TWO COMM PERMITS. 7 DAYS INSPECTION AT \$310.00 IS \$2,170.00. TWO PERMITS (SAN-84346 AND STORM 84347). TOTAL CHECK AMOUNT IS \$,2590.00. CHECK # IS 35525.

Review Date	Approved	Revise	Comments
31-JUL-12	N	Y	STORM SEWERS LOWER THAN SHOWN ON PLANS. DESIGN ENGR. (ERICK ALLEN at ATWELL GROUP) NOTIFIED.
01-AUG-12	N	N	MR. ALLEN TO SENT SURVEYORS OUT TO CHECK STORM ELEVATIONS. REVISIONS TO BE SENT TO COUNTY DPW.
15-AUG-12	Y	Y	THIS DATE RECEIVED SIX (6) SETS CONSTRUCTION PLANS - REVISED AND SIGNED - LOGGED IN AND TO J. KLINE.
20-AUG-12	Y	N	ON AUGUST 17, 2012 FINAL REVISION PLANS WERE APPROVED. J. KLINE TOOK THE COPIES FOR INSPECTOR I, INSPECTOR II, AND CONTRACTOR. NCB HAS OFFICE COPY AND TWO TO SEND TO ENGINEER ERICK ALLEN AT ATWELL GROUP, 30575 BAINBRIDGE ROAD, SUITE 180, CLEVELAND, OHIO 44139.
19-NOV-12	Y	N	CALL FROM FIELD SEWER INSPECTOR: THERE IS AN EX. SAN. WYE ON SEWER MAIN NEAR PROPOSED LOCATION - CAN IT BE USED? [ANS: "YES", IF IT'S IN GOOD CONDITION, CONNECTION TO BE ENCASED IN CONCRETE.]

PROJECT 12-017 ROSEWOOD AVE. & BANCROFT AVE. SEWER IMPROV.

STAGE 1 ROSEWOOD AVE. & BANCROFT AVE. SEWER IMPROV.

Review Date	Approved	Revise	Comments
13-APR-12	N	N	STAGE SUBMITTED
13-APR-12	N	N	THIS DATE SIX (6) SETS PRE-LIMS DELIVERED THROUGH USPS. LOGGED IN AND TO J. KLINE PER W. SCHNEIDER.
03-MAY-12	N	N	REVIEW COMMENTS SENT (E-MAIL) TO JAMES SICKELS (KROCK-ESSER).
19-JUN-12	N	Y	THIS DATE SIX (6) SETS REVISED PLANS RECEIVED - LOGGED IN AND TO J. KLINE. THESE PLANS ARE FOR FINAL APPROVAL, SIGNED AND STAMPED BY CITY ENGINEER AND DESIGN ENGINEER.
02-JUL-12	N	N	Designer was advised of Test Tees to be added to the new storm laterals at the R.O.W.
02-JUL-12	Y	N	Plans approved on this date. Notice was sent to James Sickels at Krock Esser Engr., Inc.
05-JUL-12	Y	N	FINAL PLAN APPROVAL ON 7/2/12. ON 7/5/12 TWO SETS PLANS SENT TO JAMES H. SICKELS AT KROCK ESSER ENGINEERING, SUITE B, 6138 RIVERVIEW ROAD, PENINSULA, OHIO 44264.
28-SEP-12	N	Y	THIS DATE SIX (6) SETS FINAL APPROVAL PLANS LOGGED IN AND TO J. KLINE
03-OCT-12	N	N	PLANS WERE REVISED TO REFLECT ONE BID PACKAGE W/ WALLINGFORD AVE. & E. 112th ST.
04-OCT-12	Y	Y	FINAL PLAN APPROVAL 10/2/2012 - 10/4/2012 TWO SETS PLANS SENT TO JAMES H. SICKELS AT KROCK ESSER ENGINEERING, 6138 RIVERVIEW ROAD, SUITE B, PENINSULA, OHIO 44264.
25-JAN-13	Y	N	PRE-CONSTRUCTION MEETING HELD, 9:30 a.m. @ GARFIELD HTS. CITY HALL.
11-FEB-13	Y	N	MEETING #2 HELD, 9:00 a.m.

PROJECT 12-021 MC CRACKEN ROAD RECONSTRUCTION

STAGE 1 MC CRACKEN ROAD RECONSTRUCTION

Review Date	Approved	Revise	Comments
18-MAY-12	N	N	STAGE SUBMITTED
18-MAY-12	N	N	THIS DATE TWO (2) SETS PRE-LIMS RECEIVED FROM SCOTT R. BICKLEY AT KROCK ESSER ENGINEERING. GIVEN TO W. SCHNEIDER.
21-MAY-12	N	N	Review comments: 1. Sheet 22: Label existing sanitary sewer as ζ Ex. 8-inch SAN ζ and add to profile. See attached record drawing. 2. Sheet 23: Add Ex. 8-inch SAN to plan and profile. See attached record drawing. Remove dashed line between existing sanitary manhole (northeast corner of the intersection) to manhole (northwest corner of the intersection), the manhole is not a sanitary manhole, may want to remove this manhole. 3. Sheet 24: Add Ex. 8-inch SAN to plan and profile ending just before Sta. 46 00. See attached record drawing. 4. All manholes should be adjusted to grade. By GM Zavoda
31-MAY-12	N	N	Email sent out May 31, 2012: David, See my comments below: ITEM 604 - SANITARY AND STORM MANHOLE ADJUSTED TO GRADE 1. A 12" MAXIMUM MANHOLE GRADE ADJUSTMENT IS PERMITTED. ADJUSTMENT IS TO BE MADE WITH PRECAST GRADE RINGS ON PRECAST MANHOLE. A MINIMUM OF ONE (1) GRADE RING IS REQUIRED AT EACH MANHOLE. 2. MANHOLE GRADE ADJUSTMENT OF LESS THAN TWO (2) INCHES TO BE MADE WITH INFRARISER COMPOSITE RUBBER RISER RINGS AS MANUFACTURED BY EAST JORDAN IRON WORKS.

Review Date	Approved	Revise	Comments
			<p>3. ALL MANHOLE CASTINGS LOCATED IN PAVEMENT MUST HAVE MINIMUM OF ONE (1) INFRARISER COMPOSITE RUBBER RISER RING AS MANUFACTURED BY EAST JORDAN IRON WORKS.</p> <p>Because these plans are only roadway project with minor storm sewer work, the County does not need to approve or inspect this project. Although, we will give you our comments. Please remove the County signature off the title page. Please send us one (1) signed full size hard copy and one electronic copy for our records.</p> <p>Mike</p> <p>G Michael Zavoda, P.E. Sanitary Project Manager Cuyahoga County Public Works Department Division of Sanitary Engineers 2100 Superior Viaduct Cleveland, Ohio 44113 (216)348-3843 (Phone) (216)698-7595 (Fax) mzavoda@cuyahogacounty.us</p> <p>From: David B. Nicholson [mailto:dbnicholson@krockesser.com] Sent: Wednesday, May 30, 2012 2:17 PM To: Michael Zavoda <mzavoda@cuyahogacounty.us> Subject: RE: McCracken Road Reconstruction City of Garfield Heights</p> <p>Mr. Zavoda:</p> <p>A question came up in the Item 604 note. Specifically line item 5 & 6.</p> <p>ITEM 604 - SANITARY AND STORM MANHOLE ADJUSTED TO GRADE</p> <ol style="list-style-type: none"> 1. TWENTY-FOUR HOUR NOTICE OF INSPECTION IS REQUIRED PRIOR TO CONSTRUCTION. NOTIFY CUYAHOGA COUNTY DEPT. OF PUBLIC WORKS AT (216) 443-8211. 2. A 12" MAXIMUM MANHOLE GRADE ADJUSTMENT IS PERMITTED. ADJUSTMENT IS TO BE MADE WITH PRECAST GRADE RINGS ON PRECAST MANHOLE OR RED BRICK(TWO COURSES MAXIMUM) ON BRICK MANHOLE. A MINIMUM OF ONE (1) GRADE RING IS REQUIRED AT EACH MANHOLE. 3. MANHOLE GRADE ADJUSTMENT OF LESS THAN TWO (2) INCHES TO BE MADE WITH INFRARISER COMPOSITE RUBBER RISER RINGS AS MANUFACTURED BY EAST JORDAN IRON WORKS. 4. ALL MANHOLE CASTINGS LOCATED IN PAVEMENT MUST HAVE MINIMUM OF ONE (1) INFRARISER COMPOSITE RUBBER RISER RING AS MANUFACTURED BY EAST JORDAN IRON WORKS. 5. INTERNAL CHIMNEY SEALS SHALL BE INSTALLED IN ALL MANHOLES. 6. MANHOLE COVER INSERTS SHALL BE PROVIDED FOR ALL MANHOLES, REGARDLESS OF TYPE OF COVER REQUIRED. <p>Are these two statements accurate, or can they be removed from the note for this project?</p> <p>Thank you for your insight.</p> <p>If there are any questions, concerns or comments please don't hesitate to contact us.</p> <p>David B. Nicholson Krock Esser Engineering, Inc. 6138 Riverview Road Peninsula, Ohio 44264 (330) 657-2145 dbnicholson@krockesser.com</p>
06-JUN-12	N	N	<p>Recieved PDF of revised drawings on 6/6/12.The comments from the county were addressed. Place in the following directory.</p> <p>T:\CCSE_Project_ID\12\12-021</p>

PROJECT 12-026 GRAND DIVISION AVENUE STRM SWR IMPROV**STAGE 1 GRAND DIVISION AVENUE STRM SWR IMPROV**

Review Date	Approved	Revise	Comments
15-JUN-12	N	N	THIS DATE ONE SET PRE-LIMS RECEIVED FROM ANN GLIHA - LOGGED IN AND TO J. KLINE PER ANN GLIHA.
15-JUN-12	N	N	STAGE SUBMITTED
03-JUL-12	N	Y	Review Comments sent to James Sickels (Krock Esser Engr., Inc.).
20-JUL-12	N	N	ON JULY 19, 2012 SIX (6) SETS PLANS PLUS STORM CALCULATIONS & DESIGNER'S RESPONSE TO REVIEW COMMENTS RECEIVED - LOGGED IN AND TO J. KLINE ON 7/20/12.
26-JUL-12	Y	N	THIS DATE PLANS APPROVED - STORM ONLY. TWO SETS SENT TO JAMES H. SICKELS AT KROCK ESSER ENGINEERING, 6138 RIVERVIEW ROAD, SUITE B, PENINSULA, OHIO 44264.

PROJECT 12-035 MARYMOUNT BUILDING LLC SAN SWR CONN & PUMP STN ABA**STAGE 1 MARYMOUNT BUILDING LLC SAN SWR CONN & PUMP STN ABA**

Review Date	Approved	Revise	Comments
14-AUG-12	N	N	STAGE SUBMITTED
14-AUG-12	N	N	THIS DATE ONE (1) SET PLANS PLUS TRANSMITTAL LETTER FROM W. SCHNEIDER - LOGGED IN AND TO J. KUSNER
27-AUG-12	N	N	Review comments were sent from Jim Kusner to designer Todd Schiano: <ol style="list-style-type: none"> 1. Plan approval from the City Engineer will be needed prior to County Sanitary Engineer approval. 2. Plan approval from an authorized representative of Peter J. Ltd. will be needed prior to County Sanitary Engineer approval. 3. The plans must be signed and sealed by a Professional Engineer. Future submittals will not be accepted for review without being signed and sealed. 3. Label proposed work versus existing lines more clearly in the plan view on sheet 3/4. Call out elevations at tie-in points for proposed lateral work. 4. Use the Uniform Standard Typical Trench Detail in place of the detail shown on sheet 4/4. Include the Standard Detail drawing frame and title block. 5. Remove the manhole detail shown on sheet 4/4 as it is not applicable to this project.

PROJECT 12-047 MCDONALD'S REST. ROCKSIDE RD. (GARFIELD MALL)**STAGE 1 MCDONALD'S REST. ROCKSIDE RD. (GARFIELD MALL)**

Review Date	Approved	Revise	Comments
29-NOV-12	N	N	STAGE SUBMITTED
29-NOV-12	N	N	THIS DATE SIX (6) SETS PLANS RECEIVED - SIGNED FOR BY NCB - LOGGED IN AND TO J. KLINE PER W.SCHNEIDER
30-NOV-12	N	Y	REVIEW COMMENTS SENT TO DESIGN ENGR. (ERIC KRAMER). 13-POINT LIST ON FILE IN PROJECT FOLDER.
06-DEC-12	N	N	DESIGN ENGR.'S COMMENTS, ALONG WITH REVISED SHEETS C2 & C6 & PLUMBING PLANS WERE RECEIVED ELECTRONICALLY BY J. KLINE.
11-DEC-12	N	N	REPLY TO DEC. 6, 2012 INFO SENT BY ERIC KRAMER (DESIGN ENGINEER) WAS SENT VIA E-MAIL. PLANS APPEAR SATISFACTORY, REQUESTING 6 COPIES EACH OF REVISED SHEETS (APPROVED BY CITY ENGINEER).
13-DEC-12	N	N	J. KLINE HAD PHONE CONVERSATIONS WITH BOTH THE DESIGN ENGR. (ERIC KRAMER) - RE: WHY CONTRACTOR CAN'T WORK ON THE STORM SEWER WITHOUT APPROVED PLANS, & GARFIELD HTS. BLD. COMMISSIONER (BILL WERVEY) - RE: CITY ENGR. APPROVAL. SIX SETS OF REVISED PLAN SHEETS C2 & C6 ARRIVE (APPROVED BY GARFIELD HTS. ENGR. DAVID KROCK). PLANS APPEAR SATISFACTORY.
14-DEC-12	Y	N	THIS DATE PLANS APPROVED BY D. DILLON. TWO SET SENT TO ERIC C. KRAMER AT DONALD G. BOHNING AND ASSOCIATES, 7979 HUB PARKWAY, VALLEY VIEW, OHIO 44125.
21-DEC-12	Y	N	THIS DATE CONTRACTOR - SEVERINO CONST.- IN TO PAY FOR INSPECTION AGREEMENT AND PULL SAN AND STRM PERMITS. FOUR DAYS INSPECTION AT \$1,240.00 PLUS TWO PERMITS AT \$420.00 PLUS \$60.00 LICENSE FEE ON CHECK #1249 FOR A TOTAL OF \$1,720.00. JOB TO START

Review Date	Approved	Revise	Comments
08-MAR-13	N	Y	WEDNESDAY, 12/26/12. GREASE TRAP IS TO BE RELOCATED APPROX. 10' NORTHWEST OF ORIGINALLY-PROPOSED LOCATION (REVISIONS WERE BROUGHT TO OUR ATTENTION ON THIS DATE). J. KLINE IN CONTACT WITH DESIGN ENGR. OFFICE (DAVE @ D.G. BOHNING (IN ERIC KRAMER'S ABSENCE) AND THE CITY OF GARFIELD HTS. (BILL WERVEY & DAVID KROCK)) RE: REVISED SKETCH. APPEARS TO BE SATISFACTORY. SEE PROJECT FOLDER FOR ADDITIONAL COMMENTARY.

Section A-4

Service Program*

* No service provided if section is blank

City of Garfield Heights

<u>Type</u>	<u>Community Total</u>
Sanitary Sewers	474,931 Feet
Manholes	2,081 (Approximately)

2012 Service Program

<u>Program</u>	<u>2012 Activity</u>
1) High Pressure Cleaning*	106,777 Feet
2) House Service	1,007 Calls
3) Television Inspection*	106,040 Feet
4) Construction Activities	539 Job(s)
5) Smoke and Dye Testing	2 Test(s)
6) Construction Permits Issued (Commercial)	7
(Residential)	4
7) Plan Review	8 Plan(s)
8) Capital Projects	1,952 Feet (New Sewer Lines Inspected)

*Information includes footages for sanitary (collection system) and storm sewers.

Section A-5

Community Operating Expenses

City of Garfield Heights

2012 Operating Expenses

<u>Activity</u>	<u>Cost</u>
1. Maintenance of Sanitary Sewerage Systems	\$941,826
2. Pump Station Operation and Maintenance	\$16,960
3. Waste Water Treatment Plant Maintenance	\$ 0
4. Engineering and/or Inspection	\$103,360
5. Capital Expenses (See Section A-6 if any)	\$640,669
6. Sanitary Overhead	\$9,566
Total Expenses:	\$1,712,381

Section A-6

Community Capital Expenses

* No service provided if section is blank

City of Garfield Heights

2012 Capital Expenses

Grannis/Thraves Sewer	\$ 340,428
Rosewood/Bancroft Repair	\$ 16,625
Catch Basin Reconstruction	\$ 85,213
North Granger/E. 88th Sewer Repair	\$ 163,842
Grannis/Thraves Engineering	\$ 5,868
Grand Division Sewer Repair	\$ 9,500
Wallingford Sewer Repair	\$ 3,000
Ohio Treasurer (Broadway Spill)	\$ 494
North Granger Loan	\$ 15,699

Total Capital Expenses: \$ 640,669

CONTACT INFORMATION

Address

Cuyahoga County Department of Public Works
 6100 West Canal Road
 Valley View, OH 44125
 Email: Publicworks@cuyahogacounty.us
 Website: Publicworks.cuyahogacounty.us

Bonita G. Teeuwen, P.E..... Director of Public Works
 Douglas L. Dillon, P.E., P.S. Design & Construction Administrator
 Michael W. Dever, MPA.....Maintenance Administrator
 Michael W. Chambers, CPAFiscal Officer
 Bryan J. Hitch..... Maintenance Superintendent

<i>Dispatch Office</i> (216) 443-8201	<i>Dispatch Email</i> PWDDispatch@cuyahogacounty.us
<i>Administration</i> (216) 443-8215	<i>Inspection & Permits</i> (216) 443-8211
<i>Engineering</i> Douglas L. Dillon, P.E., P.S., Design and Construction Administrator (216) 443-8614	<i>Sewer Maintenance</i> Gary Green, Senior Supervisor (216) 443-8225
<i>Lateral Services (House Crews)</i> John Gribble, Supervisor (216) 443-8227	<i>Inflow & Infiltration</i> Suzanne Britt, Supervisor (216) 443-3533
<i>Construction</i> Mitch Holt, Supervisor (216) 443-8229	<i>Televised Inspection</i> Todd Swindell, Supervisor (216) 443-8224
<i>Sewer Jetting</i> Guy Swindell, Supervisor (216) 443-8226	<i>Pump Station Operations</i> William Applegarth, Supervisor (216) 443-8295