



2012 ANNUAL REPORT

Prepared For The:

CITY OF MIDDLEBURG HEIGHTS



CUYAHOGA COUNTY
DEPARTMENT OF PUBLIC WORKS

TABLE OF CONTENTS

Introduction.....I

Mission Statement & Overview.....2

Appendix Description.....II

Community Streets Cleaned.....A-1

Community Streets Inspected.....A-2

Project Status.....A-3

Service Program.....A-4

Community Operating Expenses.....A-5

Community Capital Expenses.....A-6

Contact Information.....Rear Folio



CUYAHOGA COUNTY DEPARTMENT of PUBLIC WORKS

March 31, 2013

The Honorable Gary W. Starr
City of Middleburg Heights
15700 E. Bagley Road
Middleburg Heights, Ohio 44130

Dear Mayor Starr:

It is with great pride that I present to you the 2012 Annual Report for the Cuyahoga County Department of Public Works Sanitary Service. This report contains a detailed overview of the components that bring together the agency, information on work completed within your municipality, including operating expenses over the past year. As in previous reports, we have included maps displaying the following: the cleaning and inspection of system mainlines, locations of construction activity, inflow and infiltration areas of study, house visits, and the cleaning and inspection of lateral connections, as it pertains to the service in which we provide to you.

This year has been a dynamic one for Cuyahoga County. We have implemented many changes to improve our department and this can be felt by the communities we service. We are continuously striving to incorporate new and ground breaking practices into the way we perform each day, and I am confident that this agency has the tools to offer you the highest level of both customer service and innovative technologies. The Charter's creation of the Department of Public Works has afforded us the ability to utilize a larger and more diverse work force, and thus be able to better dispatch staff to your community during high-volume rain events and natural disasters. It is our obligation to provide the most effective level of water pollution control possible.

Our joined efforts here are key to promoting regionalism and play an integral role in the further development of this region. It is my honor to serve your community and to continue to diligently meet the varying needs of all of Cuyahoga County.

Respectfully submitted,

A handwritten signature in blue ink, appearing to read 'Bonita G. Teeuwen'.

Bonita G. Teeuwen, P.E.
Director of Public Works

OVERVIEW

Originally established in 1919, the Sanitary Engineering Division was created to administer authority in matters of wastewater, storm water, and water supply management. In 2012, the Sanitary Engineering Division (formerly CCSE) became a part of the Cuyahoga County Department of Public Works, and now operates under the County Executive Ed FitzGerald.

Our focus on needs assessment, engineering feasibility studies, maintenance and repair of aging sewer lines, as well as other infrastructure-related issues, has a direct impact on commercial and residential development, job creation, and expanded tax base in the communities served by the Department of Public Works.

This Division is a major source of information and guidance that mayors, municipal engineers, and service directors rely on when making infrastructure decisions within their community. The Division has considerable experience in the maintenance of sanitary and storm sewer lines, many of which are old and have performed beyond their design life. Moreover, the Division has much expertise with respect to wastewater treatment plants and pump stations.

Public Works directs an operation which now encompasses more than 34 communities and maintains nearly 1,200 miles of sanitary sewers, treats millions of gallons of wastewater, operates 51 sewage-pumping stations, and maintains 2 wastewater treatment plants throughout Cuyahoga County. The Division also has agreements with municipal corporations for the establishment, operation, and maintenance of sanitary sewers.

Working in cooperation with the Ohio Environmental Protection Agency (Ohio EPA), the Northeast Ohio Regional Sewer District (NEORS), the City of Cleveland Division of Water, and the Cuyahoga County Board of Health; the Division manages a Capital Improvement Program (CIP) used for upgrading or replacing the existing infrastructure and for expanding sewers to non-sewered areas. The CIP includes information about project type, location, funding, preliminary engineering, and final plan development.

All operating funds for the Division are created through fees and assessments. The Division does not receive a subsidy through the County General Fund; however, it does use the General Fund's bonding capacity.

The Department of Public Works has been in the forefront of regionalism efforts, and with services provided to over half of the 59 communities within county lines, the office continues to maintain reasonable rates and improved infrastructure throughout the area.

MISSION STATEMENT

“To provide and maintain a safe and efficient regional infrastructure system for residents, employees, businesses and visitors through innovative solutions, high-quality workmanship and superior customer service.”



- Reduce the number of flooded basements by decreasing mainline blockage, minimize the inflow/infiltration of storm water in the sanitary system, and evaluate the structural integrity of entire sewerage system;
 - Increase efficiency to reduce operating cost and produce more available funding for capital improvement projects;
 - Operate wastewater treatment plants in compliance of National Pollution Discharge Elimination System (NPDES) permit parameters;
 - Provide guidelines for new construction through use of *Uniform Standards for Sewerage Improvements*;
 - Review and approve new improvement plans; and
 - Provide infrastructure needs assessment for communities.
-
- Capital improvement planning
 - Plan review and approval of all new sewer improvements within the County sewer districts
 - Construction management
 - Geographic information systems (GIS)
 - Project design
 - Engineering analysis (required for operation of facilities and the collection system)
 - Operational checks (EPA permit compliance)
-
- Operation and maintenance of wastewater treatment plants and pumping stations
 - Inspection of new wastewater collection and transportation systems within County sewer districts
 - Issuance of connection permits
 - Issuance of sewer builders' licenses
 - Development, implementation and monitoring of safety guidelines

GOALS OF THE PUBLIC WORKS DEPARTMENT

ENGINEERING SERVICES

FACILITIES OPERATION & MAINTENANCE



ADMINISTRATIVE SUPPORT SERVICES

In addition to the extensive maintenance services we offer, our administrative support includes the following:

- Capacity, Management, Operation, and Maintenance (CMOM) Program as regulated through the US EPA to help prevent Sanitary Sewer Overflows (SSO's)
- Maps and spatial analysis for design and service management
- Geographical information systems for development and implementation
- Record keeping, as-built plans and test tee location
- Fiscal oversight of annual operating budget and capital improvement budget
- Grant and loan administration
- Licensing and permitting of over 200 contractors
- Inspection of sewers and project oversight
- Design and review of construction projects and analysis of field testing

Maintenance Services

Mainline
Sewer
Cleaning

Lateral &
Mainline
Sewer
Repair

Lateral
Cleaning
(From
Test Tee
to
Mainline)

Smoke
& Dye
Testing

Digital
Video
Inspection

Treatment
Plant &
Pump
Station
Maintenance
&
Operation

24-Hour
Call
Out
Services

SUMMARY OF SERVICE DELIVERY

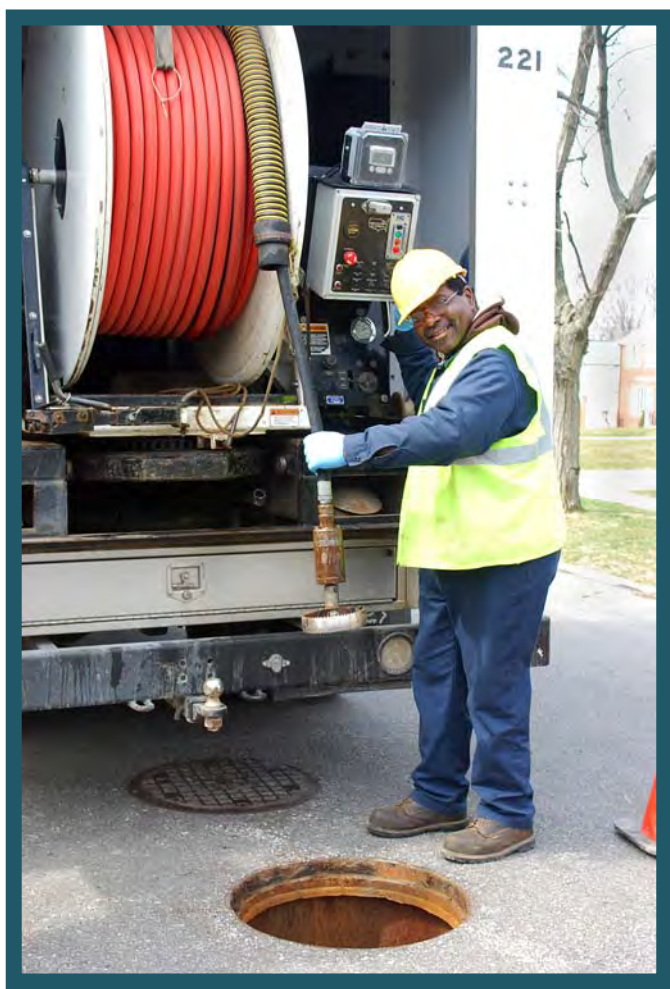
- High-pressure jetting of street sewer from the right-of-way, approximately 1,200 miles of sanitary sewers.
- Point repairs as well as capital improvement projects
- Cleaning of line from right-of-way to the house, approximately 7,500 houses annually
- Inflow and Infiltration testing and solutions
- Televising of lines for identifying possible failures or deficiencies
- Licensed wastewater operators to monitor the condition of the treatment plants and pumping stations, as well as implement upgrades and preventative maintenance.
- Emergency maintenance and 24- hour on-call team for resident issues

INTERNAL STRUCTURE OF THE DIVISION

SEWER MAINTENANCE

The Sewer Maintenance section provides a full-service program to clean, evaluate, maintain structural integrity, and perform construction on sanitary and storm sewers. The general program consists of cleaning all sanitary sewers every three years and televising all sanitary sewers every six years, which is well within the NEORSD's

"Best Management Practices" guidelines.



The Division cleans approximately 7,500 house connections annually. The goal is to reduce basement flooding through inflow/infiltration reduction, reduce blocked mains, clean service connections and maximize sewer capacity.

The Department of Public Works has an Inflow and Infiltration section within the Lateral Service Department. This section uses various tools; flow meters to monitor sanitary mainlines during both dry and wet weather conditions as well as measuring wastewater flows coming into treatment plants and water flows in storm sewers. Smoke and dye testing can isolate areas affected by excessive volumes of clean runoff into the sanitary sewer system. When used

in unison, meters can detect extraneous water while smoke and dye testing can identify illegal downspout connections. Meters can also detect rainwater infiltrating through the ground and into sanitary sewers through bad pipe joints and cracked or broken pipe.

ENGINEERING

The Engineering Section provides technical services to its customers including capital project planning, grant and loan administration, design engineering, construction management, and inspection of sanitary and storm sewers, pump stations, and wastewater treatment facilities.

This section oversees capital construction projects that include financing in the forms of grants and loans obtained from the State of Ohio, as well as saving through maintenance efficiencies. These funds are utilized for lining, repairing, replacing, and rehabilitating existing sanitary and storm sewerage systems.

The Engineering Section reviews design plans for approximately eighty-five construction projects per year on behalf of thirty-four communities. It also coordinates and analyzes the results of field testing and flow monitoring in order to detect and eliminate storm water inflow/ infiltration from the sanitary sewer system. In addition, the Engineering Section maintains files and legal libraries of pertinent federal, state, and local regulations and renders technical assistance to other sections regarding these regulations.



INSPECTION/PERMITS

The Inspection and Permit section operates in 34 suburban communities. This section's major functions include: the licensing, bonding and permitting over 200 contractors, construction inspection of sanitary and storm sewers; which includes: residential, commercial, and industrial; along with the inspection of wastewater treatment plants and pumping stations. This section also maintains the permanent records for sewerage construction projects and provides information to all County departments, engineering consulting firms, contractors, and the public.

ENVIRONMENTAL SERVICES

■ Wastewater Treatment Plants

The County operated 2 wastewater treatment package plants. These facilities treated 147 million gallons of wastewater per year. The standards are set for each facility by the Ohio EPA through the National Pollution Discharge Elimination System (NPDES) permit. The support staff consists of wastewater operators licensed by the Ohio EPA who monitor the conditions of the plants and make necessary process adjustments to meet the NPDES permit.



■ Pumping Stations

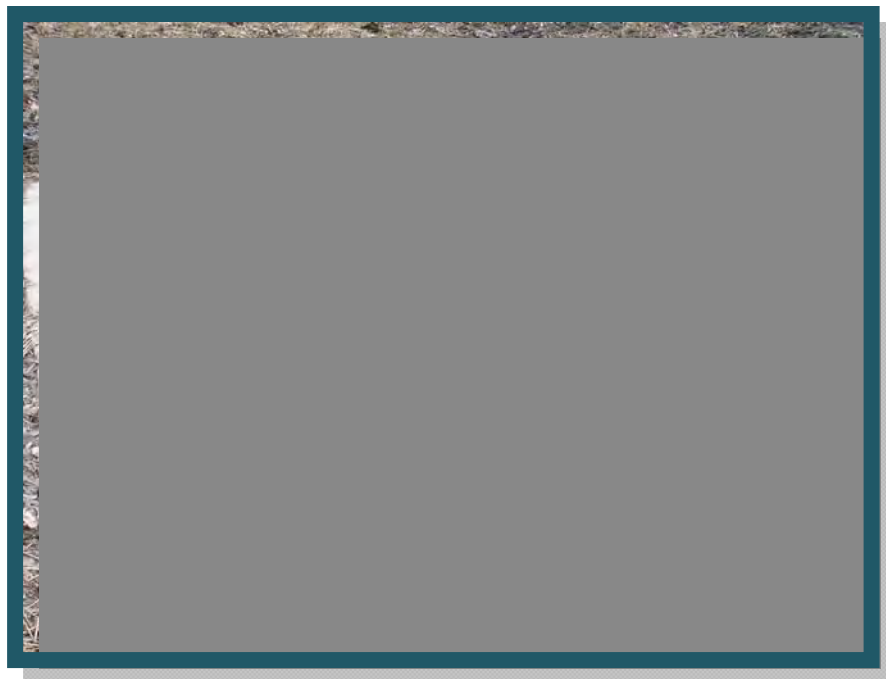
The County operates 51 pumping stations throughout the 34 service communities. A Supervisory Control and Data Acquisition (SCADA) system monitors 41 of the stations. The system provides alarms and operational status through a central computer that is accessed from a remote computer providing 24 hour monitoring. It is our goal to upgrade all County operated pump stations and to expand the SCADA system to all new projects. Our maintenance staff consists of professional mechanics enabling us to repair most problems in-house, therefore keeping costs down. Their preventive maintenance program and dedication to the job has reduced emergency call-outs and overflows.

ENVIRONMENTAL SERVICES, continued

■ Capacity, Management, Operation, and Maintenance Program (CMOM)

The CMOM Program is a set of “best management practices” that have been developed by the industry and are applied over the life cycle of the collection system. It is these general practices that are taken into consideration when a system is being reviewed by a Federal or State agency. Improvement and recommendations are provided by such agencies based on deficiencies identified in the sanitary sewer system.

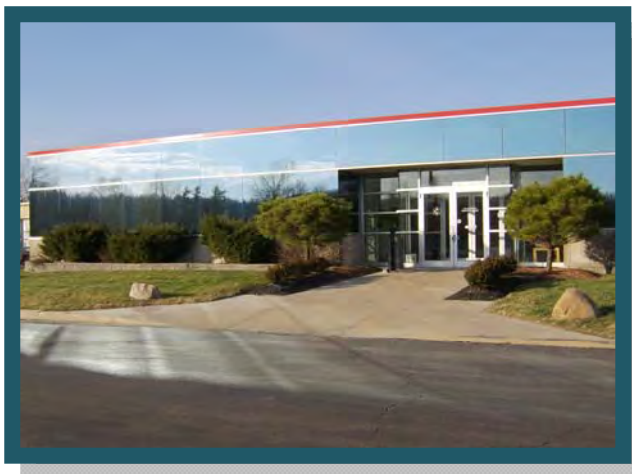
The United States EPA contacted our agency in July of 2009 in response to our CMOM's Report. In general, our Management, Maintenance and Operational processes meet the standard of the United States EPA. The main issue identified by them as a deficiency relate to any sanitary sewer overflows (SSO's). As we work with the communities to eliminate these overflows, the United States EPA has notified us that we have eliminated the noted deficiencies to our CMOM's Report and that we are in compliance with these "best management practices".



INFORMATION TECHNOLOGY

The Information Technology (IT) Section provides computer and analytical support to internal end users and communities within the Department. It is responsible for the design, implementation and maintenance of geographical map-based and other relational database systems, as well as guiding data acquisition tasks throughout the Division. In addition, the computerized mapping program catalogues the location of sewer systems and performs analysis on spatial data. This ability supports the planning, designing, and maintenance of sewer systems, as well as ensuring user fees are appropriately assessed and collected. Furthermore, the mapping program now features attached permits and engineering drawings.

In 2012 the IT Section completed 24 new computer installations according to the County's cyclical replacement policy. The IT Section also assisted in the removal of multiple personal printers in favor of centralized and efficient print centers; improved the engineers' access to the Geographic Information System and related analytical tools; and continues to assist internal departments with moving to a more digital, paperless record keeping system.



FINANCE SECTION

The Finance Section provides support services to various units within the Public Works Department. Automated cost accounting programs and systems ensure accurate tracking and monitoring of expenditures, revenues, rate structures and other data that provide planning for capital projects and operational budgets. All systems and programs are operated under generally accepted accounting principles.

The Finance Section oversees an annual sanitary operating budget in excess of \$14 million and an annual capital improvement budget of \$5- \$10 million. The capital improvement plan is administered by this section and revenues, as well as expenditures, are approved and monitored for each individual improvement. Finance is responsible for accounts receivable, accounts payable, cost accounting, audit, inventory control, vehicle inventory management, capital project financing, purchasing, and the assessment of users fees.

APPENDIX DESCRIPTION*

The following appendices contain a variety of reports representing the services provided to communities in 2012. The Public Works Department follows a manhole-to-manhole, sewer segment-based accounting method for Jet Cleaning and TV Inspection maintenance services. The first two reports contain listings of the collection system cleaned and inspected for the year by street. The following report discloses the more significant projects submitted and reviewed by the Permit and Engineering sections during the year for your community. Smaller review services such as house connections or ongoing, intermittent review of large multi-phase projects spanning several years of development are not shown on this report. The final appendices are from the Finance and Billing section. These reports provide a breakdown of operating expenses, capital project costs contracted for the community, as well as additional services including house visits, inflow/infiltration studies, and construction activity. A map is enclosed showing areas where collection system mainlines were Jet cleaned and TV inspected, construction crew activity locations, house visits and if house lateral connections needed to be cleaned or inspected. The DVD provided contains a PDF file of the map, which can be copied for distribution. Adobe Corporation's free reader software is required and can be downloaded from www.adobe.com.

* Please note: These appendix reports are provided only to communities for which the specific service is provided by the Department of Public Works. For example, if regularly scheduled mainline cleaning service is not provided for your community, a map was not produced. Similarly, if project review or capital project management services are not provided to your community, then there is no corresponding report. Certain communities are provided limited maintenance on county improvement mainlines and/or facilities only.



6100 West Canal Road, Valley View, OH 44125 | **ph** 216.443.8201 | **fx** 216.443.8276

publicworks.cuyahogacounty.us | PublicWorks@cuyahogacounty.us

Section A-1

Community Streets Cleaned*

* No service provided if section is blank

Collection System Jet Cleaning - 2012

Middleburg Heights

STREET	NUMBER OF SEGMENTS	JET FT
ALAN PARKWAY	6	1,695
ALI AVENUE	5	1,002
BAGLEY EASEMENT	6	1,194
BARDBURY	9	2,539
BARRIEMORE	4	986
BENEDICT COURT	8	2,346
BENEDICT DRIVE	4	544
BIG CREEK EASEMENT	2	290
BIG CREEK PARKWAY	16	4,472
BLUE SPRUCE OVAL	1	236
BRIARCLIFF EASEMENT	1	250
BRIARCLIFF PARKWAY	11	2,334
BRINBOURNE	6	1,742
BROOKSIDE PARKWAY	1	355
BUCKINGHAM COURT	2	301
CLAREMONT	5	863
COMMERCE CIRCLE	2	219
COTTONWOOD OVAL	1	208
CRAIGMERE DRIVE	14	3,399
DARWIN PLACE	5	959
DOGWOOD CIRCLE	3	630
EATON COURT	1	288
ELDERDALE	4	1,207
ELISE DRIVE	4	1,182
ELMDALE	2	533
ENGLE EASEMENT	9	2,115
ENGLE LAKE DRIVE	4	824
ENGLE LAKE EASEMENT	3	681
ENGLE ROAD	17	4,406
ENGLEWOOD DRIVE	1	360
FARNUM	6	1,294
FOREST OVAL	4	725
FOWLES EASEMENT	1	162
FOWLES ROAD	1	354
FRANKE	6	1,658
FREEWAY CIRCLE	12	1,445
FRY	3	829

Collection System Jet Cleaning - 2012

Middleburg Heights

STREET	NUMBER OF SEGMENTS	JET FT
GALEMORE DRIVE	6	1,525
GLENRIDGE	12	2,820
GRANT BOULEVARD	9	2,278
HEATHER LANE	6	1,079
HEMLOCK LANE	1	348
HICKOX BOULEVARD	9	2,509
HUMPHREY	1	308
INDIAN CREEK DRIVE	1	220
JEFFERSON PARK	5	1,038
KIWANIS DRIVE	7	1,574
LAKE ABRAM DRIVE	2	721
LANIER DRIVE	3	1,113
LEXINGTON GREEN	1	169
LUCERNE DRIVE	10	2,294
LUCERNE EASEMENT	10	2,288
MARKAL DRIVE	9	1,566
MAUREEN DRIVE	4	1,043
MIDDLEBROOK BOULEVARD	23	6,492
MIDDLEBROOK EASEMENT	1	57
MIDDLEBURG HEIGHTS BOULEVARD	1	10
NETHERSOLE DRIVE	3	586
NEWPORT LANE	3	380
NORMANDIE BOULEVARD	11	2,510
NORMANDIE EASEMENT	6	1,233
OLD OAK BOULEVARD	3	832
PACKARD	3	402
PACKARD CIRCLE	5	765
PARKLAWN	5	1,486
PAULA DRIVE	17	3,459
PAULA EASEMENT	2	360
PECAN OVAL	1	212
PINEWOOD DRIVE	2	444
RAGALL PARKWAY	18	4,319
RAMONA DRIVE	6	1,299
REVERE CIRCLE	8	1,959
ROSBOUGH DRIVE	4	881
ROSBOUGH EASEMENT	2	160

Collection System Jet Cleaning - 2012

Middleburg Heights

STREET	NUMBER OF SEGMENTS	JET FT
RUGGIERO CIRCLE	1	150
SANDALHAVEN DRIVE	6	1,815
SHAWNEE EASEMENT	4	1,590
SHELBURNE DRIVE	1	230
SHELDON	1	325
SPRAGUE EASEMENT	5	1,237
SPRAGUE ROAD	12	3,463
STONYBROOK DRIVE	2	630
STROUD	6	1,827
SUTTON PLACE	1	207
TRENTON TRAIL	1	100
WEBSTER	17	3,413
WENDY	3	803
WEST 130TH STREET	1	341
WESTER	1	148
WHITE OAK CIRCLE	1	200
WILLIAMSBURG COURT	12	3,268
WOOD CREEK DRIVE	7	1,234
Grand Total:	492	116,347

Section A-2

Community Streets Inspected*

* No service provided if section is blank

Collection System TV Inspection - 2012

Middleburg Heights

STREET	NUMBER OF SEGMENTS	TV FT
ALAN PARKWAY	12	2,991
ARROWHEAD TRAIL	7	1,378
BAGLEY EASEMENT	4	796
BALDWIN RESERVE	12	1,608
BARDBURY	7	1,936
BARRIEMORE	5	1,036
BARTHOLOMEW DRIVE	7	1,371
BELFAIR DRIVE	8	1,801
BELMEADOW DRIVE	5	877
BENEDICT COURT	12	3,384
BLUE SPRUCE OVAL	1	233
BRIARCLIFF PARKWAY	8	1,412
BRINBOURNE	7	1,915
BROOKSTONE DRIVE	6	1,300
BROOKSTONE TRAIL	4	1,201
BYRON BOULEVARD	3	762
CHEROKEE TRAIL	2	35
CHIPPEWA TRAIL	9	2,384
CLAREMONT	8	1,392
COTTONWOOD OVAL	1	207
CRAIGMERE DRIVE	16	4,162
DEER RUN DR	3	643
DELAWARE	6	1,429
DOGWOOD CIRCLE	1	356
EASTLAND	10	2,838
EATON COURT	1	290
EDEN LANE	2	282
ELDERDALE	3	975
ELISE DRIVE	2	583
ELMDALE	2	421
ENGLEWOOD DRIVE	22	5,002
ERWIN COURT	1	215
FAIRWEATHER DRIVE	6	1,399
FIRST	6	2,068
FOREST LANE	1	112
FRANKE	5	1,317
GALEMORE DRIVE	11	2,685

Collection System TV Inspection - 2012

Middleburg Heights

STREET	NUMBER OF SEGMENTS	TV FT
GLENRIDGE	8	1,995
GRANT BOULEVARD	8	1,863
GRANT EASE	1	115
HEATHER LANE	5	1,052
HEMLOCK LANE	1	343
HICKOX BOULEVARD	8	2,249
HUMPHREY	1	307
INDUSTRIAL BOULEVARD	2	384
IVY COURT	10	1,899
JEFFERSON PARK	7	1,702
KIWANIS DRIVE	7	1,307
KLEIN DRIVE	5	1,429
LAKE ABRAM DRIVE	2	722
LANIER DRIVE	3	1,005
LEXINGTON GREEN	3	734
MARKAL DRIVE	2	289
MAUREEN DRIVE	4	1,037
MIDDLEBROOK BOULEVARD	19	5,237
MOHAWK TRAIL	6	1,045
MORNINGSIDE	1	134
NEWTON	15	2,849
NORTH WINDING OAK DRIVE	2	477
OLD OAK BOULEVARD	10	2,560
OLD OAK EASEMENT	5	1,562
OLD PLEASANT VALLEY	3	656
PACKARD	4	740
PACKARD CIRCLE	3	528
PAULA DRIVE	17	3,181
PEARL ROAD	2	451
PECAN OVAL	1	214
PINEVIEW COURT	3	757
PRINCETON PLACE	2	568
RAGALL PARKWAY	13	2,959
RAMONA DRIVE	6	1,287
ROBERT DRIVE	5	1,385
ROSBOUGH DRIVE	3	643
ROXBORO DRIVE	2	606

Collection System TV Inspection - 2012

Middleburg Heights

STREET	NUMBER OF SEGMENTS	TV FT
SANDALHAVEN DRIVE	6	1,775
SARATOGA ROAD	10	1,381
SENECA TRAIL	1	102
SHAWNEE EASEMENT	6	2,730
SHAWNEE TRAIL	9	2,700
SHELBURNE DRIVE	3	630
SHELDON EASEMENT	1	284
SMITH	2	89
SPRINGDALE DRIVE	6	1,152
SQUIRREL RUN DRIVE	4	677
STONYBROOK DRIVE	4	1,137
STROUD	7	2,084
SUTTON PLACE	1	205
TRENTON TRAIL	6	1,823
UHLIN DRIVE	6	1,752
UHLIN EASEMENT	2	195
WEBSTER	6	1,762
WENDY	1	339
WEST ROXBORO	1	300
WILLIAMSBURG COURT	9	2,343
WINDING OAK DRIVE	4	648
WINONA CIRCLE	3	421
WOOD CREEK DRIVE	7	1,226
YORKTOWN LANE	3	924
Grand Total:	533	125,746

Section A-3

Projects Status*

* No service provided if section is blank

CCSE PROJECT REVIEWS

MUNICIPALITY MIDDLEBURG HEIGHTS

PROJECT 12-010 SOUTHWEST GEN. HEALTH CENTER-EMER. DEPT. & BED TOW

STAGE 1 SOUTHWEST GEN. HEALTH CENTER-EMER. DEPT. & BED TOW

Review Date	Approved	Revise	Comments
12-MAR-12	N	N	THIS DATE RECEIVED TWO COPIES EACH OF: SHEET C0103-SITE PREPARATION PLAN; SHEET C0401-SITE PREPARATION DETAILS; SHEET P0051-PLUMBING SITE PLAN. LOGGED IN AND TO W. SCHNEIDER
12-MAR-12	N	N	THIS DATE RECEIVED CALL FROM W. SCHNEIDER - AFOREMENTIONED PLANS TO BE GIVEN TO J. KLINE.
12-MAR-12	N	N	STAGE SUBMITTED
16-APR-12	N	Y	REVIEW COMMENTS SENT (E-MAIL) TO ROGER NEWBERRY (BENZA & ASSOC.).
17-MAY-12	N	N	Designer's (Roger Newberry) response to our Review Comments was received.
22-MAY-12	N	N	Updated plumbing plans were received by J. Kline.
23-MAY-12	N	N	Revised plans received by J. Kline (E-mailed).
25-MAY-12	N	N	Revisions look mostly satisfactory. The 24' of sanitary sewer connecting the garage manhole to the new sanitary line is to be upsized to a 6" from a 4". A Cleanout/Test Tee is to be at the 90-degree bend (already shown).
30-MAY-12	N	N	5 SMALL SETS - 1 LARGE SET. GIVEN TO JEN KLINE
31-MAY-12	Y	N	THIS DATE PROJECT APPROVED. TWO SETS (SMALL) SENT TO ROGER C. NEWBERRY, P.E., MICHAEL BENZA & ASSOCIATES, INC., 6860 WEST SNOWVILLE ROAD, BRECKSVILLE, OHIO 44141. LARGE SET KEPT AS OFFICE COPY.
01-JUN-12	Y	N	E-mail sent to Roger Newberry (designer) informing him of County DPW approval.
26-JUN-12	Y	N	MR. EXCAVATOR IS CONTRACTOR ON THIS JOB. CAME IN THIS DATE WITH A CHECK IN THE AMOUNT OF \$4,450.00 BROKEN THIS WAY - \$4,030.00 FOR THIRTEEN DAYS INSPECTION AT \$310.00 PER DAY - TWO PERMITS AT \$210.00 FOR TOTAL OF \$420.00 - ONE SAN AND ONE STORM. WORK SCHEDULED TO BEGIN ON THURSDAY, JUNE 28, 2012.
09-JUL-12	N	N	Ex. Sanitary MH by building will be under foundation wall. Designer sends revisions to J. Kline. MH to be relocated southwest of ex. location. 10" san. sewer to building to be replaced.
11-JUL-12	N	N	Review Comments sent to the designer (Roger Newberry). New San. MH or relocating existing? How will flow be maintained during relocation of the manhole? What material is the MH constructed of? What pipe material will be used on the replaced 10" san. heading south to the building out of the to-be-relocated manhole?
16-JUL-12	Y	Y	ON THIS DATE REVISED PLANS FOR THIS PROJECT WERE APPROVED BY W. SCHNEIDER AND HAND DELIVERED TO NCB. LARGE SET FOR OFFICE COPY, 1/2 SETS TO BE DISTRIBUTED IN THE USUAL MANNER. TWO HALF SETS SENT TO ROGER C. NEWBERRY, P.E., AT MICHAEL BENZA & ASSOC., CONSULTING ENGINEERS & SURVEYORS, 6860 WEST SNOWVILLE RD., SUITE 100, BRECKSVILLE, OHIO 44141.
07-AUG-12	N	Y	PVC SCH 40 SAN. SEWERS APPARENTLY INSTALLED UNDER PROPOSED PARKING GARAGE (WITHOUT COUNTY SAN. APPROVAL OR INSPECTION). TO BE REMOVED & REPLACED WITH DUCTILE IRON PIPE.

PROJECT 12-013 METRO HEALTH MIDDLEBURG HTS. HEALTH CENTER

STAGE 1 METRO HEALTH MIDDLEBURG HTS. HEALTH CENTER

Review Date	Approved	Revise	Comments
20-MAR-12	N	N	STAGE SUBMITTED
20-MAR-12	N	N	THIS DATE TWO (2) SETS PRE-LIMS RECEIVED VIA FED-EX PLUS ONE SET STORM SEWER COMPUTATION - LOGGED IN AND TO W. SCHNEIDER
03-MAY-12	N	Y	REVIEW COMMENTS SENT (E-MAIL) TO JASON PETCHAL @ EMH&T.
27-JUN-12	N	Y	E-mail sent to the Designer (Jason Petchal at EMH&T) asking for status on revised plans. Plumbing plans, sanitary calcs & .pdf files of revised pages were E-mailed to J. Kline on this date.
03-JUL-12	N	N	Details of Oil/Water separator for Elevator Pumps were E-mailed to J. Kline.
09-JUL-12	N	Y	Comments on latest revisions were E-mailed to Designer (Jason Petchal). Six hard copies of the final plans (approved by the City Engineer) were requested to be sent to our office. Plans shall include details of the Oil/Water separator for the elevator pumps. Revised storm calcs were requested as well.
10-JUL-12	N	N	Revised Storm Calcs & plans received by J. Kline (electronic copy).
19-JUL-12	N	N	THIS DATE SEVEN (7) SETS FULL SIZE PLANS RECEIVED - LOGGED IN AND TO J. KLINE
20-JUL-12	Y	N	THIS DATE PLANS APPROVED. SINCE THERE WERE SEVEN (7) SETS, THREE WERE SENT TO JASON PETCHAL AT EMH&T, 5500 NEW ALBANY ROAD, COLUMBUS, OHIO 43054. PER JEN KLINE, A COPY OF SEWER SPECS AND OIL INTERCEPTOR WERE ATTACHED TO INSPECTOR I AND II, AND CONTRACTOR.

Section A-4

Service Program*

* No service provided if section is blank

City of Middleburg Heights

<u>Type</u>	<u>Community Total</u>
Sanitary Sewers	343,102 Feet
Manholes	1,612 (Approximately)

2012 Service Program

<u>Program</u>	<u>2012 Activity</u>
1) High Pressure Cleaning*	116,347 Feet
2) House Service	523 Calls
3) Television Inspection*	125,746 Feet
4) Construction Activities	174 Job(s)
5) Smoke and Dye Testing	25 Test(s)
6) Construction Permits Issued (Commercial)	6
(Residential)	28
7) Plan Review	2 Plan(s)
8) Capital Projects	0 Feet (New Sewer Lines Inspected)

*Information includes footages for sanitary (collection system) and storm sewers.

Section A-5

Community Operating Expenses

City of Middleburg Heights

2012 Operating Expenses

<u>Activity</u>	<u>Cost</u>
1. Maintenance of Sanitary Sewerage Systems	\$560,911
2. Pump Station Operation and Maintenance	\$ 0
3. Waste Water Treatment Plant Maintenance	\$ 0
4. Engineering and/or Inspection	\$53,329
5. Capital Expenses (See Section A-6 if any)	\$142,333
6. Sanitary Overhead	\$23,971
Total Expenses:	\$780,544

Section A-6

Community Capital Expenses

* No service provided if section is blank

City of Middleburg Heights

2012 Capital Expenses

Klein Retention Basin	\$	34,300
Catch Basin Cleaning	\$	49,920
Bagley Road Storm Repair	\$	10,708
Shawnee/Old Pleasant Valley Storm Repair	\$	47,405

Total Capital Expenses: **\$ 142,333**

CONTACT INFORMATION

Address

Cuyahoga County Department of Public Works
 6100 West Canal Road
 Valley View, OH 44125
 Email: Publicworks@cuyahogacounty.us
 Website: Publicworks.cuyahogacounty.us

Bonita G. Teeuwen, P.E..... Director of Public Works
 Douglas L. Dillon, P.E., P.S. Design & Construction Administrator
 Michael W. Dever, MPA.....Maintenance Administrator
 Michael W. Chambers, CPAFiscal Officer
 Bryan J. Hitch..... Maintenance Superintendent

<i>Dispatch Office</i> (216) 443-8201	<i>Dispatch Email</i> PWDDispatch@cuyahogacounty.us
<i>Administration</i> (216) 443-8215	<i>Inspection & Permits</i> (216) 443-8211
<i>Engineering</i> Douglas L. Dillon, P.E., P.S., Design and Construction Administrator (216) 443-8614	<i>Sewer Maintenance</i> Gary Green, Senior Supervisor (216) 443-8225
<i>Lateral Services (House Crews)</i> John Gribble, Supervisor (216) 443-8227	<i>Inflow & Infiltration</i> Suzanne Britt, Supervisor (216) 443-3533
<i>Construction</i> Mitch Holt, Supervisor (216) 443-8229	<i>Televised Inspection</i> Todd Swindell, Supervisor (216) 443-8224
<i>Sewer Jetting</i> Guy Swindell, Supervisor (216) 443-8226	<i>Pump Station Operations</i> William Applegarth, Supervisor (216) 443-8295