



2014 ANNUAL REPORT

Prepared For The:

CITY OF BRECKSVILLE



CUYAHOGA COUNTY
DEPARTMENT OF PUBLIC WORKS

TABLE OF CONTENTS

Introduction.....I

Mission Statement & Overview.....2

Appendix Description.....II

Community Streets Cleaned.....A-1

Community Streets Inspected.....A-2

Project Status.....A-3

Service Program.....A-4

Community Operating Expenses.....A-5

Community Capital Expenses.....A-6

Contact Information.....Rear Folio



MISSION STATEMENT

“To provide and maintain a safe and efficient regional infrastructure system for residents, employees, businesses and visitors through innovative solutions, high-quality workmanship and superior customer service.”

OVERVIEW

Originally established in 1919, the Sanitary Engineering Division was created to administer authority in matters of wastewater, storm water, and water supply management. In 2012, the Sanitary Engineering Division (formerly CCSE) became a part of the Cuyahoga County Department of Public Works, and now operates under the County Executive Armond Budish.

Our focus on needs assessment, engineering feasibility studies, maintenance and repair of aging sewer lines, as well as other infrastructure-related issues, has a direct impact on commercial and residential development, job creation, and expanded tax base in the communities served by the Department of Public Works.

This Division is a major source of information and guidance that mayors, municipal engineers, and service directors rely on when making infrastructure decisions within their community. The Division has considerable experience in the maintenance of sanitary and storm sewer lines, many of which are old and have performed beyond their design life. Moreover, the Division has much expertise with respect to wastewater treatment plants and pump stations.

Public Works directs an operation which now encompasses more than 34 communities and maintains nearly 1,200 miles of sanitary sewers, treats millions of gallons of wastewater, operates 51 sewage-pumping stations, and maintains 2 wastewater treatment plants throughout Cuyahoga County. The Division also has agreements with municipal corporations for the establishment, operation, and maintenance of sanitary sewers.

Working in cooperation with the Ohio Environmental Protection Agency (Ohio EPA), the Northeast Ohio Regional Sewer District (NEORS), the City of Cleveland Division of Water, and the Cuyahoga County Board of Health; the Division manages a Capital Improvement Program (CIP) used for upgrading or replacing the existing infrastructure and for expanding sewers to non-sewered areas. The CIP includes information about project type, location, funding, preliminary engineering, and final plan development.

All operating funds for the Division are created through fees and assessments. The Division does not receive a subsidy through the County General Fund; however, it does use the General Fund's bonding capacity.

The Department of Public Works has been in the forefront of regionalism efforts, and with services provided to over half of the 59 communities within county lines, the office continues to maintain reasonable rates and improved infrastructure throughout the area.

- Reduce the number of flooded basements by decreasing mainline blockage, minimize the inflow/infiltration of storm water in the sanitary system, and evaluate the structural integrity of entire sewerage system;
- Increase efficiency to reduce operating cost and produce more available funding for capital improvement projects;
- Operate wastewater treatment plants in compliance of National Pollution Discharge Elimination System (NPDES) permit parameters;
- Provide guidelines for new construction through use of *Uniform Standards for Sewerage Improvements*;
- Review and approve new improvement plans; and
- Provide infrastructure needs assessment for communities.

- Capital improvement planning
- Plan review and approval of all new sewer improvements within the County sewer districts
- Construction management
- Geographic information systems (GIS)
- Project design
- Engineering analysis (required for operation of facilities and the collection system)
- Operational checks (EPA permit compliance)

- Operation and maintenance of wastewater treatment plants and pumping stations
- Inspection of new wastewater collection and transportation systems within County sewer districts
- Issuance of connection permits
- Issuance of sewer builders' licenses
- Development, implementation and monitoring of safety guidelines

GOALS OF THE PUBLIC WORKS DEPARTMENT

ENGINEERING SERVICES

FACILITIES OPERATION & MAINTENANCE



ADMINISTRATIVE SUPPORT SERVICES

In addition to the extensive maintenance services we offer, our administrative support includes the following:

- Capacity, Management, Operation, and Maintenance (CMOM) Program as regulated through the US EPA to help prevent Sanitary Sewer Overflows (SSO's)
- Maps and spatial analysis for design and service management
- Geographical information systems for development and implementation
- Record keeping, as-built plans and test tee location
- Fiscal oversight of annual operating budget and capital improvement budget
- Grant and loan administration
- Licensing and permitting of over 200 contractors
- Inspection of sewers and project oversight
- Design and review of construction projects and analysis of field testing

Maintenance Services

Mainline
Sewer
Cleaning

Lateral &
Mainline
Sewer
Repair

Lateral
Cleaning
(From
Test Tee
to
Mainline)

Smoke
& Dye
Testing

Digital
Video
Inspection

Treatment
Plant &
Pump
Station
Maintenance
&
Operation

24-Hour
Call
Out
Services

SUMMARY OF SERVICE DELIVERY

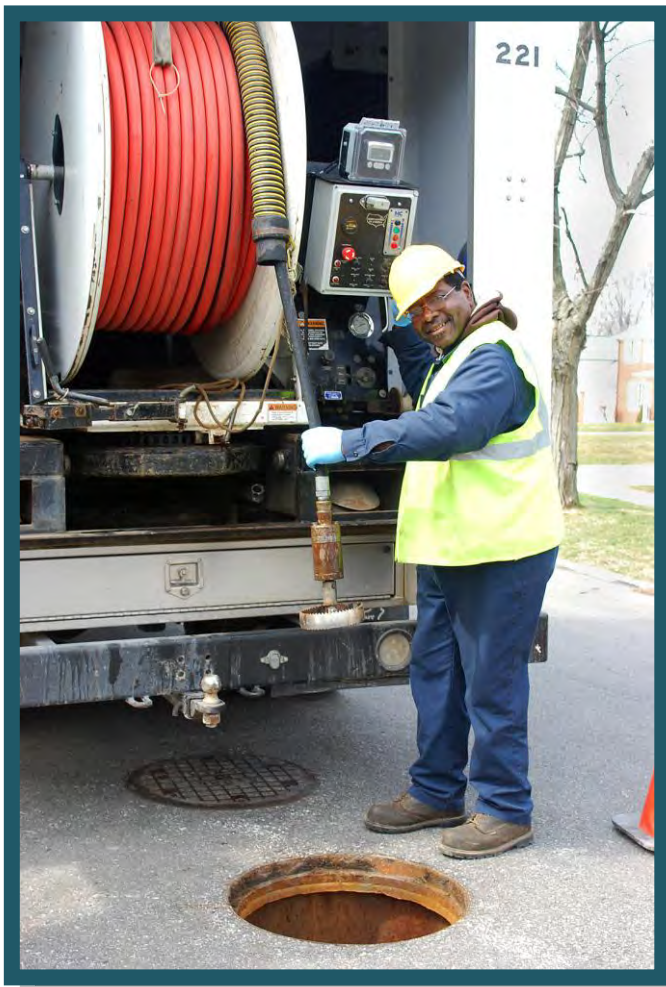
- High-pressure jetting of street sewer from the right-of-way, approximately 1,200 miles of sanitary sewers.
- Point repairs as well as capital improvement projects
- Cleaning of line from right-of-way to the house, approximately 7,500 houses annually
- Inflow and Infiltration testing and solutions
- Televising of lines for identifying possible failures or deficiencies
- Licensed wastewater operators to monitor the condition of the treatment plants and pumping stations, as well as implement upgrades and preventative maintenance.
- Emergency maintenance and 24- hour on-call team for resident issues

INTERNAL STRUCTURE OF THE DIVISION

SEWER MAINTENANCE

The Sewer Maintenance section provides a full-service program to clean, evaluate, maintain structural integrity, and perform construction on sanitary and storm sewers. The general program consists of cleaning all sanitary sewers every three years and televising all sanitary sewers every six years, which is well within the NEORS D’s

“Best Management Practices” guidelines.



The Division cleans approximately 7,500 house connections annually. The goal is to reduce basement flooding through inflow/infiltration reduction, reduce blocked mains, clean service connections and maximize sewer capacity.

The Department of Public Works has an Inflow and Infiltration section within the Lateral Service Department. This section uses various tools; flow meters to monitor sanitary mainlines during both dry and wet weather conditions as well as measuring wastewater flows coming into treatment plants and water flows in storm sewers. Smoke and dye testing can isolate areas affected by excessive volumes of clean runoff into the sanitary sewer system. When used

in unison, meters can detect extraneous water while smoke and dye testing can identify illegal downspout connections. Meters can also detect rainwater infiltrating through the ground and into sanitary sewers through bad pipe joints and cracked or broken pipe.

ENGINEERING

The Engineering Section provides technical services to its customers including capital project planning, grant and loan administration, design engineering, construction management, and inspection of sanitary and storm sewers, pump stations, and wastewater treatment facilities.

This section oversees capital construction projects that include financing in the forms of grants and loans obtained from the State of Ohio, as well as saving through maintenance efficiencies. These funds are utilized for lining, repairing, replacing, and rehabilitating existing sanitary and storm sewerage systems.

The Engineering Section reviews design plans for approximately eighty-five construction projects per year on behalf of thirty-four communities. It also coordinates and analyzes the results of field testing and flow monitoring in order to detect and eliminate storm water inflow/ infiltration from the sanitary sewer system. In addition, the Engineering Section maintains files and legal libraries of pertinent federal, state, and local regulations and renders technical assistance to other sections regarding these regulations.



INSPECTION/PERMITS

The Inspection and Permit section operates in 34 suburban communities. This section's major functions include: the licensing, bonding and permitting over 200 contractors, construction inspection of sanitary and storm sewers; which includes: residential, commercial, and industrial; along with the inspection of wastewater treatment plants and pumping stations. This section also maintains the permanent records for sewerage construction projects and provides information to all County departments, engineering consulting firms, contractors, and the public.

ENVIRONMENTAL SERVICES

■ Wastewater Treatment Plants

The County operated 2 wastewater treatment package plants. These facilities treated 147 million gallons of wastewater per year. The standards are set for each facility by the Ohio EPA through the National Pollution Discharge Elimination System (NPDES) permit. The support staff consists of wastewater operators licensed by the Ohio EPA who monitor the conditions of the plants and make necessary process adjustments to meet the NPDES permit.



■ Pumping Stations

The County operates 51 pumping stations throughout the 34 service communities. A Supervisory Control and Data Acquisition (SCADA) system monitors 41 of the stations. The system provides alarms and operational status through a central computer that is accessed from a remote computer providing 24 hour monitoring. It is our goal to upgrade all County operated pump stations and to expand the SCADA system to all new projects. Our maintenance staff consists of professional mechanics enabling us to repair most problems in-house, therefore keeping costs down. Their preventive maintenance program and dedication to the job has reduced emergency call-outs and overflows.

ENVIRONMENTAL SERVICES, continued

■ Capacity, Management, Operation, and Maintenance Program (CMOM)

The CMOM Program is a set of “best management practices” that have been developed by the industry and are applied over the life cycle of the collection system. It is these general practices that are taken into consideration when a system is being reviewed by a Federal or State agency. Improvement and recommendations are provided by such agencies based on deficiencies identified in the sanitary sewer system.

The United States EPA contacted our agency in July of 2009 in response to our CMOM's Report. In general, our Management, Maintenance and Operational processes meet the standard of the United States EPA. The main issue identified by them as a deficiency relate to any sanitary sewer overflows (SSO's). As we work with the communities to eliminate these overflows, the United States EPA has notified us that we have eliminated the noted deficiencies to our CMOM's Report and that we are in compliance with these "best management practices".



INFORMATION TECHNOLOGY

The Information Technology (IT) Section provides computer and analytical support to internal end users and communities within the Department. It is responsible for the design, implementation and maintenance of geographical map-based and other relational database systems, as well as guiding data acquisition tasks throughout the Division. In addition, the computerized mapping program catalogues the location of sewer systems and performs analysis on spatial data. This ability supports the planning, designing, and maintenance of sewer systems, as well as ensuring user fees are appropriately assessed and collected. Furthermore, the mapping program now features attached permits and engineering drawings.

In 2014 the IT Section completed their migration and upgrade of the GIS system to an ESRI-based enterprise environment. They also began the creation and testing of

Web-based GIS viewers as well as a Viewer to aid in the fee assessment process, all of which will be rolled out in 2015. They also implemented a new email system and upgraded cellular services.



FINANCE SECTION

The Finance Section provides support services to various units within the Public Works Department. Automated cost accounting programs and systems ensure accurate tracking and monitoring of expenditures, revenues, rate structures and other data that provide planning for capital projects and operational budgets. All systems and programs are operated under generally accepted accounting principles.

The Finance Section oversees an annual sanitary operating budget in excess of \$14 million and an annual capital improvement budget of \$5- \$10 million. The capital improvement plan is administered by this section and revenues, as well as expenditures, are approved and monitored for each individual improvement. Finance is responsible for accounts receivable, accounts payable, cost accounting, audit, inventory control, vehicle inventory management, capital project financing, purchasing, and the assessment of users fees.

APPENDIX DESCRIPTION*

The following appendices contain a variety of reports representing the services provided to communities in 2014. The Public Works Department follows a manhole-to-manhole, sewer segment-based accounting method for Jet Cleaning and TV Inspection maintenance services. The first two reports contain listings of the collection system cleaned and inspected for the year by street. The following report discloses the more significant projects submitted and reviewed by the Permit and Engineering sections during the year for your community. Smaller review services such as house connections or ongoing, intermittent review of large multi-phase projects spanning several years of development are not shown on this report. The final appendices are from the Finance and Billing section. These reports provide a breakdown of operating expenses, capital project costs contracted for the community, as well as additional services including house visits, inflow/infiltration studies, and construction activity. A map is enclosed showing areas where collection system mainlines were Jet cleaned and TV inspected, construction crew activity locations, house visits and if house lateral connections needed to be cleaned or inspected. The DVD provided contains a PDF file of the map, which can be copied for distribution. Adobe Corporation's free reader software is required and can be downloaded from www.adobe.com.

* Please note: These appendix reports are provided only to communities for which the specific service is provided by the Department of Public Works. For example, if regularly scheduled mainline cleaning service is not provided for your community, a map was not produced. Similarly, if project review or capital project management services are not provided to your community, then there is no corresponding report. Certain communities are provided limited maintenance on county improvement mainlines and/or facilities only.



6100 West Canal Road, Valley View, OH 44125 | **ph** 216.443.8201 | **fx** 216.443.8276

publicworks.cuyahogacounty.us | PublicWorks@cuyahogacounty.us

Section A-1

Community Streets Cleaned*

* No service provided if section is blank

Collection System Jet Cleaning - 2014

Brecksville

STREET	NUMBER OF SEGMENTS	JET FT
AMBER LANE	8	1,613
ASHLAWN DRIVE	11	2,528
ASHLAWN EASEMENT	3	685
BARR ROAD	2	309
BOULDER CREEK CIRCLE	1	195
BRADFORD LANE	5	800
BRECKSVILLE ROAD	5	1,447
BROOKVIEW DRIVE	7	1,295
CAMBRIDGE DRIVE	3	897
CANYON POINT	1	195
CARDINAL LANE	5	1,495
CARRIAGE HILL DRIVE	18	3,440
CHAUTAUQUA TRAIL	5	722
CHEROKEE LANE	6	1,419
COACHMAN COURT	2	506
COMPASS POINT SOUTH DRIVE	6	1,444
COVEWOOD COURT	1	255
CRABTREE EASEMENT	2	383
CRABTREE LANE	9	1,427
CRINKLEROOT CLEARING	2	493
CRYSTAL CREEK DRIVE	1	146
CRYSTAL CREEK EASEMENT	2	476
DAVENTREE	6	1,335
DEER RUN	13	2,849
DUNBAR EASEMENT	2	454
DUNBAR LANE	5	719
EAGLE RIDGE CIRCLE	1	279
ENGLISH DRIVE	7	1,264
FARVIEW OVAL	2	331
FARVIEW ROAD	8	2,374
FITZWATER	36	7,791
FITZWATER ROAD	2	322
FOREST LANE	1	279
FORESTDALE DRIVE	2	269
FORESTDALE EASEMENT	1	237
FROST LANE	4	831
GATEWOOD DRIVE	10	2,629
GLEN FOREST TRAIL	2	233

Collection System Jet Cleaning - 2014

Brecksville

STREET	NUMBER OF SEGMENTS	JET FT
GLENHOLLOW COURT	2	402
GREENHAVEN PARKWAY	10	2,327
GRENADIER DRIVE	2	501
HAROLD EASEMENT	1	126
HAWTHORNE DRIVE	5	1,433
HICKORY RIDGE	19	3,087
HIDDEN CANYON	10	2,100
HIGHLAND DRIVE	5	1,105
HIGHLAND ROAD	1	20
HILTON ROAD	5	1,506
HINCKLEY CIRCLE	2	458
HOLLIS COURT	2	416
HOLLIS LANE	9	1,886
HOLLYTHORN DRIVE	6	1,399
HUNTING DRIVE	7	1,667
HUNTING VALLEY LANE	7	1,317
IROQUOIS TRAIL	4	1,079
LAKE FOREST DRIVE	7	1,219
LAUREL LANE	6	1,410
LLOYD DRIVE	2	443
MAIDSTONE DRIVE	2	350
MEADOW LANE	9	1,352
MERCER LANE	4	869
MONTICELLO DRIVE	2	505
NOBLE PARK	5	1,267
NOBLE PARK DRIVE	2	500
OAK PARK	1	390
OAKES EASEMENT	3	646
OAKES ROAD	52	13,273
OAKHURST CIRCLE	4	929
OAKHURST DRIVE	11	2,284
OLD ORCHARD DRIVE	15	2,369
OLD QUARRY LANE	11	2,374
ORIANNA STREET	2	415
OTTAWA DRIVE	2	607
PARK PLACE	5	886
PARTRIDGE TRAIL	5	1,445
PERSHING DRIVE	4	1,147

Collection System Jet Cleaning - 2014

Brecksville

STREET	NUMBER OF SEGMENTS	JET FT
PIONEER'S POINT	1	244
PLANTATION DRIVE	6	1,114
PROVINCE LANE	3	580
QUAIL DRIVE	3	449
RED OAKS DRIVE	1	202
RIDGEWOOD LANE	3	576
RIVERCREST DRIVE	9	1,295
RIVERVIEW	1	155
RIVERVIEW ROAD	11	3,038
ROBIN LANE	6	1,122
ROCKLEDGE DRIVE	9	1,756
SETH PAYNE STREET	2	559
SETTLERS PASSAGE	18	3,863
SNOW BLOSSOM	3	868
SNOW BLOSSOM LANE	4	1,099
SNOWBLOSSOM LANE	4	876
SNOWVILLE	20	4,626
SNOWVILLE EASEMENT	2	481
SNOWVILLE ROAD	1	400
SOMERSET DRIVE	6	1,400
SOUTH COURT	1	369
SOUTHPOINTE PARKWAY	8	2,278
SPRINGSIDE OVAL	3	460
STOVER LANE	3	717
SUMMER WIND DRIVE	7	1,501
SUMMERWIND DRIVE	2	567
SUNNYDALE DRIVE	9	2,388
SUNRISE TRAIL	3	411
TANAGER OVAL	2	380
TANAGER TRAIL	24	4,609
THORNTREE DRIVE	6	991
THORNTREE EASEMENT	1	165
TIMBER TRAIL	2	328
TIMBER TRAIL EASEMENT	1	206
TURNING LEAF	2	738
TURNING LEAF TRAIL	1	349
VALLEYBROOK DRIVE	10	2,275
VERA DRIVE	7	1,781

Collection System Jet Cleaning - 2014

Brecksville

STREET	NUMBER OF SEGMENTS	JET FT
WALLINGS	1	350
WARBLERS ROOST	5	731
WHITE OAKS CIRCLE	1	283
WHITEWOOD EASEMENT	2	387
WHITEWOOD ROAD	31	6,890
WIESE ROAD	1	156
WILLOW COURT	1	329
WINDING WAY	13	2,712
WOODSTONE EASEMENT	1	250
Grand Total:	719	157,179

Section A-2

Community Streets Inspected*

* No service provided if section is blank

Collection System TV Inspection - 2014

Brecksville

STREET	NUMBER OF SEGMENTS	TV FT
AMBER LANE	16	3,507
ASHLAWN DRIVE	9	2,105
ASHLAWN EASEMENT	1	250
BRADFORD LANE	3	655
BRECKSVILLE ROAD	19	3,807
BROOKVIEW DRIVE	7	1,316
CALVIN ROAD	1	3
CAMBRIDGE DRIVE	7	1,568
CANYON POINT CIRCLE	1	110
CARDINAL LANE	4	1,234
CARRIAGE HILL DRIVE	13	2,574
CHAUTAUQUA TRAIL	3	541
CHEROKEE LANE	6	1,189
CHIPPAWA ROAD	1	86
CHIPPEWA ROAD	4	434
CINNABAR DRIVE	7	1,433
COACHMAN COURT	2	507
CRABTREE EASEMENT	2	385
CRABTREE LANE	8	1,241
CRYSTAL CREEK DRIVE	5	1,291
CRYSTAL CREEK EASEMENT	3	818
DAVENTREE	6	1,336
DEER RUN	1	126
DUNBAR LANE	9	1,490
ENGLISH DRIVE	6	1,034
FARVIEW OVAL	4	652
FARVIEW ROAD	11	2,820
FITZWATER	41	8,946
FORESTDALE DRIVE	2	388
FORESTDALE EASEMENT	1	237
FORGE DRIVE	1	207
FORGE ROAD	1	72
FROST LANE	4	828
GLEN COE DRIVE	4	476
GLEN VALLEY DRIVE	1	321
GREENBRAIR ROAD	1	202
GREENBRIAR ROAD	2	132
GREENBRIER DRIVE	6	1,254

Collection System TV Inspection - 2014

Brecksville

STREET	NUMBER OF SEGMENTS	TV FT
GREENHAVEN PARKWAY	14	2,729
GRENADIER DRIVE	2	500
HAWTHORNE DRIVE	5	1,117
HIGHLAND DRIVE	1	278
HIGHLAND ROAD	5	630
HILTON ROAD	8	1,983
HINCKLEY CIRCLE	2	457
HOLLIS COURT	2	415
HOLLIS LANE	13	2,309
HUNTING DRIVE	1	286
IROQUOIS TRAIL	3	857
LAUREL LANE	3	393
LOOKOUT DRIVE	1	188
MAIDSTONE DRIVE	1	89
MEADOW LANE	10	1,503
MERCER LANE	7	1,359
MILL ROAD	1	77
MONTICELLO DRIVE	4	756
OAK PARK	1	390
OAKES EASEMENT	1	150
OAKES ROAD	3	299
OAKHURST CIRCLE	5	948
OAKHURST DRIVE	11	2,251
OLD ORCHARD DRIVE	2	499
OLD QUARRY LANE	12	2,557
OTTAWA DRIVE	2	615
PARK PLACE	5	890
PARTRIDGE TRAIL	4	1,208
PERSHING DRIVE	4	1,150
PIONEER'S POINT	1	246
PLANTATION DRIVE	5	974
PRINCESS COURT	1	390
PROVINCE LANE	11	2,245
RED OAKS DRIVE	1	200
RIVERCREST DRIVE	17	2,295
RIVERVIEW ROAD	12	3,379
ROBIN LANE	8	1,188
ROCKLEDGE DRIVE	4	873

Collection System TV Inspection - 2014

Brecksville

STREET	NUMBER OF SEGMENTS	TV FT
SHENANDOAH DRIVE	2	378
SNOWVILLE ROAD	1	394
SOMERSET DRIVE	6	1,408
SOMERSET OVAL	3	57
SOUTHERN ESTATES	2	231
STOVER LANE	4	934
SUMMER WIND DRIVE	7	1,476
SUMMERWIND DRIVE	1	187
SUNRISE TRAIL	3	446
SUNSTONE DRIVE	4	1,036
SUNSTONE EASEMENT	2	474
TANAGER OVAL	2	386
TANAGER TRAIL	18	3,244
THORNTREE DRIVE	8	1,053
TIMBER TRAIL EASEMENT	1	205
VERA DRIVE	3	567
WALLINGS	1	332
WALLINGS ROAD	3	777
WHITE OAKS CIRCLE	1	285
WHITWOOD ROAD	34	7,651
WIESE ROAD	1	309
WINDING WAY	51	10,685
WOODSTONE DRIVE	4	672
WOODSTONE EASEMENT	2	321
Grand Total:	580	117,756

Section A-3

Projects Status*

* No service provided if section is blank

CCSE Project Reviews

<i>Project ID</i>	<i>Project Name</i>	<i>Municipality</i>	<i>Review Date</i>	<i>Approved</i>
14-005	CARRIAGE HILL DR. PUMP STATION	BRECKSVILLE	25-Apr-14	Y
14-007	FARVIEW RD STM SWR IMPROV PLANS	BRECKSVILLE	26-Mar-14	Y
14-008	SOUTHERN ESTATES WWTP	BRECKSVILLE	21-Mar-14	N
14-017	LUBRIZOL-PM/BUILDINGS-CONNECTOR ADDITION	BRECKSVILLE	2-Jul-14	Y
14-020	TREELINE INC. PARKING LOT EXTENSION	BRECKSVILLE	11-Jul-14	Y
14-021	STADIUM DRIVE SERVICE & HORTICULTURE BLDG	BRECKSVILLE	15-Jul-14	Y
14-022	DOMINION PIR-162	BRECKSVILLE	1-Jul-14	Y
14-050	STADIUM DRIVE PUMP STATION IMPROV PLANS	BRECKSVILLE	9-Dec-14	Y

Section A-4

Service Program*

* No service provided if section is blank

City of Brecksville

<u>Type</u>	<u>Community Total</u>
Sanitary Sewers	414,777 Feet
Manholes	1,916 (Approximately)

2014 Service Program

<u>Program</u>	<u>2014 Activity</u>
1) High Pressure Cleaning*	157,179 Feet
2) House Service	341 Calls
3) Television Inspection*	117,756 Feet
4) Construction Activities	79 Job(s)
5) Smoke and Dye Testing	0 Test(s)
6) Construction Permits Issued (Commercial)	4
(Residential)	28
7) Plan Review	8 Plan(s)
8) Capital Projects	7,554 Feet (Sewer Lines Inspected)

*Information includes footages for sanitary (collection system) and storm sewers.

Section A-5

Community Operating Expenses

City of Brecksville
2014 Operating Expenses

<u>Activity</u>	<u>Cost</u>
1. Maintenance of Sanitary Sewerage Systems	\$724,727
2. Pump Station Operation and Maintenance	\$211,344
3. Waste Water Treatment Plant Maintenance	\$ 0
4. Engineering and/or Inspection	\$204,310
5. Capital Expenses (See Section A-6 if any)	\$837,148
 Total Expenses:	 \$1,977,529

Section A-6

Community Capital Expenses

* No service provided if section is blank

City of Brecksville

2014 Capital Expenses

Snowville Lateral Repair	\$ 9,078
North Court Storm Repair	\$ 14,328
Meadow Lane Storm Repair	\$ 9,673
Snowville Road Culvert Repair	\$ 34,529
Echo Hills Loan Repayment	\$ 133,992
Dewey Road Loan Repayment	\$ 183,412
Chippewa Storm Repair	\$ 6,139
Bradford Pump Station PTI	\$ 3,229
Bowers Snowville Reimbursement	\$ 6,000
Whitewood Storm Repair	\$ 55,796
Mercer Lane San. & Storm Repair	\$ 150,533
Rivercrest Storm Repair	\$ 87,153
Amber Lane Culvert Repair	\$ 104,818
Echo Hills Lateral Repair	\$ 4,975
Oakes Road Lateral Repair	\$ 6,379
Wiese Road Lateral Repair	\$ 10,519
Summer Wind Lateral Repair	\$ 16,595

Total Capital Expenses: \$ 837,148

CONTACT INFORMATION

Address

Cuyahoga County Department of Public Works
 6100 West Canal Road
 Valley View, OH 44125
 Email: Publicworks@cuyahogacounty.us
 Website: Publicworks.cuyahogacounty.us

Michael W. Dever, MPA..... Director of Public Works
 David E. Marquard, P.E.,P.S. Design & Construction Administrator
 Michael W. Chambers, CPAFiscal Officer
 Bryan J. Hitch..... Maintenance Superintendent

<i>Dispatch Office</i> (216) 443-8201	<i>Dispatch Email</i> PWDDispatch@cuyahogacounty.us
<i>Administration</i> (216) 443-8215	<i>Inspection & Permits</i> (216) 443-8211
<i>Engineering</i> Hugh Blocksidge, P.E., Chief Engineer (216) 443-8205	<i>Sewer Maintenance</i> Gary Green, Senior Supervisor (216) 443-8225
<i>Lateral Services (House Crews)</i> John Gribble, Supervisor (216) 443-8227	<i>Inflow & Infiltration</i> Suzanne Britt, Supervisor (216) 443-3533
<i>Construction</i> Mitch Holt, Supervisor (216) 443-8229	<i>Televised Inspection</i> Todd Swindell, Supervisor (216) 443-8224
<i>Sewer Jetting</i> Guy Swindell, Supervisor (216) 443-8226	<i>Pump Station Operations</i> William Applegarth, Supervisor (216) 443-8295