



2014 ANNUAL REPORT

Prepared For The:

CITY OF PARMA



CUYAHOGA COUNTY
DEPARTMENT OF PUBLIC WORKS

TABLE OF CONTENTS

Introduction.....I

Mission Statement & Overview.....2

Appendix Description.....II

Community Streets Cleaned.....A-1

Community Streets Inspected.....A-2

Project Status.....A-3

Service Program.....A-4

Community Operating Expenses.....A-5

Community Capital Expenses.....A-6

Contact Information.....Rear Folio



MISSION STATEMENT

“To provide and maintain a safe and efficient regional infrastructure system for residents, employees, businesses and visitors through innovative solutions, high-quality workmanship and superior customer service.”

OVERVIEW

Originally established in 1919, the Sanitary Engineering Division was created to administer authority in matters of wastewater, storm water, and water supply management. In 2012, the Sanitary Engineering Division (formerly CCSE) became a part of the Cuyahoga County Department of Public Works, and now operates under the County Executive Armond Budish.

Our focus on needs assessment, engineering feasibility studies, maintenance and repair of aging sewer lines, as well as other infrastructure-related issues, has a direct impact on commercial and residential development, job creation, and expanded tax base in the communities served by the Department of Public Works.

This Division is a major source of information and guidance that mayors, municipal engineers, and service directors rely on when making infrastructure decisions within their community. The Division has considerable experience in the maintenance of sanitary and storm sewer lines, many of which are old and have performed beyond their design life. Moreover, the Division has much expertise with respect to wastewater treatment plants and pump stations.

Public Works directs an operation which now encompasses more than 34 communities and maintains nearly 1,200 miles of sanitary sewers, treats millions of gallons of wastewater, operates 51 sewage-pumping stations, and maintains 2 wastewater treatment plants throughout Cuyahoga County. The Division also has agreements with municipal corporations for the establishment, operation, and maintenance of sanitary sewers.

Working in cooperation with the Ohio Environmental Protection Agency (Ohio EPA), the Northeast Ohio Regional Sewer District (NEORS), the City of Cleveland Division of Water, and the Cuyahoga County Board of Health; the Division manages a Capital Improvement Program (CIP) used for upgrading or replacing the existing infrastructure and for expanding sewers to non-sewered areas. The CIP includes information about project type, location, funding, preliminary engineering, and final plan development.

All operating funds for the Division are created through fees and assessments. The Division does not receive a subsidy through the County General Fund; however, it does use the General Fund's bonding capacity.

The Department of Public Works has been in the forefront of regionalism efforts, and with services provided to over half of the 59 communities within county lines, the office continues to maintain reasonable rates and improved infrastructure throughout the area.

- Reduce the number of flooded basements by decreasing mainline blockage, minimize the inflow/infiltration of storm water in the sanitary system, and evaluate the structural integrity of entire sewerage system;
- Increase efficiency to reduce operating cost and produce more available funding for capital improvement projects;
- Operate wastewater treatment plants in compliance of National Pollution Discharge Elimination System (NPDES) permit parameters;
- Provide guidelines for new construction through use of *Uniform Standards for Sewerage Improvements*;
- Review and approve new improvement plans; and
- Provide infrastructure needs assessment for communities.

- Capital improvement planning
- Plan review and approval of all new sewer improvements within the County sewer districts
- Construction management
- Geographic information systems (GIS)
- Project design
- Engineering analysis (required for operation of facilities and the collection system)
- Operational checks (EPA permit compliance)

- Operation and maintenance of wastewater treatment plants and pumping stations
- Inspection of new wastewater collection and transportation systems within County sewer districts
- Issuance of connection permits
- Issuance of sewer builders' licenses
- Development, implementation and monitoring of safety guidelines

GOALS OF THE PUBLIC WORKS DEPARTMENT

ENGINEERING SERVICES

FACILITIES OPERATION & MAINTENANCE



ADMINISTRATIVE SUPPORT SERVICES

In addition to the extensive maintenance services we offer, our administrative support includes the following:

- Capacity, Management, Operation, and Maintenance (CMOM) Program as regulated through the US EPA to help prevent Sanitary Sewer Overflows (SSO's)
- Maps and spatial analysis for design and service management
- Geographical information systems for development and implementation
- Record keeping, as-built plans and test tee location
- Fiscal oversight of annual operating budget and capital improvement budget
- Grant and loan administration
- Licensing and permitting of over 200 contractors
- Inspection of sewers and project oversight
- Design and review of construction projects and analysis of field testing

Maintenance Services

Mainline
Sewer
Cleaning

Lateral &
Mainline
Sewer
Repair

Lateral
Cleaning
(From
Test Tee
to
Mainline)

Smoke
& Dye
Testing

Digital
Video
Inspection

Treatment
Plant &
Pump
Station
Maintenance
&
Operation

24-Hour
Call
Out
Services

SUMMARY OF SERVICE DELIVERY

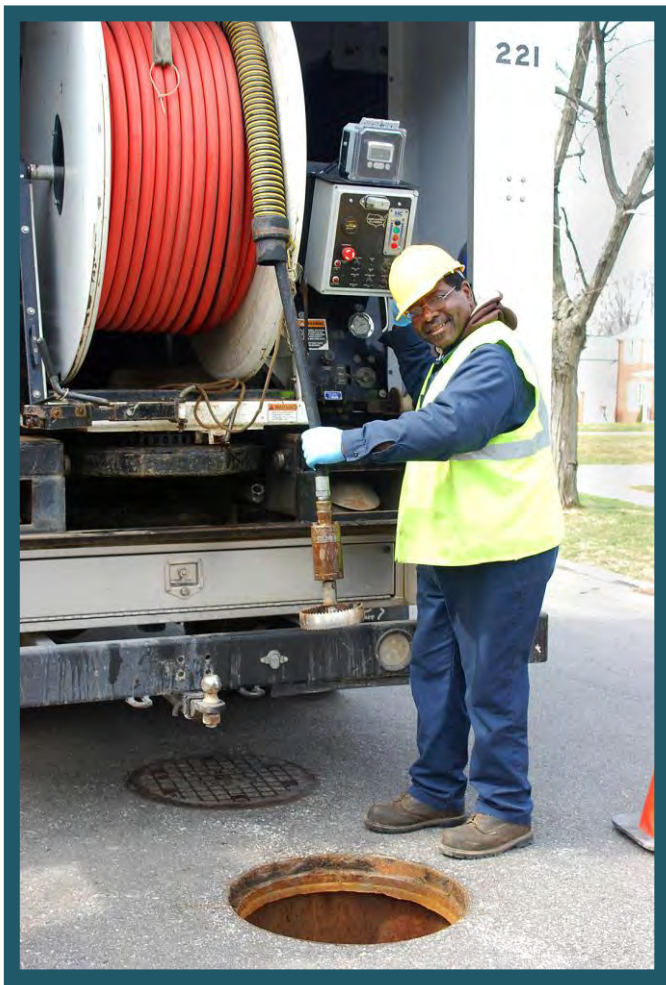
- High-pressure jetting of street sewer from the right-of-way, approximately 1,200 miles of sanitary sewers.
- Point repairs as well as capital improvement projects
- Cleaning of line from right-of-way to the house, approximately 7,500 houses annually
- Inflow and Infiltration testing and solutions
- Televising of lines for identifying possible failures or deficiencies
- Licensed wastewater operators to monitor the condition of the treatment plants and pumping stations, as well as implement upgrades and preventative maintenance.
- Emergency maintenance and 24- hour on-call team for resident issues

INTERNAL STRUCTURE OF THE DIVISION

SEWER MAINTENANCE

The Sewer Maintenance section provides a full-service program to clean, evaluate, maintain structural integrity, and perform construction on sanitary and storm sewers. The general program consists of cleaning all sanitary sewers every three years and televising all sanitary sewers every six years, which is well within the NEORSD's

"Best Management Practices" guidelines.



The Division cleans approximately 7,500 house connections annually. The goal is to reduce basement flooding through inflow/infiltration reduction, reduce blocked mains, clean service connections and maximize sewer capacity.

The Department of Public Works has an Inflow and Infiltration section within the Lateral Service Department. This section uses various tools; flow meters to monitor sanitary mainlines during both dry and wet weather conditions as well as measuring wastewater flows coming into treatment plants and water flows in storm sewers. Smoke and dye testing can isolate areas affected by excessive volumes of clean runoff into the sanitary sewer system. When used

in unison, meters can detect extraneous water while smoke and dye testing can identify illegal downspout connections. Meters can also detect rainwater infiltrating through the ground and into sanitary sewers through bad pipe joints and cracked or broken pipe.

ENGINEERING

The Engineering Section provides technical services to its customers including capital project planning, grant and loan administration, design engineering, construction management, and inspection of sanitary and storm sewers, pump stations, and wastewater treatment facilities.

This section oversees capital construction projects that include financing in the forms of grants and loans obtained from the State of Ohio, as well as saving through maintenance efficiencies. These funds are utilized for lining, repairing, replacing, and rehabilitating existing sanitary and storm sewerage systems.

The Engineering Section reviews design plans for approximately eighty-five construction projects per year on behalf of thirty-four communities. It also coordinates and analyzes the results of field testing and flow monitoring in order to detect and eliminate storm water inflow/ infiltration from the sanitary sewer system. In addition, the Engineering Section maintains files and legal libraries of pertinent federal, state, and local regulations and renders technical assistance to other sections regarding these regulations.



INSPECTION/PERMITS

The Inspection and Permit section operates in 34 suburban communities. This section's major functions include: the licensing, bonding and permitting over 200 contractors, construction inspection of sanitary and storm sewers; which includes: residential, commercial, and industrial; along with the inspection of wastewater treatment plants and pumping stations. This section also maintains the permanent records for sewerage construction projects and provides information to all County departments, engineering consulting firms, contractors, and the public.

ENVIRONMENTAL SERVICES

■ Wastewater Treatment Plants

The County operated 2 wastewater treatment package plants. These facilities treated 147 million gallons of wastewater per year. The standards are set for each facility by the Ohio EPA through the National Pollution Discharge Elimination System (NPDES) permit. The support staff consists of wastewater operators licensed by the Ohio EPA who monitor the conditions of the plants and make necessary process adjustments to meet the NPDES permit.



■ Pumping Stations

The County operates 51 pumping stations throughout the 34 service communities. A Supervisory Control and Data Acquisition (SCADA) system monitors 41 of the stations. The system provides alarms and operational status through a central computer that is accessed from a remote computer providing 24 hour monitoring. It is our goal to upgrade all County operated pump stations and to expand the SCADA system to all new projects. Our maintenance staff consists of professional mechanics enabling us to repair most problems in-house, therefore keeping costs down. Their preventive maintenance program and dedication to the job has reduced emergency call-outs and overflows.

ENVIRONMENTAL SERVICES, continued

■ Capacity, Management, Operation, and Maintenance Program (CMOM)

The CMOM Program is a set of “best management practices” that have been developed by the industry and are applied over the life cycle of the collection system. It is these general practices that are taken into consideration when a system is being reviewed by a Federal or State agency. Improvement and recommendations are provided by such agencies based on deficiencies identified in the sanitary sewer system.

The United States EPA contacted our agency in July of 2009 in response to our CMOM's Report. In general, our Management, Maintenance and Operational processes meet the standard of the United States EPA. The main issue identified by them as a deficiency relate to any sanitary sewer overflows (SSO's). As we work with the communities to eliminate these overflows, the United States EPA has notified us that we have eliminated the noted deficiencies to our CMOM's Report and that we are in compliance with these "best management practices".



INFORMATION TECHNOLOGY

The Information Technology (IT) Section provides computer and analytical support to internal end users and communities within the Department. It is responsible for the design, implementation and maintenance of geographical map-based and other relational database systems, as well as guiding data acquisition tasks throughout the Division. In addition, the computerized mapping program catalogues the location of sewer systems and performs analysis on spatial data. This ability supports the planning, designing, and maintenance of sewer systems, as well as ensuring user fees are appropriately assessed and collected. Furthermore, the mapping program now features attached permits and engineering drawings.

In 2014 the IT Section completed their migration and upgrade of the GIS system to an ESRI-based enterprise environment. They also began the creation and testing of

Web-based GIS viewers as well as a Viewer to aid in the fee assessment process, all of which will be rolled out in 2015. They also implemented a new email system and upgraded cellular services.



FINANCE SECTION

The Finance Section provides support services to various units within the Public Works Department. Automated cost accounting programs and systems ensure accurate tracking and monitoring of expenditures, revenues, rate structures and other data that provide planning for capital projects and operational budgets. All systems and programs are operated under generally accepted accounting principles.

The Finance Section oversees an annual sanitary operating budget in excess of \$14 million and an annual capital improvement budget of \$5- \$10 million. The capital improvement plan is administered by this section and revenues, as well as expenditures, are approved and monitored for each individual improvement. Finance is responsible for accounts receivable, accounts payable, cost accounting, audit, inventory control, vehicle inventory management, capital project financing, purchasing, and the assessment of users fees.

APPENDIX DESCRIPTION*

The following appendices contain a variety of reports representing the services provided to communities in 2014. The Public Works Department follows a manhole-to-manhole, sewer segment-based accounting method for Jet Cleaning and TV Inspection maintenance services. The first two reports contain listings of the collection system cleaned and inspected for the year by street. The following report discloses the more significant projects submitted and reviewed by the Permit and Engineering sections during the year for your community. Smaller review services such as house connections or ongoing, intermittent review of large multi-phase projects spanning several years of development are not shown on this report. The final appendices are from the Finance and Billing section. These reports provide a breakdown of operating expenses, capital project costs contracted for the community, as well as additional services including house visits, inflow/infiltration studies, and construction activity. A map is enclosed showing areas where collection system mainlines were Jet cleaned and TV inspected, construction crew activity locations, house visits and if house lateral connections needed to be cleaned or inspected. The DVD provided contains a PDF file of the map, which can be copied for distribution. Adobe Corporation's free reader software is required and can be downloaded from www.adobe.com.

* Please note: These appendix reports are provided only to communities for which the specific service is provided by the Department of Public Works. For example, if regularly scheduled mainline cleaning service is not provided for your community, a map was not produced. Similarly, if project review or capital project management services are not provided to your community, then there is no corresponding report. Certain communities are provided limited maintenance on county improvement mainlines and/or facilities only.



6100 West Canal Road, Valley View, OH 44125 | **ph** 216.443.8201 | **fx** 216.443.8276

publicworks.cuyahogacounty.us | PublicWorks@cuyahogacounty.us

Section A-1

Community Streets Cleaned*

* No service provided if section is blank

Collection System Jet Cleaning - 2014

Parma

STREET	NUMBER OF SEGMENTS	JET FT
WEST RIDGEWOOD DRIVE	1	332
AMES ROAD	7	1,608
ANN ARBOR DRIVE	20	4,177
ANTOINETTE DRIVE	8	1,582
APOLLO DRIVE	1	187
ARCADIA DRIVE	10	1,336
ARDEN AVENUE	3	904
ARROWWOOD OVAL	2	127
BANNER LANE	18	2,614
BARON DRIVE	7	1,387
BARTON CIRCLE	3	574
BARTON HILL DRIVE	9	1,865
BEAU COURT	1	162
BERESFORD AVENUE	1	262
BIG CREEK PARKWAY	1	
BOBKO BOULEVARD	8	2,347
BROADVIEW ROAD	4	552
BROOKPARK ROAD	6	1,487
BRUENING DRIVE	5	1,318
BURDEN DRIVE	2	397
CECELIA DRIVE	1	301
CHEVROLET BOULEVARD	2	422
COTTONWOOD LANE	1	305
COVENTRY DRIVE	10	2,101
DALESIDE AVENUE	3	483
DARTMOOR AVENUE	2	610
DAWN HAVEN DRIVE	9	1,887
DAWN VISTA OVAL	3	647
DAWNWOOD DRIVE	2	600
DAY DRIVE	37	8,032
DEBBY DRIVE	2	460
DELL HAVEN DRIVE	2	400
DENTZLER ROAD	1	293
DENVER	4	978
EDGEHILL DRIVE	3	939
ELIZABETH AVENUE	1	146
ELSMERE	1	375
ELY VISTA DRIVE	10	2,389

Collection System Jet Cleaning - 2014

Parma

STREET	NUMBER OF SEGMENTS	JET FT
EVANS DRIVE	1	121
EVENTIDE DRIVE	1	424
FAY DRIVE	2	552
FENWAY DRIVE	13	2,321
FERNHILL AVENUE	1	325
FOREST AVENUE	2	
FRIAR DRIVE	14	3,610
GLAMER DRIVE	5	1,099
GORDON DRIVE	3	378
GREEN ACRES DRIVE	13	2,592
GREENLEAF AVENUE	3	1,011
GROSS DRIVE	11	2,689
HACIENDA DRIVE	2	506
HAROLD DRIVE	2	240
HEARTHSTONE ROAD	2	186
HIGHVIEW DRIVE	3	757
HILLSDALE ROAD	1	250
HOERTZ ROAD	4	1,440
HOLBURN ROAD	2	302
HOLLENBECK EASEMENT	1	199
HOUSTON DRIVE	5	896
JACQUELINE DRIVE	10	2,326
JAMESON ROAD	6	1,458
JANICE DRIVE	1	89
JEANNE DRIVE	24	6,433
JENNIFER DRIVE	6	755
JILL DRIVE	2	405
JO ANN DRIVE	7	1,061
JOHNSON DRIVE	12	2,869
JUDY DRIVE	4	955
KADER DRIVE	12	3,078
KENILWORTH AVENUE	1	71
KENNETH AVENUE	2	479
KENNETH DRIVE	3	904
KOCH DRIVE	7	1,266
KRUEGER AVENUE	9	2,331
KRUEGER AVEUE	1	233
LAKEVIEW DRIVE	11	1,702

Collection System Jet Cleaning - 2014

Parma

STREET	NUMBER OF SEGMENTS	JET FT
LALEMANT DRIVE	12	2,660
LANGERFORD DRIVE	11	1,566
LASSITER DRIVE	9	1,948
LASSITER OVAL	1	265
LAURENT BUILDING	2	166
LAURENT DRIVE	7	1,377
LIME LANE	7	914
LINCOLNSHIRE LANE	2	190
LONGWOOD AVENUE	1	50
LYNETT DRIVE	12	2,958
MALIBU DRIVE	2	416
MARKO LANE	17	2,146
MARLBOROUGH AVENUE	1	474
MARMORE AVENUE	8	2,474
MEADOW LANE	18	3,603
MELODY LANE	3	720
MIRABEAU DRIVE	6	1,012
MOONCREST DRIVE	3	864
NASSAU DRIVE	7	1,025
NELSON EASEMENT	1	365
NEWCOMB DRIVE	1	355
NIGHT VISTA DRIVE	7	2,121
NORMANDY DRIVE	8	1,299
NOTTINGHAM DRIVE	11	2,890
PARKVIEW EASEMENT	6	1,366
PEARL ROAD	2	802
PECAN DRIVE	3	298
PELHAM DRIVE	2	768
PIN OAK DRIVE	1	240
PINEGROVE AVENUE	5	1,278
PINEHURST DRIVE	10	2,005
PLAZA DRIVE	13	3,144
PLEASANT VIEW DRIVE	4	524
PLEASANTVIEW DRIVE	4	532
POMONA DRIVE	2	457
POWERS BOULEVARD	13	2,207
RALSTON DRIVE	9	1,566
RALSTON EASEMENT	5	567

Collection System Jet Cleaning - 2014

Parma

STREET	NUMBER OF SEGMENTS	JET FT
REGENCY DRIVE	5	902
RENO DRIVE	6	1,254
RENWOOD DRIVE	20	4,646
RIDGE EASEMENT	3	561
RIDGE ROAD	19	3,285
RIDGEFIELD AVENUE	2	577
ROANOKE CIRCLE	2	448
ROBINHOOD DRIVE	12	2,601
ROMILLY OVAL	2	335
RONALD DRIVE	45	11,828
ROUSSEAU DRIVE	11	1,546
ROYALVIEW DRIVE	13	3,003
SANDYHOOK DRIVE	3	583
SASSAFRAS DRIVE	12	1,912
SELWICK DRIVE	21	4,653
SEQUOIA DRIVE	9	2,397
SHERWOOD DRIVE	8	2,186
SKYLARK DRIVE	8	1,476
SLEEPY HOLLOW DRIVE	6	1,293
SNOW ROAD	21	4,537
SPRINGDALE AVENUE	3	664
ST PETERSBURG DRIVE	3	384
STANFIELD DRIVE	1	
STORMES DRIVE	8	1,564
STUMPH ROAD	2	344
SUN VISTA DRIVE	3	843
TALBOT DRIVE	4	991
THOREAU DRIVE	16	2,927
THORNTON DRIVE	1	22
TORRINGTON AVENUE	16	5,045
TRACY TRAIL	2	351
TREVOR LANE	7	1,294
TUCSON DRIVE	8	1,723
VILLE COURT	1	139
WAKE ROBIN DRIVE	2	590
WARD ROAD	1	250
WENDY DRIVE	6	1,232
WEST 10 STREET	5	1,803

Collection System Jet Cleaning - 2014

Parma

STREET	NUMBER OF SEGMENTS	JET FT
WEST 130 STREET	13	3,187
WEST 130TH STREET	20	4,893
WEST 33 STREET	1	95
WEST 48 STREET	10	2,569
WEST 49 STREET	3	738
WEST 52 STREET	2	530
WEST PARKVIEW DRIVE	5	1,048
WEST PLEASANT VALLEY ROAD	1	214
WEST RIDGEWOOD DRIVE	6	1,276
WEXFORD AVENUE	12	3,441
WEXFORD ROAD	1	350
WILLISTON DRIVE	7	1,675
WINTERPARK DRIVE	2	508
WOOD AVENUE	6	2,000
WOOD THRUSH DRIVE	6	993
WOODBURY HILLS DRIVE	9	2,055
WOOLMAN COURT	4	825
WOOSTER PARKWAY	4	1,124
YORK ROAD	1	231
ZONA LANE	5	1,134
Grand Total:	1091	237,586

Section A-2

Community Streets Inspected*

* No service provided if section is blank

Collection System TV Inspection - 2014

Parma

STREET	NUMBER OF SEGMENTS	TV FT
ABBOT DRIVE	2	326
AMBER LANE	2	445
AMES ROAD	13	2,821
ANDOVER DRIVE	6	868
ANN ARBOR DRIVE	1	4
ANTOINETTE DRIVE	7	1,042
ANTONETTE DRIVE	1	25
ARDEN AVENUE	4	741
BANNER LANE	17	2,796
BARTON CIRCLE	4	618
BARTON HILL DRIVE	8	1,792
BEAU COURT	1	210
BERESFORD AVENUE	9	2,206
BISCAYNE BOULEVARD	4	1,066
BOBKO BOULEVARD	4	599
BONNY BOULEVARD	2	184
BOUNDARY LANE	12	2,746
BOWMEN LANE	2	55
BRIAN DRIVE	13	2,162
BROOKPARK ROAD	1	4
BROOKVIEW BOULEVARD	2	271
BRUENING DRIVE	8	1,684
BURDEN DRIVE	2	158
CAMELOT DRIVE	5	1,088
CECELIA DRIVE	5	1,311
CHATEAU DRIVE	4	994
CHESTNUT HILLS DRIVE	4	496
CHEVROLET BOULEVARD	7	1,796
CLEARVIEW AVENUE	5	748
CLEARWATER DRIVE	6	1,186
COARL GABLES DRIVE	1	265
COCOA DRIVE	3	717
CORAL GABLES DRIVE	8	2,201
CORAL GABLES ROAD	1	276
COVENTRY DRIVE	15	3,117
CRANLYN ROAD	2	220
DALESIDE AVENUE	3	485
DARTMOOR AVENUE	5	1,113

Collection System TV Inspection - 2014

Parma

STREET	NUMBER OF SEGMENTS	TV FT
DARTWORTH AVENUE	2	215
DARTWORTH DRIVE	1	241
DAVID AVENUE	9	1,846
DAWN HAVEN DRIVE	1	215
DAWN VISTA OVAL	4	831
DAWNSHIRE AVENUE	1	298
DAWNSHIRE DRIVE	7	1,846
DAWNWOOD DRIVE	4	1,275
DAY DRIVE	3	178
DAYTONA DRIVE	7	1,499
DEBBY DRIVE	1	296
DECKER DRIVE	2	436
DELL HAVEN DRIVE	4	414
DELLWOOD DRIVE	2	329
DENTLER ROAD	1	135
DENVER	4	997
DOGWOOD LANE	17	2,998
DOVER LANE	17	3,572
EAST MIAMI DRIVE	1	123
EDGEHILL DRIVE	3	678
ELSMERE	1	349
ELY VISTA DRIVE	8	1,807
ENGLEWOOD DRIVE	3	736
EVENTIDE DRIVE	2	617
FENWAY DRIVE	7	1,119
FERNHILL AVENUE	2	255
FLEGER DRIVE	4	851
FOREST AVENUE	2	234
FOX HOLLOW DRIVE	2	620
FRUITLAND DRIVE	6	1,521
GLAMER DRIVE	12	2,798
GLENN DRIVE	1	45
GLENN OVAL DRIVE	4	911
GORDON DRIVE	10	1,660
GREEN ACRES DRIVE	4	767
GREENLEAF AVENUE	8	2,372
GROSS DRIVE	10	2,397
HACIENDA DRIVE	3	801

Collection System TV Inspection - 2014

Parma

STREET	NUMBER OF SEGMENTS	TV FT
HAMPSTEAD AVENUE	1	165
HEARTHSTONE ROAD	13	2,621
HIALEAH DRIVE	5	1,351
HICKORY HILL LANE	1	369
HIGHLAND HILLS COURT	1	266
HIGHVIEW DRIVE	1	103
HILLSDALE ROAD	4	973
HILLTOP DRIVE	2	590
HOERTZ ROAD	1	138
HOLBURN ROAD	4	587
HOPE HAVEN DRIVE	3	505
HOUSTON DRIVE	1	33
IRONWOOD CIRCLE	1	374
JACQUELINE DRIVE	6	1,319
JEANNE DRIVE	32	7,448
JOYCE DRIVE	1	48
KADER DRIVE	12	3,070
KENILWORTH AVENUE	1	302
KENNELWORTH AVENUE	1	301
KENNETH AVENUE	21	5,427
KEY WEST DRIVE	3	652
KEYSTONE ROAD	13	3,384
KING RICHARD DRIVE	8	1,807
KOCH DRIVE	6	1,181
KRUEGER AVENUE	11	2,534
LAKEVIEW DRIVE	11	1,402
LALEMANT DRIVE	9	1,860
LANGERFORD DRIVE	12	1,998
LASSITER DRIVE	8	1,483
LASSITER OVAL	1	372
LAURENT BUILDING	3	337
LAURENT DRIVE	14	1,982
LIDO COURT	2	406
LIGGETT DRIVE	5	1,267
LIME LANE	7	922
LORIMER DRIVE	7	2,086
LOURDES DRIVE	3	390
LYNETT DRIVE	9	1,669

Collection System TV Inspection - 2014

Parma

STREET	NUMBER OF SEGMENTS	TV FT
MANCHESTER ROAD	1	71
MANORFORD DRIVE	2	299
MAPLEWOOD ROAD	7	1,678
MARDA DRIVE	1	100
MARKO LANE	13	1,744
MARMORE AVENUE	6	318
MAYBERRY DRIVE	4	990
MEADOW LANE	4	390
MEADOWLAWN DRIVE	3	775
MERKLE AVENUE	1	232
MIRABEAU DRIVE	6	933
MOONCREST DRIVE	3	849
MOORE DRIVE	3	818
MUNICH DRIVE	2	425
NELSON BOULEVARD	6	1,255
NEWCOMB DRIVE	9	2,961
NEWPORT AVENUE	2	283
NIGHT VISTA DRIVE	7	1,960
NOBB HILL DRIVE	3	708
NORMANDY DRIVE	3	605
NORTH AVENUE	2	278
NORTH MIAMI DRIVE	2	391
NORTH SARASOTA DRIVE	4	800
OAK BROOK OVAL	2	273
OAKWOOD ROAD	11	2,433
ORLANDO DRIVE	2	311
PARK DRIVE	1	65
PARKHAVEN DRIVE	1	295
PARKLEIGH DRIVE	3	844
PEARL ROAD	2	802
PIN OAK DRIVE	8	1,149
PINE COVE DRIVE	3	411
PINE FOREST DRIVE	2	713
PINE OVAL	5	756
PLAZA DRIVE	7	1,558
PLEASANT HILL DRIVE	4	852
PLEASANT VALLEY	5	1,767
PLEASANT VALLEY ROAD	11	3,002

Collection System TV Inspection - 2014

Parma

STREET	NUMBER OF SEGMENTS	TV FT
RALSTON DRIVE	5	1,025
RALSTON EASEMENT	3	156
RAVENSWOOD DRIVE	7	1,392
REGENCY DRIVE	20	3,729
REICHERT ROAD	10	1,536
RENO DRIVE	4	962
RENWOOD DRIVE	27	5,861
RENWOOD ROAD	1	184
RIDGE EASEMENT	1	164
RIDGE ROAD	4	58
ROABNOKE CIRCLE	1	151
ROANOKE CIRCLE	3	431
ROANOKE DRIVE	4	559
ROMILLY OVAL	2	375
RONALD DRIVE	45	9,866
ROUSSEAU DRIVE	16	2,160
ROYAL RIDGE DRIVE	7	1,668
ROYALVIEW DRIVE	9	1,891
RUNNING BROOK DRIVE	5	1,327
RUNNINGBROOK DRIVE	3	515
SAINT ANDREWS DRIVE	6	1,431
SANDYHOOK DRIVE	16	3,120
SANFORD DRIVE	4	754
SARASOTA DRIVE	10	1,923
SASSAFRAS DRIVE	10	1,501
SCARLET OAK LANE	5	883
SCHWAB DRIVE	7	1,442
SELWICK DRIVE	13	2,653
SEQUOIA DRIVE	12	3,114
SIERRA OVAL	9	1,838
SKYLARK DRIVE	8	1,570
SLEEPY HOLLOW DRIVE	6	1,384
SNOW ROAD	1	247
SOUTH TAMARACK DRIVE	5	787
SOUTHINGTON DRIVE	2	400
ST PETERSBURG DRIVE	6	1,286
STANFIELD DRIVE	3	309
STARY DRIVE	12	2,557

Collection System TV Inspection - 2014

Parma

STREET	NUMBER OF SEGMENTS	TV FT
STATE ROAD	3	405
STAUNTON DRIVE	3	559
STORMES DRIVE	10	1,938
SUN VISTA DRIVE	2	604
SUNRAY DRIVE	2	355
TALBOT DRIVE	1	288
TAMARACK DRIVE	8	1,894
TANGLEWOOD LANE	4	1,234
TERRACE COURT	2	336
THOREAU DRIVE	17	3,627
THORNCLIFFE	1	194
THORNCLIFFE BOULEVARD	1	209
THORNTON DRIVE	3	82
TORRINGTON AVENUE	2	0
TRACY TRAIL	17	2,632
TREVOR LANE	8	1,584
TROY OVAL	3	490
TUCSON DRIVE	6	1,437
VALLEY LANE	2	319
VALLEY VILLAS	2	330
VALLEY VILLAS DRIVE	9	2,007
VELMA AVENUE	5	1,540
VIENNA DRIVE	11	3,294
VILLE COURT	1	182
VISTA LANE	2	337
WAKE ROBIN DRIVE	5	1,306
WARD ROAD	10	1,811
WENDY DRIVE	3	651
WEST 10 STREET	2	25
WEST 130 STREET	1	72
WEST 130TH STREET	1	165
WEST 33 STREET	19	5,170
WEST 48 STREET	8	1,917
WEST LIST LANE	1	19
WEST PARKVIEW DRIVE	17	2,279
WEST PLEASANT VALLEY	3	251
WEST PLEASANT VALLEY ROAD	3	670
WEST RIDGEWOOD DRIVE	11	1,886

Collection System TV Inspection - 2014

Parma

STREET	NUMBER OF SEGMENTS	TV FT
WEXFORD AVENUE	10	2,578
WEXFORD DRIVE	9	2,154
WHIPPOORWILL LANE	1	54
WHITAKER DRIVE	1	205
WILLISTON DRIVE	9	2,299
WINCHESTER DRIVE	7	1,504
WINTERPARK DRIVE	5	876
WOOD AVENUE	6	1,876
WOOD THRUSH DRIVE	8	1,607
WOODBURY HILLS DRIVE	16	2,804
WOOSTER PARKWAY	5	900
ZONA LANE	12	2,262
Grand Total:	1394	285,361

Section A-3

Projects Status*

* No service provided if section is blank

CCSE Project Reviews

<i>Project ID</i>	<i>Project Name</i>	<i>Municipality</i>	<i>Review Date</i>	<i>Approved</i>
14-004	DRIVETIME - BROOKPARK RD & COMMERCE PARKWAY WEST	PARMA	4-Mar-14	N
14-010	RUSH TRUCKING	PARMA	11-Aug-14	Y
14-016	GANLEY AUTO PRE-OWNED	PARMA	30-Jan-15	Y
14-023	RIDGE RD SAN SWR IMPROV - PHASE 1	PARMA	1-Oct-14	Y
14-029	BROADVIEW MULTICARE CENTER	PARMA	26-Aug-14	Y
14-030	PARMA HEADWALL REPAIR - PHASE 1	PARMA	16-Sep-14	Y
14-031	SPRAGUE RD. CULVERT REPAIR (NEAR PEACHTREE)	PARMA	26-Sep-14	Y
14-033	BROADROCK CT. & OLD ROCKSIDE RD - HDD & DRILL DROP	PARMA	16-Sep-14	N
14-035	BOB GILLINGHAM FORD	PARMA	29-Sep-14	Y
14-045	CHUPPA'S MARKETPLACE	PARMA	12-Nov-14	N
14-046	SEARS PLAZA OUTLET	PARMA	12-Nov-14	N
14-048	TRIAD METAL PRODUCTS	PARMA	25-Nov-14	Y
14-052	SPEEDWAY GAS STATION	PARMA	11-Dec-14	Y

Section A-4

Service Program*

* No service provided if section is blank

City of Parma

<u>Type</u>	<u>Community Total</u>
Sanitary Sewers	1,226,677 Feet
Manholes	5,256 (Approximately)

2014 Service Program

<u>Program</u>	<u>2014 Activity</u>
1) High Pressure Cleaning*	237,586 Feet
2) House Service	2,888 Calls
3) Television Inspection*	285,361 Feet
4) Construction Activities	762 Job(s)
5) Smoke and Dye Testing	8 Test(s)
6) Construction Permits Issued (Commercial)	10
(Residential)	78
7) Plan Review	13 Plan(s)
8) Capital Projects	18,848 Feet (Sewer Lines Inspected)

*Information includes footages for sanitary (collection system) and storm sewers.

Section A-5

Community Operating Expenses

City of Parma
2014 Operating Expenses

<u>Activity</u>	<u>Cost</u>
1. Maintenance of Sanitary Sewerage Systems	\$2,870,101
2. Pump Station Operation and Maintenance	\$41,228
3. Waste Water Treatment Plant Maintenance	\$ 0
4. Engineering and/or Inspection	\$497,483
5. Capital Expenses (See Section A-6 if any)	\$2,724,376
6. Sanitary Overhead	\$ 0
 Total Expenses:	 \$6,133,188

Section A-6

Community Capital Expenses

* No service provided if section is blank

City of Parma

2014 Capital Expenses

Fernhill Loan Payment	\$ 102,446
Sanitary Sewer Repair	\$ 89,763
Infrastructure Maintenance	\$ 37,506
Fruitland Lining	\$ 18,852
Pershing Storm Lining	\$ 108,816
Pershing Sanitary Lining	\$ 94,892
Richard, Nathan Lining	\$ 16,876
Hilltop Lining	\$ 9,348
List Lane Lining	\$ 298,564
Kearney, Snow Lining	\$ 105,864
Snow Road Lining	\$ 11,701
Augustine Lining	\$ 17,106
Norris Lining	\$ 46,056
Somia Lining	\$ 66,868
Lucerne Lining	\$ 84,400
Grantwood Lining	\$ 7,528
W. Ridgewood Lining	\$ 28,248
Columbia Gas Reimbursement	\$ 1,617
Pershing Storm Lateral Repair	\$ 36,880
Pershing Sanitary Lateral Repair	\$ 83,988
Cherry Lateral Repair	\$ 20,322
Hartmann Driveway Reimbursement	\$ 2,205
Bagley/ Pleasant Valley PTI	\$ 6,502
Southington Lateral Repair	\$ 67,850
Day Drive Water Main Replacement	\$ 160,320
Parkhaven Water Main Replacement	\$ 241,752
West Ridgewood Lateral Repair	\$ 8,417
Longwood Lateral Repair	\$ 16,700
Winthrop Lateral Repair	\$ 50,260
Somia Lateral Repair	\$ 78,492
Broadview Drill Drop OWDA Fee	\$ 1,187
W. 130th Lateral Repair	\$ 55,597
Ridgewood Sanitary Lateral Repair	\$ 390,207
Ridgewood Storm Lateral Repair	\$ 34,026
E. Linden P.S. Repair	\$ 71,510
Belmere Lateral Repair	\$ 34,750
Kelsey Lateral Repair	\$ 34,107
Robert Storm Lateral Repair	\$ 25,249
Lucerne Lateral Repair	\$ 24,853

W. 44th Lateral Repair	\$	11,428
Maplecrest Lateral Repair	\$	28,219
W. Ridgewood Storm Repair	\$	84,593
Broadview Drill Drop PTI	\$	8,511

Total Capital Expenses: **\$ 2,724,376**

CONTACT INFORMATION

Address

Cuyahoga County Department of Public Works
 6100 West Canal Road
 Valley View, OH 44125
 Email: Publicworks@cuyahogacounty.us
 Website: Publicworks.cuyahogacounty.us

Michael W. Dever, MPA..... Director of Public Works
 David E. Marquard, P.E.,P.S. Design & Construction Administrator
 Michael W. Chambers, CPAFiscal Officer
 Bryan J. Hitch..... Maintenance Superintendent

<i>Dispatch Office</i> (216) 443-8201	<i>Dispatch Email</i> PWDDispatch@cuyahogacounty.us
<i>Administration</i> (216) 443-8215	<i>Inspection & Permits</i> (216) 443-8211
<i>Engineering</i> Hugh Blocksidge, P.E., Chief Engineer (216) 443-8205	<i>Sewer Maintenance</i> Gary Green, Senior Supervisor (216) 443-8225
<i>Lateral Services (House Crews)</i> John Gribble, Supervisor (216) 443-8227	<i>Inflow & Infiltration</i> Suzanne Britt, Supervisor (216) 443-3533
<i>Construction</i> Mitch Holt, Supervisor (216) 443-8229	<i>Televised Inspection</i> Todd Swindell, Supervisor (216) 443-8224
<i>Sewer Jetting</i> Guy Swindell, Supervisor (216) 443-8226	<i>Pump Station Operations</i> William Applegarth, Supervisor (216) 443-8295