



Cuyahoga County
Together We Thrive

2017 Annual Report

Prepared for the:

City of Brecksville



By the: **Department of Public Works**





March 1, 2018

The Honorable Jerry N. Hruby
City of Brecksville
9069 Brecksville Road
Brecksville, Ohio, 44141

Dear Mayor Hruby,

As the Director of Public Works, I am pleased to submit the 2017 Annual Report for the City of Brecksville. Our work within the communities, including yours, focuses on addressing infrastructure needs and meeting Ohio EPA goals for collection system operation and maintenance. We have continued to improve our efficiency for sanitary and storm sewer maintenance throughout the County by maintaining a second shift to enable us to reduce overtime and to work in areas where normal working hour traffic is problematic. Our goal is to provide a high level of service in a cost-effective manner.

This report contains a detailed overview of the work completed within your municipality in the past year. The overview of the work performed includes the following: collection system jet cleaning and TV inspection, project review status, service program summary details, as well as community operating and capital expenses.

The County is transitioning to emailing the annual reports and will continue to do so going forward. For your convenience, this year we are also providing you with three (3) hard copies of the report but in the future hard copies will only be available by request. The report is also available on our website at <http://publicworks.cuyahogacounty.us/en-US/Sewer-Maintenance-Services.aspx>

My staff is available to meet with you at your convenience should you wish to discuss this report or any of the services that our department provides.

I am pleased and grateful for the opportunity of serving you through the Cuyahoga County Department of Public Works.

Respectfully submitted,

Michael W. Dever, MPA, Director
Department of Public Works

cc: (with attachments)
Gerald M. Wise, P.E., Engineer

Table of Contents



Overview.....	1
Appendix Description.....	8
Community Streets Cleaned.....	A-1
Community Streets Televised.....	A-2
Project Review Status.....	A-3
Service Program Summary.....	A-4
Community Operating Expenses.....	A-5
Community Capital Expenses.....	A-6
Contact Information.....	Rear Folio



OVERVIEW



Established in 1919, the office of the Cuyahoga County Sanitary Engineer was created to provide administrative authority in matters of wastewater, storm water, and water supply management. In 2012, the Sanitary Engineering Division (formerly CCSE) became a part of the Cuyahoga County Department of Public Works, and now operates under County Executive Armond Budish.

The Division's focus is on the maintenance and repair of aging sewer lines, needs assessment, engineering feasibility studies, as well as other infrastructure-related issues, all of which have a direct impact on commercial and residential development, job creation, and expanding the tax base in the communities served by the Department of Public Works. Furthermore, the Division is a major source of technical information for mayors, municipal engineers, and service directors and provides them with guidance for making infrastructure decisions within their community. The Division has considerable experience in the maintenance, repair, and rehabilitation of sanitary and storm sewer lines, as well as significant expertise with respect to the operation and maintenance of pump stations.

The Sanitary Engineering Division of Public Works currently operates in 38 communities by agreement. Pursuant to such agreements, it maintains more than 1,200 miles of sanitary sewers and 800 miles of storm sewers, operates 56 sewage-pumping stations, and maintains two wastewater treatment plants. Working in cooperation with the Ohio Environmental Protection Agency (Ohio EPA), the Northeast Ohio Regional Sewer District (NEORS), the Cuyahoga County Board of Health, and various communities the Division works to maintain water quality through the identification and investigation of illicit discharges as well as the construction of new sanitary sewers.

All funds used for maintenance and repair of the sewers and other sewage facilities are generated through fees and assessments. The Division does not receive a subsidy from the County's general fund to perform such maintenance activities.

The Sanitary Engineering Division of the Department of Public Works has been in the forefront of regionalism efforts. With services provided to more than half of the County's 59 communities, the Division continues to maintain reasonable rates and improve infrastructure throughout the area.





GOALS

The Sanitary Division of the Department of Public Works has three (3) major goals:



1. Operate and maintain the sanitary sewerage systems to assist the communities in meeting the goals and objectives of the EPA Capacity Management Operation and Maintenance (CMOM) guidelines.
2. Provide guidelines for the design and construction through the “*Uniform Standards for Sewerage Improvements*” and the “*Rules and Regulations.*”
3. Issue sewer connection permits and provide construction inspection for new sanitary sewers and new connections to existing sanitary sewers.

The goals of the Department of Public Works with respect to the maintenance and repair of sewers are attained through the activities of our three main groups working together: Maintenance Services; Engineering & Construction Services; and, Administrative Services.

MAINTENANCE SERVICES

- Reduce the number of flooded basements by maintaining existing capacity in the collection systems, minimize the inflow/infiltration of storm water to the sanitary system, and evaluate the structural integrity of the sewerage system;
- Increase maintenance efficiency to reduce operating costs and provide more available funds for capital improvement projects and repairs;
- Operate wastewater treatment plants in compliance of National Pollution Discharge Elimination System (NPDES) permit parameters;
- Maintain and inspect the existing collection system to achieve EPA CMOM maintenance goals;
- Operate and maintain pumping stations;
- Illicit Discharge Detection and Elimination Services





ENGINEERING AND CONSTRUCTION SERVICES

- Task Order preparation for repairs and rehabilitation;
- Plan review and approval of all new sewer improvements within the County service area;
- Engineering analysis (required for operation of facilities and the collection system);
- Capital improvement planning;
- Construction management and inspection;
- Provide guidelines for new construction through use of *Uniform Standards for Sewerage Improvements*;
- Provide infrastructure needs assessment for communities;
- Project design;
- Construction inspection of new wastewater collection systems within the county service area; and,
- Record keeping, as-built plans and test tee location.



ADMINISTRATIVE SERVICES

- Issuance of connection permits;
- Issuance of sewer builders' licenses;
- Maintenance of Record Drawings;
- Geographical Information Systems (GIS) for development and implementation;
- Fiscal oversight of annual operating budget and capital improvement budget;
- Grant and loan administration; and,
- Licensing and permitting of more than 200 contractors.

SUMMARY OF COUNTY-WIDE MAINTENANCE SERVICES

▪ SEWERS

- High-pressure jetting of sewers in the right-of-way, approximately 244 miles of sewers in 2017;
- Point repairs of sewers, force mains, and structures; 3,881 construction visits
- Cleaning of service laterals, including emergency maintenance and 24-hour on-call team for resident issues;
- Televising of lines to provide condition ratings and to identify possible failures or deficiencies, approximately 212 miles of sewers;
- Inflow and Infiltration, 804 visits;
- Licensed operators to monitor the condition of the treatment plants and pumping stations, as well as implement upgrades and preventative maintenance.





The Maintenance Services section provides a full-service program to clean, provide NASSCO PACP condition ratings, maintain structural integrity, and perform repairs on sanitary and storm sewers. The objective of the program is the cleaning of all sanitary sewers every three years and performing video inspection every six years which is well within the NEORSD's "Best Management Practices" guidelines.

▪ HOUSE LATERAL SERVICES

The Division cleaned 9,694 house connections in 2017. The goal is to alleviate sewer back-ups by clearing blocked mains and cleaning service connections to restore sewer capacity.

The House Lateral Service Department performs flow monitoring for Inflow and Infiltration (I&I) analysis and performs smoke testing, dye testing and lateral sewer inspection to identify I&I sources and locations of illicit

discharges. The Department works with the communities, the Ohio EPA and the NEORSD to protect local waterways.

▪ PUMPING STATIONS

The County operates 56 pumping stations throughout the 38 communities pursuant to maintenance agreements. A Supervisory Control and Data Acquisition (SCADA) system monitors the stations. The system provides alarms and operational status through a central computer that is accessed from a remote computer providing 24-hour monitoring. New pump stations are added to the SCADA as they come on-line. Our maintenance staff consists of experienced operators and technicians enabling us to repair most problems in-house, therefore keeping costs down. Their preventive maintenance program and dedication to the job has reduced emergency call-outs and overflows.





■ **WASTEWATER TREATMENT PLANTS**

The County operates two package wastewater treatment plants. The standards for each facility are set by the Ohio EPA through the National Pollution Discharge Elimination System (NPDES) permit. The support staff consists of wastewater operators licensed by the Ohio EPA who monitor the conditions of the plants and make necessary process adjustments to meet the requirements of each NPDES permit.

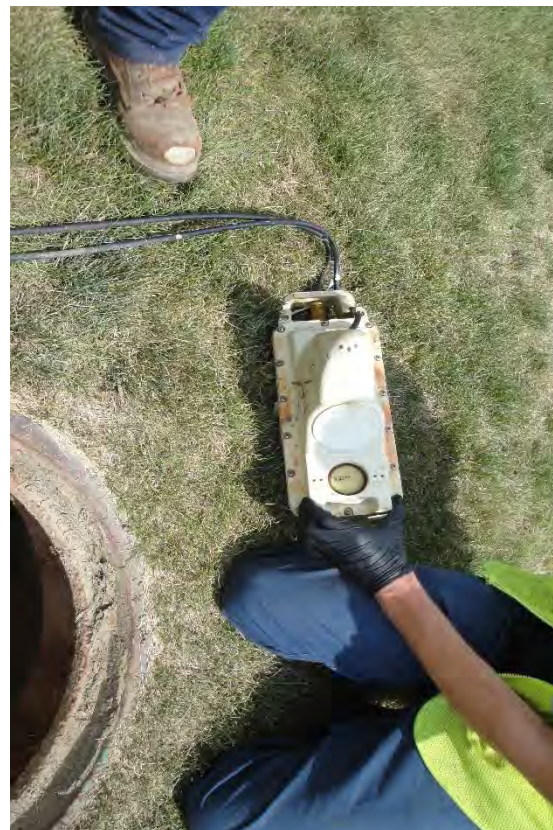


■ **CAPACITY, MANAGEMENT, OPERATION, AND MAINTENANCE PROGRAM (CMOM)**

The CMOM Program is a set of “best management practices” that have been developed by the industry and are applied over the life cycle of the collection system. It is these general practices that are taken into consideration when a system is being reviewed by a federal or state agency. Improvement and recommendations are provided by the agencies based on deficiencies identified in the sanitary sewer system.



We continue to work with the NEORSR through their community discharge program and the Ohio EPA to ensure that our department’s best practices meet the CMOM goals.





SUMMARY OF ENGINEERING & CONSTRUCTION SERVICES

Engineering and construction services provides technical services to the communities including, but not limited to capital project planning, grant and loan administration, design engineering, construction management, and inspection of sanitary and storm sewers, pump stations, and wastewater treatment facilities.

A sewer repair and rehabilitation program is managed by in-house personnel supplemented with two third-party contractors. Under the existing sewer maintenance agreements, the communities issue Task Orders to the County for repair and rehabilitation based on video inspection information and requests from the communities. A specific Engineer is assigned to each community to provide an individual contact for collection system related issues.

In 2017, design plans were reviewed for nearly 50 construction projects on behalf of member communities. Engineering also coordinates and analyzes the results of field testing and flow monitoring to detect and eliminate storm water inflow/infiltration from the sanitary sewer system and illicit discharges to the storm sewer system. Record drawings are prepared, then scanned and filed for record keeping. Information on the new sewers and service connections are provided to our IT personnel for incorporation in the County's Geographical Information System (GIS).

Engineering and construction also oversee capital construction projects and develop financial packages in the form of grants and loans obtained from the state of Ohio. These funds are utilized for lining, repairing, replacing, and rehabilitating existing sanitary and storm sewerage systems.

The construction staff provides inspection for all new sanitary sewers and service laterals connecting to existing sewers. The Inspectors ensure that projects are constructed in conformance to design plans, specifications and the *"Uniform Standards."*





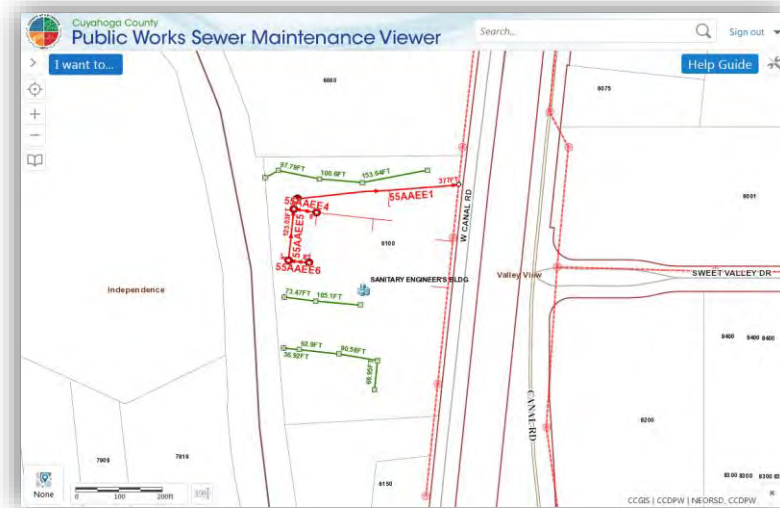
SUMMARY OF ADMINISTRATIVE SERVICES

■ PERMITS

This department operates in 38 communities pursuant to sewer maintenance agreements. Its major functions include issuance of sewer connection permits and the registration of licensed and bonded contractors able to obtain connection permits and install sanitary sewers within the member communities. The Department also maintains the permanent records for sewer construction projects and provide information to all county departments, engineering consulting firms, contractors, and the public.

■ INFORMATION TECHNOLOGY

Information Technology (IT) provides computer and analytical support to internal end-users and communities serviced by the Department of Public Works. It is responsible for the design, implementation and maintenance of our Geographical Information System (GIS) and other relational database systems, as well as guiding data acquisition tasks throughout the Department. The GIS mapping program catalogues the location of sewer systems and performs analysis on spatial data. This ability supports the planning, design, and maintenance of sewer systems, and ensures user fees are appropriately assessed and collected. Furthermore, the mapping program now features attached permits.



Our Geographical Information System is continually being updated and expanded to include information on repair and rehabilitation activities as well as system maintenance and inspection activities. Information is shared between the County, member communities, and the NEORSD to improve services and foster collaboration.

■ FINANCE

Finance provides support services to various units within the Department of Public Works. Automated cost accounting programs and systems ensure accurate tracking and monitoring of expenditures, revenues, rate structures and other data that provide financing for capital projects and operational budgets. All systems and programs are operated under generally accepted accounting principles. Public Works oversees an annual storm and sanitary sewer operating budget of more than \$18 million. Finance is responsible for accounts receivable, accounts payable, cost accounting, audit, inventory control, capital project financing, purchasing, and sewer assessment revenue management for member communities.

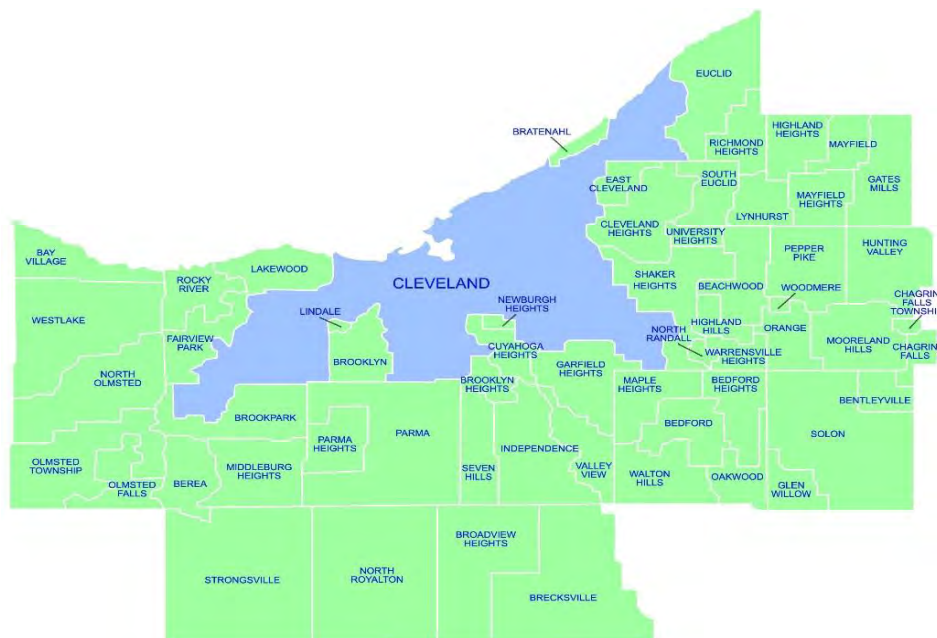


APPENDIX DESCRIPTION*

The following appendices contain a variety of reports representing the services provided to communities in 2017. The Public Works Department follows a manhole-to-manhole, sewer segment-based accounting method for jet cleaning and TV (video) inspection maintenance services. The first two reports contain listings of the collection system cleaned and inspected for the year by street. The following report discloses the more significant projects submitted and reviewed by the Permit and Engineering & Construction Departments during the year for your community. Smaller review services such as house connections or ongoing, intermittent review of large multi-phase projects spanning several years of development are not shown on this report. The final appendices provide a breakdown of services including house visits, inflow/infiltration studies, and construction activity, operating expenses, and capital project costs contracted for the community.

A map showing areas where collection system mainlines were jet cleaned and TV inspected, construction crew activity locations, house visits and if house lateral connections needed to be cleaned or inspected is available on our website at <http://publicworks.cuyahogacounty.us/en-US/Sewer-Maintenance-Services.aspx>. Adobe Corporation's free reader software is required and can be downloaded from www.adobe.com.

* **Please note:** These appendix reports are provided only to communities for which the specific service is provided by the Department of Public Works. For example, if regularly scheduled mainline cleaning service is not provided for your community, a map was not produced. Similarly, if project review or capital project management services are not provided to your community, then there is no corresponding report. Certain communities are provided limited maintenance on county improvement mainlines and/or facilities only.



SANITARY FLEET FACTS

THE POWER OF REGIONALISM



Current vehicles & equipment	Quantity
House Trucks	12
Specialized Plate Truck & specialized vehicles for catch basin repair	5
Combination Jet-Vac & Straight Jet Trucks	12
TV Camera Trucks	7
Backhoes, Mini Excavators & Rubber Wheel Loader	10
Class 5 Dump Trucks	3
Construction trucks	7
1 ton trucks for pump station service	5
43,000 to 53,000 GVWR single-axle dump trucks	3
58,000 to 60,000 GVRW tandem axle dump trucks	8
Class 550 with crane for pump station service	2
20-25 ton trailers	10
Small Trailers	12





Community Streets Cleaned*



Section A-1

*No service provided if section is blank

Collection System Jet Cleaning

BRECKSVILLE

	STREET	NUMBER OF SEGMENTS	JET FT
TYPE	SANITARY	Street Count 93	
	AMBER LANE	12	2,648
	ASHLAWN DRIVE	11	2,547
	ASHLAWN EASEMENT	1	325
	BARKLEIGH CIRCLE	2	211
	BRADFORD LANE	9	1,463
	BRECKSVILLE ROAD	30	6,404
	BROOKVIEW DRIVE	4	857
	CAMBRIDGE DRIVE	5	962
	CARDINAL LANE	5	1,512
	CARRIAGE HILL DRIVE	12	2,426
	CARRIAGE HILL EASEMENT	1	140
	CHAUTAUQUA TRAIL	3	539
	CHEROKEE LANE	4	830
	CHIPPEWA ROAD	17	3,628
	CHIPPEWA TRAIL	4	954
	CINNABAR DRIVE	9	1,636
	COACHMAN COURT	4	1,012
	COMPASS POINT DRIVE	5	1,137
	CRABTREE LANE	12	1,873
	CRANBROOK DRIVE	1	299
	CRINKLEROOT CLEARING	2	493
	CRYSTAL CREEK DRIVE	6	1,726
	DAVENTREE DRIVE	3	667
	DAVENTREE EASEMENT	3	670
	DUNBAR EASEMENT	4	757
	DUNBAR LANE	9	1,629
	FARVIEW OVAL	2	332
	FARVIEW ROAD	11	2,872
	FITZWATER ROAD	36	7,726
	FOREST EASEMENT	2	400
	FOREST LANE	5	872
	FORESTDALE DRIVE	3	623
	FROST LANE	6	1,381
	GREENHAVEN PARKWAY	13	2,712
	GRENADIER LANE	2	501

Collection System Jet Cleaning

BRECKSVILLE

STREET	NUMBER OF SEGMENTS	JET FT
HAROLD EASEMENT	1	120
HAWTHORNE DRIVE	4	1,097
HIGHLAND DRIVE	1	230
HILTON ROAD	5	1,576
HINCKLEY CIRCLE	2	458
HOLLIS COURT	2	416
HOLLIS LANE	11	1,877
IROQUOIS TRAIL	4	1,154
LAUREL LANE	7	1,583
MAIDSTONE DRIVE	2	350
MEADOW LANE	9	1,340
MERCER LANE	6	1,223
MILL ROAD	1	214
OAK PARK DRIVE	1	390
OAKHURST CIRCLE	15	3,234
OLD QUARRY LANE	11	2,351
OLD ROYALTON ROAD	1	280
ORIANNA STREET	2	415
OTTAWA DRIVE	2	607
PARK PLACE DRIVE	4	590
PARTRIDGE TRAIL	4	1,205
PERSHING DRIVE	2	515
PIONEERS POINT	1	244
PLANTATION DRIVE	11	2,158
PRINCESS COURT	1	390
PROVINCE LANE	11	2,139
RED OAKS DRIVE	1	202
RIVERCREST DRIVE	19	2,553
RIVERCREST EASEMENT	1	210
RIVERVIEW ROAD	37	8,685
ROBIN LANE	15	2,848
ROCKLEDGE DRIVE	10	1,957
ROYALTON ROAD	3	661
SETH PAYNE STREET	2	550
SETTLERS PASSAGE	18	3,863
SOMERSET DRIVE	5	1,089
SOMERSET OVAL	1	306

Collection System Jet Cleaning

BRECKSVILLE

STREET	NUMBER OF SEGMENTS	JET FT
SOUTH EDGERTON ROAD	1	143
STOVER LANE	4	1,015
SUNRISE EASEMENT	1	216
SUNRISE TRAIL	5	839
SUNSTONE DRIVE	7	1,597
TANAGER OVAL	1	230
TANAGER TRAIL	28	5,258
THORNTREE DRIVE	6	991
TIMBER EASEMENT	1	206
TIMBER TRAIL	27	4,949
WARBLERS ROOST	5	731
WEST FITZWATER ROAD	2	596
WHITE OAKS CIRCLE	1	283
WHITEWOOD ROAD	47	10,049
WIESE EASEMENT	2	445
WIESE ROAD	11	3,482
WINDING WAY	18	4,084
WINDSWEPT DRIVE	1	323
WINDWARD HILLS DRIVE	1	314
WOODMILL CIRCLE	2	360
WOODSTONE DRIVE	10	1,525
Total:	672	141,480

TYPE	STORM	Street Count	16
	BARR ROAD	2	320
	BRECKSVILLE ROAD	2	485
	BROOKVIEW DRIVE	1	238
	CHIPPEWA ROAD	4	1,188
	COMPASS POINT SOUTH EASEMENT	2	250
	ENGLISH DRIVE	2	624
	GREENBRIER DRIVE	3	300
	HOLLIS LANE	1	318
	OLD ORCHARD DRIVE	1	122
	OLD ORCHARD EASEMENT	1	140
	OLD ROYALTON ROAD	4	393
	OXFORD TRAIL	1	300
	RIVERVIEW ROAD	5	765

Collection System Jet Cleaning

BRECKSVILLE

STREET	NUMBER OF SEGMENTS	JET FT
ROSEMONT DRIVE	1	300
SOUTH EDGERTON ROAD	4	490
WHITEWOOD ROAD	1	275
Total:	35	6,508
Annual Report Jet Cleaning	Grand Total:	707
		147,988



Community Streets Inspected*



Section A-2

*No service provided if section is blank

Collection System TV Inspection

BRECKSVILLE

	STREET	NUMBER OF SEGMENTS	TV FT
TYPE	SANITARY	Street Count 98	
	AMBER LANE	10	2,216
	ASHLAWN DRIVE	7	1,631
	ASHLAWN EASEMENT	1	93
	BARR ROAD	4	1,195
	BOXELDER DRIVE	5	883
	BRADFORD LANE	4	757
	BRECKSVILLE ROAD	7	1,445
	BROOKVIEW DRIVE	5	1,010
	CAMBRIDGE DRIVE	2	238
	CARDINAL LANE	4	1,134
	CARRIAGE HILL DRIVE	9	1,849
	CHAPEL HILL DRIVE	3	883
	CHAUTAUQUA TRAIL	4	638
	CHEROKEE LANE	2	629
	CINNABAR DRIVE	7	1,329
	COACHMAN COURT	2	506
	COMPASS POINT DRIVE	2	511
	CRABTREE LANE	8	1,253
	CRANBROOK DRIVE	8	1,652
	CRESTVIEW DRIVE	6	916
	CRINKLEROOT CLEARING	2	491
	CROSSWINDS LANE	6	1,488
	CRYSTAL CREEK DRIVE	7	1,840
	DAISY AVENUE	1	192
	DAVENTREE DRIVE	3	658
	DAVENTREE EASEMENT	3	656
	DEER PATH	3	812
	DUNBAR EASEMENT	3	416
	DUNBAR LANE	4	746
	FARVIEW OVAL	2	333
	FARVIEW ROAD	11	2,850
	FAWN LANE	4	1,124
	FITZWATER ROAD	15	3,420
	FOREST EASEMENT	2	405
	FOREST LANE	1	285
	FORESTDALE DRIVE	3	625

Collection System TV Inspection

BRECKSVILLE

STREET	NUMBER OF SEGMENTS	TV FT
FROST LANE	4	841
GLEN DRIVE	3	372
GLENWOOD TRAIL	8	1,857
HAWTHORNE DRIVE	4	1,121
HILTON ROAD	5	1,595
HINCKLEY CIRCLE	2	455
HOLLIS COURT	2	420
HOLLIS LANE	16	3,470
HUNTING VALLEY LANE	8	1,374
IROQUOIS TRAIL	1	143
KNOLLS LANE	2	379
LAKEPARK DRIVE	3	567
LAUREL LANE	7	1,442
LAWN PARK DRIVE	5	1,250
LOG CABIN COURT	3	551
LONG FOREST DRIVE	13	2,003
MAIDSTONE DRIVE	2	360
MEADOW LANE	5	620
MERCER LANE	6	1,101
MILLER ROAD	2	626
OAK PARK DRIVE	1	395
OAKHURST CIRCLE	11	1,949
OLD QUARRY LANE	11	2,359
ORIANNA STREET	2	411
OTTAWA DRIVE	2	615
OVERBROOK DRIVE	5	623
OXFORD TRAIL	8	1,948
PARK PLACE DRIVE	4	755
PARTRIDGE TRAIL	4	1,207
PERSHING DRIVE	4	1,150
PINEVIEW OVAL	4	521
PIONEERS POINT	1	245
PLANTATION DRIVE	7	1,349
PRINCESS COURT	1	390
PROVINCE LANE	8	1,584
RED OAKS DRIVE	1	200
RIVERCREST DRIVE	19	2,569

Collection System TV Inspection

BRECKSVILLE

STREET	NUMBER OF SEGMENTS	TV FT
RIVERCREST EASEMENT	1	215
RIVERVIEW ROAD	15	4,176
ROBIN LANE	10	1,920
ROCKLEDGE DRIVE	7	1,335
ROSEMONT DRIVE	2	594
ROYALTON ROAD	16	3,420
SETH PAYNE STREET	2	564
SETTLERS PASSAGE	16	3,311
SOMERSET DRIVE	3	837
STOVER LANE	4	1,030
SUNRISE TRAIL	3	450
SUNSTONE DRIVE	6	1,293
TANAGER OVAL	1	234
TANAGER TRAIL	22	3,893
THORNTREE DRIVE	5	734
TIMBER TRAIL	18	3,369
VERA DRIVE	3	700
WARBLERS ROOST	5	745
WESTWOOD DRIVE	6	1,094
WHITE OAKS CIRCLE	1	280
WHITEWOOD ROAD	35	7,730
WINDING WAY	10	1,933
WINDSWEPT DRIVE	8	1,101
WOODCREST DRIVE	7	744
WOODSTONE DRIVE	6	969
Total:	576	118,597

TYPE	STORM	Street Count	31
	BARR ROAD	5	318
	BRECKSVILLE ROAD	13	1,797
	BROOKVIEW DRIVE	2	310
	CANYON POINT CIRCLE	4	288
	CARDINAL LANE	1	93
	CHAPEL HILL DRIVE	1	224
	CHIPPEWA ROAD	7	1,915
	COMPASS POINT SOUTH EASEMENT	2	231
	ENGLISH DRIVE	3	381

Collection System TV Inspection

BRECKSVILLE

STREET	NUMBER OF SEGMENTS	TV FT
GATEWOOD DRIVE	2	166
GREYSTONE PARKWAY	4	376
HAWTHORNE DRIVE	1	65
HIDDEN CANYON DRIVE	1	110
HIGHLAND DRIVE	3	937
IROQUOIS TRAIL	1	170
LOG CABIN COURT	2	380
MALLARD EASEMENT	1	116
MEADOW EASEMENT	2	105
MILL ROAD	1	300
OAKHURST CIRCLE	4	1,260
OLD ORCHARD EASEMENT	1	122
OLD ORCHARD ROAD	1	140
OLD ROYALTON ROAD	1	297
OXFORD TRAIL	2	375
RIVERVIEW ROAD	6	887
ROBIN LANE	1	272
ROCKLEDGE DRIVE	1	26
SNOW BLOSSOM LANE	3	424
SOUTH EDGERTON ROAD	4	490
WHITEWOOD ROAD	3	770
WINDING WAY	20	4,816

Total: 103 18,161

Annual Report TV Inspection

Grand Total: 679 136,758



Project Review Status*



Section A-3

*No service provided if section is blank

Brecksville Project Review

Project ID	Project Name	Approval Date
16-065 (2)	The Village Improvement Plans	3-Apr-2017
17-026 (1)	Brecksville Police Station	26-Sep-2017

Service Program Summary*



Section A-4

*No service provided if section is blank

City of Brecksville

<u>Type</u>	<u>Community Total</u>
Sanitary Sewers	413,962 Feet
Manholes	1,921 (Approximately)

2017 Service Program

<u>Program</u>	<u>2017 Activity</u>
1) High Pressure Jet Cleaning Sanitary - 141,480 Feet Storm - 6,508 Feet	147,988 Feet
2) House Service	396 Calls
3) Television Inspection Sanitary - 118,597 Feet Storm - 18,161 Feet	136,758 Feet
4) Construction Activities	180 Job(s)
5) Smoke and Dye Testing	1 Test(s)
6) Construction Permits Issued (Commercial) (Residential)	3 55
7) Plan Review	2 Plan(s)
8) Construction Inspection a) Main Lines Inspected b) Service Laterals & Site Sewers Inspected	11,704 Feet 24,832 Feet
9) Catch Basins Cleaned	7

Community Operating Expenses*



Section A-5

*No service provided if section is blank

City of Brecksville
2017 Operating Expenses

<u>Activity</u>	<u>Cost</u>
1. Maintenance of Sanitary Sewerage Systems	\$1,053,198
2. Pump Station Operation and Maintenance	\$267,723
3. Waste Water Treatment Plant Maintenance	\$ 0
4. Engineering and/or Inspection	\$340,150
5. Capital Expenses (See Section A-6 if any)	\$756,028
 Total Operating Expenses:	 \$2,417,099

Community Capital Expenses*



Section A-6

*No service provided if section is blank

City of Brecksville

2017 Capital Expenses

Beechwood Drive Lining	\$ 36,312
Bradford Pump Station - URS	\$ 750
Wetlands Repair	\$ 124,127
Royalton Road Lining	\$ 22,750
Bradford Pump Station PT1	\$ 5,030
Old Quarry Lane Pump Station Reimbursement	\$ 29,521
Bradford Pump Station Reimbursement	\$ 13,653
Amber Lane Culvert Reimbursement	\$ 8,871
Snow Blossom Lane Repair	\$ 12,073
Southern Estates Pump Station Rehabilitation	\$ 220,537
Winding Way Lining	\$ 27,732
Monticello Drive Pump Station Reimbursement	\$ 1,256
Bradford Pump Station Reimbursement	\$ 3,307
Hickory Ridge Drive Reimbursement	\$ 7,145
Echo Hills Pump Station Loan Payment	\$ 109,575
Dewey Road Pump Station Loan Payment	\$ 133,389

Total Capital Expenses: **\$ 756,028**

CONTACT INFORMATION

Cuyahoga County Department of Public Works
6100 West Canal Road
Valley View, OH 44125

Email: Publicworks@cuyahogacounty.us

Website: Publicworks.cuyahogacounty.us

Michael W. Dever, MPA	Director of Public Works
David E. Marquard, P.E.,P.S	Design & Construction Administrator
Michael W. Chambers, CPA	Finance & Operations Administrator
Bryan J. Hitch	Sewer Maintenance Superintendent
Hugh Blocksidge P.E	Chief Engineer Sanitary Design



Department of Public Works Administrative Headquarters
2079 East Ninth Street- 5th Floor
Cleveland, Ohio 44115

Dispatch Office	(216) 443-8201
Dispatch Email	PWDispatch@cuyahogacounty.us
Administration	(216) 348-3867
Inspection & Permits	(216) 443-8211
Sewer Maintenance	Gary Green, Senior Supervisor(216) 443-8225
Lateral Services	Suzanne Britt, Supervisor(216) 443-3553
Construction (EAST)	Mitch Holt, Supervisor(216) 443-8229
Construction (WEST)	John Gribble, Supervisor(216) 443-8227
Sewer Jetting	Guy Swindell, Supervisor(216) 443-8226
Televised Inspection	Todd Swindell, Supervisor(216) 443-8224
Pump Station Operations	William Applegarth, Supervisor(216) 443-8295
Sewer Maintenance	Dave Novak, 2nd Shift Supervisor(216) 348-4238
Sewer Maintenance	Patrick Mauk, 2nd Shift Supervisor(216) 348-3849
Sewer Maintenance	Tom Noy, 2nd Shift Supervisor(216) 348-3901

Cuyahoga County Department of Public Works

2079 East Ninth Street | Cleveland, OH 44115 | 216.348.3800



Cuyahoga County
Together We Thrive