



Cuyahoga County
Together We Thrive

2017 Annual Report

Prepared for the: **City of Mayfield Heights**



By the: **Department of Public Works**





March 1, 2018

The Honorable Anthony DiCicco
City of Mayfield Heights
6154 Mayfield Road
Mayfield Heights, Ohio, 44124

Dear Mayor DiCicco,

As the Director of Public Works, I am pleased to submit the 2017 Annual Report for the City of Mayfield Heights. Our work within the communities, including yours, focuses on addressing infrastructure needs and meeting Ohio EPA goals for collection system operation and maintenance. We have continued to improve our efficiency for sanitary and storm sewer maintenance throughout the County by maintaining a second shift to enable us to reduce overtime and to work in areas where normal working hour traffic is problematic. Our goal is to provide a high level of service in a cost-effective manner.

This report contains a detailed overview of the work completed within your municipality in the past year. The overview of the work performed includes the following: collection system jet cleaning and TV inspection, project review status, service program summary details, as well as community operating and capital expenses.

The County is transitioning to emailing the annual reports and will continue to do so going forward. For your convenience, this year we are also providing you with three (3) hard copies of the report but in the future hard copies will only be available by request. The report is also available on our website at <http://publicworks.cuyahogacounty.us/en-US/Sewer-Maintenance-Services.aspx>

My staff is available to meet with you at your convenience should you wish to discuss this report or any of the services that our department provides.

I am pleased and grateful for the opportunity of serving you through the Cuyahoga County Department of Public Works.

Respectfully submitted,

Michael W. Dever, MPA, Director
Department of Public Works

cc: (with attachments)
Joseph Fornaro, Service Director
Dan Gerson, P.E., P.S., Engineer

Table of Contents



Overview.....	1
Appendix Description.....	8
Community Streets Cleaned.....	A-1
Community Streets Televised.....	A-2
Project Review Status.....	A-3
Service Program Summary.....	A-4
Community Operating Expenses.....	A-5
Community Capital Expenses.....	A-6
Contact Information.....	Rear Folio



OVERVIEW



Established in 1919, the office of the Cuyahoga County Sanitary Engineer was created to provide administrative authority in matters of wastewater, storm water, and water supply management. In 2012, the Sanitary Engineering Division (formerly CCSE) became a part of the Cuyahoga County Department of Public Works, and now operates under County Executive Armond Budish.

The Division's focus is on the maintenance and repair of aging sewer lines, needs assessment, engineering feasibility studies, as well as other infrastructure-related issues, all of which have a direct impact on commercial and residential development, job creation, and expanding the tax base in the communities served by the Department of Public Works. Furthermore, the Division is a major source of technical information for mayors, municipal engineers, and service directors and provides them with guidance for making infrastructure decisions within their community. The Division has considerable experience in the maintenance, repair, and rehabilitation of sanitary and storm sewer lines, as well as significant expertise with respect to the operation and maintenance of pump stations.

The Sanitary Engineering Division of Public Works currently operates in 38 communities by agreement. Pursuant to such agreements, it maintains more than 1,200 miles of sanitary sewers and 800 miles of storm sewers, operates 56 sewage-pumping stations, and maintains two wastewater treatment plants. Working in cooperation with the Ohio Environmental Protection Agency (Ohio EPA), the Northeast Ohio Regional Sewer District (NEORS), the Cuyahoga County Board of Health, and various communities the Division works to maintain water quality through the identification and investigation of illicit discharges as well as the construction of new sanitary sewers.

All funds used for maintenance and repair of the sewers and other sewage facilities are generated through fees and assessments. The Division does not receive a subsidy from the County's general fund to perform such maintenance activities.

The Sanitary Engineering Division of the Department of Public Works has been in the forefront of regionalism efforts. With services provided to more than half of the County's 59 communities, the Division continues to maintain reasonable rates and improve infrastructure throughout the area.





GOALS

The Sanitary Division of the Department of Public Works has three (3) major goals:



1. Operate and maintain the sanitary sewerage systems to assist the communities in meeting the goals and objectives of the EPA Capacity Management Operation and Maintenance (CMOM) guidelines.
2. Provide guidelines for the design and construction through the “*Uniform Standards for Sewerage Improvements*” and the “*Rules and Regulations.*”
3. Issue sewer connection permits and provide construction inspection for new sanitary sewers and new connections to existing sanitary sewers.

The goals of the Department of Public Works with respect to the maintenance and repair of sewers are attained through the activities of our three main groups working together: Maintenance Services; Engineering & Construction Services; and, Administrative Services.

MAINTENANCE SERVICES

- Reduce the number of flooded basements by maintaining existing capacity in the collection systems, minimize the inflow/infiltration of storm water to the sanitary system, and evaluate the structural integrity of the sewerage system;
- Increase maintenance efficiency to reduce operating costs and provide more available funds for capital improvement projects and repairs;
- Operate wastewater treatment plants in compliance of National Pollution Discharge Elimination System (NPDES) permit parameters;
- Maintain and inspect the existing collection system to achieve EPA CMOM maintenance goals;
- Operate and maintain pumping stations;
- Illicit Discharge Detection and Elimination Services





ENGINEERING AND CONSTRUCTION SERVICES

- Task Order preparation for repairs and rehabilitation;
- Plan review and approval of all new sewer improvements within the County service area;
- Engineering analysis (required for operation of facilities and the collection system);
- Capital improvement planning;
- Construction management and inspection;
- Provide guidelines for new construction through use of *Uniform Standards for Sewerage Improvements*;
- Provide infrastructure needs assessment for communities;
- Project design;
- Construction inspection of new wastewater collection systems within the county service area; and,
- Record keeping, as-built plans and test tee location.



ADMINISTRATIVE SERVICES

- Issuance of connection permits;
- Issuance of sewer builders' licenses;
- Maintenance of Record Drawings;
- Geographical Information Systems (GIS) for development and implementation;
- Fiscal oversight of annual operating budget and capital improvement budget;
- Grant and loan administration; and,
- Licensing and permitting of more than 200 contractors.

SUMMARY OF COUNTY-WIDE MAINTENANCE SERVICES

▪ SEWERS

- High-pressure jetting of sewers in the right-of-way, approximately 244 miles of sewers in 2017;
- Point repairs of sewers, force mains, and structures; 3,881 construction visits
- Cleaning of service laterals, including emergency maintenance and 24-hour on-call team for resident issues;
- Televising of lines to provide condition ratings and to identify possible failures or deficiencies, approximately 212 miles of sewers;
- Inflow and Infiltration, 804 visits;
- Licensed operators to monitor the condition of the treatment plants and pumping stations, as well as implement upgrades and preventative maintenance.





The Maintenance Services section provides a full-service program to clean, provide NASSCO PACP condition ratings, maintain structural integrity, and perform repairs on sanitary and storm sewers. The objective of the program is the cleaning of all sanitary sewers every three years and performing video inspection every six years which is well within the NEORSD's "Best Management Practices" guidelines.

▪ HOUSE LATERAL SERVICES

The Division cleaned 9,694 house connections in 2017. The goal is to alleviate sewer back-ups by clearing blocked mains and cleaning service connections to restore sewer capacity.

The House Lateral Service Department performs flow monitoring for Inflow and Infiltration (I&I) analysis and performs smoke testing, dye testing and lateral sewer inspection to identify I&I sources and locations of illicit

discharges. The Department works with the communities, the Ohio EPA and the NEORSD to protect local waterways.

▪ PUMPING STATIONS

The County operates 56 pumping stations throughout the 38 communities pursuant to maintenance agreements. A Supervisory Control and Data Acquisition (SCADA) system monitors the stations. The system provides alarms and operational status through a central computer that is accessed from a remote computer providing 24-hour monitoring. New pump stations are added to the SCADA as they come on-line. Our maintenance staff consists of experienced operators and technicians enabling us to repair most problems in-house, therefore keeping costs down. Their preventive maintenance program and dedication to the job has reduced emergency call-outs and overflows.





- **WASTEWATER TREATMENT PLANTS**

The County operates two package wastewater treatment plants. The standards for each facility are set by the Ohio EPA through the National Pollution Discharge Elimination System (NPDES) permit. The support staff consists of wastewater operators licensed by the Ohio EPA who monitor the conditions of the plants and make necessary process adjustments to meet the requirements of each NPDES permit.

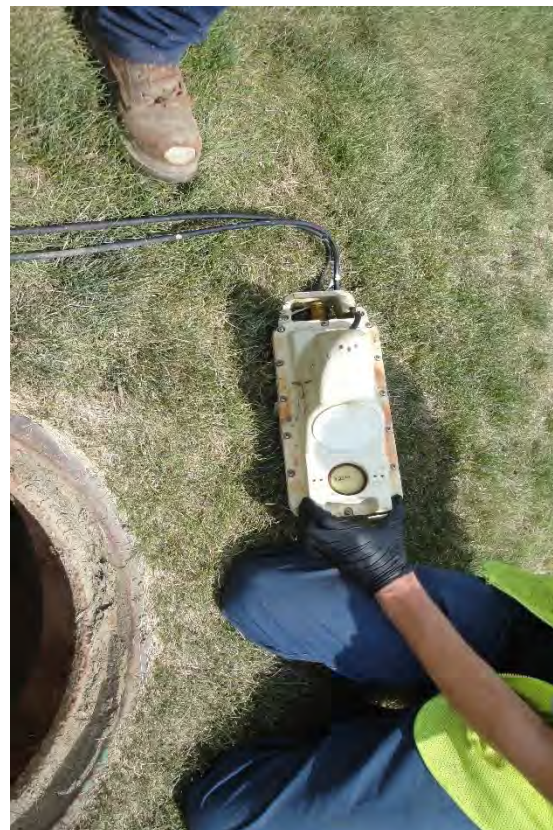


- **CAPACITY, MANAGEMENT, OPERATION, AND MAINTENANCE PROGRAM (CMOM)**

The CMOM Program is a set of “best management practices” that have been developed by the industry and are applied over the life cycle of the collection system. It is these general practices that are taken into consideration when a system is being reviewed by a federal or state agency. Improvement and recommendations are provided by the agencies based on deficiencies identified in the sanitary sewer system.



We continue to work with the NEORSR through their community discharge program and the Ohio EPA to ensure that our department’s best practices meet the CMOM goals.





SUMMARY OF ENGINEERING & CONSTRUCTION SERVICES

Engineering and construction services provides technical services to the communities including, but not limited to capital project planning, grant and loan administration, design engineering, construction management, and inspection of sanitary and storm sewers, pump stations, and wastewater treatment facilities.

A sewer repair and rehabilitation program is managed by in-house personnel supplemented with two third-party contractors. Under the existing sewer maintenance agreements, the communities issue Task Orders to the County for repair and rehabilitation based on video inspection information and requests from the communities. A specific Engineer is assigned to each community to provide an individual contact for collection system related issues.

In 2017, design plans were reviewed for nearly 50 construction projects on behalf of member communities. Engineering also coordinates and analyzes the results of field testing and flow monitoring to detect and eliminate storm water inflow/infiltration from the sanitary sewer system and illicit discharges to the storm sewer system. Record drawings are prepared, then scanned and filed for record keeping. Information on the new sewers and service connections are provided to our IT personnel for incorporation in the County's Geographical Information System (GIS).

Engineering and construction also oversee capital construction projects and develop financial packages in the form of grants and loans obtained from the state of Ohio. These funds are utilized for lining, repairing, replacing, and rehabilitating existing sanitary and storm sewerage systems.

The construction staff provides inspection for all new sanitary sewers and service laterals connecting to existing sewers. The Inspectors ensure that projects are constructed in conformance to design plans, specifications and the *"Uniform Standards."*





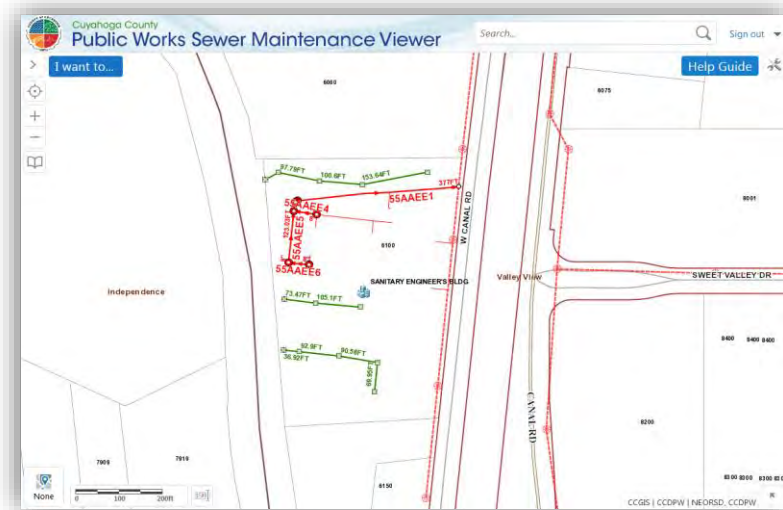
SUMMARY OF ADMINISTRATIVE SERVICES

■ PERMITS

This department operates in 38 communities pursuant to sewer maintenance agreements. Its major functions include issuance of sewer connection permits and the registration of licensed and bonded contractors able to obtain connection permits and install sanitary sewers within the member communities. The Department also maintains the permanent records for sewer construction projects and provide information to all county departments, engineering consulting firms, contractors, and the public.

■ INFORMATION TECHNOLOGY

Information Technology (IT) provides computer and analytical support to internal end-users and communities serviced by the Department of Public Works. It is responsible for the design, implementation and maintenance of our Geographical Information System (GIS) and other relational database systems, as well as guiding data acquisition tasks throughout the Department. The GIS mapping program catalogues the location of sewer systems and performs analysis on spatial data. This ability supports the planning, design, and maintenance of sewer systems, and ensures user fees are appropriately assessed and collected. Furthermore, the mapping program now features attached permits.



Our Geographical Information System is continually being updated and expanded to include information on repair and rehabilitation activities as well as system maintenance and inspection activities. Information is shared between the County, member communities, and the NEORSD to improve services and foster collaboration.

■ FINANCE

Finance provides support services to various units within the Department of Public Works. Automated cost accounting programs and systems ensure accurate tracking and monitoring of expenditures, revenues, rate structures and other data that provide financing for capital projects and operational budgets. All systems and programs are operated under generally accepted accounting principles. Public Works oversees an annual storm and sanitary sewer operating budget of more than \$18 million. Finance is responsible for accounts receivable, accounts payable, cost accounting, audit, inventory control, capital project financing, purchasing, and sewer assessment revenue management for member communities.

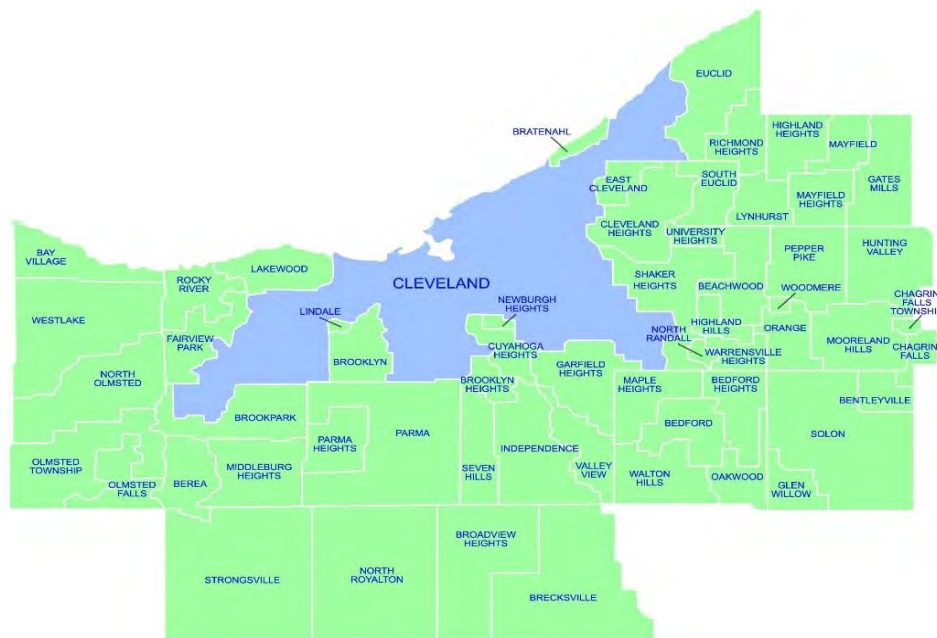


APPENDIX DESCRIPTION*

The following appendices contain a variety of reports representing the services provided to communities in 2017. The Public Works Department follows a manhole-to-manhole, sewer segment-based accounting method for jet cleaning and TV (video) inspection maintenance services. The first two reports contain listings of the collection system cleaned and inspected for the year by street. The following report discloses the more significant projects submitted and reviewed by the Permit and Engineering & Construction Departments during the year for your community. Smaller review services such as house connections or ongoing, intermittent review of large multi-phase projects spanning several years of development are not shown on this report. The final appendices provide a breakdown of services including house visits, inflow/infiltration studies, and construction activity, operating expenses, and capital project costs contracted for the community.

A map showing areas where collection system mainlines were jet cleaned and TV inspected, construction crew activity locations, house visits and if house lateral connections needed to be cleaned or inspected is available on our website at <http://publicworks.cuyahogacounty.us/en-US/Sewer-Maintenance-Services.aspx>. Adobe Corporation's free reader software is required and can be downloaded from www.adobe.com.

* **Please note:** These appendix reports are provided only to communities for which the specific service is provided by the Department of Public Works. For example, if regularly scheduled mainline cleaning service is not provided for your community, a map was not produced. Similarly, if project review or capital project management services are not provided to your community, then there is no corresponding report. Certain communities are provided limited maintenance on county improvement mainlines and/or facilities only.



SANITARY FLEET FACTS

THE POWER OF REGIONALISM



Current vehicles & equipment	Quantity
House Trucks	12
Specialized Plate Truck & specialized vehicles for catch basin repair	5
Combination Jet-Vac & Straight Jet Trucks	12
TV Camera Trucks	7
Backhoes, Mini Excavators & Rubber Wheel Loader	10
Class 5 Dump Trucks	3
Construction trucks	7
1 ton trucks for pump station service	5
43,000 to 53,000 GVWR single-axle dump trucks	3
58,000 to 60,000 GVRW tandem axle dump trucks	8
Class 550 with crane for pump station service	2
20-25 ton trailers	10
Small Trailers	12





Community Streets Cleaned*



Section A-1

*No service provided if section is blank

Collection System Jet Cleaning

MAYFIELD HEIGHTS

STREET		NUMBER OF SEGMENTS	JET FT
TYPE	SANITARY	Street Count 19	
	BELROSE ROAD	14	4,235
	BONNIE LANE	9	2,305
	BONNIE PLACE	2	321
	COMMONWEALTH AVENUE	9	2,694
	EAST MINER ROAD	15	4,690
	EASTWOOD AVENUE	13	3,923
	GENESEE AVENUE	13	3,913
	GIESSE DRIVE	8	2,206
	GOLDEN GATE BOULEVARD	22	4,189
	JACKIE LANE	11	2,360
	MAYFIELD RIDGE ROAD	14	3,858
	ORCHARD HEIGHTS DRIVE	13	3,691
	RANCLAND DRIVE	13	3,726
	SOM CENTER ROAD	1	17
	SUMMIT DRIVE	13	3,649
	SUNSET ROAD	12	3,706
	WASHINGTON BOULEVARD	10	3,391
	WEST MINER ROAD	11	2,965
	WORTON BOULEVARD	12	3,630
	Total:	215	59,469

TYPE	STORM	Street Count 20	
	BELROSE ROAD	1	362
	CEDAR ROAD	1	300
	EAST MINER ROAD	2	700
	EASTWOOD AVENUE	15	4,543
	EDGEWOOD ROAD	2	437
	ELMWOOD ROAD	16	5,163
	GENESEE AVENUE	1	313
	IROQUOIS AVENUE	5	1,552
	LANDERBROOK DRIVE	1	300
	LONGWOOD ROAD	1	350
	MAPLEWOOD ROAD	1	250
	MAYFIELD RIDGE ROAD	14	3,873
	OAKVILLE ROAD	1	251
	ORCHARD HEIGHTS DRIVE	1	312

Collection System Jet Cleaning

MAYFIELD HEIGHTS

STREET	NUMBER OF SEGMENTS	JET FT
RANGLAND DRIVE	13	3,999
RIDGEBURY BOULEVARD	1	205
SUMMIT DRIVE	14	4,128
SUNSET ROAD	20	6,142
WASHINGTON BOULEVARD	9	2,851
WEST MINER ROAD	2	625

Total: 121 36,656

Annual Report Jet Cleaning

Grand Total: 336 96,125



Community Streets Inspected*



Section A-2

*No service provided if section is blank

Collection System TV Inspection

MAYFIELD HEIGHTS

	STREET	NUMBER OF SEGMENTS	TV FT
TYPE	SANITARY	Street Count 22	
	BEHAM DRIVE	1	304
	BELROSE ROAD	14	4,074
	BONNIE LANE	11	2,636
	BONNIE PLACE	2	229
	COMMONWEALTH AVENUE	12	3,466
	EAST MINER ROAD	12	3,339
	EASTWOOD AVENUE	13	3,761
	GENESEE AVENUE	11	2,145
	GIESSE DRIVE	8	2,222
	IROQUOIS AVENUE	12	3,402
	JACKIE LANE	16	2,774
	MAYFIELD RIDGE ROAD	4	864
	MAYFIELD ROAD	1	196
	ORCHARD HEIGHTS DRIVE	11	3,148
	RANCLAND DRIVE	12	3,671
	RIDGEBURY BOULEVARD	3	713
	RIDGEVIEW ROAD	1	305
	SUMMIT DRIVE	12	3,617
	SUNSET ROAD	5	1,492
	WASHINGTON BOULEVARD	2	622
	WEST MINER ROAD	10	2,866
WORTON BOULEVARD	11	2,866	
	Total:	184	48,712

TYPE	STORM	Street Count 23	
	CEDAR ROAD	1	290
	COMMONWEALTH AVENUE	8	2,509
	EAST MINER ROAD	10	2,955
	EASTWOOD AVENUE	12	3,135
	ELMWOOD ROAD	10	3,003
	ENFIELD DRIVE	3	807
	GENESEE AVENUE	3	877
	IROQUOIS AVENUE	13	4,246
	LARCHMONT DRIVE	4	1,081
	LONGRIDGE ROAD	6	410
	MAYFIELD RIDGE ROAD	15	3,747

Collection System TV Inspection

MAYFIELD HEIGHTS

STREET	NUMBER OF SEGMENTS	TV FT
MAYFIELD ROAD	1	177
PARKER DRIVE	4	896
RANCLAND DRIVE	10	2,914
RIDGEBURY BOULEVARD	1	206
RIDGEVIEW ROAD	2	659
STAFFORD DRIVE	2	614
SUMMIT DRIVE	12	3,698
SUNSET ROAD	12	3,694
WASHINGTON BOULEVARD	14	3,889
WEST MINER ROAD	10	2,650
WINDSOR CIRCLE	1	61
WINDSOR DRIVE	7	940

Total:	161	43,458
---------------	-----	--------

Annual Report TV Inspection

Grand Total:	345	92,170
---------------------	-----	--------



Project Review Status*



Section A-3

*No service provided if section is blank

Service Program Summary*



Section A-4

*No service provided if section is blank

City of Mayfield Heights

<u>Type</u>	<u>Community Total</u>
Sanitary Sewers	249,591 Feet
Manholes	1,099 (Approximately)

2017 Service Program

<u>Program</u>	<u>2017 Activity</u>
1) High Pressure Jet Cleaning Sanitary - 59,469 Feet Storm - 36,656 Feet	96,125 Feet
2) House Service	643 Calls
3) Television Inspection Sanitary - 48,712 Feet Storm - 43,458 Feet	92,170 Feet
4) Construction Activities	134 Job(s)
5) Smoke and Dye Testing	- Test(s)
6) Construction Permits Issued (Commercial) (Residential)	- 11
7) Plan Review	- Plan(s)
8) Construction Inspection a) Main Lines Inspected b) Service Laterals & Sewer Sites Inspected	11 Feet 2,484 Feet
9) Catch Basins Cleaned	54

Community Operating Expenses*



Section A-5

*No service provided if section is blank

City of Mayfield Heights
2017 Operating Expenses

<u>Activity</u>	<u>Cost</u>
1. Maintenance of Sanitary Sewerage Systems	\$716,615
2. Pump Station Operation and Maintenance	\$23,190
3. Waste Water Treatment Plant Maintenance	\$ 0
4. Engineering and/or Inspection	\$22,413
5. Capital Expenses (See Section A-6 if any)	\$26,741
 Total Operating Expenses:	 \$788,959

Community Capital Expenses*



Section A-6

*No service provided if section is blank

City of Mayfield Heights

2017 Capital Expenses

Mayfield Road Repair	\$ 8,521
Giesse Drive Repair	\$ 17,257
Giesse Drive Lining	\$ 963

Total Capital Expenses: \$ 26,741

CONTACT INFORMATION

Cuyahoga County Department of Public Works
6100 West Canal Road
Valley View, OH 44125

Email: Publicworks@cuyahogacounty.us

Website: Publicworks.cuyahogacounty.us

Michael W. Dever, MPA	Director of Public Works
David E. Marquard, P.E.,P.S	Design & Construction Administrator
Michael W. Chambers, CPA	Finance & Operations Administrator
Bryan J. Hitch	Sewer Maintenance Superintendent
Hugh Blocksidge P.E.	Chief Engineer Sanitary Design



Department of Public Works Administrative Headquarters
2079 East Ninth Street- 5th Floor
Cleveland, Ohio 44115

Dispatch Office.....	(216) 443-8201
Dispatch Email.....	PWDispatch@cuyahogacounty.us
Administration.....	(216) 348-3867
Inspection & Permits.....	(216) 443-8211
Sewer Maintenance.....	Gary Green, Senior Supervisor(216) 443-8225
Lateral Services.....	Suzanne Britt, Supervisor(216) 443-3553
Construction (EAST).....	Mitch Holt, Supervisor(216) 443-8229
Construction (WEST).....	John Gribble, Supervisor(216) 443-8227
Sewer Jetting.....	Guy Swindell, Supervisor(216) 443-8226
Televised Inspection.....	Todd Swindell, Supervisor(216) 443-8224
Pump Station Operations.....	William Applegarth, Supervisor(216) 443-8295
Sewer Maintenance.....	Dave Novak, 2nd Shift Supervisor(216) 348-4238
Sewer Maintenance.....	Patrick Mauk, 2nd Shift Supervisor(216) 348-3849
Sewer Maintenance.....	Tom Noy, 2nd Shift Supervisor(216) 348-3901

Cuyahoga County Department of Public Works

2079 East Ninth Street | Cleveland, OH 44115 | 216.348.3800



Cuyahoga County
Together We Thrive