



Cuyahoga County
Together We Thrive

2021 Annual Report

Prepared
for the:

City of Parma



By the: **Department of Public Works**





March 21, 2022

The Honorable Timothy DeGeeter
City of Parma
6611 Ridge Road
Parma, Ohio, 44129

Dear Mayor DeGeeter,

As the Director of Public Works, I am pleased to submit the 2021 Annual Report for the City of Parma. Our work within the communities, including yours, focuses on addressing infrastructure needs and meeting Ohio EPA goals for collection system operation and maintenance. We continue to provide efficiency for sanitary and storm sewer maintenance throughout the County by maintaining a second shift to enable us to reduce overtime and to work in areas where normal working hour traffic is problematic. Our goal is always to provide a high level of service in a cost-effective manner.

The Covid-19 Pandemic has affected our Public Works Department as it has affected all communities in Cuyahoga County. Through the work of our dedicated staff members, we have been able to continue to provide reliable maintenance services throughout our service area during this difficult time and we will continue to provide quality service for our member communities throughout the year.

This annual report contains a detailed overview of the work completed within your municipality in the past year. The overview of the work performed includes the following: collection system jet cleaning and TV inspection history, plan approval status, service program summary details and community operating and capital expenses.

The annual report for this and previous years is also available on our website at

<https://cuyahogacounty.us/publicworks/services/sewer-maintenance-services>

The Rules and Regulations and Uniform Standards and Details issued by the County continue to be available on our web site:

<https://www.cuyahogacounty.us/publicworks/services/design-and-construction/sanitary-design/sanitary-design-construction-drawings-and-standards>

My staff is available to meet with you at your convenience should you wish to discuss this report or any of the services that our department provides. I am pleased and grateful for the opportunity of serving you through the Cuyahoga County Department of Public Works.

Respectfully submitted,

Michael W. Dever, MPA, Director
Department of Public Works

cc: (with attachments)

Brian Higgins, Service Director
Hasmukh Patel, P.E, Engineer



The Power of Consolidation

2501 Harvard Avenue – Newburgh Heights

Sanitary Engineering, Road & Bridge & Fleet Management are consolidated at one location



The Harvard Avenue Maintenance Yard facility is home to approximately 180 staff members and is geographically centralized in Cuyahoga County to better serve the surrounding communities.

- ADA-compliant design for all Office, Conference , and Training Room areas
- Conference and Training Rooms for up to 200 visitors
- Fleet Maintenance Area features: 9 static lifts and 3 mobile lifts
- Vehicle fueling areas for both Diesel and Gasoline
- Interior Vehicle Wash Bay
- LED Lighting for Interior Office, Garage, Exterior Parking Lot and Site Lighting
- Materials Storage Yard
- Dispatch Area
- Permits Area





SANITARY FLEET FACTS

THE POWER OF REGIONALISM



Current vehicles & equipment	Quantity
House Trucks	13
Specialized Plate Truck & specialized vehicles for catch basin repair	7
Combination Jet-Vac & Straight Jet Trucks	12
TV Camera Trucks	7
Backhoes, Mini Excavators & Rubber Wheel Loader	7
Class 5 Dump Trucks	6
Construction trucks	8
1-ton trucks for pump station service	5
43,000 to 53,000 GVWR single-axle dump trucks	6
58,000 to 60,000 GVRW tandem axle dump trucks	9
Class 550 with crane for pump station service	3
20-25 ton trailers	11
Small Trailers	13



Table of Contents



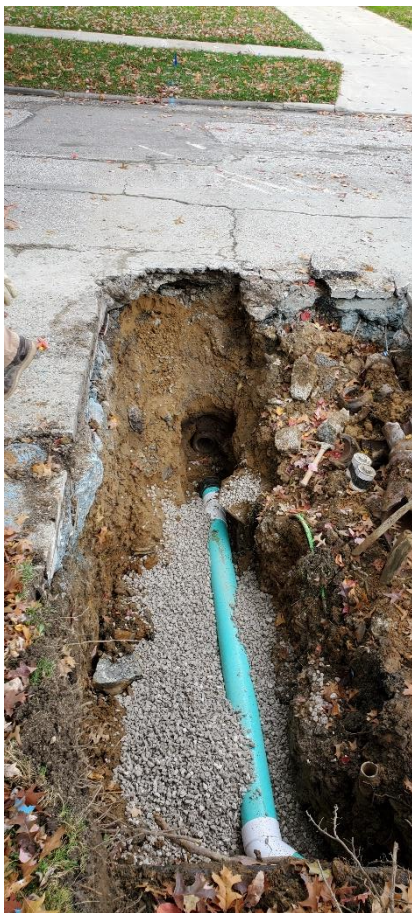
Overview.....	1
Appendix Description.....	8
Community Streets Cleaned.....	A-1
Community Streets Televised.....	A-2
Plan Approval Status.....	A-3
Service Report Summary.....	A-4
Community Operating Expenses.....	A-5
Community Capital Expenses.....	A-6
Contact Information.....	Rear Folio



OVERVIEW

Established in 1919, the office of the Cuyahoga County Sanitary Engineer was created to provide administrative authority in matters of wastewater, storm water, and water supply management. In 2012, the Sanitary Engineering Division (formerly CCSE) became a part of the Cuyahoga County Department of Public Works (CCDPW), and now operates under County Executive Armond Budish.

The Sanitary Division's focus is on the maintenance and repair of aging sewer lines, sewer system needs assessment, engineering feasibility studies, and other infrastructure-related issues. These areas all have a direct impact on commercial and residential development, job creation, and expanding the tax base in the communities served by the Department of Public Works. Furthermore, the Sanitary Division is a major source of technical information for communities (mayors, municipal engineers, and service directors), which provides them with guidance for making infrastructure decisions within their community. The Sanitary Division has considerable experience in the maintenance, repair, and rehabilitation of sanitary and storm sewer systems, as well as significant expertise with respect to the operation and maintenance of pump stations and wastewater treatment plants.



The Sanitary Engineering Division of Public Works currently operates in 38 communities by agreement. Pursuant to such agreements, the Sanitary Division maintains more than 1,500 miles of sanitary sewers and 1,100 miles of storm sewers, operates 65 sewage-pumping stations, and maintains one wastewater treatment plant. Working in cooperation with the Ohio Environmental Protection Agency (Ohio EPA), the Northeast Ohio Regional Sewer District (NEORS), the Cuyahoga County Board of Health (CCBH), and the various communities, the Sanitary Division works to maintain water quality. This is done through the construction of new sanitary sewers, maintenance of existing sewer systems, and the investigation and remediation of illicit discharges (sanitary sewage which is improperly discharged into storm sewers).

All funds used for operation, maintenance, rehabilitation, and repair of the sewerage system are generated through fees and assessments. (Funding is not via the County's General Fund to perform these activities.)

The Department of Public Works has been in the forefront of regionalism efforts within the County. With services provided to more than half of the County's 59 communities, the Sanitary Division continues to maintain reasonable rates and improve infrastructure throughout the area.



GOALS

The Sanitary Engineering Division of Public Works has three (3) major goals:



1. Operate and maintain the sanitary sewerage systems to assist the communities in meeting the goals and objectives of the EPA Capacity Management Operation and Maintenance (CMOM) guidelines.
2. Provide guidelines for design and construction through the County's *"Uniform Standards for Sewerage Improvements"* and *"Rules and Regulations."*
3. Issue sewer connection permits and provide construction inspection for new sanitary sewers and new connections to existing sanitary sewers.

The goals of the Sanitary Engineering Division with respect to the maintenance and repair of sewers are accomplished through the activities of our three main Sanitary Division groups working together: Maintenance Services; Engineering & Construction Services; and Administrative Services.

MAINTENANCE SERVICES

- Reduction of the number of flooded basements by maintaining existing capacity in the collection systems, minimize the inflow/infiltration of storm water to the sanitary system, and evaluate the structural integrity of the sewerage system;
- Optimization of maintenance efficiency to reduce operating costs and provide more available funds for capital improvement projects and repairs;
- Operation of wastewater treatment plants in compliance with the National Pollution Discharge Elimination System (NPDES) permit parameters;
- Maintenance and inspection of the existing collection system to achieve EPA CMOM maintenance goals;
- Operation and maintenance of pumping stations;
- Performance of Illicit Discharge Detection and Elimination Services





ENGINEERING AND CONSTRUCTION SERVICES

- Preparation of Task Orders for repairs and rehabilitation;
- Plan review and approval of all new sewer improvements within the County service area;
- Performance of engineering analyses (required for operation of facilities and the collection system);
- Capital improvement planning;
- Construction management and inspection;
- Provision of guidelines for new construction through use of the CCDPW *Uniform Standards for Sewerage Improvements*;
- Provision of infrastructure needs assessment for communities;
- Project design;
- Construction inspection of new wastewater collection systems within the county service area; and,
- Record keeping of as-built plans and test tee locations.



ADMINISTRATIVE SERVICES

- Issuance of connection permits;
- Maintenance of Record Drawings;
- Provision of Geographical Information Systems (GIS) for development and implementation;
- Fiscal oversight of annual operating budget and capital improvement budget;
- Administration of Grants and loans; and,
- Licensing and permitting of more than 200 contractors.

SUMMARY OF COUNTY-WIDE MAINTENANCE SERVICES

- **SEWERS**
 - High-pressure jetting of sewers in the right-of-way, approximately 317 miles of sewers in 2021;
 - Point repairs of sewers, force mains, and structures; 2,848 construction visits; and 1,066 catch basins cleaned;
 - Cleaning of 8,321 service laterals, including emergency maintenance and 24-hour on-call team for resident issues;
 - TV inspection of approximately 248 miles of sewers to provide condition ratings, failures and/or deficiencies;
 - I/I investigation and remediation, 341 visits;
 - Implementation of preventative maintenance and upgrades to treatment plants and pumping stations, as well as the provision of licensed operators to monitor the condition of those facilities.





The Maintenance Services Department provides a full-service program to clean sewers, provide National Association of Sewer Service Companies (NASSCO) Pipeline Assessment Certification Program (PACP) condition ratings of sewers, maintain the structural integrity of the sewer systems, and perform repairs on sanitary and storm sewers. The objective of the program is the cleaning of all sanitary sewers every three years and performing video inspection every six years. This timeline is well within the NEORSD's "Best Management Practices" guidelines.

▪ HOUSE LATERAL SERVICES

The Maintenance Services House Lateral Service Department cleaned 8,321 house connections in 2021. The goal is to alleviate sewer back-ups by clearing blocked mains and cleaning service connections to restore sewer capacity.

The House Lateral Service Department also performs flow monitoring for Inflow and Infiltration (I&I) analysis, dye testing, smoke testing, and lateral sewer inspection to identify I&I sources and locations of illicit discharges. The Department works with the communities, the Ohio EPA and the NEORSD to protect local waterways.

▪ PUMPING STATIONS

The County operates 65 pumping stations throughout the 38 communities pursuant to the maintenance agreements. A Supervisory Control and Data Acquisition (SCADA) system monitors the stations. The system provides alarms and operational status through a central computer, providing 24-hour monitoring. New pump stations are added to the SCADA system as they come on-line. Our maintenance staff consists of experienced operators and technicians enabling us to repair most problems in-house, therefore keeping costs down. Their preventive maintenance program and dedication to the job has reduced emergency callouts and overflows.





■ **WASTEWATER TREATMENT PLANT**

The County operates one package wastewater treatment plant. The standards are set by the Ohio EPA through a National Pollution Discharge Elimination System (NPDES) permit. The support staff consists of wastewater operators, licensed by the Ohio EPA, who monitor the conditions of the plant and make necessary process adjustments to meet the requirements of the NPDES permit.



■ **CAPACITY, MANAGEMENT, OPERATION, AND MAINTENANCE PROGRAM (CMOM)**

The CMOM Program is a set of “best management practices” that have been developed by the industry and are applied over the life cycle of the sewer collection system. It is these general practices that are taken into consideration when a system is being reviewed by a federal or state agency. Improvement and recommendations are provided by the agencies based on deficiencies identified in the sanitary sewer system.

We continue to work with the NEORS (through their community discharge program) and with the Ohio EPA to ensure that our Sanitary Division’s best practices meet the CMOM goals.





SUMMARY OF ENGINEERING & CONSTRUCTION SERVICES

The Engineering and Construction Services Departments provide technical services to the communities including, but not limited to, capital project planning, grant and loan administration, design engineering, construction management, as well as inspection of sanitary and storm sewers, pump stations, and wastewater treatment facilities.

The sewer repair and rehabilitation program is managed by in-house personnel. A Sanitary Division engineer is assigned to each community to provide an individual contact for sewer related issues. Under the existing sewer maintenance agreements (based on video inspection information and requests from the communities), the County issues Task Orders for repair and rehabilitation by our personnel, supplemented by three third-party contractors.

In 2021, on behalf of member communities, design plans were reviewed for nearly 50 construction projects. The Sanitary Engineering Division also coordinates and analyzes the results of field testing and flow monitoring to detect and eliminate storm water inflow/infiltration (I/I) from the sanitary sewer system and illicit discharges to the storm sewer system. Record drawings are prepared, scanned, and filed for record keeping. Information on new sewers and service connections are provided to our IT personnel for incorporation into the County's Geographical Information System (GIS).

The Sanitary Engineering Division and the Construction Department also oversee capital construction projects, including the development of financial packages in the form of grants and loans obtained from the State of Ohio. These funds are utilized for lining, repairing, replacing, and rehabilitating existing sanitary and storm sewerage systems.

The Construction staff provides inspection of all new sanitary sewers and for the connection of service laterals to existing sewers. The Inspectors ensure that projects are constructed in conformance to design plans, specifications, and the County's *"Uniform Standards."*





SUMMARY OF ADMINISTRATIVE SERVICES

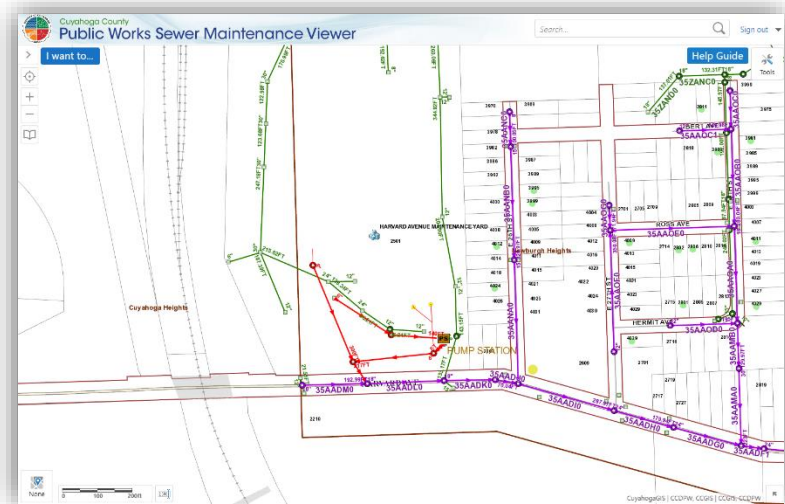
■ PERMITS

The County issues residential and commercial sewer service connection permits for 38 communities. Only contractors registered with the Department of Public Works can obtain a permit. The permit process includes inspection by the County to ensure that the work is performed in conformance to the “Uniform Standards and Details”. Permanent records of all sewer connections are maintained by the County.

■ INFORMATION TECHNOLOGY

Information Technology (IT) provides computer and analytical support to internal end-users and to the communities serviced by the CCDPW. IT is responsible for the design, implementation, and maintenance of our Geographical Information System (GIS), other relational database systems, and guiding data acquisition tasks throughout the CCDPW. The GIS mapping program catalogues the location of sewer systems and performs analysis on spatial data. This information supports the planning, design, and maintenance of sewer systems, and ensures user fees are appropriately assessed and collected. Furthermore, the mapping program features access to information regarding permits that are on record.

Our Geographical Information System is continually being updated and expanded to include information on repair and rehabilitation activities as well as system maintenance and inspection activities. Information is shared between the County, member communities, and the NEORSRD to improve services and foster collaboration.



■ FINANCE

The Finance Department provides support services to various units within the CCDPW. Automated cost accounting programs and systems ensure accurate tracking and monitoring of expenditures, revenues, rate structures, and other data that provide financing for capital projects and operational budgets. All systems and programs are operated under generally accepted accounting principles. The CCDPW oversees an annual storm and sanitary sewer operating budget of more than \$25 million. Finance is responsible for accounts receivable, accounts payable, cost accounting, audit, inventory control, capital project financing, purchasing, and sewer assessment revenue management for member communities.

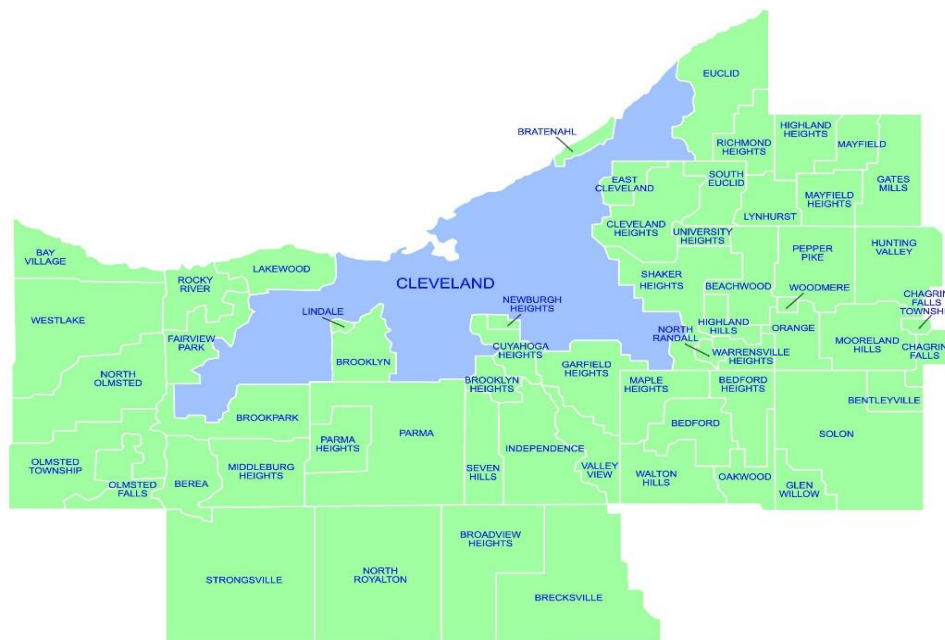


Appendix Description*

The following appendices contain a variety of reports representing the services provided to member communities in 2021. The CCDPW follows a manhole-to-manhole, sewer segment-based accounting method for jet cleaning and TV (video) inspection maintenance services. The first two appendices contain listings of the collection system cleaned and inspected for the year by street. The next appendix lists the plan approvals for the more significant projects submitted to, reviewed, and approved by the Engineering Department during the year for your community. Smaller review services such as house connections or ongoing, intermittent review of large multi-phase projects spanning several years of development are not shown on this report. The final appendices provide a breakdown of services including house visits, inflow/infiltration studies, construction activity, operating expenses, and capital project costs contracted for the community.

This annual report, along with a map showing areas where collection system mainlines were jet cleaned and TV inspected, locations where construction crew activities were provided, house visits where house lateral connections needed to be cleaned or inspected, is available on our website at <https://cuyahogacounty.us/publicworks/services/sewer-maintenance-services>. Adobe Corporation's free reader software is required and can be downloaded from www.adobe.com.

*** Please note:** These appendix reports are provided only to communities for which specific services are provided by the CCDPW. For example, if regularly scheduled mainline cleaning service is not provided for your community, a map was not produced. Similarly, if project review or capital project management services are not provided for your community, then there is also no corresponding report. Furthermore, certain specific member communities are provided limited maintenance only on County improvement mainlines and/or facilities.



Community Streets Cleaned*



Section A-1

*No service provided if section is blank

2021 Collection System Jet Cleaning

PARMA

SANITARY

Street Count: 117

STREET	Jet footage	# of segments
ACKLEY EASEMENT	315	1
ACKLEY ROAD	5,308	21
ALBER AVENUE	1,196	4
ALBERTLY AVENUE	3,767	13
ALLANWOOD ROAD	1,680	2
AMHERST DRIVE	570	1
ARROW LANE	0	7
BELMERE DRIVE	2,628	11
BOWMEN LANE	0	12
BRADENTON BOULEVARD	1,201	6
BROADROCK COURT	440	1
BROOKPARK ROAD	1,089	4
BROWNFIELD DRIVE	3,245	12
BUCKINGHAM DRIVE	533	3
CENTER DRIVE	296	1
CHARLES AVENUE	543	2
CHESTNUT HILLS DRIVE	209	1
CHEVROLET BOULEVARD	40	1
COMMONWEALTH DRIVE	1,194	4
COVENTRY DRIVE	0	3
DARTWORTH DRIVE	541	2
DAWNSHIRE DRIVE	3,429	12
DEERFIELD DRIVE	871	3
DELLWOOD DRIVE	60	1
DONCASTER AVENUE	506	3
FARNSWORTH DRIVE	2,535	9
FERNHILL AVENUE	0	1
FORDHAM DRIVE	739	4
FORESTWOOD DRIVE	2,514	12
FRIAR DRIVE	1,610	6
GABRIELLA DRIVE	0	1
GEORGE AVENUE	1,793	6
GERALD AVENUE	3,863	11
GETTYSBURG DRIVE	241	1
GOEBEL DRIVE	458	3
GRANTWOOD DRIVE	3,193	12

SANITARY- continued

STREET	Jet footage	# of segments
GRANTWOOD EASEMENT	324	1
GROVEWOOD AVENUE	675	2
HAMPSTEAD AVENUE	869	3
HAUSERMAN ROAD	0	1
HAVERHILL AVENUE	1,300	5
HEARTHSTONE ROAD	258	2
HERESFORD DRIVE	1,450	5
HILLSDALE AVENUE	1,094	4
HOLLYWOOD DRIVE	2,158	10
HUFFMAN ROAD	303	1
INGLESIDE DRIVE	3,224	10
IVANDALE DRIVE	1,423	5
JAMESON AVENUE	1,460	6
JEANNE DRIVE	3,885	14
JOHNSON DRIVE	910	4
KENTON AVENUE	1,278	6
KERNEYWOOD ROAD	686	4
LANYARD DRIVE	961	3
LINCOLN EASEMENT	247	1
LONGWOOD AVENUE	4,964	16
LONGWOOD EASEMENT	590	2
LOYOLA DRIVE	775	4
MANCHESTER ROAD	1,905	8
MANORFORD DRIVE	1,384	5
MAPLECREST AVENUE	7,215	28
MARIETTA AVENUE	800	3
MARIONCLIFF DRIVE	944	3
MAYSDAY AVENUE	363	2
NORTH AVENUE	1,341	5
NOTTINGHAM DRIVE	0	1
OVERLOOK ROAD	638	4
OXFORD DRIVE	1,613	5
PARK DRIVE	0	1
PARKLANE DRIVE	1,125	4
PARKLEIGH DRIVE	613	2
PARMAVIEW LANE	570	1
PARMENTER DRIVE	2,075	4
PELHAM DRIVE	5,605	21
PERSHING AVENUE	645	2

SANITARY- continued

STREET	Jet footage	# of segments
REDFERN ROAD	2,786	12
RENWOOD DRIVE	7,492	28
RIDGE ROAD	2,089	16
RIDGEWOOD AVENUE	87	2
ROYCROFT DRIVE	356	1
RUSSELL AVENUE	837	3
SANFORD DRIVE	295	2
SHERATON DRIVE	3,083	12
SHERIDAN DRIVE	342	1
SHERMAN DRIVE	200	1
SNOW ROAD	6,461	23
SOUTH CANTERBURY ROAD	948	4
SOUTH EASEMENT	455	2
SOUTH PARK BOULEVARD	275	2
SOUTHINGTON DRIVE	5,524	19
SPRING GARDEN ROAD	579	2
STANBURY ROAD	955	3
STATE ROAD	3,140	15
SUNDERLAND DRIVE	3,682	12
TERRACE COURT	557	3
THORNCLIFF BOUEVARD EASEMENT	365	2
THORNCLIFFE BOULEVARD	1,223	10
THORNTON DRIVE	5,384	22
TWIN LAKES DRIVE	1,339	6
WAINSTEAD DRIVE	1,750	5
WALTER AVENUE	1,042	3
WARD ROAD	0	1
WAREHAM ROAD	1,743	7
WELLINGTON AVENUE	3,336	12
WEST 48 STREET	293	1
WEST 54 STREET	5,370	27
WEST 60 STREET	1,966	6
WEST LINDEN LANE	180	1
WEST SPRAGUE ROAD	0	1
WESTMINSTER DRIVE	2,429	11
WEXFORD AVENUE	1,380	4
WHIPPOORWILL LANE	366	2
WHITEHAVEN DRIVE	2,082	7
WHITTINGTON DRIVE	1,007	4
WOODROW AVENUE	8,641	34

SANITARY- continued

STREET	Jet Footage	# of segments
YORKSHIRE AVENUE	2,410	8
YORKSHIRE EASEMENT	271	1
JET SANITARY TOTAL:		184,997
		743

STORM

Street Count: 118

STREET	Jet Footage	# of segments
ACKLEY ROAD	2,016	9
AMES ROAD	327	2
ARCADIA DRIVE	726	6
BERTHA AVENUE	2,419	9
BISCAYNE BOULEVARD	2,394	14
BONNY BOULEVARD	1,264	10
BRIAN DRIVE	1,828	12
BROADVIEW ROAD	3,219	16
BRUENING DRIVE	696	3
BUCKINGHAM DRIVE	270	3
BURDEN DRIVE	790	5
CECELIA DRIVE	1,784	13
CHESTNUT HILLS DRIVE	1,888	8
CONCORD DRIVE	3,733	23
COVINGTON AVENUE	1,066	5
DARTWORTH DRIVE	1,890	8
DAVID AVENUE	2,600	16
DAY DRIVE	4,939	25
DAYTONA DRIVE	1,330	5
DEERFIELD DRIVE	2,179	9
DONCASTER AVENUE	514	3
DOROTHY AVENUE	2,124	8
ESSEN AVENUE	2,320	7
FLEGER DRIVE	1,329	7
FOREST HILLS BOULEVARD	727	5
FRIAR DRIVE	1,834	7
FRUITLAND DRIVE	1,515	6
GERALD AVENUE	3,231	2
GRANTWOOD DRIVE	240	1
GREEN ACRES DRIVE	3,428	23
GREEN VALLEY DRIVE	854	4
GREENWOOD DRIVE	332	4
HAUSERMAN ROAD	192	1
HILLCREST LANE	474	3

STORM - continued

STREET	Jet Footage	# of segments
HOERTZ ROAD	3,351	15
HOLBURN ROAD	1,414	7
HOLLYWOOD DRIVE	2,062	5
HOPEHAVEN DRIVE	1,436	8
HOWARD STREET	302	3
INGLESIDE DRIVE	1,777	3
IVANDALE DRIVE	1,772	6
JACQUELINE DRIVE	3,139	18
JAMESON AVENUE	1,460	2
JEANNE DRIVE	789	3
JILL DRIVE	422	2
JOANN DRIVE	1,281	10
JOHNSON DRIVE	1,962	3
JUDY DRIVE	1,545	9
KELTONSHIRE ROAD	671	3
KENTOM AVENUE	1,368	14
KERNEYWOOD ROAD	793	4
KEY WEST DRIVE	969	5
LALEMANT DRIVE	1,651	7
LANYARD DRIVE	2,077	9
LAURENT DRIVE	1,942	10
LONGWOOD AVENUE	1,405	4
LYNETTE DRIVE	953	4
MANORFORD DRIVE	1,005	5
MAPLECREST AVENUE	329	2
MONMOUTH ROAD	746	3
NELSON DRIVE	1,126	6
NEWCOMB DRIVE	2,234	16
ORCHARD PARK DRIVE	885	5
ORCHARDVIEW ROAD	823	4
ORLANDO DRIVE	971	4
OXFORD DRIVE	1,050	4
PARMAVIEW LANE	380	1
PARMENTER DRIVE	1,346	6
PELHAM DRIVE	3,079	15
PLEASANT VALLEY ROAD	2,837	16
POWERS BOULEVARD	2,723	18
RALSTON DRIVE	681	4
RAVENWOODS DRIVE	1,715	9
REGENCY DRIVE	3,617	21

STORM - continued

STREET	Jet Footage	# of segments
RENWOOD DRIVE	2,266	10
RIDGE ROAD	6,807	37
RIDGEWOOD DRIVE	3,529	53
RIDGEWOOD LAKES DRIVE	1,570	8
ROBERT STREET	1,166	8
ROYAL RIDGE DRIVE	2,252	9
SALISBURY DRIVE	1,073	6
SANFORD DRIVE	0	1
SELWICK DRIVE	2,405	11
SNOW ROAD	2,125	19
SOUTH CANTERBURY ROAD	2,234	9
SOUTH PARK BOULEVARD	0	1
SOUTHINGTON DRIVE	1,249	7
SPRING GARDEN ROAD	1,984	7
STANBURY ROAD	3,278	16
STATE ROAD	370	4
STRATFORD DRIVE	1,300	7
SUN VISTA DRIVE	311	1
TAMIAMI DRIVE	792	4
TERRACE COURT	399	3
THORNCLIFFE BOULEVARD	1,009	1
THORNTON DRIVE	2,035	5
TUCSON DRIVE	636	2
TWIN LAKES DRIVE	1,095	5
WAINSTEAD DRIVE	700	2
WALES AVENUE	45	1
WALTER AVENUE	1,041	1
WARWICK DRIVE	700	2
WEST 16 STREET	685	2
WEST 54 STREET	626	3
WEST LINDEN LANE	170	1
WEST PLEASANT VALLEY ROAD	1,786	10
WEST RIDGEWOOD DRIVE	2,623	37
WEST SPRAGUE ROAD	34	1
WAINSTEAD DRIVE	2,334	8
WESTBROOK DRIVE	212	1
WESTMINSTER DRIVE	6,277	30
WEXFORD AVENUE	840	3
WHITEHAVEN DRIVE	1,233	5
WHITTINGTON DRIVE	2,142	11

STORM - continued

STREET	Jet Footage	# of segments
WILISTON DRIVE	838	5
WINTERPARK DRIVE	1,516	7
WOOD THRUSH DRIVE	1,889	9
JET STORM TOTAL:	182,136	948
2021 JET SANITARY & STORM GRAND TOTAL:	367,133	1,691

Community Streets Inspected*



Section A-2

*No service provided if section is blank

2021 Collection System TV Inspection

PARMA

SANITARY

Street Count: 103

STREET	CCTV Footage	# of segments
ACKLEY ROAD	6,208	28
ALBERTLY AVENUE	1,354	5
ALDEN DRIVE	590	4
AUGUSTINE DRIVE	0	1
BELMERE DRIVE	2,724	10
BERTHA AVENUE	2,163	8
BRADLEY AVENUE	40	1
BROADVIEW ROAD	1,313	4
BROOKPARK ROAD	257	1
BUCKINGHAM DRIVE	210	3
CAMBRIDGE DRIVE	50	1
CHESTNUT HILLS DRIVE	196	1
COCOA DRIVE	535	1
COMMONWEALTH DRIVE	935	3
COVINGTON DRIVE	1,060	4
DARTWORTH DRIVE	1,913	8
DEERFIELD DRIVE	2,375	8
DONCASTER AVENUE	504	3
DOROTHY AVENUE	1,888	7
EDGECLIFF DRIVE	659	3
ESSEN AVENUE	1,760	9
FARNSWORTH DRIVE	3,437	13
FORESTWOOD DRIVE	2,386	10
FRIAR DRIVE	3,992	14
GEORGE AVENUE	917	3
GERALD AVENUE	4,230	12
GETTYSBURG DRIVE	273	1
GOEBEL DRIVE	734	4
HAMPSTEAD AVENUE	862	3
HERESFORD DRIVE	898	3
HILLSDALE AVENUE	2,202	8
HOLBURN ROAD	1,058	5
HOLLYWOOD DRIVE	2,729	11
INGLESIDE DRIVE	3,621	13
IVANDALE DRIVE	1,830	7
JAMESON AVENUE	1,870	6

SANITARY- continued

STREET	CCTV Footage	# of segments
JEANNE DRIVE	4,249	16
JOHNSON DRIVE	1,211	4
KELTONSHIRE ROAD	886	3
KENTON AVENUE	1,680	7
KERNEYWOOD ROAD	896	4
LANYARD DRIVE	2,028	8
LINCOLN EASE	100	1
LUELDA AVENUE	356	1
MANORFORD DRIVE	2,248	10
MAPLECREST AVENUE	1,396	6
MARIONCLIFF DRIVE	658	2
MAYSDAY AVENUE	865	4
MERKLE AVENUE	401	1
MONMOUTH ROAD	467	3
NORTH LINDEN LANE	179	1
ONAWAY OVAL	267	2
OVERLOOK ROAD	605	3
OXFORD DRIVE	903	3
PARKLANE DRIVE	617	3
PARKLEIGH DRIVE	1,700	6
PARMAVIEW LANE	884	1
PARMENTER DRIVE	1,235	4
PELHAM DRIVE	5,145	22
POWERS BOULEVARD	0	1
RENWOOD DRIVE	3,416	12
RENWOOD EASEMENT	25	1
RIDGE ROAD	2,229	17
RIDGEWOOD LAKES DRIVE	940	5
ROYCROFT DRIVE	969	4
SAINT AUGUSTINE DRIVE	222	1
SAINT PETERSBURG DRIVE	483	3
SALISBURY DRIVE	2,065	8
SANDPIPER DRIVE	192	3
SANFORD DRIVE	393	2
SARASOTA DRIVE	810	3
SHERATON DRIVE	2,415	10
SHERIDAN DRIVE	291	1
SHERMAN DRIVE	237	1
SOUTH CANTERBURY ROAD	1,190	5
SOUTH PARK BOULEVARD	1,410	6

SANITARY- continued

STREET	CCTV Footage	# of segments
SOUTHINGTON DRIVE	5,165	19
SPRING GARDEN ROAD	200	1
STANBURY ROAD	1,307	5
STORMES DRIVE	1,242	6
STRATFORD DRIVE	1,080	4
SUNDERLAND DRIVE	3,130	11
SUNHAVEN OVAL	1,103	7
TERRACE COURT	432	3
THORNCLIFF BOULEVARD EASEMENT	279	2
THORNCLIFFE BOULEVARD	1,653	11
THORNTON DRIVE	380	2
TUXEDO AVENUE	90	1
TWIN LAKES DRIVE	1,383	6
VELMA AVENUE	252	1
WAINSTEAD DRIVE	1,435	6
WALTER AVENUE	1,873	6
WARWICK DRIVE	772	2
WEST 60 STREET	992	3
WEST LINDEN LANE	565	2
WESTMINSTER DRIVE	5,628	22
WEXFORD AVENUE	391	2
WHITEHAVEN DRIVE	1,313	5
WHITTINGTON DRIVE	2,651	10
WILBER AVENUE	94	2
WOODBURY HILLS DRIVE	355	1
WOODLAWN DRIVE	57	1
WOODROW AVENUE	4,410	15
CCTV SANITARY TOTAL:	142,268	580

STORM

Street Count: 142

STREET	CCTV Footage	# of segments
ACKLEY ROAD	2,786	13
AMES ROAD	327	2
ARCADIA DRIVE	726	6
AUGUSTINE DRIVE	0	1
BERTHA AVENUE	2,419	9
BISCAYNE BOULEVARD	2,394	14
BONNY BOULEVARD	1,264	10

STORM- continued

STREET	CCTV Footage	# of segments
BRADENTON BOULEVARD	86	1
BRADLEY AVENUE	40	1
BRIAN DRIVE	1,828	12
BROADVIEW ROAD	4,532	20
BROOKPARK ROAD	257	1
BRUENING DRIVE	696	3
BUCKINGHAM DRIVE	270	3
BURDEN DRIVE	790	5
CAMBRIDGE DRIVE	50	1
CECELIA DRIVE	1,784	13
CHESTNUT HILLS DRIVE	1,888	8
CONCORD DRIVE	3,733	23
COVINGTON AVENUE	1,065	5
DARTWORTH DRIVE	1,890	8
DAVID AVENUE	2,599	16
DAY DRIVE	4,938	25
DAYTONA DRIVE	1,330	5
DEERFIELD DRIVE	2,179	9
DONCASTER AVENUE	514	3
DOROTHY AVENUE	2,124	8
ESSEN AVENUE	2,320	7
FLEGER DRIVE	1,329	7
FOREST HILLS BOULEVARD	727	5
FRIAR DRIVE	4,437	16
FRUITLAND DRIVE	1,515	6
GEORGE AVENUE	917	3
GERALD AVENUE	3,201	2
GETTYSBURG DRIVE	273	1
GREEN ACRES DRIVE	3,428	23
GREEN VALLEY DRIVE	854	4
GREENWOOD DRIVE	332	4
HAMPSTEAD AVENUE	0	1
HAUSERMAN ROAD	344	1
HILLCREST LANE	474	3
HILLSDALE AVENUE	1,383	5
HOERTZ ROAD	3,351	15
HOLBURN ROAD	1,414	7
HOLLYWOOD DRIVE	3,136	2
HOPEHAVEN DRIVE	1,436	8

STORM- continued

STREET	CCTV Footage	# of segments
HOWARD STREET	302	3
INGLESIDE DRIVE	3,575	13
IVANDALE DRIVE	1,772	6
JACQUELINE DRIVE	3,138	18
JAMESON AVENUE	1,405	3
JEANNE DRIVE	3,724	16
JILL DRIVE	422	2
JOANN DRIVE	1,281	10
JOHNSON DRIVE	2,056	3
JUDY DRIVE	1,545	9
KELTONSHIRE ROAD	671	3
KENTOM AVENUE	1,368	14
KERNEYWOOD ROAD	793	4
KEY WEST DRIVE	968	5
LALEMANT DRIVE	1,651	7
LANYARD DRIVE	2,077	9
LAURENT DRIVE	1,942	10
LOURDES DRIVE	57	1
LUELDA AVENUE	356	1
LYNETTE DRIVE	953	4
MANORFORD DRIVE	1,005	5
MAPLECREST ROAD	79	1
MAYSDAY AVENUE	723	3
MERKLE AVENUE	401	1
MONMOUTH DRIVE	918	4
NELSON DRIVE	1,126	6
NEWCOMB DRIVE	2,234	16
NORTH LINDEN LANE	179	1
ONAWAY OVAL	467	4
ORCHARD PARK DRIVE	950	6
ORCHARDVIEW ROAD	823	4
ORLANDO DRIVE	971	4
OXFORD DRIVE	1,050	4
PARKLEIGH DRIVE	1,700	6
PARMAVIEW LANE	50	1
PARMENTER DRIVE	1,345	6
PELHAM DRIVE	3,079	15
PLEASANT VALLEY ROAD	2,837	16
POWERS BOULEVARD	2,723	18
RALSTON DRIVE	681	4

STORM- continued

STREET	CCTV Footage	# of segments
RAVENWOODS DRIVE	1,715	9
REGAL DRIVE	720	3
REGENCY DRIVE	3,617	21
RENWOOD DRIVE	2,266	10
RIDGE ROAD	6,940	38
RIDGEWOOD DRIVE	3,529	53
RIDGEWOOD LAKES DRIVE	1,570	8
ROBERT STREET	1,166	8
ROYAL RIDGE DRIVE	2,252	9
SAINT PETERSBURG DRIVE	428	3
SALISBURY DRIVE	1,073	6
SANDPIPER DRIVE	192	3
SELWICK DRIVE	2,405	11
SHERIDAN DRIVE	291	1
SHERMAN DRIVE	237	1
SNOW ROAD	2,126	19
S CANTERBURY ROAD	2,234	9
SOUTHINGTON DRIVE	1,249	7
SPRING GARDEN ROAD	1,984	7
STANBURY ROAD	3,278	16
STATE ROAD	370	4
STORMES DRIVE	1,242	6
STRATFORD DRIVE	1,300	7
SUN VISTA DRIVE	494	5
SUNHAVEN OVAL	1,330	8
TAMIAMI DRIVE	792	4
TERRACE COURT	1,158	4
THORNCLIFF BOULEVARD EASEMENT	279	2
THORNCLIFFE BOULEVARD	2,335	15
TORRINGTON AVENUE	1,144	4
TUCSON DRIVE	636	2
TUXEDO AVENUE	184	2
THORNTON DRIVE	2,035	5
TWIN LAKES DRIVE	1,095	5
VELMA AVENUE	252	1
WAINSTEAD DRIVE	2,334	8
WALES AVENUE	1,953	8
WALTER AVENUE	1,873	6
WARWICK DRIVE	754	2

STORM- continued

STREET	CCTV Footage	# of segments
WELLINGTON AVENUE	2,209	8
WEST 60 STREET	992	3
W PLEASANT VALLEY ROAD	1,786	10
W RIDGEWOOD DRIVE	2,623	37
W SPRAGUE ROAD	34	1
WEST LINDEN LANE	683	2
WESTBROOK DRIVE	212	1
WESTMINSTER DRIVE	6,277	30
WHITEHAVEN DRIVE	1,233	5
WHITTINGTON DRIVE	2,142	11
WILBER AVENUE	94	2
WILISTON DRIVE	838	5
WINTERPARK DRIVE	3,217	16
WOODBURY HILLS DRIVE	355	1
WOODROW AVENUE	1,981	2
WOOD THRUSH DRIVE	1,889	9

CCTV STORM TOTAL: 214,174 1,094

2021 CCTV SANITARY & STORM GRAND TOTAL: 356,442 1,674

Plan Approvals*



Section A-3

*No service provided if section is blank

Parma Plan Approvals

Project ID	Project Name	Approval Date
19-039(2)	JKR BUILDING PH. 2 (150K BLDG)	24-Mar-2021
21-011(1)	BROADROCK CT AND OLD ROCKSIDE RD SEWER IMP	19-Apr-2021
20-037(1)	BLUE FALLS CAR WASH & CONRAD'S	29-Apr-2021
20-037(2)	BLUE FALLS CAR WASH & CONRAD'S	29-Apr-2021
21-019(1)	GUTTERS UNLIMITED LLC	3-May-2021
20-036(1)	BANK OF AMERICA, PARMA	18-May-2021
17-044(1)	SNOW RD. SELF STORAGE	6-Jul-2021
20-005(1)	MEIJER'S STORE #321 BROADVIEW RD.	3-Sep-2021
18-010(2)	PARMA WELLNESS CENTER	29-Sep-2021
21-031(1)	7270-7272 RIDGE ROAD DRAINAGE	2-Nov-2021
21-033(1)	CLEAN EXPRESS CAR WASH	30-Dec-2021

Service Program Summary*



Section A-4

*No service provided if section is blank

City of Parma

<u>Type</u>	<u>Community Total</u>
Sanitary Sewers	1,268,160 Feet
Manholes	5,430 (Approximately)

2021 Service Program

<u>Program</u>	<u>2021 Activity</u>
1) High Pressure Jet Cleaning Sanitary – 184,997 Feet Storm – 182,136 Feet	367,133 Feet
2) House Service	2,372 Calls
3) Television Inspection Sanitary – 142,268 Feet Storm – 214,174 Feet	356,442 Feet
4) Construction Activities	719 Job(s)
5) Dye Testing	18 Test(s)
6) Construction Permits Issued (Commercial) (Residential)	14 106
7) Plan Approvals	11 Plan(s)
8) Construction Inspection a) Main Lines Inspected b) Public R.O.W. Service Laterals c) Commercial/Residential Service Laterals	3,726 Feet 2,760 Feet 5,177 Feet
9) Catch Basins Cleaned	215

Community Operating Expenses*



Section A-5

*No service provided if section is blank

City of Parma

2021 Operating Expenses

<u>Activity</u>	<u>Cost</u>
1. Maintenance of Sanitary Sewerage Systems	\$3,866,622
2. Pump Station Operation and Maintenance	\$142,260
3. Wastewater Treatment Plant Maintenance	\$ 0
4. Engineering and/or Inspection	\$324,924
5. Capital Expenses (See Section A-6 if any)	\$972,521
Total Operating Expenses:	\$5,306,327

Community Capital Expenses*



Section A-6

*No service provided if section is blank

City of Parma

2021 Capital Expenses

Augustine Drive Lining	\$ 31,874
Broadrock Drill Drop Loan	\$ 13,300
Broadview Drill Drop Loan	\$ 22,083
Broadview Road Repair	\$ 12,416
Essen Avenue Repair	\$ 32,269
Fernhill Loan	\$ 98,249
Gerald Drive Repair	\$ 23,775
Hillsdale Drive Repair	\$ 24,648
Hollywood Drive Lining	\$ 39,948
Hollywood Drive Repair	\$ 42,802
Ingleside Drive Repair	\$ 202,873
Jameson Avenue Repair	\$ 20,636
Lincoln Avenue Repair	\$ 15,962
Ridge Road Repair	\$ 69,463
Regal Drive Repair	\$ 19,385
Sewer Repair Loan	\$ 82,248
Sprague Road Permit to Install	\$ 2,600
St. Petersburg Drive Repair	\$ 34,759
Stormes Avenue Repair	\$ 23,412
Terrace Court Repair	\$ 75,908
Winthrop Drive Repair	\$ 20,658
Woodrow Avenue Repair	\$ 44,379
York Road Repair	\$ 18,874
Total Capital Expenses:	\$ 972,521



CONTACT INFORMATION

Cuyahoga County Department of Public Works
2501 Harvard Avenue
Newburgh Heights, OH 44105

Email: Publicworks@cuyahogacounty.us

Website: Publicworks.cuyahogacounty.us

Michael W. Dever, M.P.A.	Director of Public Works
David Ray, P.E, P.S.	Cuyahoga County Engineer
Thomas P. Sotak, P.E.	Deputy Chief - Engineering
Bryan J. Hitch	Deputy Chief - Maintenance
Mellany M. Seay	Finance & Operations Administrator
Nichole L. English, P.E.	Planning & Programming Administrator
Laura A. Weber, P.E.	Chief Section Engineer Sanitary
Edward V. Premen, M.B.A.	Business Services Manager

Department of Public Works Administrative Headquarters
2079 East Ninth Street- 5th Floor
Cleveland, Ohio 44115

Dispatch Office.....	(216) 443-8201
Dispatch Email.....	PWDispatch@cuyahogacounty.us
Administration.....	(216) 348-3867
Inspection & Permits.....	(216) 443-8209
Sewer Maintenance.....	Gary Green, Senior Supervisor(216) 443-8225
Sewer Maintenance.....	John Gribble, Senior Supervisor(216) 443-8227
Lateral Services.....	Brandon Skufca, Supervisor(216) 698-3566
Construction (EAST).....	Dave Novak, Supervisor(216) 348-4238
Construction (WEST).....	Mitchell Holt, Supervisor(216) 348-3849
Sewer Jetting.....	Tom Noy, Supervisor(216) 348-3901
Televised Inspection.....	Todd Swindell, Supervisor(216) 443-8224
Pump Station Operations.....	Robert Dietrich, Supervisor(216) 698-8482
Sewer Maintenance(2 nd).....	John Campbell, Supervisor(216) 443-8226
Sewer Maintenance(2 nd).....	Pat Mauk, Supervisor(216) 443-8229



Cuyahoga County
Together We Thrive

Cuyahoga County Department of Public Works

2079 East Ninth Street
Cleveland, OH 44115
216.348.3800