

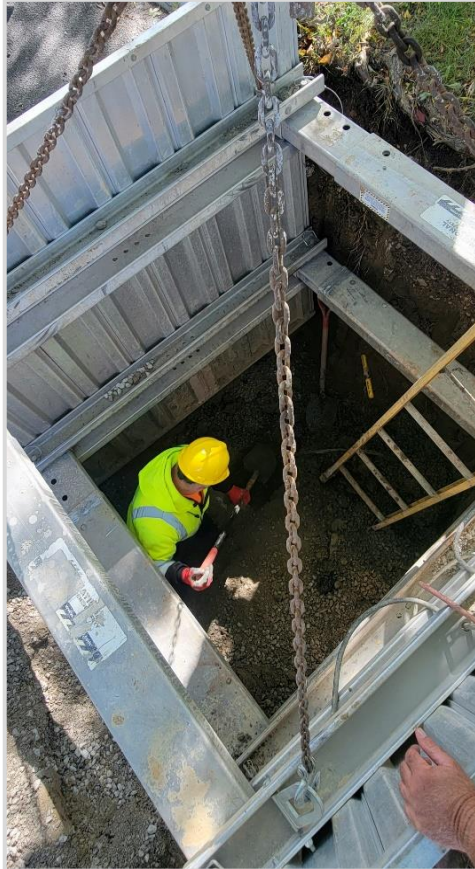


Cuyahoga County
Together We Thrive

2022 Annual Report

Prepared
for the:

City of Highland Heights



By the: **Department of Public Works**





March 13, 2023

The Honorable Chuck Brunello, Jr.
City of Highland Heights
5827 Highland Road
Highland Heights, Ohio, 44143

Dear Mayor Brunello,

As the Director of Public Works, I am pleased to submit the 2022 Annual Report for the City of Highland Heights. Our work within the communities, including yours, focuses on addressing infrastructure needs and meeting Ohio EPA goals for collection system operation and maintenance. We continue to provide efficiency for sanitary and storm sewer maintenance throughout the County by maintaining a second shift to enable us to reduce overtime and to work in areas where normal working hour traffic is problematic. Our goal is always to provide a high level of service in a cost-effective manner.

Through the work of our dedicated staff members, we have been able to continue to provide reliable maintenance services throughout our service area and we will continue to provide quality service for our member communities throughout the year.

This annual report contains a detailed overview of the work completed within your municipality in the past year. The overview of the work performed includes the following: collection system jet cleaning and CCTV inspection history, plan approval status, service program summary details and community operating and capital expenses.

The annual report for this and previous years is also available on our website at:

<https://cuyahogacounty.us/publicworks/services/sewer-maintenance-services>

The Rules and Regulations and Uniform Standards and Details issued by the County continue to be available on our web site:

<https://www.cuyahogacounty.us/publicworks/services/design-and-construction/sanitary-design/sanitary-design-construction-drawings-and-standards>

My staff is available to meet with you at your convenience should you wish to discuss this report or any of the services that our department provides. I am pleased and grateful for the opportunity of serving you through the Cuyahoga County Department of Public Works.

Respectfully submitted,

Michael W. Dever, MPA, Director
Department of Public Works

cc: (with attachments)

Brian Belfiore, Service Director

Brian Mader, P.E., City Engineer



The Power of Consolidation

2501 Harvard Avenue – Newburgh Heights

Sanitary Engineering, Road & Bridge & Fleet Management are consolidated at one location



The Harvard Avenue Maintenance Yard facility is home to approximately 180 staff members and is geographically centralized in Cuyahoga County to better serve the surrounding communities.

- ADA-compliant design for all Office, Conference , and Training Room areas
- Conference and Training Rooms for up to 200 visitors
- Fleet Maintenance Area features: 9 static lifts and 3 mobile lifts
- Vehicle fueling areas for both Diesel and Gasoline
- Interior Vehicle Wash Bay
- LED Lighting for Interior Office, Garage, Exterior Parking Lot and Site Lighting
- Materials Storage Yard
- Dispatch Area
- Permits Area





SANITARY FLEET FACTS

THE POWER OF REGIONALISM



Current vehicles & equipment	Quantity
House Trucks	13
Specialized Plate Truck & specialized vehicles for catch basin repair	7
Combination Jet-Vac & Straight Jet Trucks	10
TV Camera Trucks	7
Backhoes, Mini Excavators & Rubber Wheel Loader	7
Class 5 Dump Trucks	6
Construction trucks	8
1-ton trucks for pump station service	5
43,000 to 53,000 GVWR single-axle dump trucks	6
58,000 to 60,000 GVRW tandem axle dump trucks	12
Class 550 with crane for pump station service	3
20-25 ton trailers	11
Small Trailers	13



Table of Contents



Overview.....1

Appendix Description.....8

Community Streets Cleaned.....A-1

Community Streets Televised.....A-2

Plan Approval Status.....A-3

Service Report Summary.....A-4

Community Operating Expenses.....A-5

Community Capital Expenses.....A-6

Contact Information.....Rear Folio



OVERVIEW

Established in 1919, the office of the Cuyahoga County Sanitary Engineer was created to provide administrative authority in matters of wastewater, storm water, and water supply management. In 2012, the Sanitary Engineering Division (formerly CCSE) became a part of the Cuyahoga County Department of Public Works (CCDPW), and now operates under County Executive Chris Ronayne.

The Sanitary Division's focus is on the maintenance and repair of aging sewer lines, sewer system needs assessment, engineering feasibility studies, and other infrastructure-related issues. These areas all have a direct impact on commercial and residential development, job creation, and expanding the tax base in the communities served by the Department of Public Works. Furthermore, the Sanitary Division is a major source of technical information for communities (mayors, municipal engineers, and service directors), which provides them with guidance for making infrastructure decisions within their community. The Sanitary Division has considerable experience in the maintenance, repair, and rehabilitation of sanitary and storm sewer systems, as well as significant expertise with respect to the operation and maintenance of pump stations and wastewater treatment plants.



The Sanitary Engineering Division of Public Works currently operates in 38 communities by agreement. Pursuant to such agreements, the Sanitary Division maintains more than 1,500 miles of sanitary sewers and 1,100 miles of storm sewers and operates 67 sewage-pumping stations. Working in cooperation with the Ohio Environmental Protection Agency (Ohio EPA), the Northeast Ohio Regional Sewer District (NEORS), the Cuyahoga County Board of Health (CCBH), and the various communities, the Sanitary Division works to maintain water quality. This is done through the construction of new sanitary sewers, maintenance of existing sewer systems, and the investigation and remediation of illicit discharges (sanitary sewage which is improperly discharged into storm sewers).

All funds used for operation, maintenance, rehabilitation, and repair of the sewerage system are generated through fees and assessments. (Funding is not via the County's General Fund to perform these activities.)

The Department of Public Works has been in the forefront of regionalism efforts within the County. With services provided to more than half of the County's 59 communities, the Sanitary Division continues to maintain reasonable rates and improve infrastructure throughout the area.



GOALS

The Sanitary Engineering Division of Public Works has three (3) major goals:

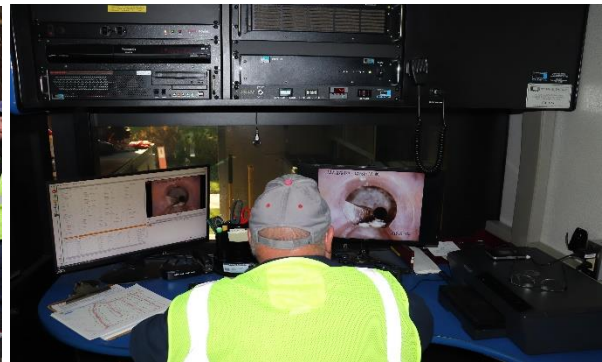


1. Operate and maintain the sanitary sewerage systems to assist the communities in meeting the goals and objectives of the EPA Capacity Management Operation and Maintenance (CMOM) guidelines.
2. Provide guidelines for design and construction through the County's "Uniform Standards for Sewerage Improvements" and "Rules and Regulations."
3. Issue sewer connection permits and provide construction inspection for new sanitary sewers and new connections to existing sanitary sewers.

The goals of the Sanitary Engineering Division with respect to the maintenance and repair of sewers are accomplished through the activities of our three main Sanitary Division groups working together: Maintenance Services; Engineering & Construction Services; and Administrative Services.

MAINTENANCE SERVICES

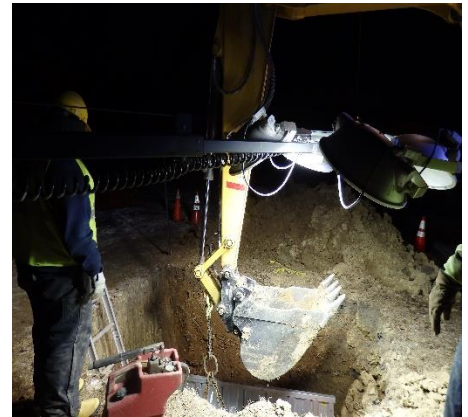
- Reduction of the number of flooded basements by maintaining existing capacity in the collection systems, minimize the inflow/infiltration of storm water to the sanitary system, and evaluate the structural integrity of the sewerage system;
- Optimization of maintenance efficiency to reduce operating costs and provide more available funds for capital improvement projects and repairs;
- Operation of wastewater treatment plants in compliance with the National Pollution Discharge Elimination System (NPDES) permit parameters;
- Maintenance and inspection of the existing collection system to achieve EPA CMOM maintenance goals;
- Operation and maintenance of pumping stations;
- Performance of Illicit Discharge Detection and Elimination Services





ENGINEERING AND CONSTRUCTION SERVICES

- Preparation of Task Orders for repairs and rehabilitation;
- Plan review and approval of all new sewer improvements within the County service area;
- Performance of engineering analyses (required for operation of facilities and the collection system);
- Capital improvement planning;
- Construction management and inspection;
- Provision of guidelines for new construction through use of the CCDPW *Uniform Standards for Sewerage Improvements*;
- Provision of infrastructure needs assessment for communities;
- Project design;
- Construction inspection of new wastewater collection systems within the county service area; and,
- Record keeping of as-built plans and test tee locations.



ADMINISTRATIVE SERVICES

- Issuance of connection permits;
- Maintenance of Record Drawings;
- Provision of Geographical Information Systems (GIS) for development and implementation;
- Fiscal oversight of annual operating budget and capital improvement budget;
- Administration of Grants and loans; and,
- Licensing and permitting of more than 200 contractors.

SUMMARY OF COUNTY-WIDE MAINTENANCE SERVICES

SEWERS

- High-pressure jetting of sewers in the right-of-way, approximately **305 miles of sewers in 2022**
- Point repairs of sewers, force mains, and structures; **2,746 construction visits; and 884 catch basins cleaned;**
- **Cleaning of 7,824 service laterals**, including emergency maintenance and 24-hour on-call team for resident issues;
- **CCTV inspection** of approximately **253 miles** of sewers to provide condition ratings, failures and/or deficiencies;
- **I/I investigation and remediation, 287 visits;**
- Implementation of preventative maintenance and upgrades to pumping stations, as well as the provision of licensed operators to monitor the condition of those facilities.





The Maintenance Services Department provides a full-service program to clean sewers, provide National Association of Sewer Service Companies (NASSCO) Pipeline Assessment Certification Program (PACP) condition ratings of sewers, maintain the structural integrity of the sewer systems, and perform repairs on sanitary and storm sewers. The objective of the program is the cleaning of all sanitary sewers every three years and performing video inspection every six years. This timeline is well within the NEORSD's "Best Management Practices" guidelines.

■ HOUSE LATERAL SERVICES

The Maintenance Services House Lateral Service Department cleaned 7,824 house lateral connections in 2022. The goal is to alleviate sewer back-ups by clearing blocked mains and cleaning service connections to restore sewer capacity.

The House Lateral Service Department also performs flow monitoring for Inflow and Infiltration (I&I) analysis, dye testing, smoke testing, and lateral sewer inspection to identify I&I sources and locations of illicit discharges. The Department works with the communities, the Ohio EPA and the NEORSD to protect local waterways.





■ PUMPING STATIONS

The County operates 67 pumping stations throughout the 38 communities pursuant to the maintenance agreements. A Supervisory Control and Data Acquisition (SCADA) system monitors the stations. The system provides alarms and operational status through a central computer, providing 24-hour monitoring. New pump stations are added to the SCADA system as they come on-line. Our maintenance staff consists of experienced operators and technicians enabling us to repair most problems in-house, therefore keeping costs down. Their preventive maintenance program and dedication to the job has reduced emergency callouts and overflows.



■ CAPACITY, MANAGEMENT, OPERATION, AND MAINTENANCE PROGRAM (CMOM)

The CMOM Program is a set of “best management practices” that have been developed by the industry and are applied over the life cycle of the sewer collection system. It is these general practices that are taken into consideration when a system is being reviewed by a federal or state agency. Improvement and recommendations are provided by the agencies based on deficiencies identified in the sanitary sewer system.

We continue to work with the NEORS (through their community discharge program) and with the Ohio EPA to ensure that our Sanitary Division’s best practices meet the CMOM goals.





SUMMARY OF ENGINEERING & CONSTRUCTION SERVICES

The Engineering and Construction Services Departments provide technical services to the communities including, but not limited to, capital project planning, grant and loan administration, design engineering, construction management, as well as inspection of sanitary and storm sewers, and pump stations.

The sewer repair and rehabilitation program is managed by in-house personnel. A Sanitary Division engineer is assigned to each community to provide an individual contact for sewer related issues. Under the existing sewer maintenance agreements (based on video inspection information and requests from the communities), the County issues Task Orders for repair and rehabilitation by our personnel, supplemented by several third-party contractors.

In 2022, on behalf of member communities, design plans were reviewed for over 50 construction projects. The Sanitary Engineering Division also coordinates and analyzes the results of field testing and flow monitoring to detect and eliminate storm water inflow/infiltration (I/I) from the sanitary sewer system and illicit discharges to the storm sewer system. Record drawings are prepared, scanned, and filed for record keeping. Information on new sewers and service connections is provided to our IT personnel for incorporation into the County's Geographical Information System (GIS).

The Sanitary Engineering Division and the Construction Department also oversee capital construction projects, including the development of financial packages in the form of grants and loans obtained from the State of Ohio. These funds are utilized for lining, repairing, replacing, and rehabilitating existing sanitary and storm sewerage systems.

The Construction staff provides inspection of all new sanitary sewers and for the connection of service laterals to existing sewers. The Inspectors ensure that projects are constructed in conformance to design plans, specifications, and the County's *"Uniform Standards."*





SUMMARY OF ADMINISTRATIVE SERVICES

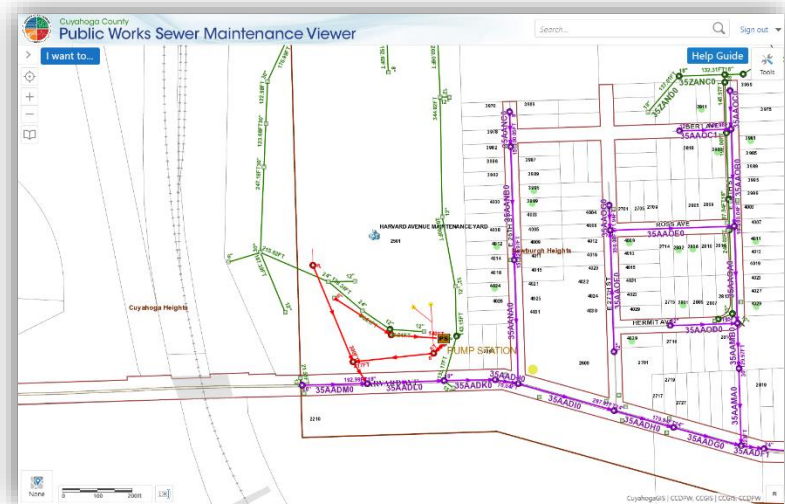
■ PERMITS

The County issues residential and commercial sewer service connection permits for 38 communities. Only contractors registered with the Department of Public Works can obtain a permit. The permit process includes inspection by the County to ensure that the work is performed in conformance to the “Uniform Standards and Details”. Permanent records of all sewer connections are maintained by the County.

■ INFORMATION TECHNOLOGY

Information Technology (IT) provides computer and analytical support to internal end-users and to the communities serviced by the CCDPW. IT is responsible for the design, implementation, and maintenance of our Geographical Information System (GIS), other relational database systems, and guiding data acquisition tasks throughout the CCDPW. The GIS mapping program catalogues the location of sewer systems and performs analysis on spatial data. This information supports the planning, design, and maintenance of sewer systems, and ensures user fees are appropriately assessed and collected. Furthermore, the mapping program features access to information regarding permits that are on record.

Our Geographical Information System is continually being updated and expanded to include information on repair and rehabilitation activities as well as system maintenance and inspection activities. Information is shared between the County, member communities, and the NEORSRD to improve services and foster collaboration.



■ FINANCE

The Finance Department provides support services to various units within the CCDPW. Automated cost accounting programs and systems ensure accurate tracking and monitoring of expenditures, revenues, rate structures, and other data that provide financing for capital projects and operational budgets. All systems and programs are operated under generally accepted accounting principles. The CCDPW oversees an annual storm and sanitary sewer operating budget of more than \$26 million. Finance is responsible for accounts receivable, accounts payable, cost accounting, audit, inventory control, capital project financing, purchasing, and sewer assessment revenue management for member communities.

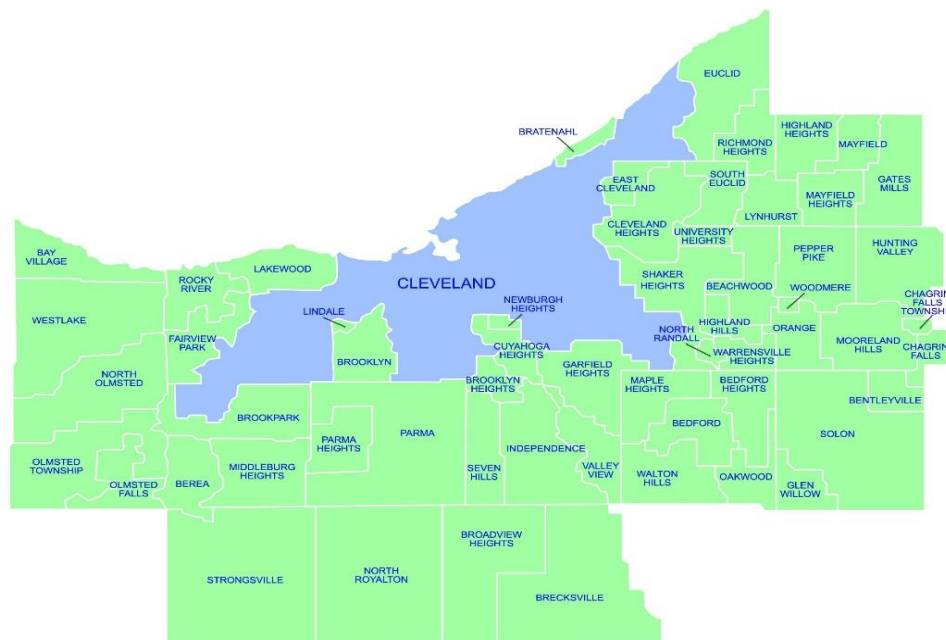


Appendix Description*

The following appendices contain a variety of reports representing the services provided to member communities in 2022. The CCDPW follows a manhole-to-manhole, sewer segment-based accounting method for jet cleaning and TV (video) inspection maintenance services. The first two appendices contain listings of the collection system cleaned and inspected for the year by street. The next appendix lists the plan approvals for the more significant projects submitted to, reviewed, and approved by the Engineering Department during the year for your community. Smaller review services such as house connections or ongoing, intermittent reviews of large multi-phase projects spanning several years of development are not shown on this report. The final appendices provide a breakdown of services including house visits, inflow/infiltration studies, construction activity, operating expenses, and capital project costs contracted for the community.

This annual report, along with a map showing areas where collection system mainlines were jet cleaned and TV inspected, locations where construction crew activities were provided, house visits where house lateral connections needed to be cleaned or inspected, is available on our website at <https://cuyahogacounty.us/publicworks/services/sewer-maintenance-services/city-service-maps-annual-reports>. Adobe Corporation's free reader software is required and can be downloaded from www.adobe.com.

*** Please note:** These appendix reports are provided only to communities for which specific services are provided by the CCDPW. For example, if a regularly scheduled mainline cleaning service is not provided for your community, a map was not produced. Similarly, if project review or capital project management services are not provided for your community, then there is also no corresponding report. Furthermore, certain specific member communities are provided limited maintenance only on County improvement mainlines and/or facilities.



Community Streets Cleaned*



Section A-1

*No service provided if section is blank

2022 Collection System Jet Cleaning HIGHLAND HEIGHTS

SANITARY

Street Count: 63

STREET	Jet footage	# of segments
ABERDEEN BOULEVARD	3,813	18
ALDEN LANE	636	3
AUGUSTUS DRIVE	769	6
AVION PARK DRIVE	1,478	6
BISHOP EASEMENT	1,248	4
BURWICK ROAD	3,354	17
CASTLEHILL DRIVE	2,151	7
COLDSTREAM ROAD	1,889	6
DIANA COURT	1,412	7
DORNOCH LANE	389	4
DUNBAR LANE EASEMENT	139	1
DUNBAR LANE	2,716	16
EAST ANDREWS DRIVE	380	2
EAST EDINBURGH DRIVE	1,445	7
EAST GLEN EAGLE	358	2
EAST GLENGARY CIRCLE	674	5
EAST KILBRIDGE DRIVE	321	4
EDINBURGH EASEMENT	299	1
FORD ROAD	286	1
GLASGOW DRIVE	903	8
GLENCOE LANE	504	5
GOLF VIEW LANE	1,198	8
GREENWAY COURT	1,415	8
GRETNA GREEN DRIVE	727	3
HALTON TRAIL	342	1
INVERNESS DRIVE	847	7
KENARDEN DRIVE	2,033	7
KILBRIDGE DRIVE	103	1
KIRKSHIRE COURT	350	1
LASSITER DRIVE	2,719	8
LEGACY DRIVE	1,114	4
LEGEND COURT	1,163	5
LEGEND DRIVE	1,172	7
LEVERETT LANE	2,108	7
LOCKLIE DRIVE	1,576	6

SANITARY continued

STREET	Jet footage	# of segments
LONGSPUR ROAD	3,536	12
LOWELL DRIVE	2,465	9
LYNDEN DRIVE	2,167	6
MAYPINE FARM BOULEVARD	1,559	5
MEDWAY ROAD	2,104	6
MINER ROAD	5,908	19
MUIRFIELD DRIVE	2,410	16
NORTH APPLECROSS ROAD	1,827	7
NORTH LEGEND COURT	588	3
NORTH STONEHAVEN DRIVE	425	2
OLD SALEM TRAIL	340	1
OX RIDGE TRAIL	719	4
SAINT ANDREWS DRIVE	273	1
SANDHURST DRIVE	2,318	6
SHETLAND COURT	142	1
SKYE ROAD	1,310	8
SOUTH APPLECROSS RD	1,450	5
SOUTH STONEHAVEN DR	247	1
STIRLING DRIVE	635	7
SUTHERLAND DRIVE	248	2
TOURELLE DRIVE	2,243	7
TOURELLE EASEMENT	410	1
WEST ANDREWS DRIVE	333	2
WEST EDINBURGH DRIVE	1,453	9
WEST GLENGARY CIRCLE	464	2
WEST KILBRIDGE DRIVE	326	2
WHITEFORD DRIVE	2,595	9
WILSON MILLS ROAD	0	1
JET SANITARY TOTAL:	80,526	357

STORM

Street Count: 22

STREET**Jet Footage****# of segments**

ABERDEEN BOULEVARD	673	3
ABERDEEN EASEMENT	710	2
ALPHA DRIVE	120	1
AUGUSTUS DRIVE	1,501	17
CASTLEHILL EASEMENT	121	1
DORNOCH LANE	254	3
EAST INVERNESS DRIVE	1,028	10
GLENCOE LANE	502	6
GLENGARY CIRCLE	1,090	5
KIRKSHIRE COURT	338	2
MUIRFIELD DRIVE	278	6
NORTH GREENWAY COURT	2,091	10
NORTH STONEHAVEN DRIVE	716	4
SANDHURST DRIVE	2,600	9
SANDHURST EASEMENT	1,374	9
SHETLAND EASEMENT	320	2
SOUTH GREENWAY COURT	260	3
SOUTH STONEHAVEN DRIVE	294	1
WEST GLEN EAGLE DRIVE	563	4
WEST INVERNESS DRIVE	491	5
WHITEFORD DRIVE	987	6
WILSON MILLS ROAD	0	2

JET STORM TOTAL:**16,311****111****2022 JET SANITARY & STORM GRAND TOTAL:****96,837****468**

Community Streets Inspected*



Section A-2

*No service provided if section is blank

2022 Collection System TV Inspection

HIGHLAND HEIGHTS

SANITARY

Street Count: 68

STREET	CCTV Footage	# of segments
ABERDEEN BOULEVARD	5,700	27
ALDEN LANE	637	3
AUGUSTUS DRIVE	775	6
BISHOP EASEMENT	1,255	4
BURWICK ROAD	3,140	16
CASTLEHILL DRIVE	2,182	7
COLDSTREAM ROAD	2,206	7
COLONY DRIVE	2,978	11
CRANBROOK DRIVE	972	4
DIANA COURT	1,726	8
DORNOCH LANE	396	4
DUNBAR LANE EASEMENT	138	1
DUNBAR LANE	970	5
EAST ANDREWS DRIVE	373	2
EAST EDINBURGH DRIVE	1,273	6
EAST GLEN EAGLE	364	2
EAST GLENGARY CIRCLE	1,057	6
EAST KILBRIDGE DRIVE	322	4
EASTLAWN DRIVE	834	4
EDINBURGH EASEMENT	301	1
FORD ROAD	2,986	11
GLASGOW DRIVE	914	8
GLENCOE LANE	509	5
GOLF VIEW LANE	1,209	8
GREENWAY COURT	1,560	9
GRETNA GREEN DRIVE	735	3
HALTON TRAIL	346	1
HIGHLAND ROAD	547	1
INVERNESS DRIVE	849	7
KENARDEN DRIVE	2,065	7
KILBRIDGE DRIVE	101	1
LASSITER DRIVE	1,720	5
LEGACY DRIVE	1,468	5
LEGEND COURT	1,372	7
LEGEND DRIVE	2,743	8
LEVERETT LANE	1,964	7

SANITARY

STREET	CCTV Footage	# of segments
LOCKLIE DRIVE	2,310	8
LONGSPUR ROAD	3,806	13
LONSPUR EASEMENT	41	1
LOWELL DRIVE	2,500	9
LYNDEN DRIVE	2,184	6
MAYPINE FARM BOULEVARD	1,583	5
MEDWAY ROAD	2,119	6
MILLRIDGE ROAD	2,744	14
MINER ROAD	6,315	21
MUIRFIELD DRIVE	1,149	8
NORTH APPLECROSS ROAD	1,916	7
NORTH LEGEND COURT	397	2
NORTH STONEHAVEN DRIVE	429	2
OLD SALEM TRAIL	344	1
OX RIDGE TRAIL	499	3
PERTH DRIVE	338	1
SAINT ANDREWS DRIVE	278	1
SANDHURST DRIVE	2,356	6
SKYE ROAD	1,323	8
SOUTH APPLECROSS ROAD	1,464	5
SOUTH STONEHAVEN DRIVE	248	1
STIRLING DRIVE	242	3
SUTHERLAND DRIVE	176	1
TOURELLE DRIVE	1,920	6
TOURELLE EASEMENT	412	1
WEST ANDREWS DRIVE	338	2
WEST EDINBURGH DRIVE	1,710	9
WEST GLENGARY CIRCLE	795	3
WEST GLENGARY EASEMENT	374	1
WEST KILBRIDGE DRIVE	328	2
WHITEFORD DRIVE	2,252	8
WILSON MILLS ROAD	1,226	7

CCTV SANITARY TOTAL: 92,803 392

STORM

Street Count: 2

STREET	CCTV Footage	# of segments
ALPHA DRIVE	98	1
WILSON MILLS ROAD	300	2

CCTV STORM TOTAL: 398 2

2022 CCTV SANITARY & STORM GRAND TOTAL: 93,201 394



Plan Approvals*



Section A-3

*No service provided if section is blank

Highland Heights 2022 Plan Approvals

Project ID	Project Name	Approval Date
22-012(1)	METRO VET	30-Mar-2022
21-038(1)	GRAPPA FARMS SUBD.	12-Apr-2022
22-044(1)	LANDER ROAD LAT CONN	2-Sep-2022

Service Program Summary*



Section A-4

*No service provided if section is blank

City of Highland Heights

<u>Type</u>	<u>Community Total</u>
Sanitary Sewers	245,453 Feet
Manholes	1,066 (Approximately)

2022 Service Program

<u>Program</u>	<u>2022 Activity</u>
1) High Pressure Jet Cleaning Sanitary - 80,526 Feet Storm - 16,311 Feet	96,837 Feet
2) House Service	246 Calls
3) Television Inspection Sanitary - 92,803 Feet Storm - 398 Feet	93,201 Feet
4) Construction Activities	88 Job(s)
5) Dye Testing	1 Test(s)
6) Construction Permits Issued (Commercial) (Residential)	15 1
7) Plan Approvals	3 Plan(s)
8) Construction Inspection PUBLIC: Mainline & Lateral PRIVATE: Commercial & Residential	3,719 Feet 4,529 Feet
9) Catch Basins Cleaned	21

Community Operating Expenses*



Section A-5

*No service provided if section is blank

City of Highland Heights
2022 Operating Expenses

<u>Activity</u>	<u>Cost</u>
1. Maintenance of Sanitary Sewerage Systems	\$659,168
2. Pump Station Operation and Maintenance	\$ 0
3. Engineering and/or Inspection	\$64,879
4. Capital Expenses (See Section A-6 if any)	\$16,515
 Total Operating Expenses:	 \$740,562

Community Capital Expenses*



Section A-6

*No service provided if section is blank

City of Highland Heights

2022 Capital Expenses

Jefferson Drive Sewer Lining Loan \$ 16,515

Total Capital Expenses: \$ 16,515



CONTACT INFORMATION

Department of Public Works Administrative Headquarters
2079 East Ninth Street - 5th Floor
Cleveland, OH 44115

Email: Publicworks@cuyahogacounty.us

Website: Publicworks.cuyahogacounty.us

Michael W. Dever, M.P.A.	Director of Public Works
David Ray, P.E, P.S.	Cuyahoga County Engineer
Bryan J. Hitch	Deputy Chief - Maintenance
Thomas P. Sotak, P.E.	Deputy Chief - Engineering
Mellany M. Seay	Finance & Operations Administrator
Nichole L. English, P.E.	Planning & Programming Administrator
Laura A. Weber, P.E.	Chief Section Engineer Sanitary
Edward V. Premen, M.B.A.	Business Services Manager

Department of Public Works
Sanitary Maintenance Division
2501 Harvard Avenue
Newburgh Heights, Ohio 44105

Dispatch Office.....	(216) 443-8201
Dispatch Email.....	PWDispatch@cuyahogacounty.us
Administration.....	(216) 348-3867
Inspection & Permits.....	(216) 443-8209
Sewer Maintenance.....	Gary Green, Senior Supervisor(216) 443-8225
Sewer Maintenance.....	John Gribble, Senior Supervisor(216) 443-8227
Lateral Services.....	Brandon Skufca, Supervisor(216) 443-8226
Construction (EAST).....	Dave Novak, Supervisor(216) 348-4238
Construction (WEST).....	Mitchell Holt, Supervisor(216) 443-8229
Sewer Jetting.....	Tom Noy, Supervisor(216) 348-3901
Televised Inspection.....	Todd Swindell, Supervisor(216) 443-8224
Pump Station Operations.....	Robert Dietrich, Supervisor(216) 698-3566
Sewer Maintenance (2 nd).....	John Campbell, Supervisor(216) 443-8295
Sewer Maintenance (2 nd).....	Pat Mauk, Supervisor(216) 348-3849



Cuyahoga County
Together We Thrive

Cuyahoga County **Department of Public Works**

Administrative Headquarters
2079 East Ninth Street
Cleveland, OH 44115
216.348.3800