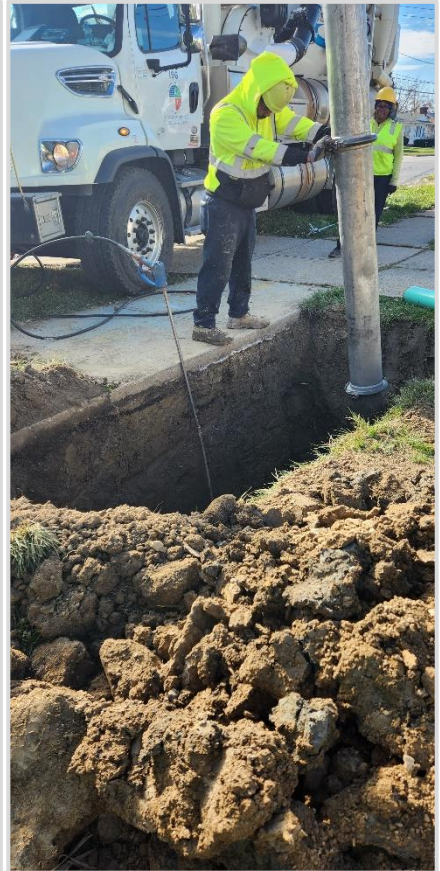




2023 Annual Report

Prepared for the: **City of Brecksville**



By the: **Department of Public Works**





March 14, 2024

The Honorable Daryl Kingston
City of Brecksville
9069 Brecksville Road
Brecksville, Ohio, 44141

Dear Mayor Kingston,

As the Director of Public Works, I am pleased to submit the 2023 Annual Report for the City of Brecksville. Our work within the communities, including yours, focuses on addressing infrastructure needs and meeting Ohio EPA goals for collection system operation and maintenance. We continue to provide efficiency for sanitary and storm sewer maintenance throughout the County by maintaining a second shift to enable us to reduce overtime and to work in areas where normal working hour traffic is problematic. Our goal is always to provide a high level of service in a cost-effective manner.

Through the work of our dedicated staff members, we have been able to continue to provide reliable maintenance services throughout our service area and we will continue to provide quality service for our member communities throughout the year.

This annual report contains a detailed overview of the work completed within your community in the past year. The overview of the work performed includes the following: collection system jet cleaning and CCTV inspection history, plan approval status, service program summary details and community operating and capital expenses.

The annual report for this and previous years is also available on our website at:

<https://cuyahogacounty.gov/publicworks/services/sewer-maintenance-services>

The Rules and Regulations and Uniform Standards and Details issued by the County continue to be available on our web site:

<https://www.cuyahogacounty.gov/publicworks/services/design-and-construction/sanitary-design/sanitary-design-construction-drawings-and-standards>

My staff is available to meet with you at your convenience should you wish to discuss this report or any of the services that our department provides. I am pleased and grateful for the opportunity of serving you through the Cuyahoga County Department of Public Works.

Respectfully submitted,

Michael W. Dever, MPA, Director
Department of Public Works

cc: (with attachments)

Joe Kickel, Service Director

Gerald M. Wise, P.E., City Engineer



The Power of Consolidation



2501 Harvard Avenue – Newburgh Heights

Sanitary Engineering, Road & Bridge & Fleet Management are consolidated at one location



The **Harvard Avenue Maintenance Yard facility** is home to approximately 180 staff members and is **geographically centralized in Cuyahoga County** to **better serve the surrounding communities.**

- Vehicle fueling areas for **Diesel, Electric and Gasoline**
- Fleet Maintenance Area features: **9 static lifts and 3 mobile lifts**
- Interior Vehicle Wash Bay
- LED Lighting for Interior Office, Garage, Exterior Parking Lot and Site Lighting
- Materials Storage Yard
- **Dispatch Area**
- **Permits Area**
- **ADA-compliant** design for all Office, Conference, and Training Room areas
- Conference and Training Rooms for up to **200 visitors**





SANITARY FLEET FACTS

THE POWER OF REGIONALISM



Current vehicles & equipment	Quantity
House Trucks	13
Specialized Plate Truck & specialized vehicles for catch basin repair	7
Combination Jet-Vac & Straight Jet Trucks	10
TV Camera Trucks	7
Backhoes, Mini Excavators & Rubber Wheel Loader	7
Class 5 Dump Trucks	6
Construction trucks	8
1-ton trucks for pump station service	5
43,000 to 53,000 GVWR single-axle dump trucks	6
58,000 to 60,000 GVRW tandem axle dump trucks	12
Class 550 with crane for pump station service	3
20-25 ton trailers	11
Small Trailers	13





Table of Contents



Overview.....	1
Appendix Description.....	8
Community Streets Cleaned.....	A-1
Community Streets Televised.....	A-2
Plan Approval Status.....	A-3
Service Report Summary.....	A-4
Community Operating Expenses.....	A-5
Community Capital Expenses.....	A-6
Contact Information.....	Rear Folio





OVERVIEW

Established in 1919, the office of the Cuyahoga County Sanitary Engineer was created to provide administrative authority in matters of wastewater, storm water, and water supply management. In 2012, the Sanitary Engineering Division (formerly CCSE) became a part of the Cuyahoga County Department of Public Works (CCDPW), and now operates under County Executive Chris Ronayne.

The Sanitary Division's focus is on the maintenance and repair of aging sewer lines, sewer system needs assessment, engineering feasibility studies, and other infrastructure-related issues. These areas all have a direct impact on commercial and residential development, job creation, and expanding the tax base in the communities served by the Department of Public Works. Furthermore, the Sanitary Division is a major source of technical information for communities (mayors, municipal engineers, and service directors), which provides them with guidance for making infrastructure decisions within their community. The Sanitary Division has considerable experience in the maintenance, repair, and rehabilitation of sanitary and storm sewer systems, as well as significant expertise with respect to the operation and maintenance of pump stations and wastewater treatment plants.



The Sanitary Engineering Division of Public Works currently operates in 39 communities by agreement. Pursuant to such agreements, the Sanitary Division maintains more than 1,500 miles of sanitary sewers and 1,100 miles of storm sewers and operates 65 sewage-pumping stations. Working in cooperation with the Ohio Environmental Protection Agency (Ohio EPA), the Northeast Ohio Regional Sewer District (NEORS), the Cuyahoga County Board of Health (CCBH), and the various communities, the Sanitary Division works to maintain water quality. This is done through the construction of new sanitary sewers, maintenance of existing sewer systems, and the investigation and remediation of illicit discharges (sanitary sewage which is improperly discharged into storm sewers).

All funds used for operation, maintenance, rehabilitation, and repair of the sewerage system are generated through fees and assessments. (Funding is not via the County's General Fund to perform these activities.)

The Department of Public Works has been in the forefront of regionalism efforts within the County. With services provided to more than half of the County's 59 communities, the Sanitary Division continues to maintain reasonable rates and improve infrastructure throughout the area.



GOALS

The Sanitary Engineering Division of Public Works has three (3) major goals:

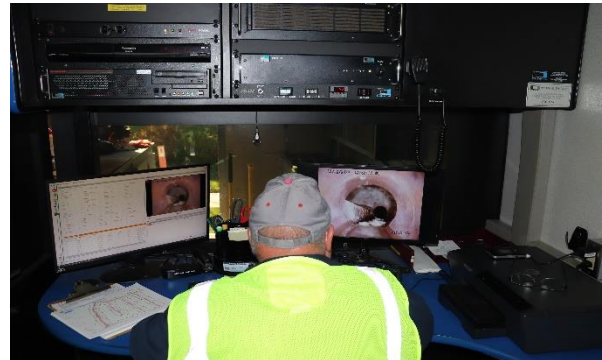


1. Operate and maintain the sanitary sewerage systems to assist the communities in meeting the goals and objectives of the EPA Capacity Management Operation and Maintenance (CMOM) guidelines.
2. Provide guidelines for design and construction through the County's "Uniform Standards for Sewerage Improvements" and "Rules and Regulations."
3. Issue sewer connection permits and provide construction inspection for new sanitary sewers and new connections to existing sanitary sewers.

The goals of the Sanitary Engineering Division with respect to the maintenance and repair of sewers are accomplished through the activities of our three main Sanitary Division groups working together: Maintenance Services; Engineering & Construction Services; and Administrative Services.

MAINTENANCE SERVICES

- Reduction of the number of flooded basements by maintaining existing capacity in the collection systems, minimize the inflow/infiltration of storm water to the sanitary system, and evaluate the structural integrity of the sewerage system;
- Optimization of maintenance efficiency to reduce operating costs and provide more available funds for capital improvement projects and repairs;
- Maintenance and inspection of the existing collection system to achieve EPA CMOM maintenance goals;
- Operation and maintenance of pumping stations;
- Performance of Illicit Discharge Detection and Elimination Services





ENGINEERING AND CONSTRUCTION SERVICES

- Preparation of Task Orders for repairs and rehabilitation;
- Plan review and approval of all new sewer improvements within the County service area;
- Performance of engineering analyses (required for operation of facilities and the collection system);
- Capital improvement planning;
- Construction management and inspection;
- Provision of guidelines for new construction through use of the *CCDPW Uniform Standards for Sewerage Improvements*;
- Provision of infrastructure needs assessment for communities;
- Project design;
- Construction inspection of new wastewater collection systems within the county service area; and,
- Record keeping of as-built plans and test tee locations.



ADMINISTRATIVE SERVICES

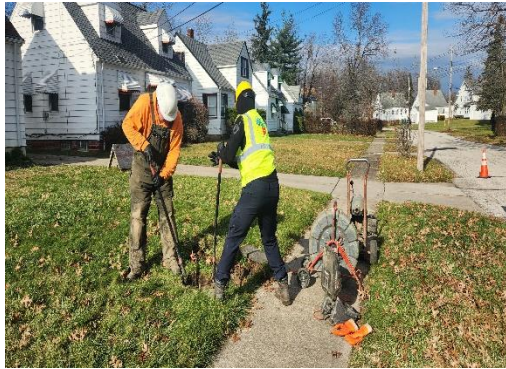
- Issuance of connection permits;
- Maintenance of Record Drawings;
- Provision of Geographical Information Systems (GIS) for development and implementation;
- Fiscal oversight of annual operating budget and capital improvement budget;
- Administration of Grants and loans; and,
- Licensing and permitting of more than 200 contractors.

SUMMARY OF COUNTY-WIDE MAINTENANCE SERVICES

SEWERS

- High-pressure jetting of sewers in the right-of-way, approximately **297 miles of sewers in 2023**
- Point repairs of sewers, force mains, and structures; **2,608 construction visits; and 1,715 catch basins cleaned;**
- **Cleaning of 8,647 service laterals**, including emergency maintenance and 24-hour on-call team for resident issues;
- **CCTV inspection** of approximately **226 miles** of sewers to provide condition ratings, failures and/or deficiencies;
- **I/I investigation and remediation, 232 visits;**
- Implementation of preventative maintenance and upgrades to pumping stations, as well as the provision of licensed operators to monitor the condition of those facilities.





The Maintenance Services Department provides a full-service program to clean sewers, provide National Association of Sewer Service Companies (NASSCO) Pipeline Assessment Certification Program (PACP) condition ratings of sewers, maintain the structural integrity of the sewer systems, and perform repairs on sanitary and storm sewers. The objective of the program is the cleaning of all sanitary sewers every three years and performing video inspection every six years. This timeline is well within the NEORS’s *“Best Management Practices”* guidelines.

■ **HOUSE LATERAL SERVICES**

The Maintenance Services House Lateral Service Department cleaned 8,647 house lateral connections in 2023. The goal is to alleviate sewer back-ups by clearing blocked mains and cleaning service connections to restore sewer capacity.

The House Lateral Service Department also performs flow monitoring for Inflow and Infiltration (I&I) analysis, dye testing, smoke testing, and lateral sewer inspection to identify I&I sources and locations of illicit discharges. The Department works with the communities, the Ohio EPA and the NEORS to protect local waterways.





■ PUMPING STATIONS

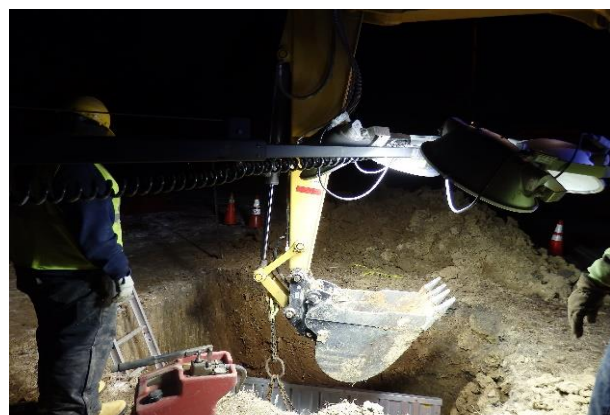
The County operates 65 pumping stations throughout the 39 communities pursuant to the maintenance agreements. A Supervisory Control and Data Acquisition (SCADA) system monitors the stations. The system provides alarms and operational status through a central computer, providing 24-hour monitoring. New pump stations are added to the SCADA system as they come on-line. Our maintenance staff consists of experienced operators and technicians enabling us to repair most problems in-house, therefore keeping costs down. Their preventive maintenance program and dedication to the job has reduced emergency callouts and overflows.



■ CAPACITY, MANAGEMENT, OPERATION, AND MAINTENANCE PROGRAM (CMOM)

The CMOM Program is a set of “best management practices” that have been developed by the industry and are applied over the life cycle of the sewer collection system. It is these general practices that are taken into consideration when a system is being reviewed by a federal or state agency. Improvement and recommendations are provided by the agencies based on deficiencies identified in the sanitary sewer system.

We continue to work with the NEORS (through their community discharge program) and with the Ohio EPA to ensure that our Sanitary Division’s best practices meet the CMOM goals.





SUMMARY OF ENGINEERING & CONSTRUCTION SERVICES

The Engineering and Construction Services Departments provide technical services to the communities including, but not limited to, capital project planning, grant and loan administration, design engineering, construction management, as well as inspection of sanitary and storm sewers, and pump stations.

The sewer repair and rehabilitation program is managed by in-house personnel. A Sanitary Division engineer is assigned to each community to provide an individual contact for sewer related issues. Under the existing sewer maintenance agreements (based on video inspection information and requests from the communities), the County issues Task Orders for repair and rehabilitation by our personnel, supplemented by several third-party contractors.

In 2023, on behalf of member communities, design plans were reviewed for 50 construction projects. The Sanitary Engineering Division also coordinates and analyzes the results of field testing and flow monitoring to detect and eliminate storm water inflow/infiltration (I/I) from the sanitary sewer system and illicit discharges to the storm sewer system. Record drawings are prepared, scanned, and filed for record keeping. Information on new sewers and service connections is provided to our IT personnel for incorporation into the County's Geographical Information System (GIS).

The Sanitary Engineering Division and the Construction Department also oversee capital construction projects, including the development of financial packages in the form of grants and loans obtained from the State of Ohio. These funds are utilized for lining, repairing, replacing, and rehabilitating existing sanitary and storm sewerage systems.

The Construction staff provides inspection of all new sanitary sewers and for the connection of service laterals to existing sewers. The Inspectors ensure that projects are constructed in conformance to design plans, specifications, and the County's "Uniform Standards."





SUMMARY OF ADMINISTRATIVE SERVICES

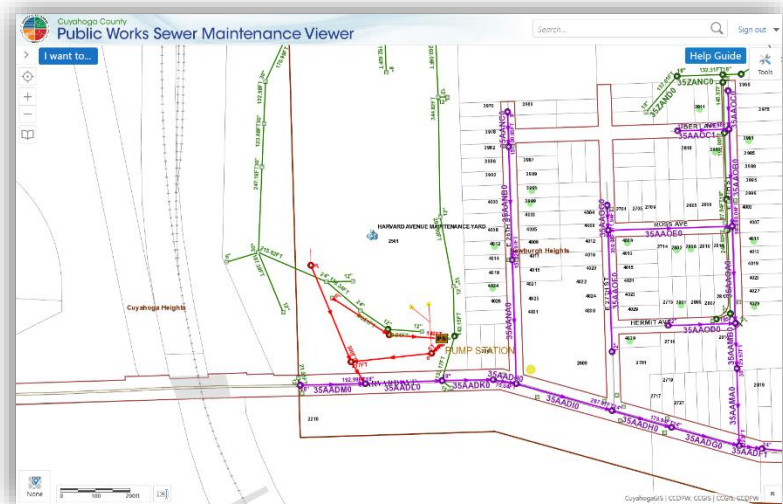
■ PERMITS

The County issues residential and commercial sewer service connection permits for 26 of the 39 communities with maintenance agreements. Only contractors registered with the Department of Public Works can obtain a permit. The permit process includes inspection by the County to ensure that the work is performed in conformance to the “Uniform Standards and Details”. Permanent records of all sewer connections are maintained by the County.

■ INFORMATION TECHNOLOGY

Information Technology (IT) provides computer and analytical support to internal end-users and to the communities serviced by the CCDPW. IT is responsible for the design, implementation, and maintenance of our Geographical Information System (GIS), other relational database systems, and guiding data acquisition tasks throughout the CCDPW. The GIS mapping program catalogues the location of sewer systems and performs analysis on spatial data. This information supports the planning, design, and maintenance of sewer systems, and ensures user fees are appropriately assessed and collected. Furthermore, the mapping program features access to information regarding permits that are on record.

Our Geographical Information System is continually being updated and expanded to include information on repair and rehabilitation activities as well as system maintenance and inspection activities. Information is shared between the County, member communities, and the NEORSRD to improve services and foster collaboration.



■ FINANCE

The Finance Department provides support services to various units within the CCDPW. Automated cost accounting programs and systems ensure accurate tracking and monitoring of expenditures, revenues, rate structures, and other data that provide financing for capital projects and operational budgets. All systems and programs are operated under generally accepted accounting principles. The CCDPW oversees an annual storm and sanitary sewer operating budget of more than \$33 million. Finance is responsible for accounts receivable, accounts payable, cost accounting, audit, inventory control, capital project financing, purchasing, and sewer assessment revenue management for member communities.

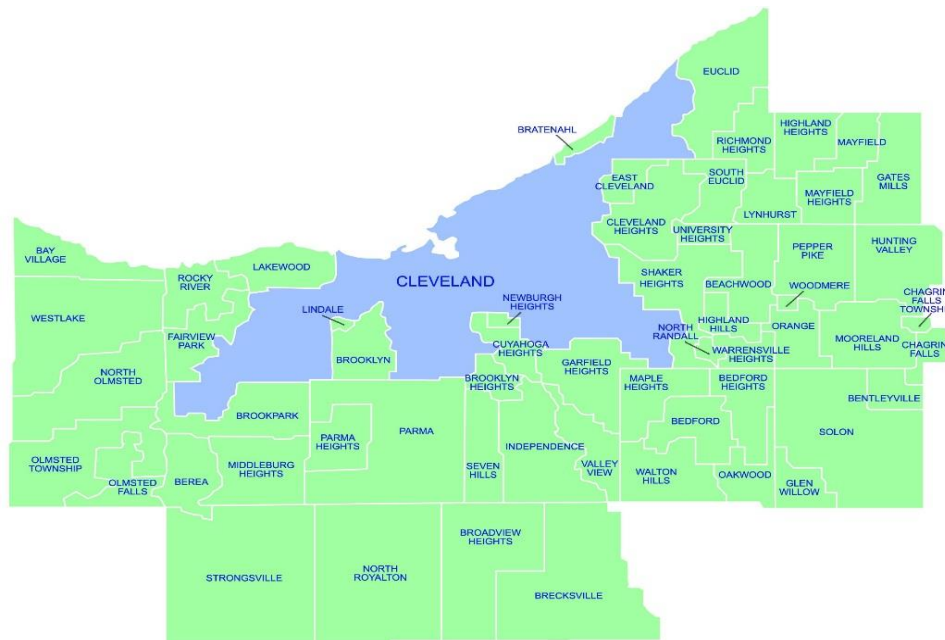


Appendix Description*

The following appendices contain a variety of reports representing the services provided to member communities in 2023. The CCDPW follows a manhole-to-manhole, sewer segment-based accounting method for jet cleaning and TV (video) inspection maintenance services. The first two appendices contain listings of the collection system cleaned and inspected for the year by street. The next appendix lists the plan approvals for the more significant projects submitted to, reviewed, and approved by the Engineering Department during the year for your community. Smaller review services such as house connections or ongoing, intermittent reviews of large multi-phase projects spanning several years of development are not shown in this report. The final appendices provide a breakdown of services including house visits, inflow/infiltration studies, construction activity, operating expenses, and capital project costs contracted for the community.

This annual report, along with a map showing areas where collection system mainlines were jet cleaned and TV inspected, locations where construction crew activities were provided, house visits where house lateral connections needed to be cleaned or inspected, is available on our website at <https://cuyahogacounty.gov/publicworks/services/sewer-maintenance-services/city-service-maps-annual-reports>. Adobe Corporation's free reader software is required and can be downloaded from www.adobe.com.

*** Please note:** These appendix reports are provided only to communities for which specific services are provided by the CCDPW. For example, if a regularly scheduled mainline cleaning service is not provided for your community, a map was not produced. Similarly, if project review or capital project management services are not provided for your community, then there is also no corresponding report. Furthermore, certain specific member communities are provided limited maintenance only on County improvement mainlines and/or facilities.





Community Streets Cleaned*



Section A-1

*No service provided if section is blank

2023 Collection System Jet Cleaning BRECKSVILLE

SANITARY

Street Count: 106

STREET	Jet footage	# of segments
AMBER LANE	2,352	11
ASHLAWN DRIVE	2,711	15
ASHLAWN EASEMENT	1,151	5
BARKLEIGH CIRCLE	145	1
BRADFORD LANE	1,242	8
BRECKSVILLE EASEMENT	1,824	11
BRECKSVILLE ROAD	10,248	44
BROOKVIEW ROAD	1,291	7
CAMBRIDGE COURT	306	1
CAMBRIDGE DRIVE	1,547	7
CARDINAL LANE	1,221	5
CARRIAGE HILL DRIVE	2,042	11
CARRIAGE HILL EASEMENT	407	3
CHAUTAUQUA EASEMENT	173	1
CHAUTAUQUA TRAIL	536	3
CHEROKEE LANE	1,710	10
CINNABAR DRIVE	1,632	9
COACHMAN COURT	504	2
COMPASS POINT DRIVE	1,630	6
CRABTREE EASEMENT	636	3
CRABTREE LANE	1,548	12
CRINKLEROOT CLEARING	1,683	6
CRYSTAL CREEK DRIVE	1,288	6
CRYSTAL CREEK EASE	569	3
DAISY AVENUE	788	4
DAVENTREE DRIVE	664	3
DAVENTREE EASEMENT	667	3
DUNBAR EASEMENT	950	4
DUNBAR LANE	1,267	9
ENGLISH DRIVE	804	5
FARVIEW OVAL	330	2
FARVIEW ROAD	2,862	11
FITZWATER ROAD	1,296	8
FOREST EASEMENT	674	4

SANITARY- continued

STREET	Jet footage	# of segments
FOREST LANE	1,688	9
FORESTDALE DRIVE	387	2
FORESTDALE EASEMENT	236	1
FROST LANE	1,567	7
GLEN EAGLE DRIVE	623	2
GREENBRIER DRIVE	1,247	6
GRENADIER LANE	499	2
HAROLD EASEMENT	282	2
HAWTHORNE DRIVE	1,112	4
HILLBROOK OVAL	1,842	6
HILTON ROAD	1,572	5
HINCKLEY CIRCLE	456	2
HOLLIS COURT	830	4
HOLLIS LANE	2,135	13
IROQUOIS TRAIL	1,423	5
LAUREL LANE	1,405	6
MAIDSTONE DRIVE	349	2
MEADOW EASEMENT	860	7
MEADOW LANE	1,194	8
MERCER EASEMENT	502	2
MERCER LANE	486	3
MILL ROAD	130	1
MONTICELLO DRIVE	365	3
OAK PARK DRIVE	389	1
OAKHURST CIRCLE	4,003	23
OLD QUARRY EASEMENT	100	1
OLD QUARRY LANE	2,442	12
ORIANNA STREET	414	2
OTTAWA DRIVE	605	2
PARK PLACE DRIVE	589	4
PARK PLACE EASEMENT	296	1
PARKVIEW DRIVE	185	1
PARTRIDGE TRAIL	2,597	12
PERSHING DRIVE	1,144	4
PIONEERS POINT	780	5
PLANTATION DRIVE	1,347	7
PRINCESS COURT	389	1
PROVINCE EASEMENT	296	1

SANITARY- continued

STREET	Jet footage	# of segments
PROVINCE LANE	1,681	10
PUBLIC SQUARE EASEMENT	365	3
RED OAKS DRIVE	484	2
RIVERCREST DRIVE	2,260	17
RIVERVIEW EASEMENT	381	2
ROBIN LANE	1,179	6
ROCKLEDGE DRIVE	1,630	8
ROCKLEDGE EASEMENT	219	1
SENECA DRIVE	148	1
SENECA EASEMENT	1,329	8
SETH PAYNE STREET	549	2
SETTLERS PASSAGE	3,717	19
SOMERSET DRIVE	1,093	5
STOVER LANE	688	3
SUNRISE EASEMENT	368	2
SUNRISE TRAIL	213	2
SUNSTONE DRIVE	415	2
SWEETWATER DRIVE	380	2
SWEETWATER EASEMENT	25	1
TANAGER TRAIL	8,713	46
TEALLITE DRIVE	607	2
TEALLITE EASEMENT	571	3
THORNTREE DRIVE	990	6
TIMBER EASEMENT	1,359	8
TIMBER TRAIL	4,390	23
WARBLERS ROOST	973	6
WESTVIEW DRIVE	560	2
WHITEWOOD ROAD	6,874	31
WIESE EASEMENT	1,335	6
WINDING WAY EASEMENT	480	2
WINDING WAY	4,781	21
WOODMILL CIRCLE	358	2
WOODSTONE DRIVE	895	6
WOODSTONE EASEMENT	335	2

JET SANITARY TOTAL: 135,809 684

STORM

Street Count: 17

STREET

Jet Footage # of segments

STREET	Jet Footage	# of segments
AMBER LANE	240	1
BRECKSVILLE EASEMENT	120	1
CALVIN DRIVE	355	1
CHIPPEWA DRIVE	550	2
CRABTREE EASEMENT	390	2
CRABTREE LANE	430	5
CRYSTAL CREEK DRIVE	1,288	6
CRYSTAL CREEK EASEMENT	415	2
DAISY AVENUE	888	5
FOREST LANE	958	5
PIONEERS POINT	837	5
RIVERVIEW ROAD	55	2
SETTLERS PASSAGE	165	2
TIMBER EASEMENT	205	1
WARBLERS ROOST EASEMENT	40	1
WARBLERS ROOST	244	1
WESTWOOD DRIVE	163	1

JET STORM TOTAL: 7,343 43

2023 JET SANITARY & STORM GRAND TOTAL: 143,152 727

Community Streets Inspected*



Section A-2

*No service provided if section is blank

2023 Collection System TV Inspection

BRECKSVILLE

SANITARY

Street Count: 101

STREET	CCTV Footage	# of segments
AMBER LANE	2,396	12
ASHLAWN DRIVE	2,654	12
ASHLAWN EASEMENT	1,171	5
BARKLEIGH CIRCLE	289	2
BEECHWOOD DRIVE	200	2
BOULDER CREEK CIRCLE	370	2
BRADFORD LANE	810	5
BRECKSVILLE EASEMENT	725	4
BRECKSVILLE ROAD	2,348	9
BROOKVIEW ROAD	1,326	7
CAMBRIDGE COURT	308	1
CAMBRIDGE DRIVE	1,721	8
CARDINAL LANE	1,757	6
CARRIAGE HILL DRIVE	1,607	8
CARRIAGE HILL EASEMENT	500	2
CHAUTAUQUA EASEMENT	174	1
CHAUTAUQUA TRAIL	537	3
CHEROKEE LANE	1,466	6
CHIPPEWA ROAD	510	4
CINNABAR DRIVE	1,769	10
COACHMAN COURT	508	2
COMPASS POINT DRIVE	1,750	8
CRABTREE EASEMENT	389	2
CRABTREE LANE	1,559	12
CRANBROOK DRIVE	307	2
CRESTVIEW DRIVE	1,113	7
CRINKLEROOT CLEARING	1,663	4
CRYSTAL CREEK DRIVE	1,987	11
CRYSTAL CREEK EASEMENT	816	5
DAISY AVENUE	790	4
DAVENTREE DRIVE	672	3
DAVENTREE EASEMENT	676	3
DAVIDSON DRIVE	0	1
DUNBAR EASEMENT	589	3
DUNBAR LANE	986	6
ENGLISH DRIVE	812	5

SANITARY- continued

STREET	CCTV Footage	# of segments
FARVIEW OVAL	325	2
FARVIEW ROAD	2,717	9
FITZWATER ROAD	1,191	7
FOREST EASEMENT	543	3
FOREST LANE	1,789	10
FORESTDALE DRIVE	399	2
FORESTDALE EASEMENT	240	1
FROST LANE	551	2
GLEN EAGLE DRIVE	623	2
GREENBRIER DRIVE	1,258	6
GREENHAVEN PARKWAY	1,345	5
GRENADIER LANE	504	2
HAWTHORNE DRIVE	1,127	4
HILTON ROAD	1,600	5
HINCKLEY CIRCLE	458	2
HOLLIS COURT	170	1
HOLLIS LANE	1,993	12
IROQUOIS TRAIL	870	3
MEADOW EASEMENT	275	2
MEADOW LANE	182	1
MERCER EASEMENT	511	2
MERCER LANE	1,501	10
MONTICELLO DRIVE	825	4
MONTICELLO EASEMENT	207	1
OAK PARK DRIVE	392	1
OAKHURST CIRCLE	4,262	21
OLD QUARRY LANE	2,364	11
ORIANNA STREET	414	2
OTTAWA DRIVE	612	2
PARK PLACE DRIVE	585	4
PARK PLACE EASEMENT	304	1
PARKVIEW DRIVE	185	1
PARTRIDGE TRAIL	2,767	12
PERSHING DRIVE	1,160	4
PIONEERS POINT	862	7
PLANTATION DRIVE	1,338	7
PROVINCE LANE	1,118	6
RED OAKS DRIVE	488	2

SANITARY- continued

STREET	CCTV Footage	# of segments
RIVERCREST DRIVE	2,297	17
RIVERVIEW ROAD	835	4
ROBIN LANE	1,194	6
ROCKLEDGE DRIVE	1,652	8
ROCKLEDGE EASEMENT	224	1
SETH PAYNE STREET	567	2
SETTLERS PASSAGE	4,453	22
SOMERSET DRIVE	1,106	5
SPRAGUE ROAD	1,027	3
STOVER LANE	726	3
SUNSTONE DRIVE	422	2
TANAGER TRAIL	5,689	29
TEALLITE DRIVE	606	2
TEALLITE EASEMENT	576	3
THORNTREE DRIVE	852	5
TIMBER EASEMENT	904	5
TIMBER TRAIL	4,348	24
WARBLERS ROOST EASEMENT	40	1
WARBLERS ROOST	752	5
WESTVIEW DRIVE	571	2
WHITWOOD ROAD	7,342	34
WIESE EASEMENT	456	2
WINDING WAY	4,037	18
WOODCREST DRIVE	142	1
WOODMILL CIRCLE	360	2
WOODSTONE DRIVE	911	6
WOODSTONE EASEMENT	323	2
CCTV SANITARY TOTAL:	117,722	579

STORM

Street Count: 34

STREET	CCTV Footage	# of segments
BARKLEIGH CIRCLE	140	1
BEECHWOOD DRIVE	200	2
BOULDER CREEK CIRCLE	370	2
BRECKSVILLE EASEMENT	120	1
CHEROKEE LANE	635	2
CHIPPEWA CREEK DRIVE	10	1
CHIPPEWA ROAD	396	3
CINNABAR DRIVE	117	1
CRABTREE EASEMENT	250	1
CRABTREE LANE	430	5
CRANE CREEK PARKWAY	260	2
CRESTVIEW DRIVE	185	1
CRYSTAL CREEK DRIVE	1,987	11
CRYSTAL CREEK EASEMENT	1,151	6
DAISY AVENUE	790	4
FARVIEW ROAD	1,175	11
FITZWATER ROAD	205	2
FOREST LANE	1,051	6
HICKORY RIDGE DRIVE	320	1
HIDDEN LAKE EASEMENT	100	1
HIDDEN LAKE TRAIL	35	1
HIGHLAND DRIVE	76	1
HOLLIS EASEMENT	404	3
MALLARD DRIVE	670	4
MEADOW LANE	315	1
OAKES ROAD	616	4
OXFORD TRAIL	225	4
PIONEERS POINT	615	6
RIVERVIEW ROAD	88	2
SETTLERS PASSAGE	497	3
SOMERSET DRIVE	626	2
SOUTHPOINTE PARKWAY	36	1
TIMBER EASEMENT	205	1
WARBLERS ROOST EASEMENT	40	1

CCTV STORM TOTAL: 14,340 98

2023 CCTV SANITARY & STORM GRAND TOTAL: 132,062 677

Plan Approvals*



Section A-3

*No service provided if section is blank

2023 Brecksville Plan Approvals

Project ID	Project Name	Approval Date
23-016(1)	RIVERVIEW RD CULVERT 1 AND 2 REPLACEMENT	14-Mar-2023
20-040(8)	VALOR ACRES MILLER ROAD ENTRANCE	20-Mar-2023
20-040(3)	VALOR ACRES SHERWIN-WILLIAMS R&D FACILITY	25-Apr-2023
20-040(9)	VALOR ACRES LAVENDER LN 14X5 CULVERT	25-Apr-2023
20-040(10)	VALOR ACRES MIXED USE SOUTH (CLEARING & GRADING)	5-Jun-2023
23-039(1)	HIGHLAND DRIVE STORM IMP.	20-Sep-2023
23-042(1)	APPLIED MEDICAL TECHNOLOGIES	26-Oct-2023

Service Program Summary*



Section A-4

*No service provided if section is blank

City of Brecksville

<u>Type</u>	<u>Community Total</u>
Sanitary Sewers Manholes	438,571 Feet 2,051 (Approximately)

2023 Service Program

<u>Program</u>	<u>2023 Activity</u>
1) High Pressure Jet Cleaning Sanitary – 135,809 Feet Storm – 7,343 Feet	143,152 Feet
2) House Service	358 Calls
3) Television Inspection Sanitary – 117,722 Feet Storm – 14,340 Feet	132,062 Feet
4) Construction Activities	87 Job(s)
5) Dye Testing	0 Test(s)
6) Construction Permits Issued (Commercial) (Residential)	8 32
7) Plan Approvals	7 Plan(s)
8) Construction Inspection PUBLIC: Mainline & Lateral PRIVATE: Commercial & Residential	23,448 Feet 11,627 Feet
9) Catch Basins Cleaned	8

Community Operating Expenses*



Section A-5

*No service provided if section is blank

City of Brecksville
2023 Operating Expenses

<u>Activity</u>	<u>Cost</u>
1. Maintenance of Sanitary Sewerage Systems	\$1,286,047
2. Pump Station Operation and Maintenance	\$202,591
3. Engineering and/or Inspection	\$313,900
4. Capital Expenses (See Section A-6 if any)	\$5,296,747
 Total Operating Expenses:	 \$7,099,285

Community Capital Expenses*



Section A-6

*No service provided if section is blank

City of Brecksville

2023 Capital Expenses

Bradford Pump Station Loan	\$ 50,804
Chippewa Road/Calvin Drive Reimbursement	\$2,178,745
Dewey Road Pump Station Loan	\$ 150,188
Echo Hills Loan	\$ 113,645
Glen Forest Trail Reimbursement	\$ 4,858
Glenwood Trail Reimbursement	\$2,116,036
Highland Drive Reimbursement	\$ 15,938
Oakes Road Repair	\$ 48,867
Riverview Road Culvert 1,2 Reimbursement	\$ 569,817
Settlers Passage Lining	\$ 3,613
Station Road Reimbursement	\$ 1,914
Tanager Area Lining	\$ 41,040
Westwood Drive Storm Reimbursement	\$ 1,282
Total Capital Expenses:	\$5,296,747



CONTACT INFORMATION

Department of Public Works Administrative Headquarters
2079 East Ninth Street - 5th Floor
Cleveland, OH 44115

Email: Publicworks@cuyahogacounty.us

Website: Publicworks.cuyahogacounty.us

Michael W. Dever, M.P.A.	Director of Public Works
David Ray, P.E, P.S.	Cuyahoga County Engineer
Bryan J. Hitch	Deputy Chief - Maintenance
Thomas P. Sotak, P.E.	Deputy Chief - Engineering
Mellany M. Seay	Finance & Operations Administrator
Nichole L. English, P.E.	Planning & Programming Administrator
Laura A. Weber, P.E.	Chief Section Engineer Sanitary
Edward V. Premen, M.B.A.	Business Services Manager Sanitary

Department of Public Works
Sanitary Maintenance Division
2501 Harvard Avenue
Newburgh Heights, Ohio 44105

Dispatch Office	(216) 443-8201
Dispatch Email	PWDispatch@cuyahogacounty.us
Administration	(216) 348-3867
Inspection & Permits	(216) 443-8209
Sewer Maintenance	Gary Green, Senior Supervisor (216) 443-8225
Sewer Maintenance	John Gribble, Senior Supervisor (216) 443-8227
Lateral Services	Brandon Skufca, Supervisor (216) 443-8226
Construction (EAST)	Dave Novak, Supervisor (216) 348-4238
Construction (WEST)	Mitchell Holt, Supervisor (216) 443-8229
Sewer Jetting	Tom Noy, Supervisor (216) 348-3901
Televised Inspection	Todd Swindell, Supervisor (216) 443-8224
Environmental Services	Richard Krumreig, Manager (216) 443-7798
Pump Station Operations	Robert Dietrich, Supervisor (216) 698-3566
Sewer Maintenance (2 nd)	Steve Cooper, Supervisor (216) 698-3535
Sewer Maintenance (2 nd)	Pat Mauk, Supervisor (216) 348-3849



Cuyahoga County **Department of Public Works**

Administrative Headquarters
2079 East Ninth Street
Cleveland, OH 44115
216.348.3800